

U

| | |
|------------------------|--|
| NO. OF COPIES RECEIVED | |
| DISTRIBUTION | |
| SANTA FE | |
| FILE | |
| U.S.G.S. | |
| LAND OFFICE | |
| OPERATOR | |

NEW MEXICO OIL CONSERVATION COMMISSION

Form C-101
Revised 1-1-65

| | |
|--------------------------------|---|
| 5A. Indicate Type of Lease | |
| STATE <input type="checkbox"/> | FEE <input checked="" type="checkbox"/> |
| 5. State Oil & Gas Lease No. | |

APPLICATION FOR PERMIT TO DRILL, DEEPEN, OR PLUG BACK

| | | | |
|--|--|--|--|
| 1a. Type of Work | | 7. Unit Agreement Name | |
| b. Type of Well OIL WELL <input type="checkbox"/> GAS WELL <input checked="" type="checkbox"/> OTHER <input type="checkbox"/> | | 8. Form or Lease Name Estacado Unit | |
| 2. Name of Operator Union Oil Company of California | | 9. Well No. 1 | |
| 3. Address of Operator P. O. Box 671 - Midland, Texas 79701 | | 10. Field and Pool, or Wildcat Wildcat | |
| 4. Location of Well UNIT LETTER L LOCATED 1980 FEET FROM THE South LINE AND 660 FEET FROM THE West LINE OF SEC. 8 TWP. 14-S RGE. 35-E NMPM | | 12. County Lea | |
| 15. Proposed Depth 13,600' | | 19A. Formation Morrow | |
| 21. Elevations (Show whether DF, RT, etc.) 4059.6' GR | | 20. Rotary or C.R. Rotary | |
| 21A. Kind & Status Plug. Bond Blanket | | 22. Approx. Date Work will start Upon Approval | |

23.

PROPOSED CASING AND CEMENT PROGRAM

| SIZE OF HOLE | SIZE OF CASING | WEIGHT PER FOOT | SETTING DEPTH | SACKS OF CEMENT | EST. TOP |
|--------------|----------------|-----------------|---------------|------------------|----------|
| 15" | 11-3/4" | 42# | 500' | 450 sx Circul | Surface |
| 11" | 8-5/8" | 32# | 4,560' | 600 sx | 2000' |
| 7-7/8" | 5-1/2" | 20# & 17# | 13,600' | To be determined | |

3000 psi WP Manual B.O.P. 500' to 4,560'
5000 psi WP Manual/Hydraulic B.O.P. 4,560' to T.D.
5000 psi WP Hydril & 5000 psi WP Rotating Head 4,560' to T.D.

APPROVAL VALID
FOR 90 DAYS UNLESS
DRILLING COMMENCED,
EXPIRES 11-26-74

IN ABOVE SPACE DESCRIBE PROPOSED PROGRAM: IF PROPOSAL IS TO DEEPEN OR PLUG BACK, GIVE DATA ON PRESENT PRODUCTIVE ZONE AND PROPOSED NEW PRODUCTIVE ZONE. GIVE BLOWOUT PREVENTER PROGRAM, IF ANY.

I hereby certify that the information above is true and complete to the best of my knowledge and belief.

Signed J.R. Hughes Title District Drilling Supt. Date August 20, 1974

APPROVED BY [Signature] TITLE SUPERVISOR DATE
CONDITIONS OF APPROVAL, IF ANY:

**NEW MEXICO OIL CONSERVATION COMMISSION
WELL LOCATION AND ACREAGE DEDICATION PLAT**

Form
Supplied by
the Commission

All distances must be from the outer boundaries of the Section

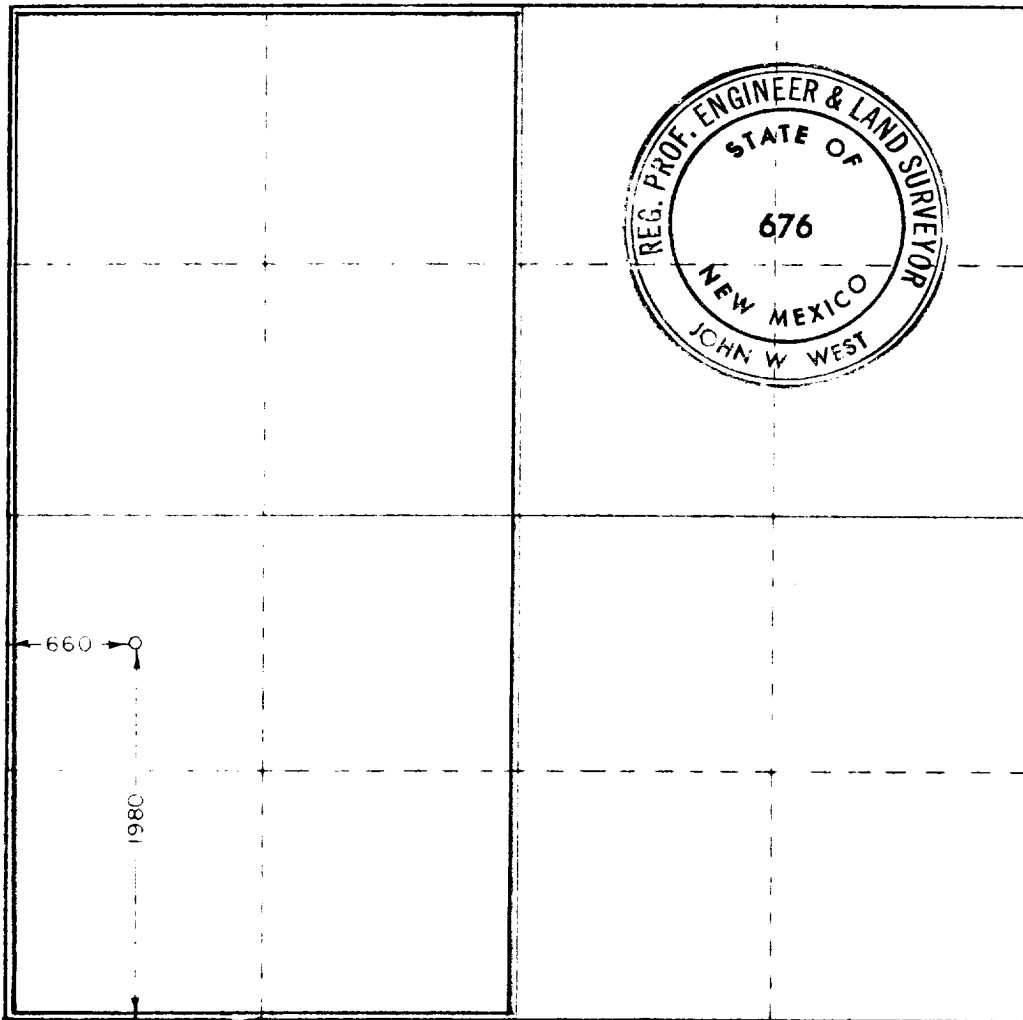
| | | | | | |
|---|---------------------|--------------------------------------|-------------------------|------------------------------|--|
| UNION OIL OF CALIFORNIA | | | ESTACADO UNIT | | |
| L | Section 8 | Township 14 SOUTH | Range 35 EAST | County LEA COUNTY | |
| Acreage Location of Well: 1980 feet from the SOUTH line and 660 feet from the WEST | | | | | |
| Surface Elev. 4046.0 | | Producing Formation Morrow | | Well Name Wildcat | |
| | | | | Section Number 320 | |

1. Outline the acreage dedicated to the subject well by colored pencil or hachure marks on the plat below.
2. If more than one lease is dedicated to the well, outline each and identify the ownership thereof (fractional interest and royalty).
3. If more than one lease of different ownership is dedicated to the well, have the interests of all owners been consolidated by communitization, unitization, force-pooling, etc?

☒ Yes ☐ No If answer is "yes," type of consolidation **Unitization**

If answer is "no," list the owners and tract descriptions which have actually been consolidated (if so, attach this form if necessary) _____

No allowable will be assigned to the well until all interests have been consolidated (by communitization, unitization, forced-pooling, or otherwise) or until a non-standard unit, eliminating such interests, has been approved by the Commission.



CERTIFICATION

I hereby certify that the information contained herein is true and correct to the best of my knowledge and belief.

J. R. Hughes

J. R. Hughes

District Drilling Supt.

Union Oil Co. of California

August 22, 1974

I hereby certify that the well shown on this plat was plotted from notes of actual surveys made by me under my supervision and that the same is true and correct to the best of my knowledge and belief.

Date of Survey

AUGUST 10, 1974

Registered Professional Engineer and Land Surveyor

John W. West

Certificate No.

676

330 660 990 1320 1650 1980 2310 2640 2970 3300 3630 3960 4290 4620 4950 5280 5610 5940 6270 6600