

NEW MEXICO OIL CONSERVATION COMMISSION
WELL LOCATION AND ACREAGE DEDICATION PLAT

Form C-102
Supersedes C-128
Effective 1-1-65

All distances must be from the outer boundaries of the Section.

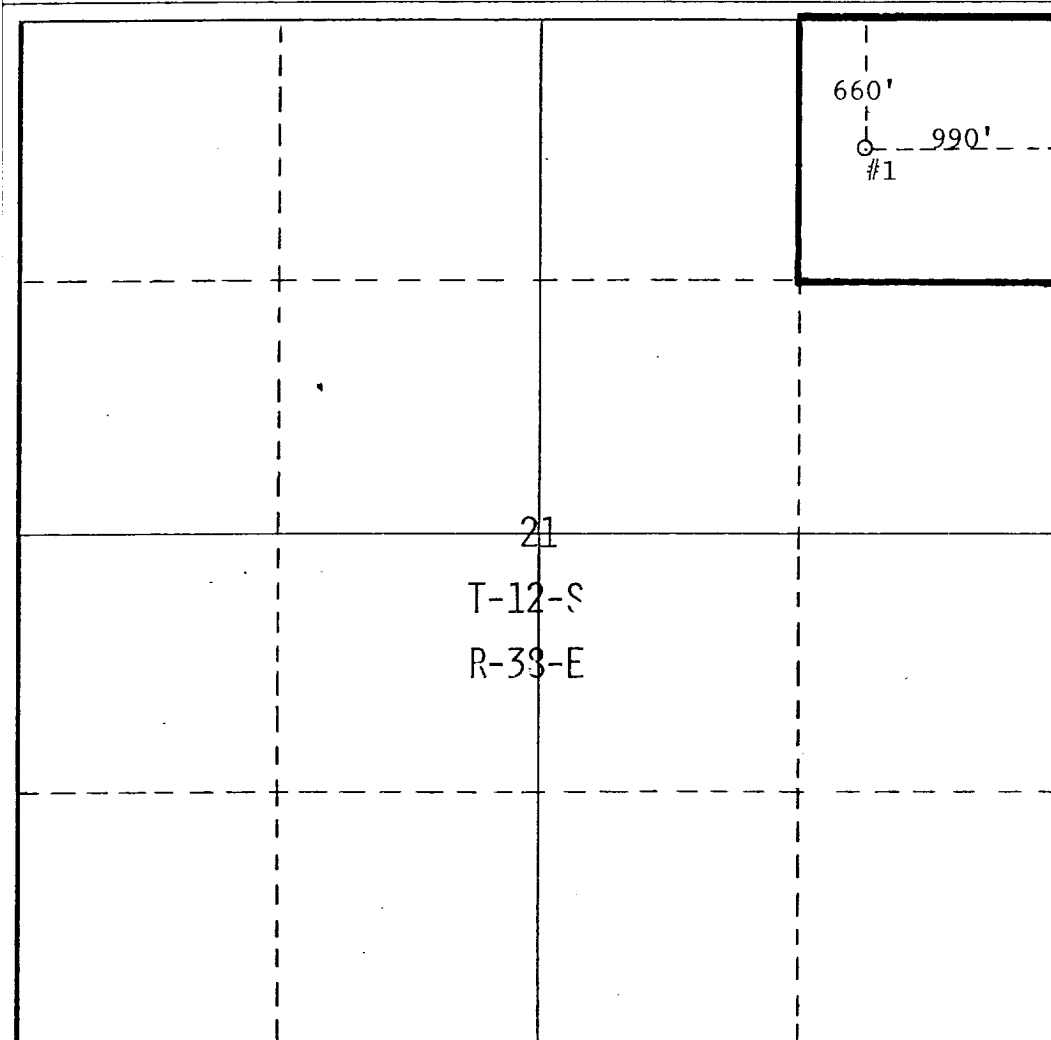
Operator D. H. Hunt, et al			Lease Field State		Well No. 1
Unit Letter A	Section 21	Township 12 S	Range 38 E	County Lea	
Actual Footage Location of Well: 660 feet from the North line and 990 feet from the East line					
Ground Level Elev. 3828'	Producing Formation Devonian		Pool Wildcat		Dedicated Acreage: 40 Acres

1. Outline the acreage dedicated to the subject well by colored pencil or hachure marks on the plat below.
2. If more than one lease is dedicated to the well, outline each and identify the ownership thereof (both as to working interest and royalty).
3. If more than one lease of different ownership is dedicated to the well, have the interests of all owners been consolidated by communitization, unitization, force-pooling, etc?

☐ Yes ☐ No If answer is "yes," type of consolidation _____

If answer is "no," list the owners and tract descriptions which have actually been consolidated. (Use reverse side of this form if necessary.) _____

No allowable will be assigned to the well until all interests have been consolidated (by communitization, unitization, forced-pooling, or otherwise) or until a non-standard unit, eliminating such interests, has been approved by the Commission.



CERTIFICATION

I hereby certify that the information contained herein is true and complete to the best of my knowledge and belief.

Charles J. Love

Name

Charles J. Love

Position

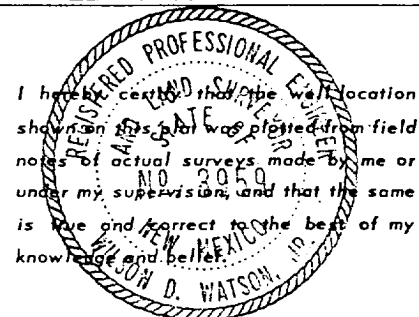
District Superintendent

Company

D.H. Hunt

Date

11-26-80



Date Surveyed

November 20, 1980

Registered Professional Engineer and/or Land Surveyor

Charles J. Love

Certificate No.

3959



RECEIVED
DEC 1 1980
On

173