

NO. OF COPIES RECEIVED	
DISTRIBUTION	
SANTA FE	
FILE	
U.S.G.S.	
LAND OFFICE	
OPERATOR	

3A. Indicate Type of Lease
STATE <input checked="" type="checkbox"/> FEE <input type="checkbox"/>

3. State Oil &amp; Gas Lease No.

B-9560

## APPLICATION FOR PERMIT TO DRILL, DEEPEN, OR PLUG BACK

Type of Work	DRILL <input checked="" type="checkbox"/> DEEPEN <input type="checkbox"/> PLUG BACK <input type="checkbox"/>
Type of Well	OIL WELL <input checked="" type="checkbox"/> GAS WELL <input type="checkbox"/> OTHER <input type="checkbox"/>
Name of Operator	Texaco Inc.
Address of Operator	P. O. Box 728, Hobbs, New Mexico 88240
Location of Well	UNIT LETTER C LOCATED 660 FEET FROM THE North LINE 2310 FEET FROM THE West LINE OF SEC. 14 TWP. 14-S. SEC. 33-E NMPM

7. Unit Agreement Name

8. Farm or Lease Name

New Mexico "BG" St. NUT-1

9. Well No.

9

10. Field and Pool, or Wildcat  
Saunders Permo  
Upper Penn

12. County

Lea

Elevations (show whether DT, KT, etc.)	21A. Kind & Status Plug. Bond	19. Proposed Depth	19A. Formation	20. Rotary or C.T.
4196 GR	Blanket	10,100'	Bough "A"	Rotary
		21B. Drilling Contractor		22. Approx. Date Work will start
				January 10, 1987

## PROPOSED CASING AND CEMENT PROGRAM

SIZE OF HOLE	SIZE OF CASING	WEIGHT PER FOOT	SETTING DEPTH	SACKS OF CEMENT	EST. TOP
24"	20"	94#	40'	Redimix	Surface
15"	11-3/4"	42#	1740'	1500	Circulate
11"	8-5/8"	24# & 28#	4200'	1750	Circulate
7-7/8"	5-1/2"	17#	10,100'	1700	Circulate

## CEMENTING PROGRAM

Surface Casing: 1500 sacks Class "H" w/2% CaCl (15.6 ppg, 1.18 cu. ft./sx.).

Intermediate Casing: 1500 sacks Light Weight w/15# salt, 1/4# Flocele (12.7 ppg, 2.10 cu. ft./sx.) followed by 250 sacks Class "H" w/1/4# Flocele (15.6 ppg, 1.18 cu. ft./sx.).

Production Casing: 1ST STAGE: 500 sacks Light Weight, 1/4# Flocele (12.3 ppg, 2.00 cu. ft./sx.) followed by 200 sacks 50-50 pozmix Class "H", 1/4# Flocele and .8% Halad-9 (13.6 ppg, 1.40 cu. ft./sx.).2ND STAGE: 1000 sacks-Light Weight, 1/4# Flocele (12.3 ppg, 2.00 cu. ft./sx.) DV Tool @ 7000'.

There are no other wells in this 1/4, 1/4 Section.

BOVE SPACE DESCRIBE PROPOSED PROGRAM IF PROPOSAL IS TO DEEPEN OR PLUG BACK, GIVE DATA ON PRESENT PRODUCTIVE ZONE AND PROPOSED NEW PRODUC-  
ZONE. GIVE BLOWOUT PREVENTER PROGRAM, IF ANY.

I hereby certify that the information above is true and complete to the best of my knowledge and belief.

L. J. Seeman This Dist. Petr. Engr. Date 12/04/86

(This space for State Use)

ORIGINAL SIGNED BY JERRY SEDON

SIGNED BY DISTRICT 1 SUPERVISOR TITLE DATE

CONDITIONS OF APPROVAL, IF ANY:

DEC 5 1986

Permit Expires 6 Months From Approval  
Date Unless Drilling Underway.

RECEIVED  
DEC 4 1995  
OCD  
HOBBS OFFICE

NEW MEXICO OIL CONSERVATION COMMISSION  
WELL LOCATION AND ACREAGE DEDICATION PLAT

Form C-102  
Supersedes C-128  
Effective 1-1-65

All distances must be from the outer boundaries of the Section.

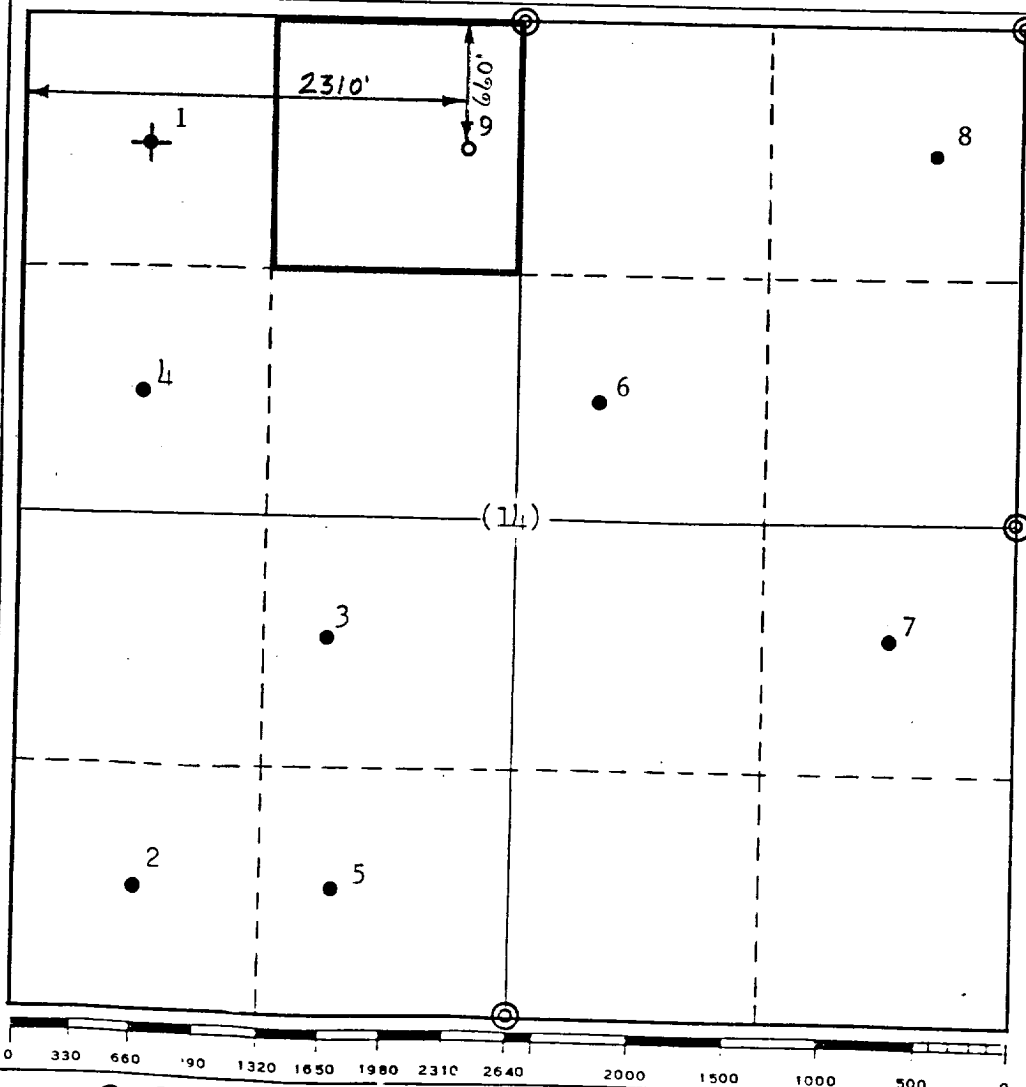
Operator TEXACO Inc.			Lease New Mexico "BG" State NCT-1		Well No. 9
Unit Letter C	Section 14	Township 14 South	Range 33 East	County Lea	
Actual Footage Location of Well: 660 feet from the North line and 2310 feet from the West line Sec. 14					
Ground Level Elev. 4196'	Producing Formation Bough "A"		Pool Saunders Permo Upper Penn	Dedicated Acreage: 40 Acres	

1. Outline the acreage dedicated to the subject well by colored pencil or hachure marks on the plat below.
2. If more than one lease is dedicated to the well, outline each and identify the ownership thereof (both as to working interest and royalty).
3. If more than one lease of different ownership is dedicated to the well, have the interests of all owners been consolidated by communitization, unitization, force-pooling, etc?

☐ Yes ☐ No If answer is "yes," type of consolidation \_\_\_\_\_

If answer is "no," list the owners and tract descriptions which have actually been consolidated. (Use reverse side of this form if necessary.) \_\_\_\_\_

No allowable will be assigned to the well until all interests have been consolidated (by communitization, unitization, forced-pooling, or otherwise) or until a non-standard unit, eliminating such interests, has been approved by the Commission.



CERTIFICATION

I hereby certify that the information contained herein is true and complete to the best of my knowledge and belief.

*B. L. Eiland*

Name

B. L. Eiland

Position

Division Surveyor

Company

TEXACO Inc.

Date

December 1, 1986

I hereby certify that the well location shown on this plat was plotted from field notes of actual surveys made by me or under my supervision, and that the same is true and correct to the best of my knowledge and belief.

Date Surveyed

November 24, 1986

Registered Professional Engineer  
and/or Land Surveyor

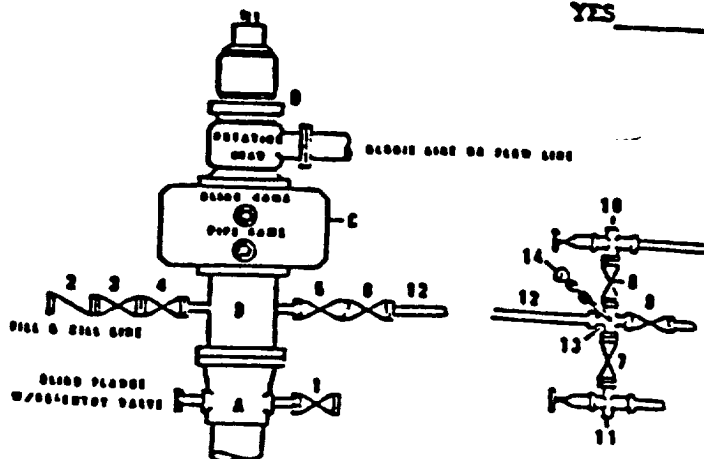
*B. L. Eiland*  
B. L. Eiland

Certificate No. 4386

⊙ - Denotes USGLO Markers



RECEIVED  
JUL 24 1967  
DEF  
NOBBS OFFICE

H<sub>2</sub>S TRIM REGULAR  
YES \_\_\_\_\_ NO \_\_\_\_\_



MATERIAL LIST - CONDITION II - B  
FOR AIR DELIVERABLE

- A Torx Wellhead
- B 3000# W.P. drilling spool with a 2" minimum flanged outlet for kill-line and 3" minimum flanged outlet for choke line
- C 3000# W.P. dual ram type preventer, hydraulic operated with 1" steel, 3000# W.P. control lines (where sub-structure height is adequate, 2-3000# W.P. single ram type preventers may be utilized.)
- D Rotating Head and extended Electric Line.
- 1,3,4. 2" minimum 3000# W.P. flanged full opening steel gate valve, or Halliburton Le Torr Plug valve.
- 7,8
- 2 2" minimum 3000# W.P. back pressure valve
- 3,6,9 3" minimum 3000# W.P. flanged full opening steel gate valve, or Halliburton Le Torr Plug valve.
- 12 3" minimum schedule 80, Grade "B", seamless line pipe
- 13 2" minimum x 3" minimum 3000# W.P. flanged cross
- 10, 11 2" minimum 3000# W.P. adjustable choke bodies
- 14 Cameron Mud Gauge or equivalent (location optional in choke line.)

DATE	DATE	EXT. NO.	SEC. NO.	 <b>TEXACO, INC.</b> PRODUCING DEPARTMENTAL'S (CENT) DALLAS, TEXAS 
SEARCHED BY				
INDEXED BY				
FILED BY				
				<b>EXHIBIT C</b>

RECEIVED  
DEC 4 1985  
OCD  
HOBBS OFFICE