

30-025-22613

NO. OF COPIES RECEIVED	
DISTRIBUTION	
NTA FE	
FILE	
U.S.G.S.	
LAND OFFICE	
OPERATOR	

## NEW MEXICO OIL CONSERVATION COMMISSION

Form C-101  
Revised 1-1-65

5A. Indicate Type of Lease	
STATE <input type="checkbox"/>	FEE <input checked="" type="checkbox"/>
5. State Oil & Gas Lease No.	

## APPLICATION FOR PERMIT TO DRILL, DEEPEN, OR PLUG BACK

1a. Type of Work		7. Unit Agreement Name	
b. Type of Well OIL WELL <input checked="" type="checkbox"/> GAS WELL <input type="checkbox"/> OTHER <input type="checkbox"/>		8. Farm or Lease Name Scott	
2. Name of Operator Adobe Oil & Gas Corporation		9. Well No. 1	
3. Address of Operator 1100 Western United Life Bldg., Midland, TX 79701		10. Field and Pool, or Wildcat Wildcat	
4. Location of Well UNIT LETTER J LOCATIO 1980 DIST FROM THE south LINE AND 1980 FEET FROM THE east LINE OF SEC. 11 TWP. 15-S RGE. 34-E NMPM		12. County Lea	
21. Elevations (Show whether DF, RT, etc.) 4071' GL		18. Proposed Depth 14,000'	19A. Formation Devonian
21A. Kind & Status Plug. Bond Statewide		21B. Drilling Contractor Wilbros Drilling Co.	20. Rotary or C.T. rotary
21C. Approx. Date Work will start 10/10/85			

## PROPOSED CASING AND CEMENT PROGRAM

SIZE OF HOLE	SIZE OF CASING	WEIGHT PER FOOT	SETTING DEPTH	SACKS OF CEMENT	EST. TOP
17½ est	11-3/4#	47# est	350	250	circ
11 est	8-5/8	24 & 32# est	4590	300	3700
7-7/8	5½	17 & 20#	14,000	500	11,300

Union Oil Co. of California drilled this well originally to a TD of 10,707' and plugged and abandoned it on 8/6/68 (copy of plugging record attached).

Adobe Oil & Gas Corporation requests approval to re-enter, tie-back from the cut off 8-5/8" csg @ 1430', drill cement plugs, and clean out to 10,707'. Then deepen 7-7/8" hole to 14,000' to test the Devonian formation.

BLOWOUT PREVENTORS: 1 - 900 Series Double Gate w/Blind & Pipe Rams & Hydril (bag type)

Permit Expires 6 Months From Approval  
Date Unless Drilling Underway.

IN ABOVE SPACE DESCRIBE PROPOSED PROGRAM: IF PROPOSAL IS TO DEEPEN OR PLUG BACK, GIVE DATA ON PRESENT PRODUCTIVE ZONE AND PROPOSED NEW PRODUCTIVE ZONE. GIVE BLOWOUT PREVENTER PROGRAM, IF ANY.

I hereby certify that the information above is true and complete to the best of my knowledge and belief.

Signed Jerry Sexton Title V.P.-Prod. Date 10/1/85

(This space for State Use)

ORIGINAL SIGNED BY JERRY SEXTON

APPROVED BY DISTRICT 1 SUPERVISOR TITLE  DATE

CONDITIONS OF APPROVAL, IF ANY:

OCT 2 - 1985

**NEW MEXICO OIL CONSERVATION COMMISSION**  
**WELL LOCATION AND ACREAGE DEDICATION PLAT**

Form C-102  
 Supersedes C-128  
 Effective 1-4-85

All distances must be from the outer boundaries of the Section.

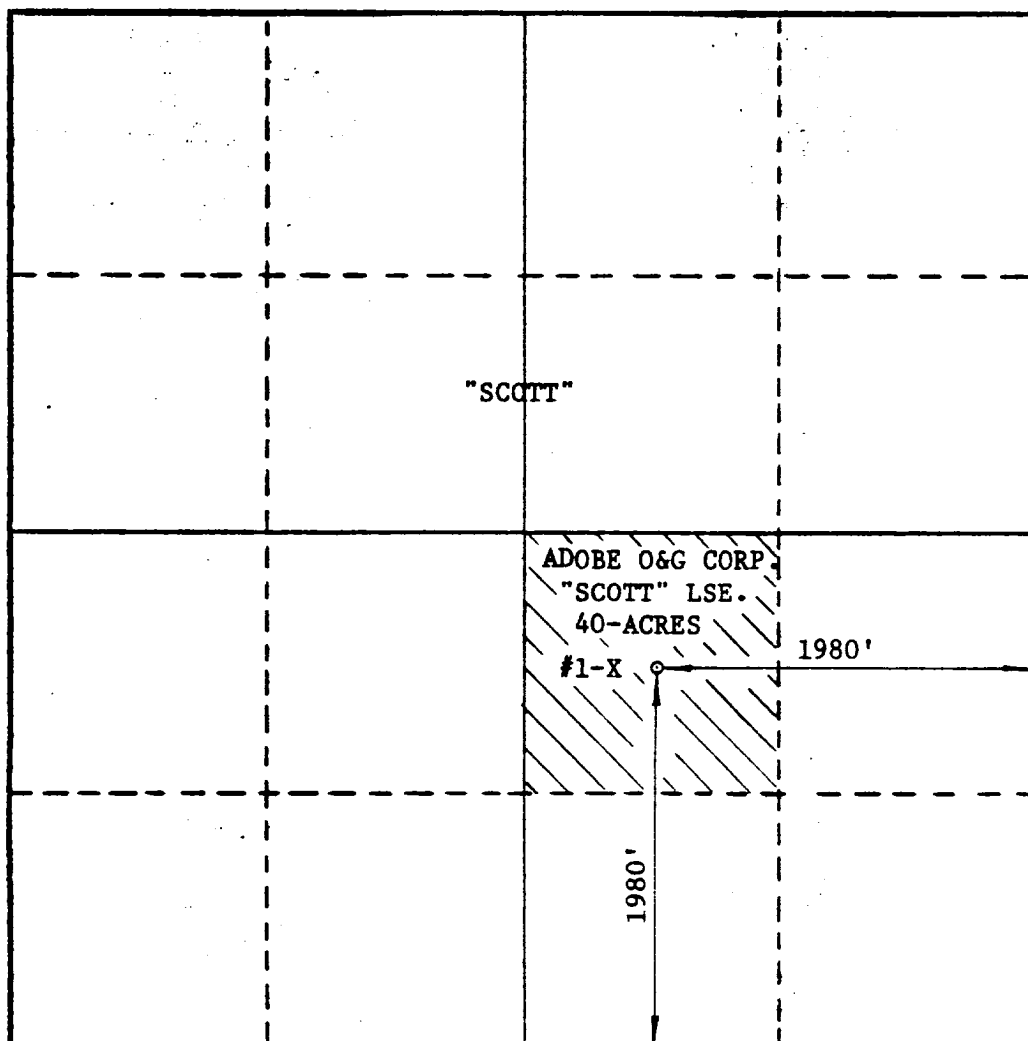
Operator <b>ADOBE OIL &amp; GAS CORPORATION</b>			Lease <b>SCOTT</b>		Well No. <b>1-48</b>
Unit Letter <b>"J"</b>	Section <b>11</b>	Township <b>-15-S</b>	Range <b>-34-E</b>	County <b>LEA</b>	
Actual Footage Location of Well: <b>1980</b> feet from the <b>SOUTH</b> line and <b>1980</b> feet from the <b>EAST</b> line					
Ground Level Elev. <b>4071</b>	Producing Formation <b>DEVONIAN</b>		Pool <b>WILDCAT</b>		Dedicated Acreage: <b>40</b> Acres

1. Outline the acreage dedicated to the subject well by colored pencil or hachure marks on the plat below.
2. If more than one lease is dedicated to the well, outline each and identify the ownership thereof (both as to working interest and royalty).
3. If more than one lease of different ownership is dedicated to the well, have the interests of all owners been consolidated by communitization, unitization, force-pooling, etc?

☐ Yes   ☐ No   If answer is "yes;" type of consolidation \_\_\_\_\_

If answer is "no," list the owners and tract descriptions which have actually been consolidated. (Use reverse side of this form if necessary.) \_\_\_\_\_

No allowable will be assigned to the well until all interests have been consolidated (by communitization, unitization, forced-pooling, or otherwise) or until a non-standard unit, eliminating such interests, has been approved by the Commission.



**CERTIFICATION**

I hereby certify that the information contained herein is true and complete to the best of my knowledge and belief.

*Bill Owens*  
 Name **Bill Owens**

Position  
**V.P.-Prod.**

Company  
**Adobe Oil & Gas Corporation**

Date  
**10/1/85**

I hereby certify that the well location shown on this plat was plotted from field notes of actual surveys made by me or under my supervision, and that the same is true and correct to the best of my knowledge and belief.

Date Surveyed <b>JULY 17, 1985</b>
Registered Professional Engineer and/or Land Surveyor <i>Max A. Schumann Jr.</i> <b>MAX A. SCHUMANN JR.</b>
Certificate No. <b>1510</b>

0 320 640 960 1280 1600 1920 2240 2560 2880 3200 3520 3840 4160 4480 4800 5120 5440 5760 6080 6400

NO. OF COPIES RECEIVED	
DISTRIBUTION	
SANTA FE	
FILE	
U.S.G.S.	
LAND OFFICE	
OPERATOR	

# NEW MEXICO OIL CONSERVATION COMMISSION

AUG 13 4 18 PM '68

Form C-103  
Supersedes Old  
C-102 and C-103  
Effective 1-4-65

5a. Indicate Type of Lease
State <input type="checkbox"/> Fee <input type="checkbox"/>
5. State Oil & Gas Lease No.

## SUNDRY NOTICES AND REPORTS ON WELLS

(DO NOT USE THIS FORM FOR PROPOSALS TO DRILL OR TO DEEPEN OR PLUG BACK TO A DIFFERENT RESERVOIR. USE "APPLICATION FOR PERMIT -" (FORM C-101) FOR SUCH PROPOSALS.)

1. <input type="checkbox"/> OIL WELL <input type="checkbox"/> GAS WELL <input type="checkbox"/> OTHER- <b>Dry Hole</b>	7. Unit Agreement Name
2. Name of Operator <b>Union Oil Company of California</b>	8. Farm or Lease Name <b>Scott</b>
3. Address of Operator <b>P. O. Box 671, Midland, Texas 79701</b>	9. Well No. <b>1</b>
4. Location of Well UNIT LETTER <b>J</b> <b>1960</b> FEET FROM THE <b>South</b> LINE AND <b>1980</b> FEET FROM THE <b>East</b> LINE, SECTION <b>11</b> TOWNSHIP <b>15-S</b> RANGE <b>34-E</b> NMPM.	10. Field and Pool, or Wildcat <b>Wildcat</b>
15. Elevation (Show whether DF, RT, GR, etc.) <b>4066.5 GL</b>	12. County <b>Lea</b>

## Check Appropriate Box To Indicate Nature of Notice, Report or Other Data

### NOTICE OF INTENTION TO:

PERFORM REMEDIAL WORK ☐  
TEMPORARILY ABANDON ☐  
PULL OR ALTER CASING ☐  
OTHER ☐

PLUG AND ABANDON ☒  
CHANGE PLANS ☐

### SUBSEQUENT REPORT OF:

REMEDIAL WORK ☐  
COMMENCE DRILLING OPNS. ☐  
CASING TEST AND CEMENT JOBS ☐  
OTHER ☐  
ALTERING CASING ☐  
PLUG AND ABANDONMENT ☒

17. Describe Proposed or Completed Operations (Clearly state all pertinent details, and give pertinent dates, including estimated date of starting any proposed work) SEE RULE 1708.

*11 3/4" Surface Casing set at at 350' w/250 5x.*

Received verbal permission from Mr. Joe D. Ramay to plug and abandon 8-3-68.

Spotted cement plug #1 with 35 sacks cement from 9585' to 9464'  
Spotted cement plug #2 with 25 sacks cement from 8071' to 7985'  
Spotted cement plug #3 with 35 sacks cement from 6168' to 6047'  
Spotted cement plug #4 with 50 sacks cement from 4640' to 4467'  
Spotted cement plug #5 with 50 sacks cement from 4245' to 4072'

*-8 5/8" @ 4590*

Cut off 8-5/8" OD casing at 1430' and recovered 1415'.

Spotted cement plug #6 with 25 sacks cement from 1450' to 1400'  
Spotted cement plug #7 with 50 sacks cement from 370' to 282'  
Spotted cement plug #8 with 10 sacks cement from 17' to 0'

Cut off 11-5/4" OD casing head and installed dry hole marker.  
Plugging completed 8-6-68.

18. I hereby certify that the information above is true and complete to the best of my knowledge and belief.

SIGNED R. S. Ladd, Jr. TITLE District Drilling Supt.

DATE 8-9-68

APPROVED BY John W. Ramay  
CONDITION OF APPROVAL, IF ANY:

TITLE Geologist

DATE APR 1 1968

RECEIVED

OCT - 2 1985

O.C.D.  
HOBBS OFFICE