

NEW MEXICO OIL CONSERVATION COMMISSION
WELL LOCATION AND ACREAGE DEDICATION PLAT

Form C-102
Supersedes C-128
Effective 1-1-65

All distances must be from the outer boundaries of the Section

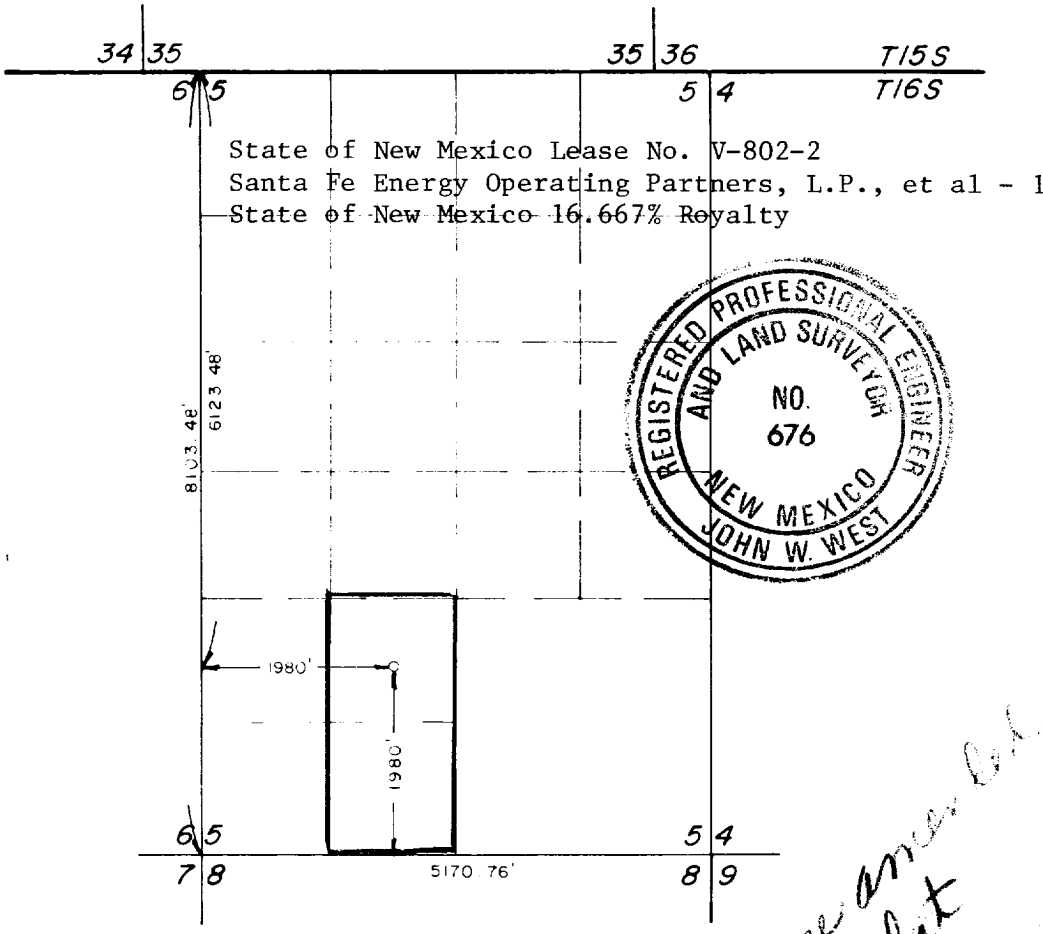
Operator Santa Fe Energy Operating Partners Ltd.		Lease Humble Hume 5A State			Well No. 1
Tract Letter S	Section 5	Township 16 South	Range 34 East	County Lea County	
Actual Footage Location of Well: 1980 feet from the South line and 1980 feet from the West line					
Ground Level Elev. 4138.4	Producing Formation Wolfcamp		Pool North Hume Wolfcamp	Dedicated Acreage: 80 Acres	

1. Outline the acreage dedicated to the subject well by colored pencil or hachure marks on the plat below.
2. If more than one lease is dedicated to the well, outline each and identify the ownership thereof (both as to working interest and royalty).
3. If more than one lease of different ownership is dedicated to the well, have the interests of all owners been consolidated by communitization, unitization, force-pooling, etc?

Yes No If answer is "yes," type of consolidation _____

If answer is "no," list the owners and tract descriptions which have actually been consolidated. (Use reverse side of this form if necessary.) _____

No allowable will be assigned to the well until all interests have been consolidated (by communitization, unitization, forced-pooling, or otherwise) or until a non-standard unit, eliminating such interests, has been approved by the Commission.



Scale: 1" = 2000'

CERTIFICATION	
I hereby certify that the information contained herein is true and complete to the best of my knowledge and belief.	
Name	<i>Michael R. Burton</i>
Position	Sr. Drilling Engineer
Company	Santa Fe Energy Operating Partners, L.P.
Date	May 13, 1988
I hereby certify that the well location shown on this plat was plotted from field notes of actual surveys made by me or under my supervision, and that the same is true and correct to the best of my knowledge and belief.	
Date Surveyed	May 6, 1988
Registered Professional Engineer and/or Land Surveyor	
<i>John W. West</i>	
Certificate No.	JOHN W. WEST 676
Ronald J. Eidson 3239	

88-68874

ETP

15 1988
FBI
HONOLULU OFFICE