

District I
1625 N. French Dr., Hobbs, NM 88240
District II
811 South First, Artesia, NM 88210
District III
1000 Rio Brazos Road, Aztec, NM 87410
District IV
2040 South Pacheco, Santa Fe, NM 87505

State of New Mexico
Energy Minerals and Natural Resources

Form C-101
Revised March 17, 1999

Oil Conservation Division
2040 South Pacheco
Santa Fe, NM 87505

Submit to appropriate District Office
State Lease - 6 Copies
Fee Lease - 5 Copies

AMENDED REPORT

APPLICATION FOR PERMIT TO DRILL, RE-ENTER, DEEPEN, PLUGBACK, OR ADD A ZONE

¹ Operator Name and Address Ocean Energy Resources, Inc 1670 Broadway, Suite 2700 Denver, CO 80202		² OGRID Number 169355
³ Property Code 23826	⁵ Property Name Townsend "2" State Com	³ API Number 30 - 025-34519
		⁶ Well No. 1

⁷ Surface Location

UL or lot no.	Section	Township	Range	Lot Idn	Feet from the	North/South line	Feet from the	East/West line	County
15	2	16S	35E		2970	South	1980	East	Lea

⁸ Proposed Bottom Hole Location If Different From Surface

UL or lot no.	Section	Township	Range	Lot Idn	Feet from the	North/South line	Feet from the	East/West line	County
⁹ Proposed Pool 1 Townsend; Permian Upper Cisco Perm					¹⁰ Proposed Pool 2				

¹¹ Work Type Code P	¹² Well Type Code O	¹³ Cable/Rotary	¹⁴ Lease Type Code S	¹⁵ Ground Level Elevation 3990'
¹⁶ Multiple No	¹⁷ Proposed Depth 11,250'	¹⁸ Formation Cisco	¹⁹ Contractor Lucky Well Service	²⁰ Spud Date

²¹ Proposed Casing and Cement Program

Hole Size	Casing Size	Casing weight/foot	Setting Depth	Sacks of Cement	Estimated TOC
17-1/2"	13-3/8"	48#	436'	415 sx "C"	Surface
11"	8-5/8"	32#	4740'	1625 sx "C"	Surface
7-7/8"	4-1/2"	11.6#	12798'	800 sx super "H"	9300'

²² Describe the proposed program. If this application is to DEEPEN or PLUG BACK, give the data on the present productive zone and proposed new productive zone. Describe the blowout prevention program, if any. Use additional sheets if necessary.

OERI proposes to plug back from the Atoka formation and test the productivity of the Cisco formation at approximately 11,100'. A CIBP will be set at 11250' w/ 20' cement on top. If the Cisco is deemed non-productive, the well will be plugged and abandoned per state regulations.

Permit Expires 1 Year From Approval Date
Plug-Back

²³ I hereby certify that the information given above is true and complete to the best of my knowledge and belief. Signature: <i>Chad M. Johnson</i>	OIL CONSERVATION DIVISION	
	Approved by: <i>[Signature]</i>	Title: <i>District Engineer</i>
Printed name: Chad M. Johnson	Approval Date: <i>4/17/00</i>	Expiration Date:
Title: Permian Production Engineer	Conditions of Approval:	
Date: 4/17/00	Phone: 303-308-8847	Attached <input type="checkbox"/>

521

DISTRICT I
P.O. Box 1980, Hobbs, NM 88240

State of New Mexico

Energy, Minerals and Natural Resources Department

Form C-102
Revised February 10, 1994
Instruction on back
Submit to Appropriate District Office
State Lease - 4 Copies
Fee Lease - 3 Copies

DISTRICT II
P.O. Drawer DD, Artesia, NM 86210

OIL CONSERVATION DIVISION

P.O. Box 2088

Santa Fe, New Mexico 87504-2088

DISTRICT III
1000 Rio Brazos Rd., Aztec, NM 87410

AMENDED REPORT

WELL LOCATION AND ACREAGE DEDICATION PLAT

API Number 30-025-34519	Pool Code 59847	Pool Name Townsend; Perm'd Cisco Upper Perm
Property Code 23826	Property Name Townsend "2" State Com	Well Number 1
OGRD No. 169355	Operator Name OCEAN ENERGY RESOURCES INC.	Elevation 3990'

Surface Location

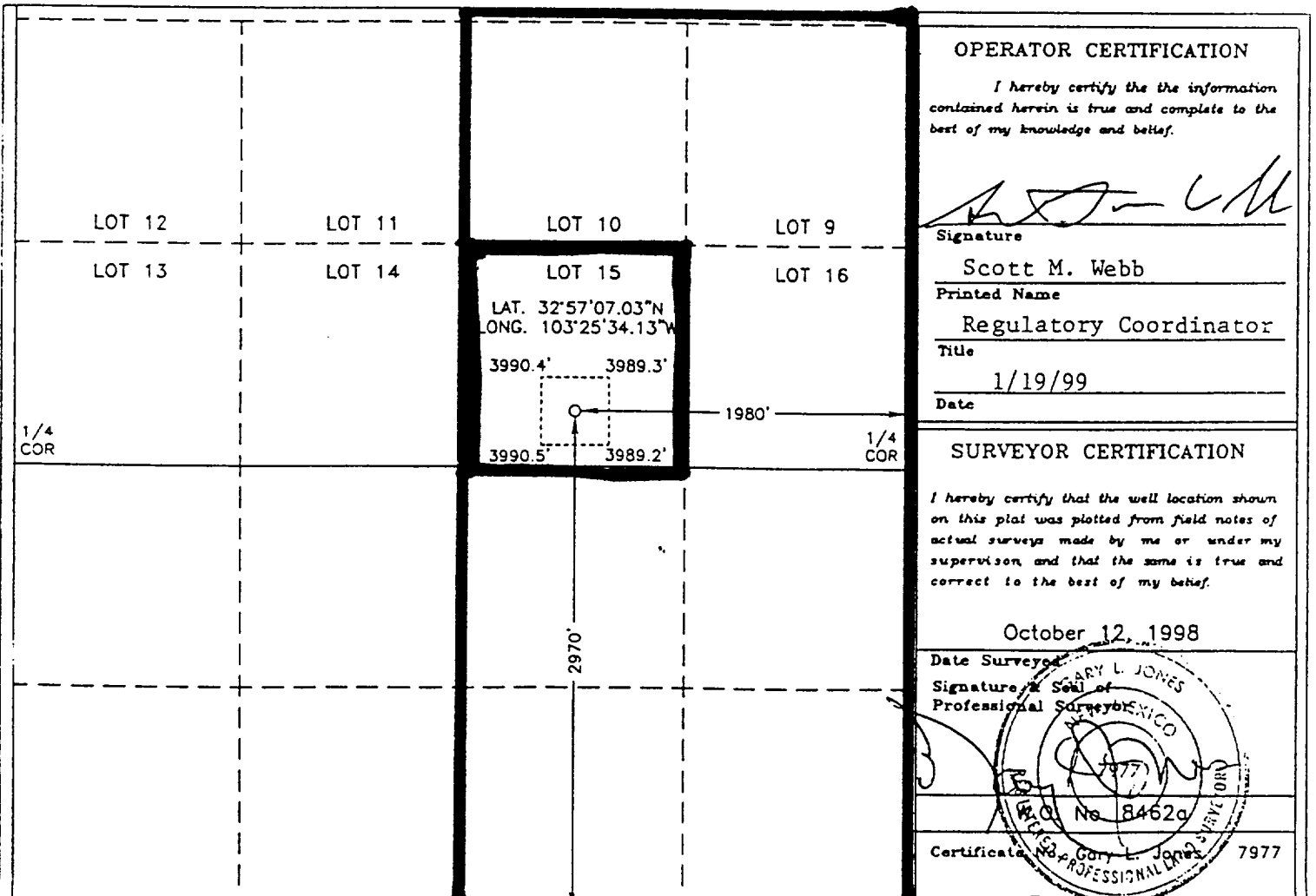
UL or lot No.	Section	Township	Range	Lot Idn	Feet from the	North/South line	Feet from the	East/West line	County
LOT 15	2	16 S	35 E		2970	SOUTH	1980	EAST	LEA

Bottom Hole Location If Different From Surface

UL or lot No.	Section	Township	Range	Lot Idn	Feet from the	North/South line	Feet from the	East/West line	County

Dedicated Acres 40	Joint or Infill	Consolidation Code	Order No.
-----------------------	-----------------	--------------------	-----------

NO ALLOWABLE WILL BE ASSIGNED TO THIS COMPLETION UNTIL ALL INTERESTS HAVE BEEN CONSOLIDATED OR A NON-STANDARD UNIT HAS BEEN APPROVED BY THE DIVISION



OPERATOR CERTIFICATION

I hereby certify that the information contained herein is true and complete to the best of my knowledge and belief.

[Signature]
Signature

Scott M. Webb
Printed Name

Regulatory Coordinator
Title

1/19/99
Date

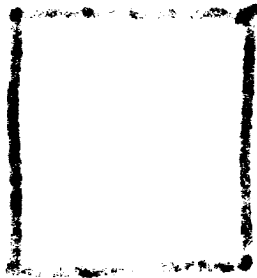
SURVEYOR CERTIFICATION

I hereby certify that the well location shown on this plat was plotted from field notes of actual surveys made by me or under my supervision, and that the same is true and correct to the best of my belief.

October 12, 1998

Date Surveyed
[Signature]
Signature & Seal of Professional Surveyor

[Seal]
Professional Surveyor
No. 8462a
7977
Certification No. 8462a 7977



2
11
12
13
14