

UNITED STATES
DEPARTMENT OF THE INTERIOR
BUREAU OF LAND MANAGEMENT

APPLICATION FOR PERMIT TO DRILL OR DEEPEN

1a. TYPE OF WORK

DRILL ☐DEEPEN ☐REENTRY ☒

b. TYPE OF WELL

OIL
WELL ☒GAS
WELL ☐

OTHER

SINGLE
ZONE ☒MULTIPLE
ZONE ☐

2. NAME OF OPERATOR

Lynx Petroleum Consultants, Inc.

3. ADDRESS AND TELEPHONE NO.

P.O. Box 1708, Hobbs, NM 88241 505-392-6950

4. LOCATION OF WELL (Report location clearly and in accordance with any State requirements.)*

At surface

660' FSL & 660' FWL UN. "M"

At proposed prod. zone

Same

14. DISTANCE IN MILES AND DIRECTION FROM NEAREST TOWN OR POST OFFICE*

13 miles South of Maljamar, NM

15. DISTANCE FROM PROPOSED*

LOCATION TO NEAREST

PROPERTY OR LEASE LINE, FT.

(Also to nearest drlg. unit line, if any)

660'

16. NO. OF ACRES IN LEASE

443.40

17. NO. OF ACRES ASSIGNED

TO THIS WELL

160

18. DISTANCE FROM PROPOSED LOCATION*

TO NEAREST WELL, DRILLING, COMPLETED,

OR APPLIED FOR, ON THIS LEASE, FT.

NA

19. PROPOSED DEPTH

12650'

20. ROTARY OR CABLE TOOLS

Rotary

21. ELEVATIONS (Show whether DF, RT, GR, etc.)

3608' GR

22. APPROX. DATE WORK WILL START*

June 15, 2000

23. PROPOSED CASING AND CEMENTING PROGRAM

SIZE OF HOLE	GRADE SIZE OF CASING	WEIGHT PER FOOT	SETTING DEPTH	QUANTITY OF CEMENT
* 17 1/2	13 3/8 H-40	48	516'	450 sxs (Circulated)
* 12 1/4	9 5/8 H&J	32.3	2550'	2550 sxs (Circulated)
8 1/2	5 1/2 N&S	17	12650'	1200 sxs

WELL NAME WAS FORMERLY GREENWOOD UNIT #8 AND SWEENEY FEDERAL #1

* These strings of casing are already set and cemented to surface.

The operator proposes to re-enter this plugged well, drill out cement plugs to 12650' and run and cement 5 1/2" casing at T.D. The following attachments are included as per Onshore Order #1:

Re-entry Program

Surface Use and Operating Plan

Blowout Preventer Equip. Diagram

Location and Elevation Plat

Planned Access Road Diagram

One mile radius map

Drilling Rig Layout

H₂S Drilling Plan

Lease Responsibility Statement

Bonding Information

* An archaeology survey will be provided by Desert West to the Carlsbad BLM office under separate cover.

IN ABOVE SPACE DESCRIBE PROPOSED PROGRAM: If proposal is to deepen, give data on present productive zone and proposed new productive zone. If proposal is to drill or deepen directionally, give pertinent data on subsurface locations and measured and true vertical depths. Give blowout preventer program, if any.

24.

SIGNED Marc Wise Marc WiseTITLE President

(This space for Federal or State office use)

PERMIT NO. _____

APPROVAL DATE _____

Application approval does not warrant or certify that the applicant holds legal or equitable title to those rights in the subject le
CONDITIONS OF APPROVAL, IF ANY:

APPROVED BY _____

TITLE _____

DATE _____

(ORIG. SCD.) ARMANDO A. LOPEZ

Acting
Assistant Field Manager,
Lands And Minerals

JUN 15 2000

*See Instructions On Reverse Side

APPROVED FOR 1 YEAR

BUREAU OF LAND MGMT.
ROSWELL OFFICE

2800 MAY -5 A 10:28

RECEIVED

RE-ENTRY PROGRAM

Lynx Petroleum Consultants, Inc.
Hawkeye Federal No. 1
660' FSL and 660' FWL
Section 7, T-19S, R-32E
Lea County, NM

The following items supplement Form 3160-3 in accordance with instructions contained in Onshore Oil and Gas Orders #1 and #2, and all other applicable federal and state regulations.

1. SURFACE FORMATION : Sandy Soil of Quaternary Age

2. ESTIMATED TOPS OF GEOLOGICAL MARKERS :

Delaware	-	5138'
Bone Spring	-	6920'
Wolfcamp	-	10330'
Strawn	-	11200'
Morrow	-	11830'

3. ESTIMATED DEPTHS TO WATER, OIL, OR GAS FORMATIONS :

Fresh Water	-	Above 200'
*Oil, Gas, and Water	-	Delaware, Wolfcamp, Strawn and Morrow

* Productive horizons to be protected by 5 1/2" casing and cement

4. PROPOSED CASING PROGRAM :

13 3/8"	0'	-	516'	48.0#	H-40	STC	In Place
9 5/8"	0'	-	2550'	32.2#	H & J	STC	In Place
5 1/2"	0'	-	2000'	17.0#	S-95	LTC	Proposed
5 1/2"	2000'	-	10650'	17.0#	N-80	LTC	Proposed
5 1/2"	10650'	-	12650'	17.0#	S-95	LTC	Proposed

5. PRESSURE CONTROL EQUIPMENT : A blowout preventor stack will consist of at least a double-ram blowout preventor rated to ~~3000~~ ⁵⁰⁰⁰ psi working pressure. A sketch of the B.O.P. and Choke Manifold are shown in Exhibits #1 and #1A.

gmc

6. CIRCULATING MEDIUMS : Fresh water mud system 9.0 ppg with 35 viscosity will be used 0' – 12650'.
7. AUXILIARY EQUIPMENT : Full opening Kelly cock, to fit the drill string in use, will be kept on the rig floor at all times.
8. TESTING, LOGGING, AND CORING PROGRAM :
 - Samples - No Samples
 - D.S.T.'s - No D.S.T.'s are planned
 - Logging - Cased Hole Gamma Ray—Neutron--CCL
 - Coring - No Coring
9. ABNORMAL PRESSURES AND TEMPERATURES : None anticipated. Maximum bottom hole pressure should not exceed 5,500 psi.
10. ANTICIPATED STARTING DATE : Re-entry will commence about June 15, 2000. Re-entry should be complete within 7 days. Completion operations (perforations and stimulation) will follow re-entry operations.

SURFACE USE PLAN

Lynx Petroleum Consultants, Inc.
Hawkeye 7 Federal No. 1
660' FSL and 660' FWL
Section 7, T-19S, R-32E
Lea County, NM

This plan is submitted with the "Application for Permit to Drill" the subject well. The purpose of the plan is to determine the location of the proposed well, the proposed construction activities and operations plan, the magnitude of necessary surface disturbance involved, and the procedures to be followed in rehabilitating the surface after completion of the operation, so that a complete appraisal can be made of the environmental effects associated with the operation.

LOCATED : 13 air miles south of Maljamar, New Mexico

OIL & GAS LEASE : NM 104685

ACRES IN LEASE : 443.40

RECORD LESSEE : Lynx Petroleum Consultants, Inc.

BOND COVERAGE : Lessee's \$25,000 statewide bond.

SURFACE OWNER : U. S. Government with grazing permit issued to Snyder Ranches, P.O. Box 2158, Hobbs, NM 88241

WELL SPACING : 160 acres. (Lusk Strawn)

1. EXISTING ROADS :

- A. The wellsite is 660' FSL and 660' FWL of Section 7, T-19S, R-32E, Lea County, NM.
- B. Exhibit "2" is a portion of a road map showing the proposed location, existing roads, and the proposed access road. The well is approximately 13 miles south of Maljamar, NM.
- C. Directions : Drive 11.5 miles south of Maljamar, New Mexico on County Road 126. Turn right on lease road and drive 0.4 miles to the southwest and veer to the right and drive 0.6 miles west. Turn left and drive 0.1 miles to the south.

SURFACE USE PLAN

HAWKEYE 7 FEDERAL #1

2. PLANNED ACCESS ROAD :

- A. Length and Width : Access from existing roads will necessitate 3000' of new road. The road will be bladed 12' wide with 2' shoulders.
- B. Turnouts : One turnout.
- C. Drainage Design : Road will have a drop of 2" from the center line on each side.
- D. Culverts, Cuts, and Fills : None.
- E. Surfacing Material : Four inches of caliche, bladed, watered, and compacted.
- F. Gates, Cattleguards, and Fences : Two cattleguards will be installed through existing fences.
- G. The proposed road is staked.

3. LOCATION OF EXISTING WELLS :

- A. Existing wells are shown on the attached Lease Plat

4. LOCATION OF EXISTING AND/OR PROPOSED FACILITIES :

- A. Existing Facilities : No existing facilities.
- B. New Facilities : 660' FSL and 660' FWL Section 7, T-19S, R-32E, Lea County, New Mexico.

5. LOCATION AND TYPE OF WATER SUPPLY :

- A. Water will be purchased from a commercial source and transported over existing roads and the new access road to the wellsite.

6. SOURCE OF CONSTRUCTION MATERIAL :

- A. Caliche will be hauled from the nearest approved pit.

7. METHODS OF HANDLING WASTE DISPOSAL :

- A. Drill cuttings will be disposed of in the drill pit.

SURFACE USE PLAN

HAWKEYE 7 FEDERAL #1

- B. Drilling fluids will be allowed to evaporate in the drill pits until the pits are dry.
- C. Water produced during testing will be disposed of in the drill pits. Oil produced during testing will be stored in the test tanks until sold.
- D. Current laws and regulations pertaining to the disposal of human waste will be complied with.
- E. Trash, waste paper and garbage will be contained in a fenced trash trailer and disposed of in an approved landfill.

8. ANCILLARY FACILITIES :

- A. None required.

9. WELLSITE LAYOUT :

- A. The attached rig layout plat indicates the relative location and dimensions of the well pad, mud pits, reserve pit and major rig equipment.
- B. The reserve pit will be lined with plastic to prevent loss of water and contain the drilling mud.

10. PLANS FOR RESTORATION OF THE SURFACE :

- A. After completion of drilling and/or completion operations all equipment and other material not needed for producing operations will be removed. Pits will be filled and the location cleaned of all trash and junk to leave the wellsite in as aesthetically pleasing condition as possible.
- B. Any unguarded pits containing fluids will be fenced until they are backfilled.
- C. If the well is non-productive, the disturbed area will be rehabilitated to Federal Agency requirements, and will be accomplished as expeditiously as possible.

11. OTHER INFORMATION :

- A. Terrain : Flat
- B. Soil : Sandy.

SURFACE USE PLAN

HAWKEYE 7 FEDERAL #1

- C. Vegetation : Mesquite, scrub oak, and grasses.
- D. Surface Use : Grazing
- E. Ponds and Streams : None within 1.0 mile.
- F. Water Wells : None within 1.0 mile.
- G. Residences and Buildings : None within 1.0 mile.
- H. Arroyos, Canyons, Etc. : None within 1.0 mile.
- I. Well Sign : A sign identifying and locating the well will be maintained at the wellsite.
- J. Archeological, Historical and Other Cultural Sites : An agent with the Desert West Archaeological Services conducted an archeological survey of the access road and well pad. They will furnish a report and recommendation to the B. L. M. in Carlsbad, NM.
- K. Surface Ownership : The access road and wellsite are located on Public surface.

12. OPERATOR'S REPRESENTATIVE :

Marc Wise
P. O. Box 1708
Hobbs, NM 88241
Phone – (505) 392-6950
Fax – (505) 392-7886

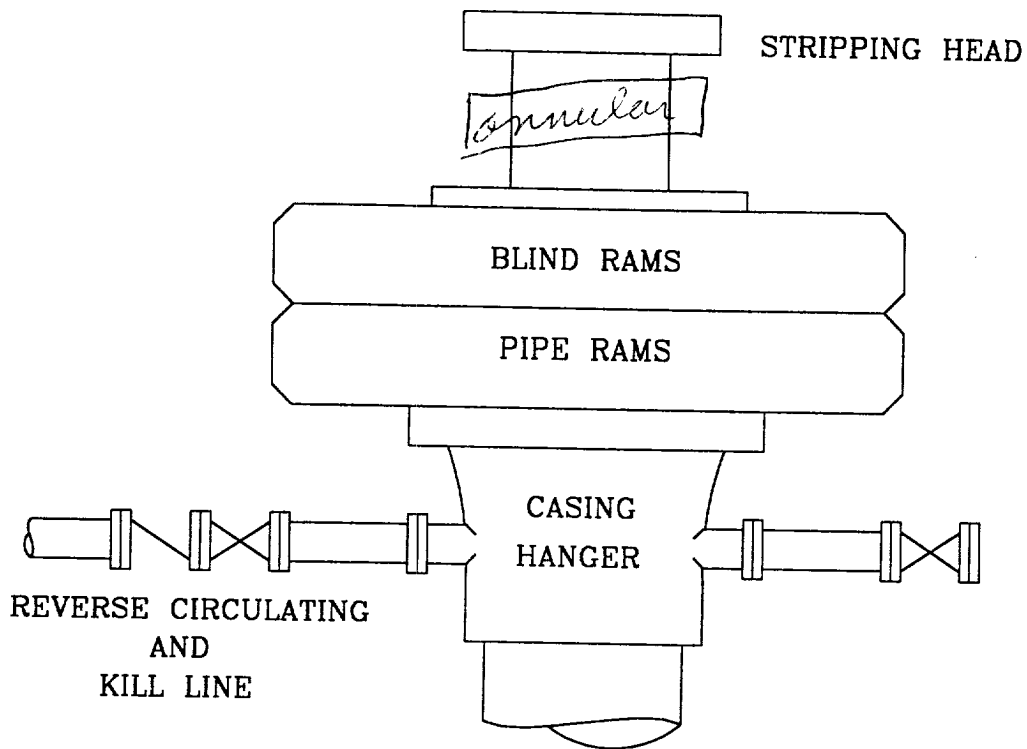
13. CERTIFICATION :

I hereby certify that I, or persons under my direct supervision, have inspected the proposed drill site and access route ; that I am familiar with the conditions which presently exist ; that the statements made in this plan are, to the best of my knowledge, true and correct ; that the work associated with the operations proposed herein will be performed by LYNX PETROLEUM CONSULTANTS, INC. and its sub-contractors in conformity with this plan and the terms and conditions under which it is approved.

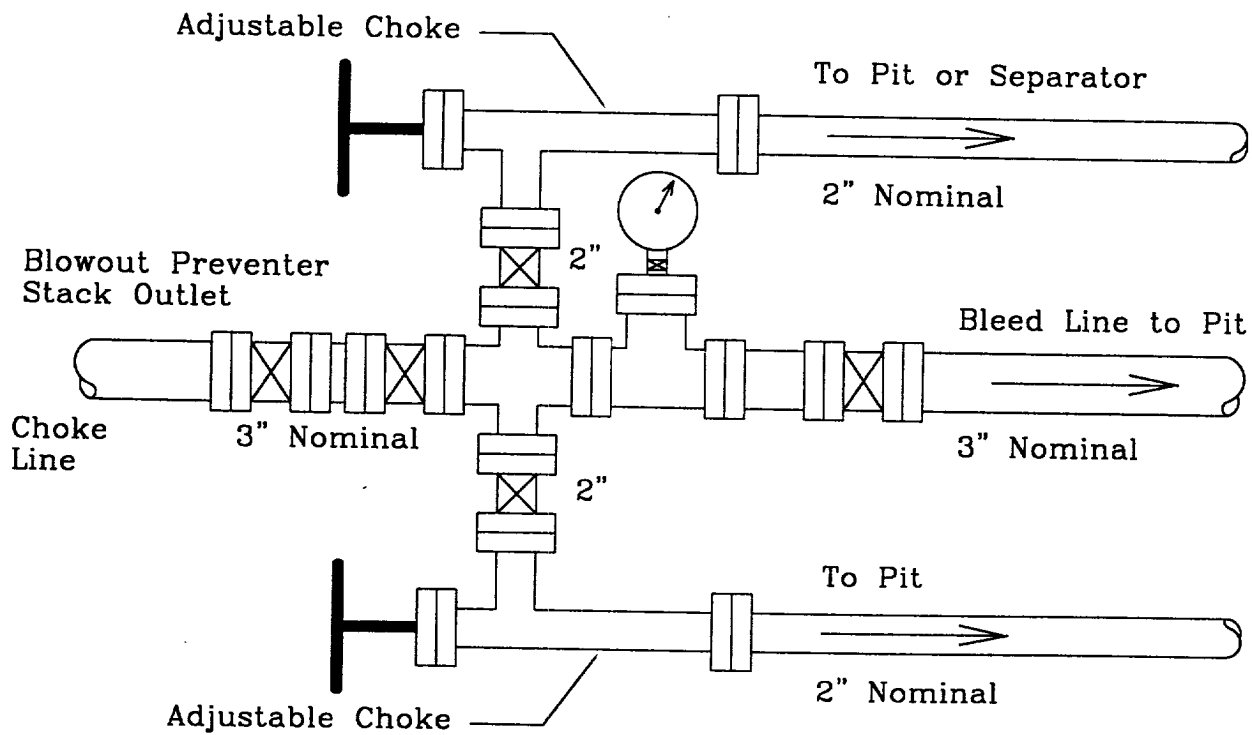
5/4/00
DATE

Marc Wise
MARC WISE – PRESIDENT

MC



5000 PSI WORKING PRESSURE



5000 PSI WORKING PRESSURE

Location: SW/4 SW/4
Sec. 7, T-19S, R-32E
Lea County, NM

Hawkeye Federal No. 1
BLOWOUT PREVENTER AND CHOKE MANIFOLD

EXHIBIT NO. 1

4/20/00

Scale: None

DISTRICT IV
P.O. BOX 2088, SANTA FE, N.M. 87504-2088

Form C-102
Revised February 10, 1994
Submit to Appropriate District Office
State Lease - 4 Copies
Fee Lease - 3 Copies

P.O. Box 2088
Santa Fe, New Mexico 87504-2088

☐ AMENDED REPORT

API Number 30-025-00892		Pool Code 41589	Pool Name LUSK STRAWN	
Property Code 26118	Property Name HAWKEYE 7 FEDERAL			Well Number 1
OGRID No. 013645	Operator Name LYNX PETROLEUM CONSULTANTS, INC.			Elevation 3608

UL or lot No.	Section	Township	Range	Lot Idn	Feet from the	North/South line	Feet from the	East/West line	County
M	7	19 S	32 E		660	SOUTH	660	WEST	LEA

UL or lot No.	Section	Township	Range	Lot Idn	Feet from the	North/South line	Feet from the	East/West line	County
Dedicated Acres	Joint or Infill	Consolidation Code	Order No.						
160	N								

NO ALLOWABLE WILL BE ASSIGNED FOR

NM 104685

SEE DETAIL → 660'

660' ↓

3612.0' 3610.3'

3606.5' 3604.8'

DETAIL

OPERATOR CERTIFICATION

I hereby certify the information contained herein is true and complete to the best of my knowledge and belief.

Marc Wise

Signature _____

Marc Wise

Printed Name _____

President

Title _____

5/4/00

Date _____

SURVEYOR CERTIFICATION

I hereby certify that the well location shown on this plat was plotted from field notes of actual surveys made by me or under my supervision, and that the same is true and correct to the best of my belief.

MAY 1, 2000

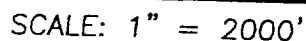
Date Surveyed _____ LMP

Signature & Seal of Professional Surveyor

Ronald J. Edson 5/02/2000

00-11-05482

Certificate No.	RONALD J. EDSON	3239
	GARY EDSON	12641
	MASON McDONALD	12185



SEC. 7 TWP. 19-S RGE. 32-E

SURVEY_____N.M.P.M.

COUNTY _____ LEA

DESCRIPTION 660' FSL & 660' FWL

ELEVATION _____ 3608

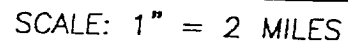
OPERATOR LYNX PETROLEUM
CONSULTANTS, INC.

LEASE HAWKEYE 7 FEDERAL

U.S.G.S. TOPOGRAPHIC MAP
GREENWOOD LAKE, N.M.

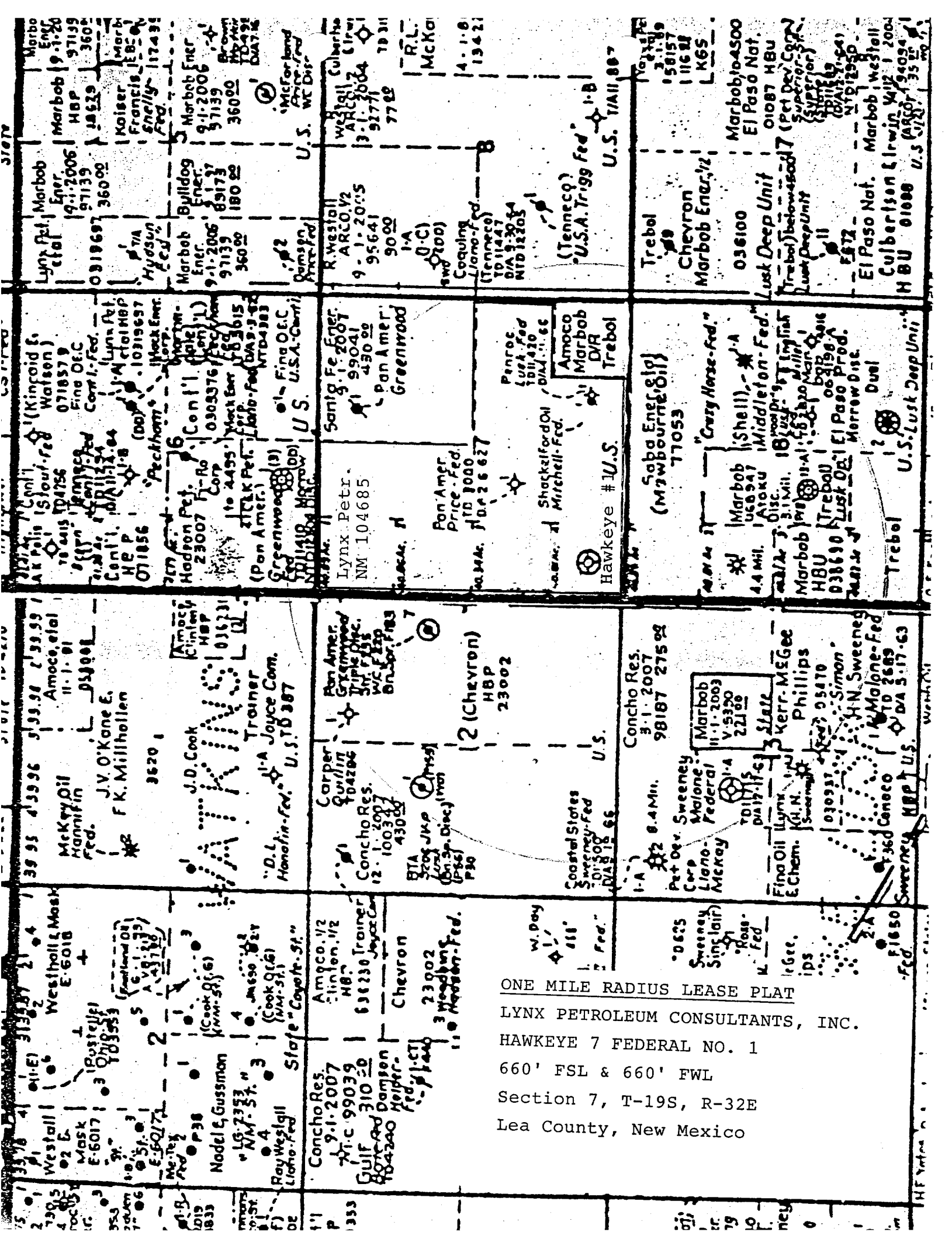
JOHN WEST SURVEYING
HOBBS, NEW MEXICO
(505) 393-3117

NOTES

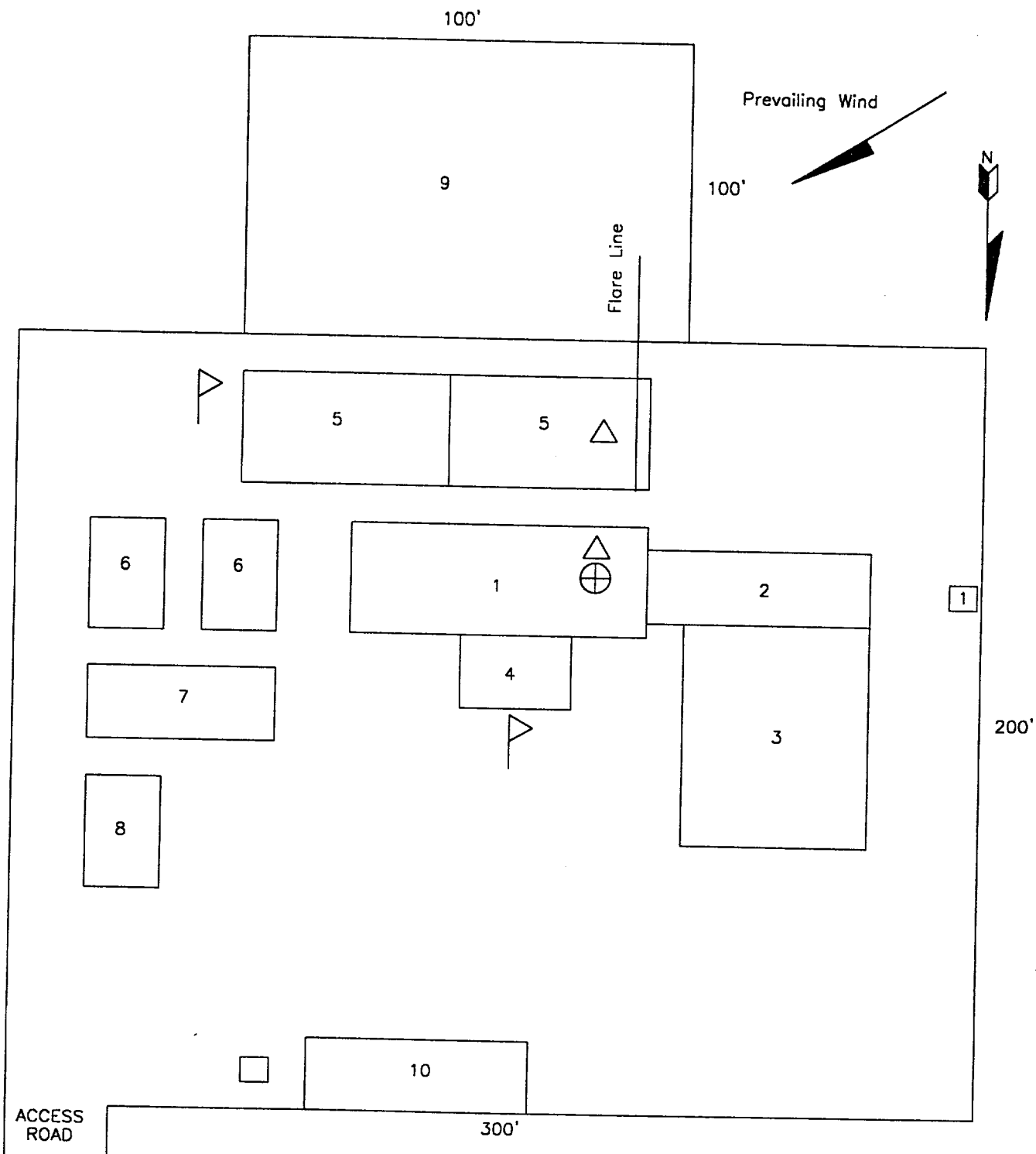


SEC. 7 TWP. 19-S RGE. 32-E
SURVEY _____ N.M.P.M. _____
COUNTY _____ LEA _____
DESCRIPTION 660' FSL & 660' FWL
ELEVATION _____ 3608 _____
OPERATOR _____ LYNX PETROLEUM
CONSULTANTS, INC. _____
LEASE _____ HAWKEYE 7 FEDERAL _____

JOHN WEST SURVEYING
HOBBS, NEW MEXICO
(505) 393-3117



ONE MILE RADIUS LEASE PLAT
LYNX PETROLEUM CONSULTANTS, INC.
HAWKEYE 7 FEDERAL NO. 1
660' FSL & 660' FWL
Section 7, T-19S, R-32E
Lea County, New Mexico



1. SUBSTRUCTURE
2. CATWALK
3. PIPE RACKS
4. DOGHOUSE
5. MUD PITS

6. MUD PUMPS
7. WATER TANK
8. LIGHT PLANT
9. RESERVE PIT
10. TRAILER HOUSE

- △ - H2S Monitor with alarm
- ▢ - Wind Direction Indicator
- - Safe Briefing Area. 1=Primary Area

Location: SW/4 SW/4
 Sec. 7, T-19S, R-32E
 Lea County, NM

HAWKEYE 7 FEDERAL #1 RIG LAYOUT

EXHIBIT NO. A

4/27/00

Scale: None

LYNX PETROLEUM CONSULTANTS, INC.
HYDROGEN SULFIDE DRILLING OPERATIONS
Hawkeye Federal No. 1

I. HYDROGEN SULFIDE TRAINING

All personnel, whether regularly assigned, contracted, or employed on an unscheduled basis, will receive training from a qualified instructor in the following areas prior to commencing drilling operations on this well:

1. The hazards and characteristics of hydrogen sulfide (H_2S).
2. The proper use and maintenance of personal protective equipment and life support systems.
3. The proper use of H_2S detectors, alarms, warning systems, briefing areas, evacuation procedures, and prevailing winds.
4. The proper techniques for first aid and rescue procedures.

In addition, supervisory personnel will be trained in the following areas:

1. The effects of H_2S on metal components. If high tensile tubulars are to be used, personnel will be trained in their special maintenance requirements.
2. Corrective action and shut-in procedures when drilling or reworking a well and blowout prevention and well control procedures.
3. The contents and requirements of the H_2S Drilling Operations Plan and the Public Protection Plan.

There will be an initial training session just prior to encountering a known or probable H_2S zone (within 3 days or 500 feet) and weekly H_2S Drilling Operations Plan and the Public Protection Plan. This plan shall be available at the well site.

II. H_2S SAFETY EQUIPMENT AND SYSTEMS

Note : All H_2S safety equipment and systems will be installed, tested, and operational when drilling reaches a depth of 500 feet above, or three days prior to penetrating the first zone containing or reasonably expected to contain H_2S .

1. Well Control Equipment :
 - A. Flare line with electronic igniter or continuous pilot.
 - B. Choke manifold with a minimum of one remote choke.
 - C. Blind rams and pipe rams to accommodate all pipe sizes with properly sized closing unit.
 - D. Auxiliary equipment to include : annular preventer, mud-gas separator, rotating head, and flare gun with flares.
2. Protective equipment for essential personnel :
 - A. 30-minute air units located in the dog house and at briefing areas, as indicated on well site diagram.
3. H₂S detection and monitoring equipment :
 - A. 2 – portable H₂S monitors positioned on location for best coverage and response. These units have warning lights and audible sirens when H₂S levels of 20 ppm are reached.
 - B. 1 – portable SO₂ monitor positioned near flare line.
4. Visual warning systems :
 - A. Wind direction indicators as shown on well site diagram.
 - B. Caution/Danger signs shall be posted on roads providing direct access to location. Signs will be painted a high visibility yellow with black lettering of sufficient size to be readable at a reasonable distance from the immediate location. Bilingual signs will be used when appropriate. See example attached.
5. Mud program :
 - A. The mud program has been designed to minimize the volume of H₂S circulated to the surface. Proper mud weight, safe drilling practices, and the use of H₂S scavengers will minimize hazards when penetrating H₂S bearing zones.
 - B. A mud-gas separator and an H₂S gas buster will be utilized.

6. Metallurgy :
 - A. All drill strings, casings, tubing, wellhead, blowout preventers, drilling spool, kill lines, choke manifold and lines, and valves shall be suitable for H₂S service.
 - B. All elastomers used for packing and seals shall be H₂S trim.
7. Communication :
 - A. Communications in company vehicles are provided by cellular telephones.
 - B. Land line (telephone) communications at Hobbs office.
8. Well testing :
 - A. Drill stem testing will be performed with a minimum number of personnel in the immediate vicinity which are necessary to safely and adequately conduct the test. The drill stem testing will be conducted during daylight hours and formation fluids will not be flowed to the surface. All drill stem testing operations conducted in an H₂S environment will use the closed chamber method of testing.

—— DANGER ——
POISON GAS
HYDROGEN SULFIDE

Do Not Approach If Red Flag is Flying

STATEMENT ACCEPTING RESPONSIBILITY FOR OPERATIONS

The undersigned accepts all applicable terms, conditions, stipulations, and restrictions concerning operations conducted on the leased land or portion thereof, as described below:

LEASE NO.: NM 104685

LEGAL DESCRIPTION: 660' FSL & 660' FWL
Section 7, T-19S, R-32E
Lea County, New Mexico

FORMATION(S): Lusk Strawn

BOND COVERAGE: \$25,000 Statewide Bond

BLM BOND FILE NO.: B02099

AUTHORIZED SIGNATURE:

Marc Wise Marc Wise

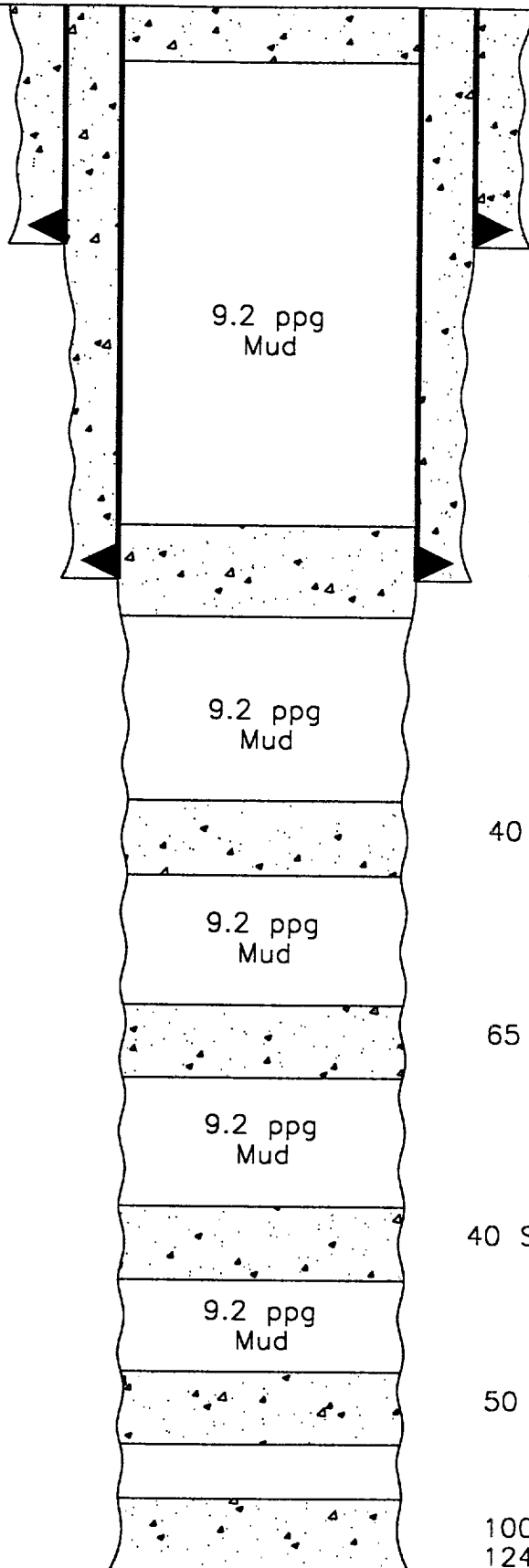
TITLE:

President

DATE:

5/4/00

CURRENT WELLBORE
4/28/00



T.D. @ 12657'

LYNX PETROLEUM
Hawkeye 7 Federal #1
660' FSL & 660' FWL
Sec. 7, T-19S, R-32E
Lea County, N.M.