

SUN OIL COMPANY  
TENTH FEDERAL NO. 1  
660' FNL & 660' FWL, Sec. 27, T19S-R32E  
NEW MEXICO LEASE #14931

(formerly AMOCO, Plains Unit No. 1)

1. GEOLOGIC NAME OF SURFACE FORMATION: "QUATERNARY"

2. ESTIMATED TOPS OF IMPORTANT GEOLOGIC MARKERS:

T. Rustler	- - - -	960'
Base Salt	- - - -	2560
T. Yates	- - - -	2640
T. Delaware	- - - -	5780
T. Bone Springs Lime	-	7368
Bone Springs Pay	- -	10100
T. 3rd Bone Spring Sand	-	10133
Wolfcamp	- - - -	10700

3. ANTICIPATED HYDROCARBON BEARING ZONES:

Bone Springs Pay	10100
T. Bone Springs Sand	10133
Wolfcamp	10700

4. CASING PROGRAM:

Size	Footage	Grade	WT/FT
13-3/8"	512	H-40	48 lb. Already set
9-5/8"	4632	H40 & J55	32 & 40 lb. Already set
5-1/2"	1550	K-55	15.5 lb. New or used
	6200	K-55	15.5 lb. inspected
	3100	K-55	17.0 lb. yellow band
	10850		

5 & 7. OPERATORS MINIMUM SPECIFICATIONS FOR PRESSURE AND BLOW OUT EQUIPMENT TO BE USED:

After testing the 9-5/8" casing string and before drilling into the Wolfcamp formation, the blowout preventers and related control equipment shall be pressure tested to rated working pressures by an independent service company. Any equipment failing to test satisfactorily shall be repaired or replaced. U.S.G.S. office shall be notified in sufficient time for a representative to witness the tests and shall be furnished a copy of the pressure test report.

RECEIVED

NOV 9 1976

OIL CONSERVATION COMM.  
HOBBS, N. M.

Pipe rams and the annular-type preventer shall be actuated at least once each 24 hours and the blind rams each time the drill pipe is out of the hole.

Accumulators shall maintain a pressure capacity reserve at all times to provide for repeated operation of hydraulic preventers.

A drill string safety valve in the open position shall be maintained on the rig floor at all times while drilling operations are being conducted.

Blowout prevention drills shall be conducted as necessary to insure that each drilling crew is properly trained to carry out emergency duties.

Mud system monitoring equipment, with derrick floor indicators and visual and audio alarms, shall be installed and operating before drill into the Wolfcamp and used until production casing is run and cemented. Monitoring equipment shall consist of the following:

- (1) A recording pit level indicator to determine pit volume gains and losses.
- (2) A mud volume measuring device for accurately determining mud volume necessary to fill the hole on trips.
- (3) A flow sensor on the flow-line to warn of any abnormal mud returns from the well.

When coming out of the hole with drill pipe, the annulus shall be filled with mud before the mud level drops below 150 feet. The volume of mud required to fill the hole shall be watched, and any time there is an indication of swabbing, or influx of formation fluids, proper blowout prevention precautions must be taken. The mud shall not be circulated and conditioned except on or near bottom, unless well conditions prevent running the pipe to bottom.

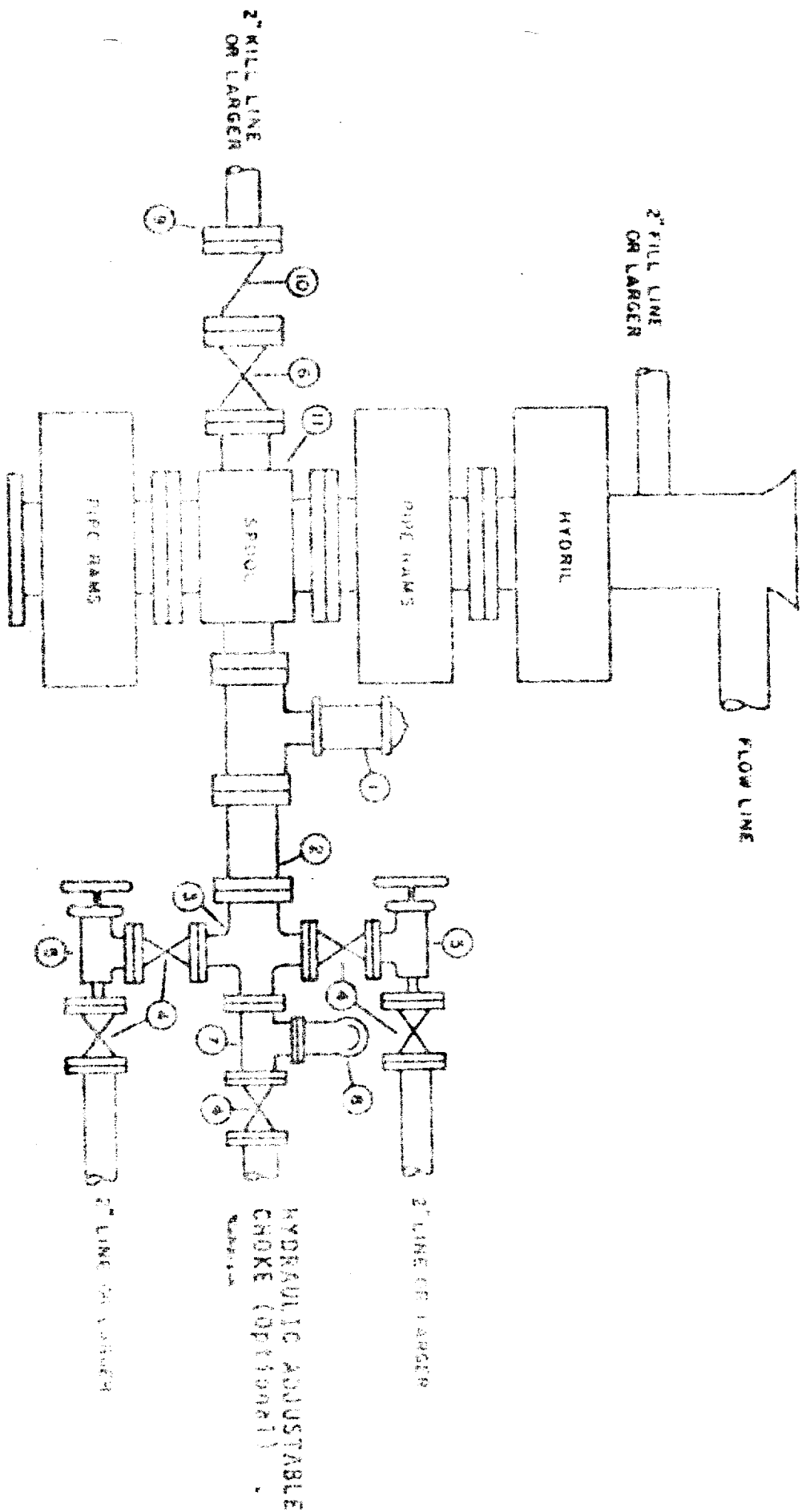
A copy of these requirements shall be posted on the rig floor or in the dog house during the drilling of the well.

RECEIVED

1979 1976

OIL CONSERVATION COMM.  
HOBBS, N. M.

# BLOWOUT PREVENTER ARRANGEMENT



RECEIVED

NOV 9 1976

OIL CONSERVATION COMM.  
HOBBS, N. M.

## 6. TYPE AND MUD SYSTEM CHARACTERISTICS:

<u>From</u>	<u>To</u>	<u>Wt. Lbs/Gals</u>	<u>WL</u>	<u>Vis</u>	<u>Type Mud</u>
0	7300	8.5-9.0	NC	34-36	Fresh water lime for PH control
7300	9800	9.0	20	34-36	Fresh water lime for PH control Sweep hole w/gel slurry every 12-24 hrs.
9800	TD	9.0	10.0	32-36	Gel CMC

8. Anticipate two drill stem tests will be conducted depending on shows in Bone Springs and Wolfcamp. Such tests to be conducted under established prudent industry practice.

No coring is anticipated.

Schlumberger: DIL-GR/FDC/CNL 4532-TD

9. No abnormal pressures, temperatures or hydrogen sulfide gas is expected.

Sun has drilled three wells in the area:

Shearn Federal No. 1  
Jennings Federal No. 1  
Sloan Federal No. 1

10. Estimated starting date: As soon as possible - subject to approval of permit and data presented herein.

RE-ENTRY

MULTI-POINT SURFACE USE AND OPERATIONS PLAN

SUN OIL COMPANY  
TONTON FEDERAL No. 1  
660' FNL & 660' FWL, Sec. 27, T19S-R32E  
LEA COUNTY, NEW MEXICO  
LEASE NEW MEXICO #14931  
(EXPLORATION WELL)

(Formerly AMOCO, Plains Unit No. 1)

This plan is submitted with the Application for Permit to Re-enter the above described plugged and abandoned well. The purpose of the plan is to describe the location of the well, the proposed construction activities and operations plan, the magnitude of necessary surface disturbance involved, and the procedures to be followed in rehabilitating the surface after completion of the operation so that a complete appraisal can be made of the environmental effects associated with the operation.

1. EXISTING ROADS

- A. Exhibit A is a portion of a county map showing the proposed well as staked. Directions to location:

From Hobbs, New Mexico travel west on Highway 62 and 180, 35.5 miles, turn right (north) at Phillips Lusk Plant sign, travel northwest 4.6 miles, turn right, (approx. 1/2 mile from Potash mines), travel north 6.1 miles, turn right through cattleguard, travel east on caliche road 2.4 miles, cross cattleguard, turn right (south), travel 1.3 miles to location. See color coded route to location on map.

- B. Exhibit B is a plat showing all wells within a one-mile radius of the wellsite and the existing access roads.  
No new roadways will be constructed.

- C. A portion of the existing lease roads in Sections 22 and 27 will be repaired as required. This will consist of adding caliche to restore six-inch deep by twelve-foot wide caliche road.

2. PLANNED ACCESS ROADS

- A. Length and Width: No new roads required.
- B. Surface Material: Six inches of caliche, water, compacted and graded.



RECEIVED

NOV 9 1976  
OIL CONSERVATION COMM.  
HOBBS, N. M.

- C. Maximum Grade: Three percent
- D. Turnouts: None required on this short roadway.
- E. Drainage Design: Roadways will be 12 feet wide and crowned for drainage.
- F. Culverts: It is anticipated no culverts will be required.
- G. Cuts and Fills: None anticipated
- H. Gates and Cattleguards: None required

### 3. LOCATION OF EXISTING WELLS

- A. Existing wells within a one-mile radius are shown on Exhibit B.

### 4. LOCATION OF EXISTING AND/OR PROPOSED FACILITIES

- A. Plans are to construct tank battery on well pad. No additional surface disturbance will occur.
- B. If the proposed well is completed and productive, plans are to lay flow line on well pad. Flow line will not be buried.

### 5. LOCATION AND TYPE OF WATER SUPPLY

- A. Water will be purchased and hauled over existing roads shown on Exhibits A & C.

### 6. SOURCE OF CONSTRUCTION MATERIALS

- A. Caliche for surfacing the road and the well pad will be obtained from an existing pit in NE/4 of SE/4 Section 15, T19S-R32E. Location of the pit is shown in Exhibit B.

### 7. METHODS OF HANDLING WASTE DISPOSAL

- A. Drill cuttings will be disposed of in the drilling pits.
- B. Drilling fluids will be allowed to evaporate in the drilling pits until pits are dry.
- C. Water produced during test will be disposed of in the drilling pits. Oil produced during tests will be stored in test tanks until sold.

RECEIVED

NOV 9 1976  
OIL CONSERVATION COMM.  
HOBBS, N. M.

- D. Current Laws and Regulations pertaining to the disposal of human waste will be complied with.
- E. Trash, waste paper, garbage and junk will be buried in a separate trash pit and covered with a minimum 24 inches of dirt. All waste material will be contained to prevent scattering by the wind. Location of trash pit is shown on Exhibit D.
- F. All trash and debris will be buried or removed from the wellsite within 30 days after finishing drilling and/or completion operations.

#### 8. ANCILLARY FACILITIES

- A. None required.

#### 9. WELLSITE LAYOUT

- A. Exhibit D shows the relative location and dimensions of the well pad, mud pits, reserve pit, trash pit, and location of major rig components. (If Exhibit D not included - same will be submitted as soon as contractor is selected through bidding.
- B. Only minor levelling of the wellsite will be required. No significant cuts or fills will be necessary.
- C. The reserve pit will be plastic lined.
- D. The pad and pit area.

#### 10. PLANS FOR RESTORATION OF THE SURFACE

- A. After completion of drilling and/or completion operations all equipment and other material not needed for operations will be removed. Pits will be filled and location cleaned of all trash and junk to leave the wellsite in an aesthetically pleasing condition as possible.
- B. Any unguarded pits containing fluids will be fenced until they are filled.
- C. After abandonment of the well, surface restoration will be in accordance with the agreement with the surface owner. Pits will be filled and location will be cleaned. The pit area, well pad, and all unneeded access road will be ripped to promote revegetation. Rehabilitation should be

RECEIVED

NOV 9 1976

OIL CONSERVATION COMM.  
HOBBS, N. M.

accomplished within 90 days after abandonment. (Alternate if on Federal surface - after abandonment, any special rehabilitation and/or revegetation requirements of the surface management agency will be complied with and accomplished as expeditiously as possible. All pits should be filled and levelled within 90 days after abandonment.)

## 11. OTHER INFORMATION

- A. Topography: Land surface is undulating to gently rolling and dunny. From an elevation of 3607' RDB at the wellsite.
- B. Soil: Soil is a deep fine sand underlain by caliche.
- C. Flora and Fauna: The vegetative cover is generally sparse and consists of mesquite, yucca, shinnery oak, sandsage and perennial native range grasses. Wildlife in the area is that typical of semi-arid desert land and includes coyotes, rabbits, rodents, reptiles, dove, quail, and an occasional antelope.
- D. Ponds and Streams: There are no rivers, streams, lakes or ponds in the area.
- E. Residences and Other Structures: The nearest occupied dwellings are houses at Lusk Plant approximately three miles west.
- F. Archeological, Historical and Cultural Sites: None observed in the area.
- G. Land Use: Grazing and hunting in season.
- H. Surface Ownership: Wellsite is on Federal surface.

## 12. OPERATOR'S REPRESENTATIVE:

The field representatives responsible for assuring compliance with the approved surface use and operations plan are as follows:

V. J. Hale  
2607 Camarie  
Midland, TX 79701  
Office Ph: 915-682-8271  
Home Ph: 915-682-3577

H. L. Bethancourt  
2809 Moss  
Midland, TX 79701  
Office Ph: 915-682-8271  
Home Ph: 915-694-0678

RECEIVED

NOV 9 1976

OIL CONSERVATION COMM.  
HOBBS, N. M.

## 13. CERTIFICATION:

I hereby certify that I, or persons under my direct supervision, have inspected the proposed drillsite and access route; that I am familiar with the conditions which presently exist; that the statements made in this plan are, to the best of my knowledge true and correct; and, that the work associated with the operations proposed herein will be performed by Sun Oil Company and its contractors and sub-contractors in conformity with this plan and the terms and conditions under which it is approved.

                      
Date

H. L. Bethancourt  
Name: H. L. Bethancourt

District Drilling Supt.  
Title



**RECEIVED**

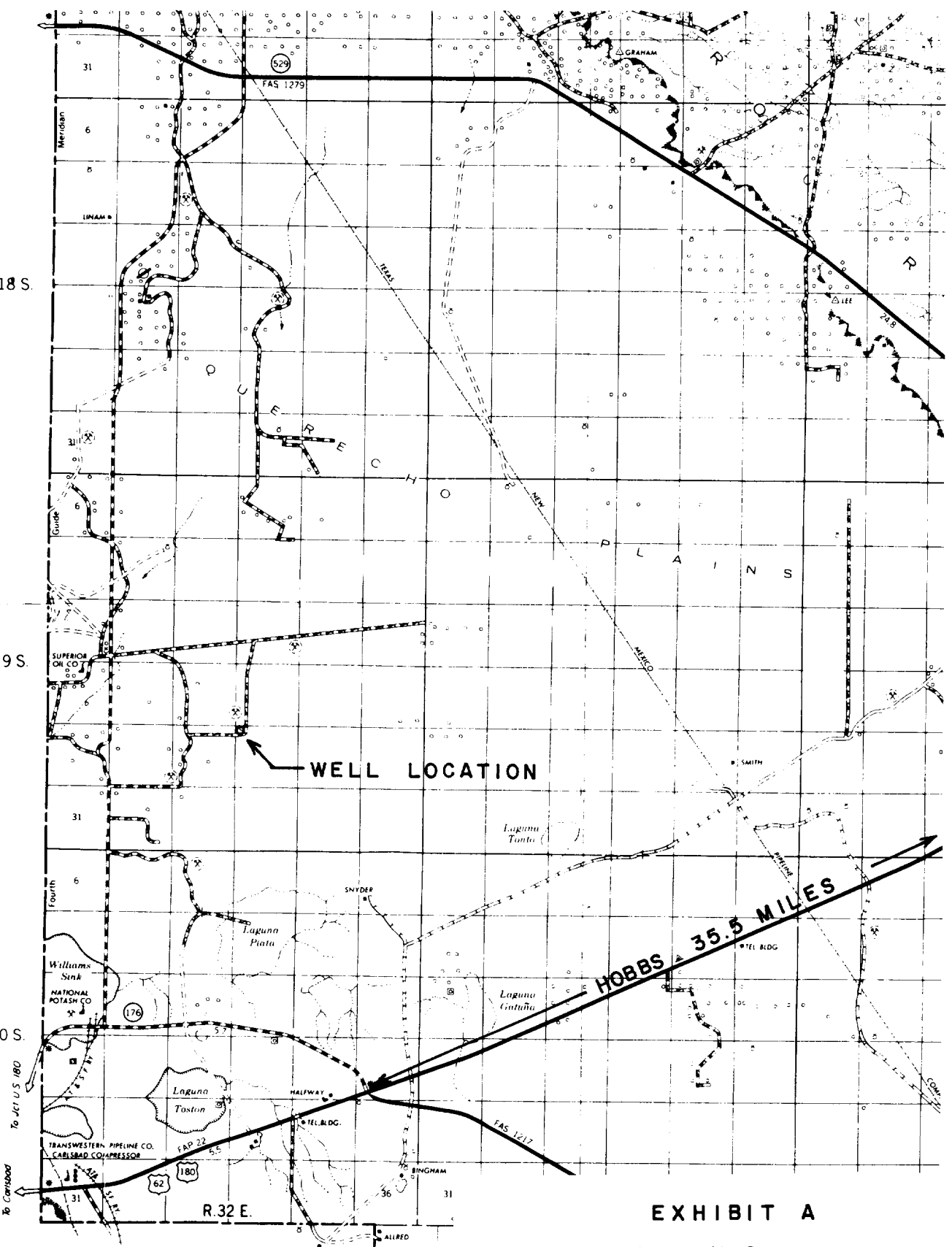
NOV 9 1976  
OIL CONSERVATION COMM.  
HOBBS, N. M.

E D D Y C O

T.18 S.

T.19 S.

T.20 S.



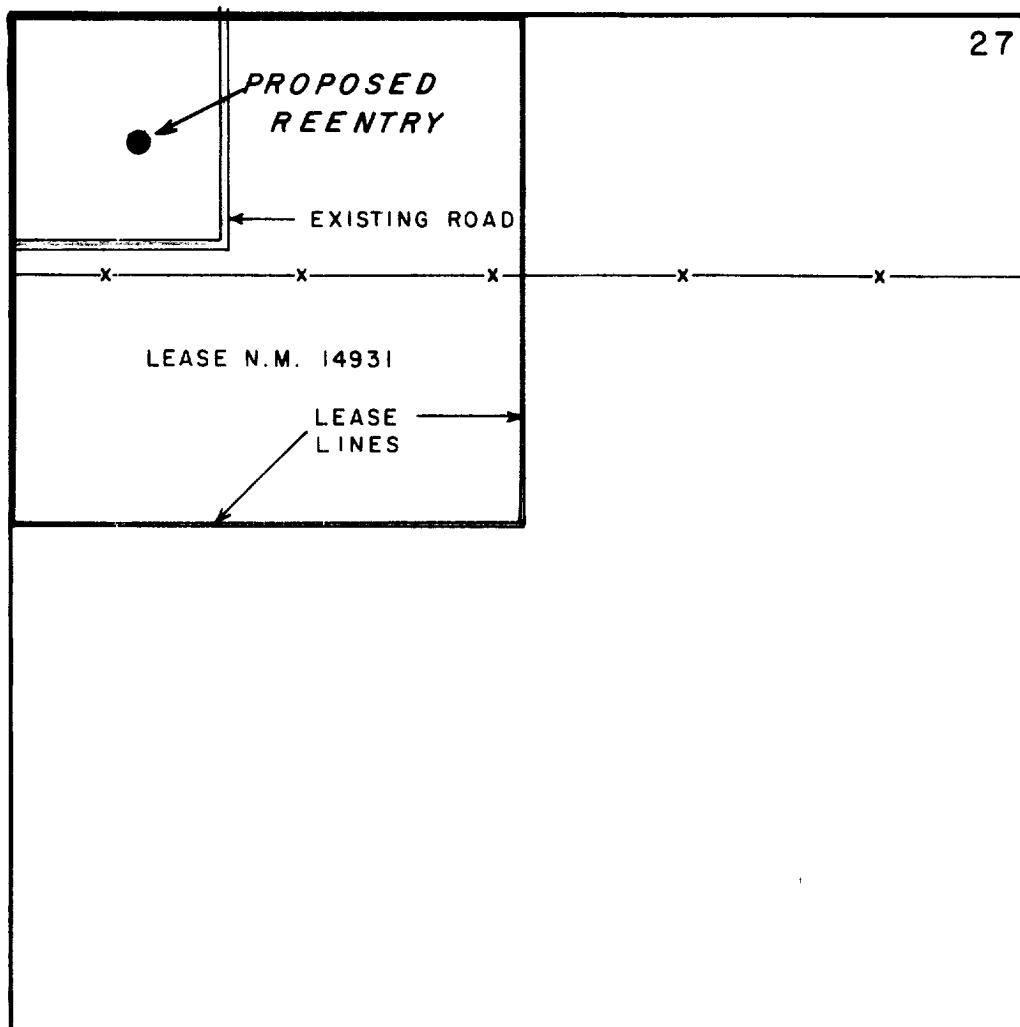
**EXHIBIT A**

**Sun Oil Company**  
**Well No. 1 Tonto Federal**  
 (Formerly Amoco, No. 1 Plains Unit)  
 660' FNL & FWL SEC. 27, T-19-S, R-32-E.  
 Lea County, New Mexico      Scale: 1" = 12,000'

RECEIVED

Oct 2 1976

Oct 2 1976

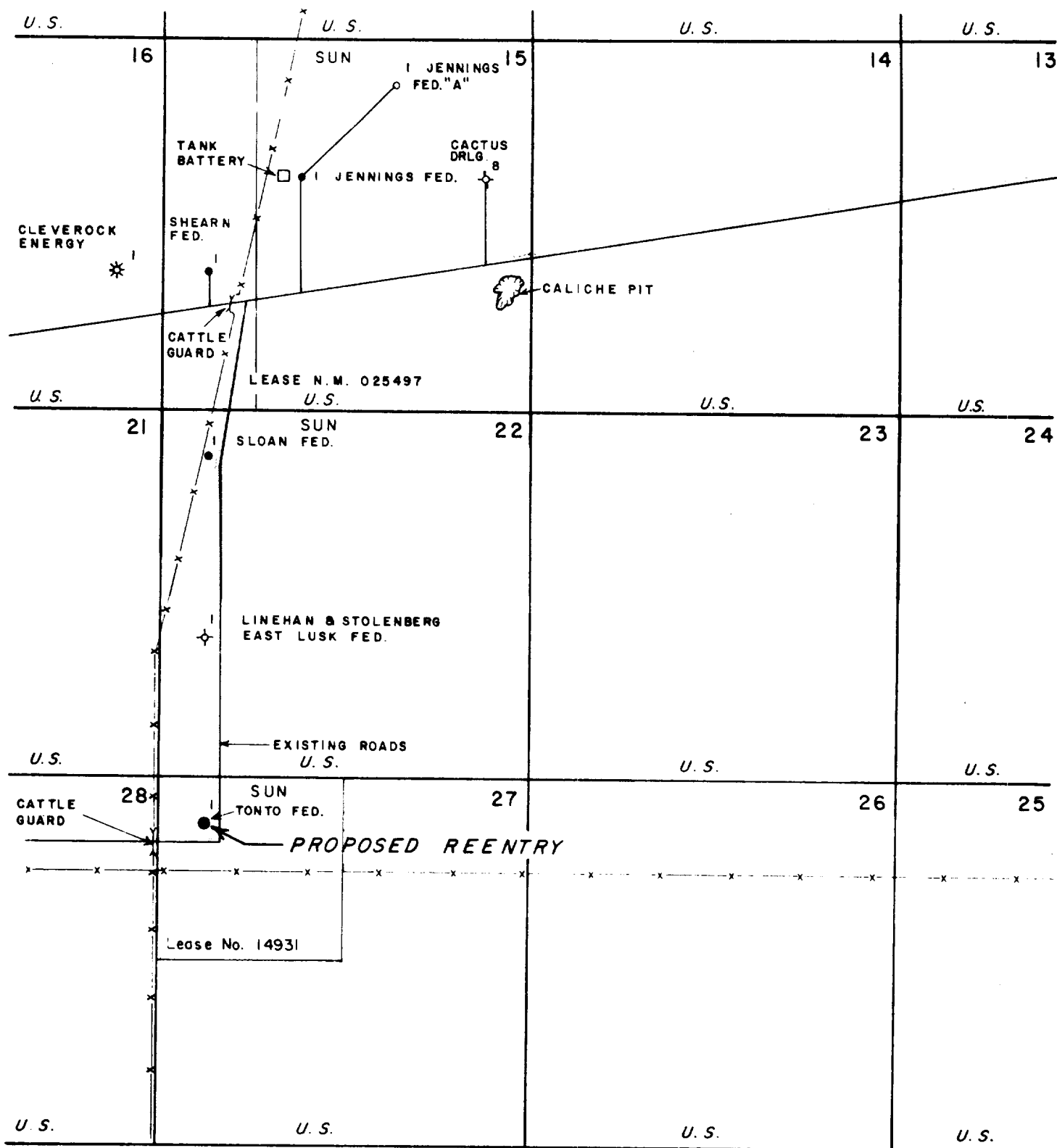


# EXHIBIT C

Sun Oil Company  
 Well No.1 Tonto Federal  
 (Formerly Amoco, No.1 Plains Unit)  
 660' FNL & FWL Sec. 27, T.19-S., R. 32-E.  
 Lea County, New Mexico Scale: 1" = 1000'

REMOVED

1973  
01-10-1973  
11:00, P.M.



# EXHIBIT B

Sun Oil Company  
 Well No. 1 Tonto Federal  
 (Formerly Amoco, No. 1 Plains Unit)  
 660' FNL & FWL Sec. 27, T-19-S, R.-32-E.  
 Lea County, New Mexico Scale: 1" = 2,000'

RECEIVED

1976

OIL & GAS  
HOODS, N. M.

# EXHIBIT D-1

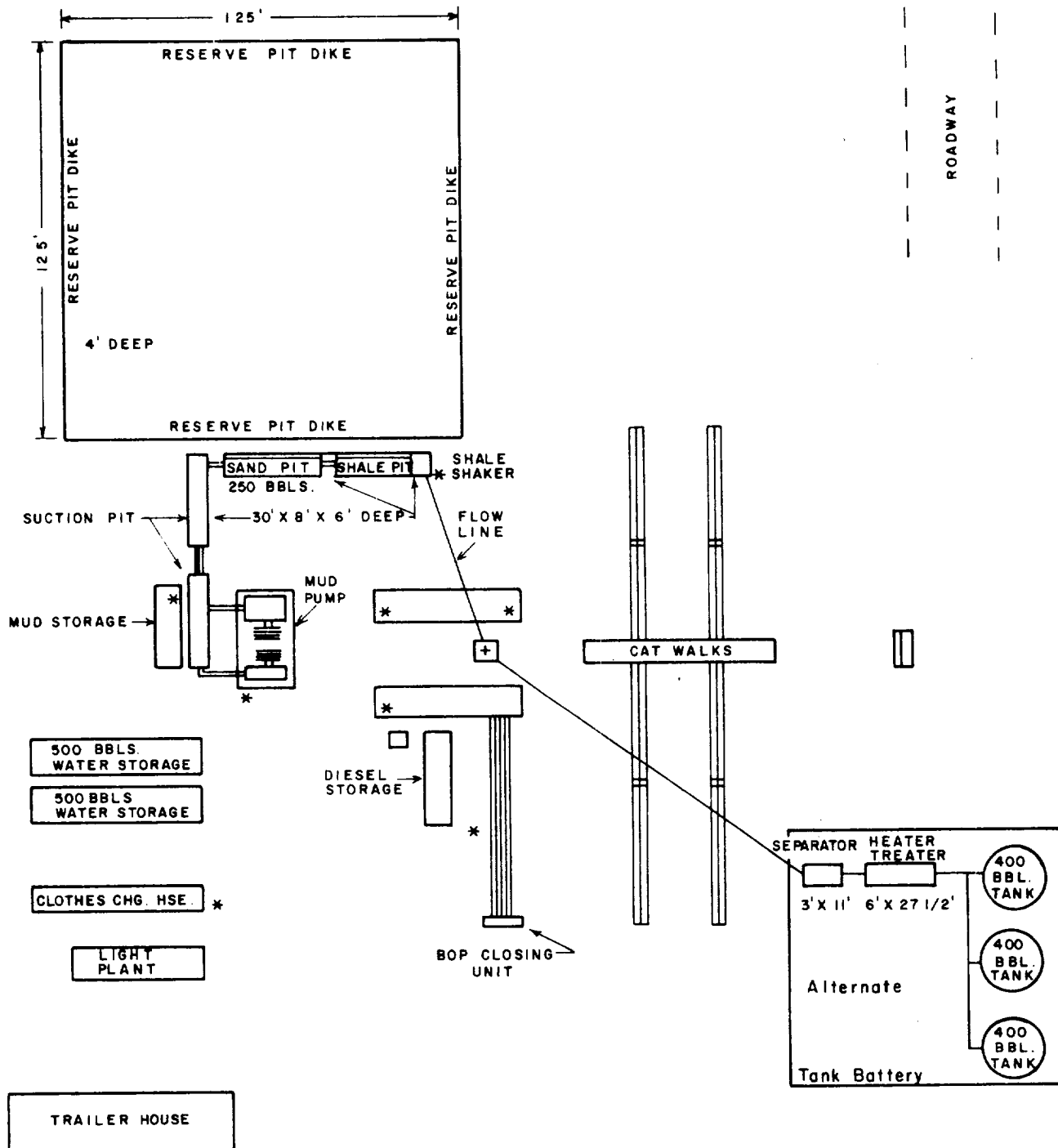
Sun Oil Company

Well No. 1 Tonto Federal

(Formerly Amoco, No. 1 Plains Unit)

660' FNL & FWL Sec. 27, T-19-S, R-32-E.

Lea County, New Mexico No Scale



\* FIRE EXTINGUISHER LOCATIONS



RECEIVED

NOV 1976  
OIL DEPARTMENT COM.  
HOBBS, N. M.

EXHIBIT D-2

Sun Oil Company

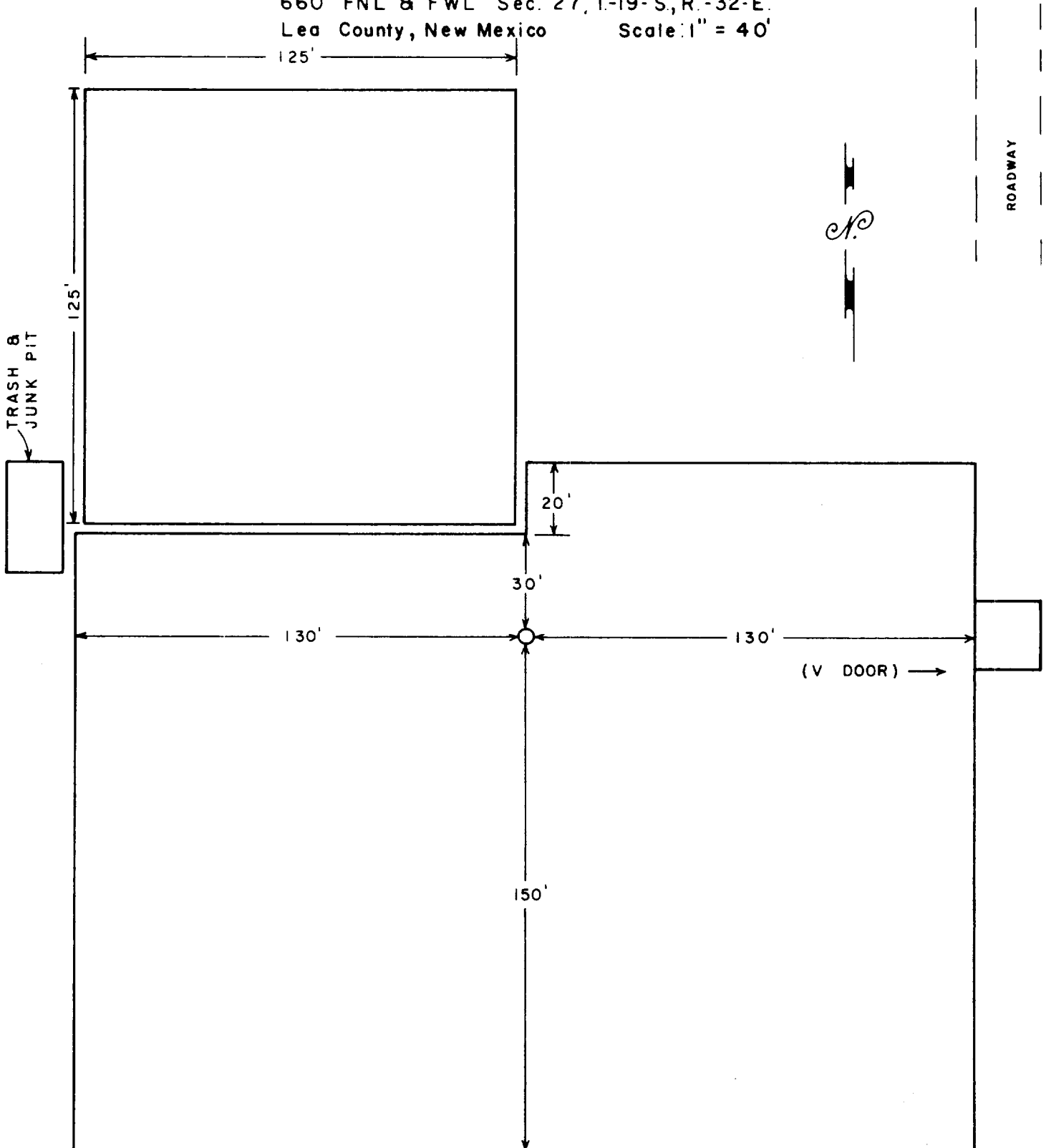
Well No.1 Tonto Federal

(Formerly Amoco, No.1 Plains Unit)

660' FNL & FWL Sec. 27, T-19-S, R.-32-E.

Lea County, New Mexico

Scale: 1" = 40'



RECEIVED

APR 26 1976  
OIL CO. OF CALIF. CH. 2000A.  
TUBES, N. M.

U. S. GEOLOGICAL SURVEY  
P. O. Box 1157  
Hobbs, New Mexico 88240

HOBBS DISTRICT

Sun Oil Company  
No. 1 Tonto Federal  
NW $\frac{1}{4}$ NW $\frac{1}{4}$  sec. 27-19S-32E  
Lea County, N. M.

Above Data Required on Well Sign

CONDITIONS OF APPROVAL

1. Drilling operations authorized are subject to the attached sheet for general requirements for drilling and producing operations.
2. Notify this office (telephone (505) 393-3612) when the well is spudded and in sufficient time for a representative to witness cementing operations.
3. Immediate notice is required of all blowouts, fires, spills, and accidents involving life-threatening injuries or loss of life.
4. Secure prior approval before changing the approved drilling program or commencing plugging operations, plug-back work, casing repair work, or corrective cementing operations.
5. Blowout prevention equipment is to be installed, tested, and in working order before drilling below the surface casing and shall be maintained ready for use until drilling operations are completed.
6. A kill-line is to be properly installed and is not to be used as a fill-up line.
7. Blowout preventers are to have proper casing rams when running casing.
8. Drill string safety valve(s) to fit all pipe in the drill string to be maintained on the rig floor while drilling operations are in progress.
9. Blowout prevention drills are to be conducted as necessary to assure that equipment is operational and that each crew is properly trained to carry out emergency duties. All BOP tests and drills are to be recorded on the driller's log.

RECEIVED

1009 1976

OIL CONSERVATION COMM.  
HOBBS, N. M.

UNITED STATES  
DEPARTMENT OF THE INTERIOR  
GEOLOGICAL SURVEYSUBMIT IN TRIPLICATE  
(Other instructions  
verse side)Form approved  
Budget Bureau No. 42-R1424

5. LEASE DESIGNATION AND SERIAL NO.

NM-05646-A

6. IF INDIAN, ALLOTTEE OR TRIBE NAME

## SUNDRY NOTICES AND REPORTS ON WELLS

(Do not use this form for proposals to drill or to deepen or plug back to a different reservoir.  
Use "APPLICATION FOR PERMIT—" for such proposals.)1. ☐ OIL  
WELL ☒ GAS  
WELL ☐ OTHER

2. NAME OF OPERATOR

PAN AMERICAN PETROLEUM CORPORATION

3. ADDRESS OF OPERATOR

BOX 68, HOBBS, N. M. 88240

4. LOCATION OF WELL (Report location clearly and in accordance with any State requirements.\*  
See also space 17 below.)

At surface

7. UNIT AGREEMENT NAME

8. FARM OR LEASE NAME

PLAINS Unit Federal

9. WELL NO.

1

10. FIELD AND POOL, OR WILDCAT

LUSK STRAWN

11. SEC. T., R., M., OR BLK. AND  
SURVEY OR AREA

27-19-32 NM PM

14. PERMIT NO.

15. ELEVATIONS (Show whether DT, RT, GR, etc.)

3607' R.D.B.

12. COUNTY OR PARISH

LEA

13. STATE

NM

16. Check Appropriate Box To Indicate Nature of Notice, Report, or Other Data

## NOTICE OF INTENTION TO:

TEST WATER SHUT-OFF ☐FRACTURE TREAT ☐SHOOT OR ACIDIZE ☐REPAIR WELL ☐(Other) ☐PULL OR ALTER CASING ☐MULTIPLE COMPLETE ☐ABANDON\* ☐CHANGE PLANS ☐

## SUBSEQUENT REPORT OF:

WATER SHUT-OFF ☐FRACTURE TREATMENT ☐SHOOTING OR ACIDIZING ☐(Other) ☐REPAIRING WELL ☐ALTERING CASING ☐ABANDONMENT\* ☒(NOTE: Report results of multiple completion on Well  
Completion or Recompletion Report and Log form.)17. DESCRIBE PROPOSED OR COMPLETED OPERATIONS (Clearly state all pertinent details, and give pertinent dates, including estimated date of starting any  
proposed work. If well is directionally drilled, give subsurface locations and measured and true vertical depths for all markers and zones perti-  
nent to this work.)

Physical abandonment completed 6-5-70.

Plugged as follows:

Grout Plug set @ 12,500' w/ 3 5x cement cap.

Loaded hole with fluid.

Spot 5 1/2" @ 10,020, 9007 and pulled from 8017

Spot 35 5x cement @ 8045, 50 54 @ 7375,

50 5x @ 4532, 35 54 @ 2700, and 10 54 @ surface  
with P.A. marker.Final Cleanup shall be made and ground  
restored to contour.

18. I hereby certify that the foregoing is true and correct

SIGNED

TITLE

AREA SUPERINTENDENT

DATE JUN 2 6 1970

(This space for Federal or State office use)

APPROVED BY

TITLE

APPROVED

DATE

CONDITIONS OF APPROVAL, IF ANY:

0+ 4- 05646-A  
1- SUSP  
1- R.R.

JUL 2 1970

\*See Instructions on Reverse Side

J L GORDON  
ACTING DISTRICT ENGINEER

RECEIVED

JUL 7 1970

OIL CONSERVATION COMM.  
HOBBS, N. M.

Form approved.  
Budget Bureau No. 42-R1424.

Form approved.  
Budget Bureau No. 42-R1424.

5. LEASE DESIGNATION AND SERIAL NO.

NM-05646-A  
6. IF INDIAN, ALLOTTEE OR TRIBE NAME

7. UNIT AGREEMENT NAME

PLAINS UNIT FEDERAL

8. FARM OR LEASE NAME

9. WELL NO.

10. FIELD AND POOL, OR WILDCAT

LUSK STRAWN

11. SEC., T., R., M., OR BLK. AND SURVEY OR AREA

27-19-32 NMPM

12. COUNTY OR PARISH

LEA N.M.

# SECTION 1. WORK RECORDS ON WELLS

(Do not use this form for a well which is deepened or changed to a different reservoir, or "abandoned" for other purposes.)

1. NAME OF OPERATOR

2. ADDRESS OF OPERATOR

3. LOCATION OF WELL (Report location clearly and in accordance with any State requirements. See also space 17 below.)

At surface

11. PERMIT NO.

15. ELEVATIONS (Show whether DF, RT, GR, etc.)

3607' R.T.D.B.

16. Check Appropriate Box To Indicate Nature of Notice, Report, or Other Data

NOTICE OF INTENTION TO:

TEST WATER SHUT-OFF

FRACURE TREAT

SHOOT OR ACIDIZE

REPAIR WELL

(Other)

PULL OR ALTER CASING

MISCELLANEOUS COMPLETE

ABANDON\*

CHANGE PLANS

SUBSEQUENT REPORT OF:

WATER SHUT-OFF

FRACURE TREATMENT

SHOOTING OR ACIDIZING

(Other)

REPAIRING WELL

ALTERING CASING

ABANDONMENT\*

(NOTE: Report results of multiple completion on Well Completion or Recompletion Report and Log form.)

17. DESCRIBE PROPOSED OR COMPLETED OPERATIONS (Clearly state all pertinent details, and give pertinent dates, including estimated date of starting any proposed work. If well is directionally drilled, give subsurface locations and measured and true vertical depths for all markers and zones pertinent to this work.)

WELL HAS BEEN SHUT IN AND TEMP. ABANDONED SINCE 10-3-64. All possible productive zones have been evaluated. Proceed to Plug & Abandon as follows:

Set BP @ 2024. 12500' (PERFS: 12670'-13010'). Dump 3oz Cement on Top.

Shoot & pull 5 1/2" from face point - TCMT-11500'. If pulled from above 10,000' contact USGS Hobbs for possible further advice.

Set 3524. In & Out of 5 1/2" stub. - 5024. @ 10592' (T-WOLF CAMP) Limit of 3 1/2" cut & pulled above 10,952' - 5024. across T-2" Bone Springs @ 9203 (limit of 5 1/2" cut above 9200) - 5024. across T-Bone Springs @ 7575; - 5024. in & out of 9 1/2" shoe @ 4532' - 3524 @ 2700-2600

B-SALT - 105X @ surface and erect P.A. marker.

Make final cleanup and restore ground to surface.

(All intervals filled w/ mud below this.)  
T.D. 13180, P.S.D. 13000, 15 1/2" CSA 512, 9 1/2" CSA 452, 5 1/2" CSA 13160. (11000 PERFS: 12670-13010).

I hereby certify that the foregoing is true and correct

SIGNED

TITLE AREA SUPERINTENDENT

DATE MAY 23 1970

(This space for Federal or State office use)

APPROVED BY

TITLE

DATE

REASON FOR APPROVAL, IF ANY:

64-10000-10000

APPROVED

MAY 25 1970

ARTHUR R. BROWN  
DISTRICT ENGINEER

\*See Instructions on reverse side



NUMBER OF COPIES RECEIVED	
DISTRIBUTION	
NYA FE	
FILE	
U.S.G.S.	
LAND OFFICE	
TRANSPORTER	OIL GAS
PRODUCTION OFFICE	
OPERATOR	

**NEW MEXICO OIL CONSERVATION COMMISSION**  
**WELL LOCATION AND ACREAGE DEDICATION PLAT**  
 SEE INSTRUCTIONS FOR COMPLETING THIS FORM ON THE REVERSE SIDE

FORM C-128  
Revised 5/1/57

10828 OF  
MAY 13 2 56 PM '64

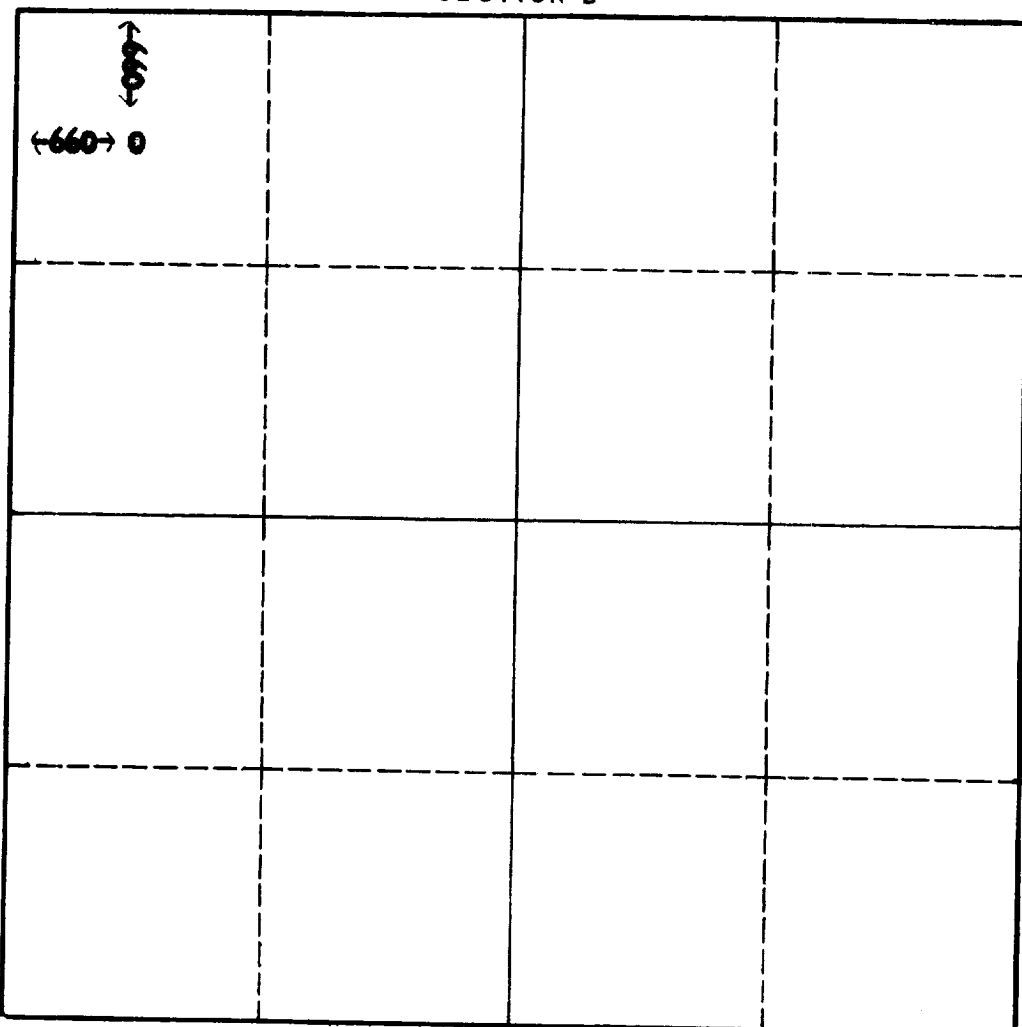
**SECTION A**

Operator <b>Pan American Petroleum Corporation</b>			Lease <b>Plains Unit</b>		Well No. <b>1</b>
Unit Letter <b>D</b>	Section <b>27</b>	Township <b>19-S</b>	Range <b>30-E</b>	County <b>Lea</b>	
Actual Footage Location of Well: <b>660</b> feet from the <b>North</b> line and <b>660</b> feet from the <b>West</b> line					
Ground Level Elev. <b>3607' MDS</b>	Producing Formation <b>Strawn</b>	Pool <b>Lusk-Strawn</b>		Dedicated Acreage: <b>160</b> Acres	

1. Is the Operator the only owner in the dedicated acreage outlined on the plat below? YES **I** NO \_\_\_\_ . ("Owner" means the person who has the right to drill into and to produce from any pool and to appropriate the production either for himself or for himself and another. (65-3-29 (e) NMSA 1935 Comp.)
2. If the answer to question one is "no," have the interests of all the owners been consolidated by communitization agreement or otherwise? YES \_\_\_\_ NO \_\_\_\_ . If answer is "yes," Type of Consolidation \_\_\_\_
3. If the answer to question two is "no," list all the owners and their respective interests below:

Owner	Land Description

**SECTION B**



**CERTIFICATION**

I hereby certify that the information in SECTION A above is true and complete to the best of my knowledge and belief.

Original Signed by:  
**Y. E. STALEY**

Position  
**Area Superintendent**

Company  
**Pan American Petroleum Corporation**

Date  
**May 13, 1964**

I hereby certify that the well location shown on the plat in SECTION B was plotted from field notes of actual surveys made by me or under my supervision, and that the same is true and correct to the best of my knowledge and belief.

Date Surveyed

Registered Professional Engineer and/or Land Surveyor

Certificate No.

0 330 660 990 1320 1650 1980 2310 2640 2000 1500 1000 500 0

## **INSTRUCTIONS FOR COMPLETION OF FORM C-128**

1. Operator shall furnish and certify to the information called for in Section A.
2. Operator shall outline the dedicated acreage for *both* oil and gas wells on the plat in Section B.
3. A registered professional engineer or land surveyor registered in the State of New Mexico or approved by the Commission shall show on the plat the location of the well and certify this information in the space provided.
4. All distances shown on the plat must be from the outer boundaries of the Section.
5. If additional space is needed for listing owners and their respective interests as required in question 3 of Section A, please use space below.

NUMBER OF COPIES RECEIVED	
DISTRIBUTION	
SANTA FE	
FILE	
U.S.G.S.	
LAND OFFICE	
TRANSPORTER	OIL
	GAS
PRODUCTION OFFICE	
OPERATOR	

NEW MEXICO OIL CONSERVATION COMMISSION  
SANTA FE, NEW MEXICO

FORM C-110

(Rev. 7-60)

**CERTIFICATE OF COMPLIANCE AND AUTHORIZATION  
TO TRANSPORT OIL AND NATURAL GAS**

FILE THE ORIGINAL AND 4 COPIES WITH THE APPROPRIATE OFFICE

Company or Operator <b>Pan American Petroleum Corporation</b>				Lease <b>Plains Unit</b>		Well No. <b>1</b>	
Unit Letter <b>D</b>	Section <b>27</b>	Township <b>19-S</b>	Range <b>32-E</b>	County <b>Lea</b>			
Pool <b>Lusk Strawn-Oil</b>				Kind of Lease (State, Fed, Fee) <b>Federal</b>			
If well produces oil or condensate give location of tanks		Unit Letter <b>D</b>	Section <b>27</b>	Township <b>19-S</b>	Range <b>32-E</b>		
Authorized transporter of oil <input checked="" type="checkbox"/> or condensate <input type="checkbox"/> <b>Indiana Oil Purchasing Co. (Trucks)</b>				Address (give address to which approved copy of this form is to be sent) <b>Box 1725 - Midland, Texas</b>			
Is Gas Actually Connected? Yes <input type="checkbox"/> No <input checked="" type="checkbox"/>							
Authorized transporter of casing head gas <input type="checkbox"/> or dry gas <input type="checkbox"/>		Date Connected	Address (give address to which approved copy of this form is to be sent)				
If gas is not being sold, give reasons and also explain its present disposition: <b>Vented and flared pending possible connection</b>							
<p align="center"><b>REASON(S) FOR FILING (please check proper box)</b></p> <p>New Well <input type="checkbox"/> Change in Ownership <input type="checkbox"/>  Change in Transporter (check one) Other (explain below)  Oil <input type="checkbox"/> Dry Gas <input type="checkbox"/>  Casing head gas <input type="checkbox"/> Condensate <input type="checkbox"/></p> <p align="center"><b>Undesignated well placed in pool</b> <b>NMOCC Order No. 2726</b></p>							
Remarks							
The undersigned certifies that the Rules and Regulations of the Oil Conservation Commission have been complied with.							
Executed this the <b>10</b> day of <b>July</b> , 19 <b>64</b>							
OIL CONSERVATION COMMISSION				By			
Approved by				Original Signed by: <b>V. E. STALEY</b>			
Title				Title <b>Area Superintendent</b>			
Date				Company <b>Pan American Petroleum Corporation</b>			
				Address <b>Box 68 - Hobbs, New Mexico - 88240</b>			

1. The first part of the document is a list of the names of the persons who have been appointed to the various offices of the Board of Directors of the Corporation. The names are as follows:

2. The second part of the document is a list of the names of the persons who have been appointed to the various offices of the Board of Directors of the Corporation. The names are as follows:

3. The third part of the document is a list of the names of the persons who have been appointed to the various offices of the Board of Directors of the Corporation. The names are as follows:

4. The fourth part of the document is a list of the names of the persons who have been appointed to the various offices of the Board of Directors of the Corporation. The names are as follows:

5. The fifth part of the document is a list of the names of the persons who have been appointed to the various offices of the Board of Directors of the Corporation. The names are as follows:

UNITED STATES  
DEPARTMENT OF THE INTERIOR  
GEOLOGICAL SURVEYSUBMIT IN TRIPLI  
(Other instructions  
verse side)E\*  
re-Form approved.  
Budget Bureau No. 42-R1424.

5. LEASE DESIGNATION AND SERIAL NO.

ME 03646-1

6. IF INDIAN, ALLOTTEE OR TRIBE NAME

7. UNIT AGREEMENT NAME

Plains Unit

8. FARM OR LEASE NAME

9. WELL NO.

1

10. FIELD AND POOL, OR WILDCAT

Lusk Strawn

11. SEC., T., R., M., OR BLK. AND  
SURVEY OR AREA

27-19-32 NEPM

12. COUNTY OR PARISH

Lea

13. STATE

New Mexico

## SUNDRY NOTICES AND REPORTS ON WELLS

(Do not use this form for proposals to drill or to deepen or plug back to a different reservoir.  
Use "APPLICATION FOR PERMIT" for such proposals.)

1.

OIL  
WELL ☒GAS  
WELL ☐OTHER ☐

2. NAME OF OPERATOR

Pan American Petroleum Corporation

3. ADDRESS OF OPERATOR

Box 68 - Hobbs, New Mexico - 88240

4. LOCATION OF WELL (Report location clearly and in accordance with any State requirements.\*  
See also space 17 below.)  
At surface

660' FWL X 660' FWL, Sec. 27, (Unit D, NW/4 NW/4)

14. PERMIT NO.

15. ELEVATIONS (Show whether DF, RT, GR, etc.)

3607' RM

16.

Check Appropriate Box To Indicate Nature of Notice, Report, or Other Data

NOTICE OF INTENTION TO:

TEST WATER SHUT-OFF

FRACTURE TREAT

SHOOT OR ACIDIZE

REPAIR WELL

(Other)

PULL OR ALTER CASING

MULTIPLE COMPLETE

ABANDON\*

CHANGE PLANS

SUBSEQUENT REPORT OF:

WATER SHUT-OFF

FRACTURE TREATMENT

SHOOTING OR ACIDIZING

(Other) Temporary abandonment

REPAIRING WELL

ALTERING CASING

ABANDONMENT\* ☒(NOTE: Report results of multiple completion on Well  
Completion or Recompletion Report and Log form.)17. DESCRIBE PROPOSED OR COMPLETED OPERATIONS (Clearly state all pertinent details, and give pertinent dates, including estimated date of starting any  
proposed work. If well is directionally drilled, give subsurface locations and measured and true vertical depths for all markers and zones perti-  
nent to this work.)\*

Strawn Zone ceased to produce after recompletion on 5-6-64. On 7/14/64, acidized with 15,000 gal. Unable to restore zone to production in swabbing and pumping operations. Abandoned Strawn Zone by squeezing perforations 11,596-613' with 300 ex Inferno plus .8% Haled-9 plus 1/2 lb ex Tufplug. Drilled out to 13,060' and on 8/2/64 acidized Morrow perforations 12,670 to 13,010' with 1000 gallons MEA. Reacidized twice with 2000 gallons MEA and 8000 gallons GRA respectively. Never able to restore to production. On 9-18-64, swab tested 45 BW x 0 BW in 6 hours.

Shut in and Temporarily Abandoned Morrow Zone on 10-3-64 pending further evaluation.

18. I hereby certify that the foregoing is true and correct

SIGNED

Original Signed by  
V. E. STALL

TITLE

Area Superintendent

DATE

10/7/74

(This space for Federal or State office use)

APPROVED BY

CONDITIONS OF APPROVAL, IF ANY:

TITLE

APPROVED

DATE

OCT 15 1964

\*See Instructions on Reverse Side  
GORDON  
ACTING DISTRICT ENGINEER

## Instructions

**General:** This form is designed for submitting proposals to perform certain well operations, and reports of such operations when completed, as indicated, on Federal and Indian lands pursuant to applicable Federal law and regulations, and, if approved or accepted by any State, on all lands in such State, pursuant to applicable State law and regulations. Any necessary special instructions concerning the use of this form and the number of copies to be submitted, particularly with regard to local, area, or regional procedures and practices, either are shown below or will be issued by, or may be obtained from, the local Federal and/or State office.

**Item 4:** If there are no applicable State requirements, locations on Federal or Indian land should be described in accordance with Federal requirements. Consult local State or Federal office for specific instructions.

**Item 17:** Proposals to abandon a well and subsequent reports of abandonment should include such special information as is required by local Federal and/or State offices. In addition, such proposals and reports should include reasons for the abandonment; data on any former or present productive zones, or other zones with present significant fluid contents not sealed off by cement or otherwise; depths (top and bottom) and method of placement of cement plugs; mud or other material placed below, between and above plugs; amount, size, method of parting of any casing, liner or tubing pulled and the depth to top of any left in the hole; method of closing top of well; and date well site conditioned for final inspection looking to approval of the abandonment.