

NO. OF COPIES RECEIVED		
DISTRIBUTION		
SANTA FE		
FILE		
U.S.G.S.		
LAND OFFICE		
OPERATOR		

NEW MEXICO OIL CONSERVATION COMMISSION

Form O-101  
Revised 1-1-65

5A. Indicate Type of Lease  
STATE  FEE

5. State Oil & Gas Lease No.  
**E-5014**

APPLICATION FOR PERMIT TO DRILL, DEEPEN, OR PLUG BACK

1a. Type of Work DRILL <input checked="" type="checkbox"/> DEEPEN <input type="checkbox"/> PLUG BACK <input type="checkbox"/>		7. Unit Agreement Name	
b. Type of Well OIL WELL <input checked="" type="checkbox"/> GAS WELL <input type="checkbox"/> OTHER <input type="checkbox"/>		8. Farm or Lease Name <b>Joannie</b>	
2. Name of Operator <b>J. Cecil Rhodes</b>		9. Well No. <b>3</b>	
3. Address of Operator <b>o/o Oil Reports &amp; Gas Services, Inc., Box 763, Hobbs, New Mexico</b>		10. Field and Pool, or Wildcat <b>EX Yates - SR - Queen</b>	
4. Location of Well UNIT LETTER <b>E</b> LOCATED <b>1650</b> FEET FROM THE <b>North</b> LINE <b>990</b> FEET FROM THE <b>West</b> LINE OF SEC. <b>8</b> TWP. <b>18S</b> RGE. <b>34E</b> NMPM		12. County <b>Lea</b>	
19. Proposed Depth <b>4500</b>		19A. Formation <b>Queen</b>	20. Rotary or C.T. <b>Rotary</b>
21. Elevations (Show whether DF, RT, etc.) <b>4068.3 GR</b>	21A. Kind & Status Plug. Bend <b>Blanket</b>	21B. Drilling Contractor <b>Leatherwood Drlg. Co.</b>	22. Approx. Date Work will start <b>Upon Approval</b>

23.

PROPOSED CASING AND CEMENT PROGRAM

SIZE OF HOLE	SIZE OF CASING	WEIGHT PER FOOT	SETTING DEPTH	SACKS OF CEMENT	EST. TOP
<b>11</b>	<b>8 5/8</b>	<b>24#</b>	<b>325</b>	<b>0100</b>	<b>0100</b>
<b>7 7/8</b>	<b>5 1/2</b>	<b>15.5#</b>	<b>4500</b>	<b>400</b>	<b>2200</b>

IN ABOVE SPACE DESCRIBE PROPOSED PROGRAM: IF PROPOSAL IS TO DEEPEN OR PLUG EACH, GIVE DATA ON PRESENT PRODUCTIVE ZONE AND PROPOSED NEW PRODUCTIVE ZONE. GIVE BLOWOUT PREVENTER PROGRAM, IF ANY.

I hereby certify that the information above is true and complete to the best of my knowledge and belief.

Signed *W. H. H. H.* Title Agent Date 4/2/74

(This space for State Use)

APPROVED BY *J. A. Clements* TITLE FOR DATE \_\_\_\_\_

CONDITIONS OF APPROVAL, IF ANY:

NEW MEXICO OIL CONSERVATION COMMISSION  
WELL LOCATION AND ACREAGE DEDICATION PL

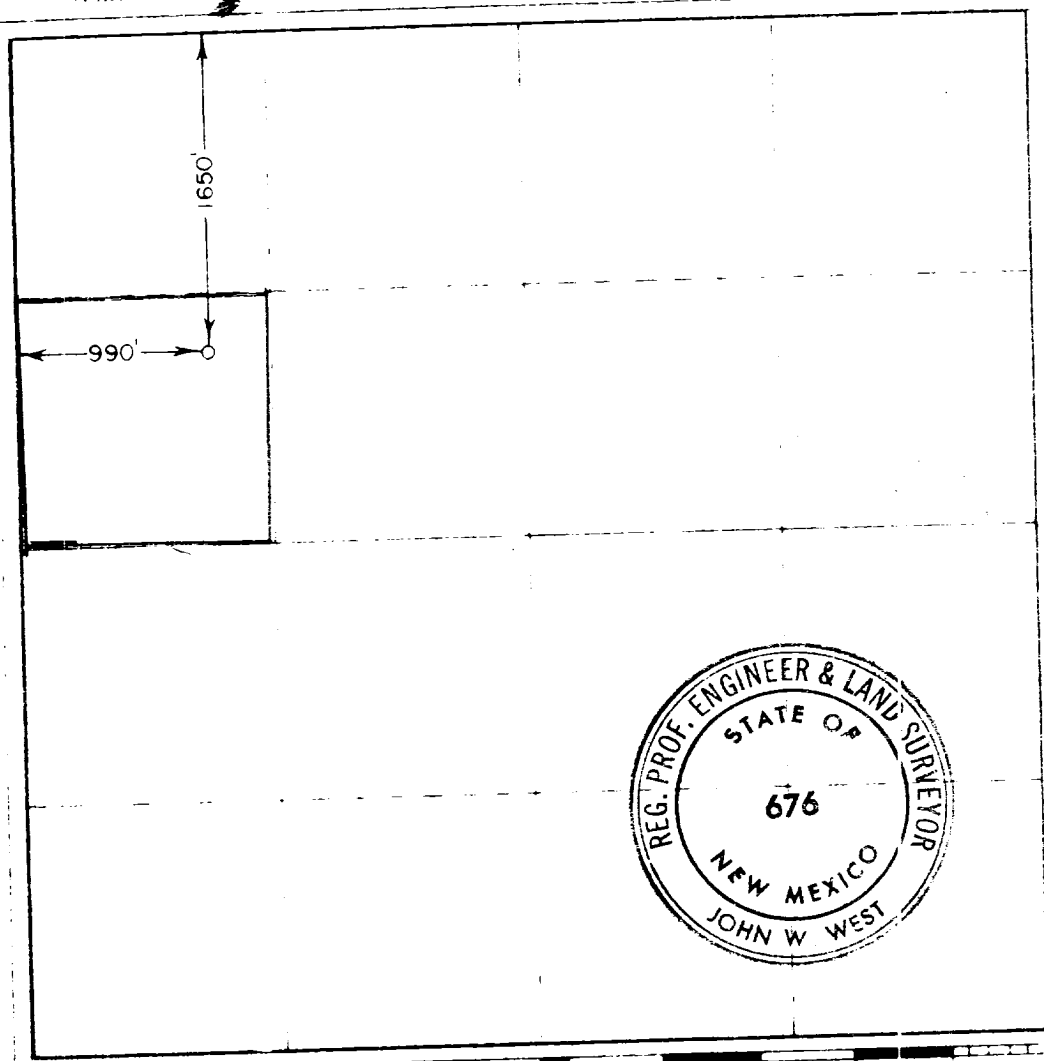
Form C-102  
Supersedes C-128  
Effective 1-1-65

All distances must be from the outer boundaries of the Section

Operator <b>J. CECIL RHODES</b>		Lease <b>JOANNIE</b>		Well No. <b>3</b>	
Grid Letter <b>E</b>	Section <b>8</b>	Township <b>18S</b>	Range <b>34E</b>	County <b>LEA</b>	
Actual Footage Location of Well: <b>990</b> feet from the <b>WEST</b> side and <b>1650</b> feet from the <b>NORTH</b> side		Producing Formation <b>Queen</b>		Dedicated Acreage: <b>40</b> Acres	
Ground Level Elev. <b>4068.3</b>		Floor <b>EK Yates-Seven Rivers Queen</b>			

1. Outline the acreage dedicated to the subject well by colored pencil or hachure marks on the plat below.
2. If more than one lease is dedicated to the well, outline each and identify the ownership thereof (both as to working interest and royalty)
3. If more than one lease of different ownership is dedicated to the well, have the interests of all owners been consolidated by communitization, unitization, force-pooling, etc?

Yes  No If answer is "yes," type of consolidation \_\_\_\_\_  
 If answer is "no," list the owners and tract descriptions which have actually been consolidated (Use reverse side of this form if necessary.) \_\_\_\_\_  
 No allowable will be assigned to the well until all interests have been consolidated (by communitization, unitization, forced-pooling, or otherwise) or until a non-standard unit, eliminating such interests, has been approved by the Commission.



CERTIFICATION

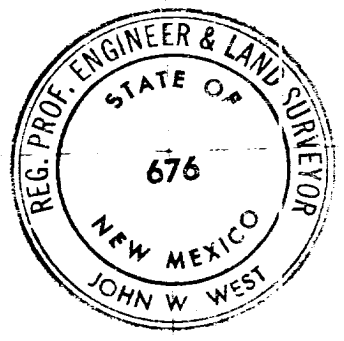
I hereby certify that the information contained herein is true and complete to the best of my knowledge and belief

*Walter H. Hatten*

Agent  
**J. Cecil Rhodes**

**4/2/74**

I hereby certify that the well location shown on this plat was plotted from field notes of original surveys made by me or under my supervision and that the same is true and correct to the best of my knowledge and belief



**APRIL 2, 1974**

Registered Professional Surveyor  
*John W. West*  
676

