

NEW MEXICO OIL CONSERVATION COMMISSION
WELL LOCATION AND ACREAGE DEDICATION PLAT

Form C-102
Supersedes C-128
Effective 1-1-65

All distances must be from the outer boundaries of the Section

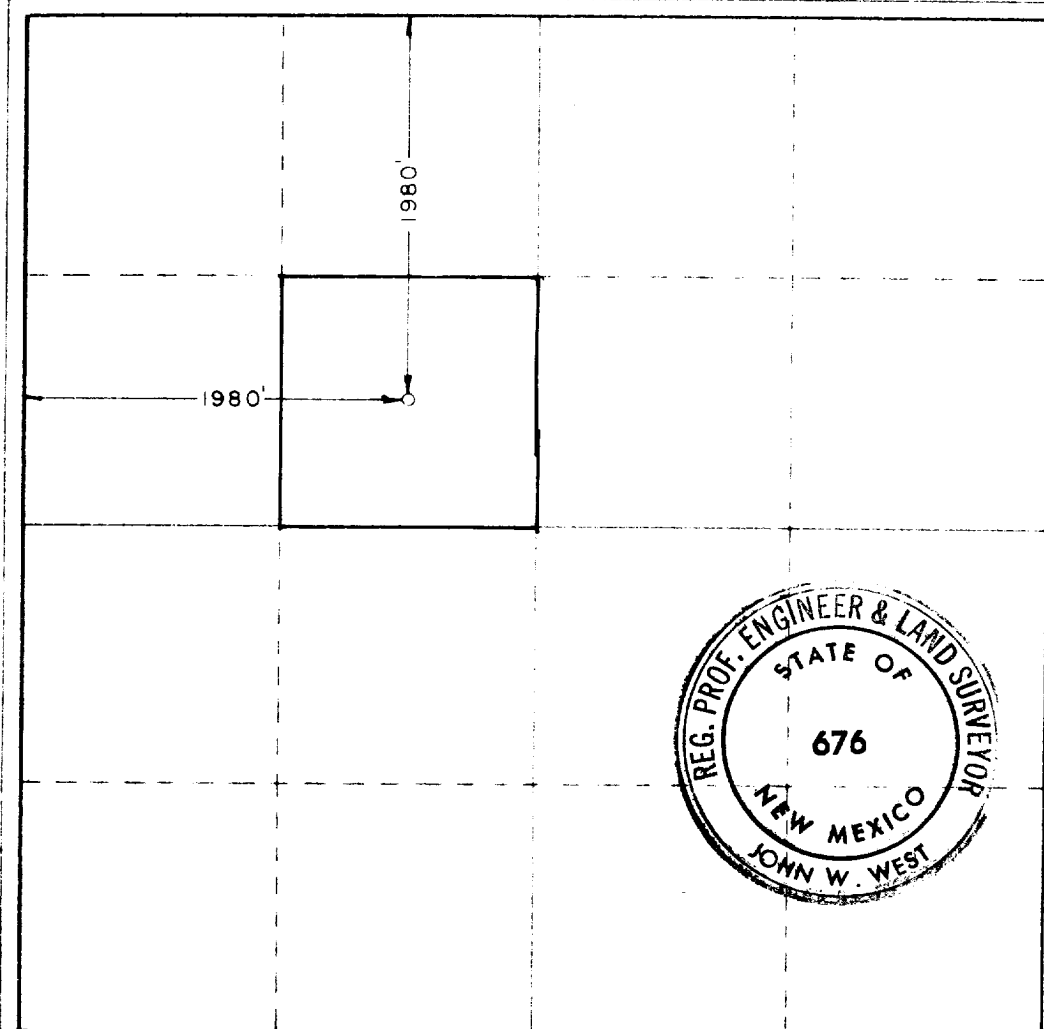
Operator Energy Reserves Group, Inc.			Lease Root & Stammers State		Well No. 1
Tract Letter F	Section 18	Township 18 South	Range 35 East	County Lea	
Actual Well Location of Well:					
1980	feet from the	North	line and	1980	feet from the
Ground Level Elev 3967.5	Producing Formation <i>Oil</i>	Flow		Dedicated Acreage 40	Acres

1. Outline the acreage dedicated to the subject well by colored pencil or hachure marks on the plat below.
2. If more than one lease is dedicated to the well, outline each and identify the ownership thereof (both as to working interest and royalty).
3. If more than one lease of different ownership is dedicated to the well, have the interests of all owners been consolidated by communitization, unitization, force-pooling, etc?

Yes No If answer is "yes" type of consolidation _____

If answer is "no," list the owners and tract descriptions which have actually been consolidated (Use reverse side of this form if necessary.) _____

No allowable will be assigned to the well until all interests have been consolidated (by communitization, unitization, forced-pooling, or otherwise) or until a non-standard unit, eliminating such interests, has been approved by the Commission.



CERTIFICATION

I hereby certify that the information contained herein is true and complete to the best of my knowledge and belief.

RL Robert
Name

Production Engineer

Position

Energy Reserves Group, Inc.

Company

July 28, 1978

Date

I hereby certify that the well location shown on this plat was plotted from field notes of actual surveys made by me or under my supervision, and that the same is true and correct to the best of my knowledge and belief.

Date Surveyed

June 20, 1978

Registered Professional Engineer and/or Land Surveyor

John W. West
Certificate No.

John W. West 676

Ronald J. Eidson 3239

0 130 560 90 1320 1680 1980 2310 2640 2000 1500 1000 500 0

RECEIVED

JUL 1 1978

REGISTRATION COMM.
BOSTON, MA