

District I  
PO Box 1980, Hobbs, NM 88241-1980  
District II  
811 S. 1st Street, Artesia, NM 88210-2834  
District III  
1000 Rio Brazos Rd., Aztec, NM 87410  
District IV  
2040 South Pacheco, Santa Fe, NM 87505

State of New Mexico  
Energy, Minerals & Natural Resources Department

OIL CONSERVATION DIVISION  
2040 South Pacheco  
Santa Fe, NM 87505

Form C-101  
Revised October 18, 1994  
Instructions on back  
Submit to Appropriate District Office  
State Lease - 6 Copies  
Fee Lease - 5 Copies

☐ AMENDED REPORT

APPLICATION FOR PERMIT TO DRILL, RE-ENTER, DEEPEN, PLUGBACK, OR ADD A ZONE

<sup>1</sup> Operator name and Address ARCO PERMIAN P.O. BOX 1610		<sup>2</sup> OGRID Number 000990
		<sup>3</sup> API Number 30-025-34863
<sup>4</sup> Property Code 23938	<sup>5</sup> Property Name CORBIN STATE	<sup>6</sup> Well No. 2

<sup>7</sup> Surface Location									
UL or lot no.	Section	Township	Range	Lot. Idn	Feet from the	North/South Line	Feet from the	East/West line	County
E	24	18S	33E		1980	NORTH	660	WEST	LEA

<sup>8</sup> Proposed Bottom Hole Location If Different From Surface									
UL or lot no.	Section	Township	Range	Lot. Idn	Feet from the	North/South Line	Feet from the	East/West line	County
<sup>9</sup> Proposed Pool 1 E K DELAWARE (DELAWARE)					<sup>10</sup> Proposed Pool 2				

<sup>11</sup> Work Type Code N	<sup>12</sup> Well Type Code O	<sup>13</sup> Cable/Rotary R	<sup>14</sup> Lease Type Code S	<sup>15</sup> Ground Level Elevation 3902
<sup>16</sup> Multiple NO	<sup>17</sup> Proposed Depth 5600'	<sup>18</sup> Formation DELAWARE	<sup>19</sup> Contractor CAPSTAR	<sup>20</sup> Spud Date 2/00

<sup>21</sup> Proposed Casing and Cement Program					
Hole Size	Casing Size	Casing weight/foot	Setting Depth	Sacks of Cement	Estimated TOC
11	8-5/8	24	400	260	CIRC.
7-7/8	5-1/2	15.5	5600'	800	CIRC.

<sup>22</sup> Describe the proposed program. If this application is to DEEPEN or PLUG BACK give the data on the present productive zone and proposed new productive zone. Describe the blowout prevention program, if any. Use additional sheets if necessary

Subject well planned as a 5600' straight hole.  
3000 psi BOPE will be used from 400' to TD.

Permit Expires 1 Year From Approval  
Date Unless Drilling Underway

<sup>23</sup> I hereby certify that the information given above is true and complete to the best of my knowledge and belief.

Signature: *Laurie Cherry*  
Printed name: Laurie Cherry

Title: 1/13/00

OIL CONSERVATION DIVISION

Approved by:

ORIGINAL SIGNED BY CHRIS WILLIAM  
DISTRICT I SUPERVISOR

Title:

Approval Date:

JAN 21 2000

Expiration Date:

*JP*

## DISTRICT I

P.O. Box 1988, Hobbs, NM 88241-1988

## DISTRICT II

P.O. Drawer DD, Artesia, NM 88211-0719

## DISTRICT III

1000 Rio Brazos Rd., Aztec, NM 87410

## DISTRICT IV

P.O. BOX 2088, SANTA FE, N.M. 87504-2088

## State of New Mexico

Energy, Minerals and Natural Resources Department

Form C-102

Revised February 10, 1994

Submit to Appropriate District Office

State Lease - 4 Copies

Fee Lease - 3 Copies

## OIL CONSERVATION DIVISION

P.O. Box 2088

Santa Fe, New Mexico 87504-2088

☐ AMENDED REPORT

## WELL LOCATION AND ACREAGE DEDICATION PLAT

API Number 30-025-34863	Pool Code 21655	Pool Name E K DELAWARE (DELAWARE)
Property Code 23939	Property Name CORBIN STATE	Well Number 2
OGRID No. 000990	Operator Name ARCO PERMIAN	Elevation 3888

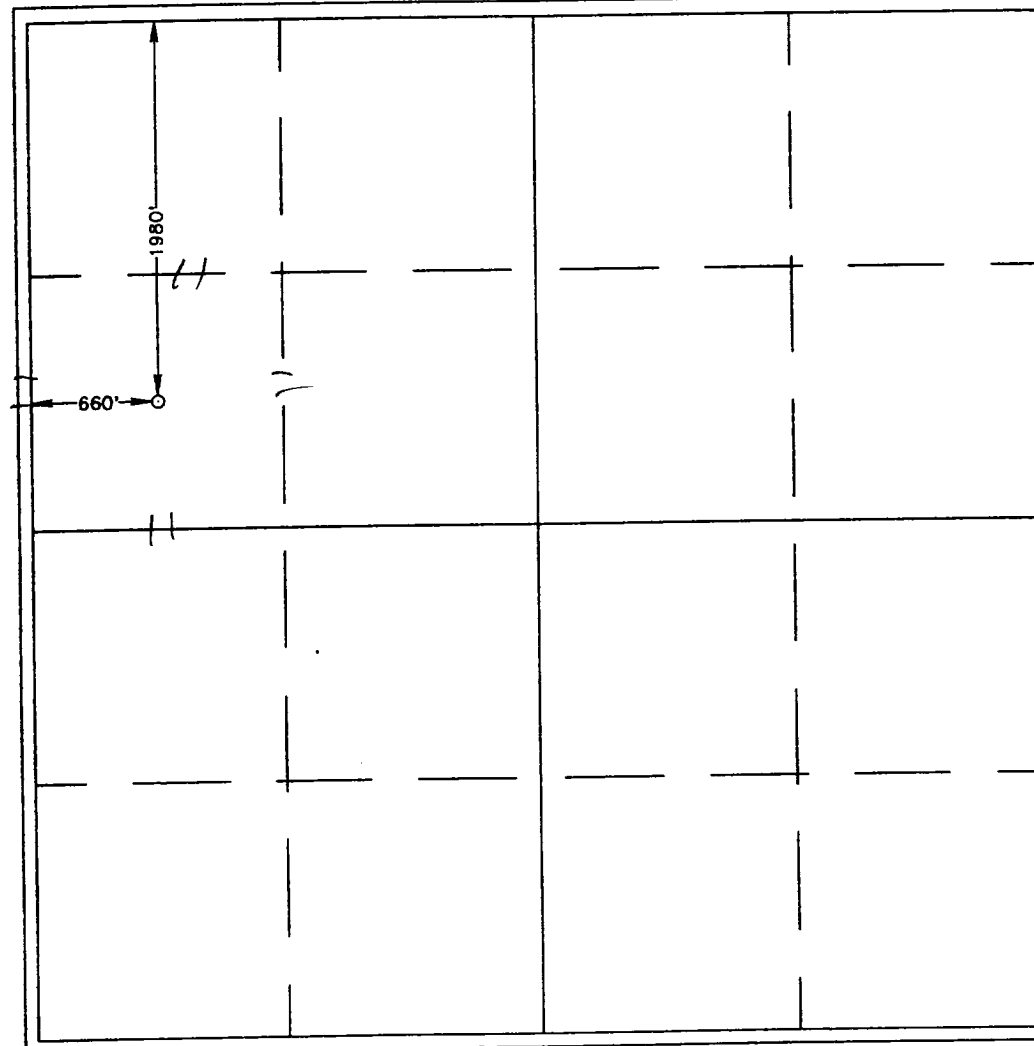
## Surface Location

UL or lot No.	Section	Township	Range	Lot Idn	Feet from the	North/South line	Feet from the	East/West line	County
E	24	18 S	33 E		1980	NORTH	660	WEST	LEA

## Bottom Hole Location If Different From Surface

UL or lot No.	Section	Township	Range	Lot Idn	Feet from the	North/South line	Feet from the	East/West line	County
Dedicated Acres 40	Joint or Infill	Consolidation Code	Order No.						

NO ALLOWABLE WILL BE ASSIGNED TO THIS COMPLETION UNTIL ALL INTERESTS HAVE BEEN CONSOLIDATED  
OR A NON-STANDARD UNIT HAS BEEN APPROVED BY THE DIVISION



## OPERATOR CERTIFICATION

I hereby certify the the information  
contained herein is true and complete to the  
best of my knowledge and belief.

*Laurie Cherry*  
Signature

LAURIE CHERRY  
Printed Name

REG/COMP. ASST.  
Title

1/13/00  
Date

## SURVEYOR CERTIFICATION

I hereby certify that the well location shown  
on this plat was plotted from field notes of  
actual surveys made by me or under my  
supervision, and that the same is true and  
correct to the best of my belief.

NOVEMBER 25, 1998

Date Surveyed \_\_\_\_\_ DMCC

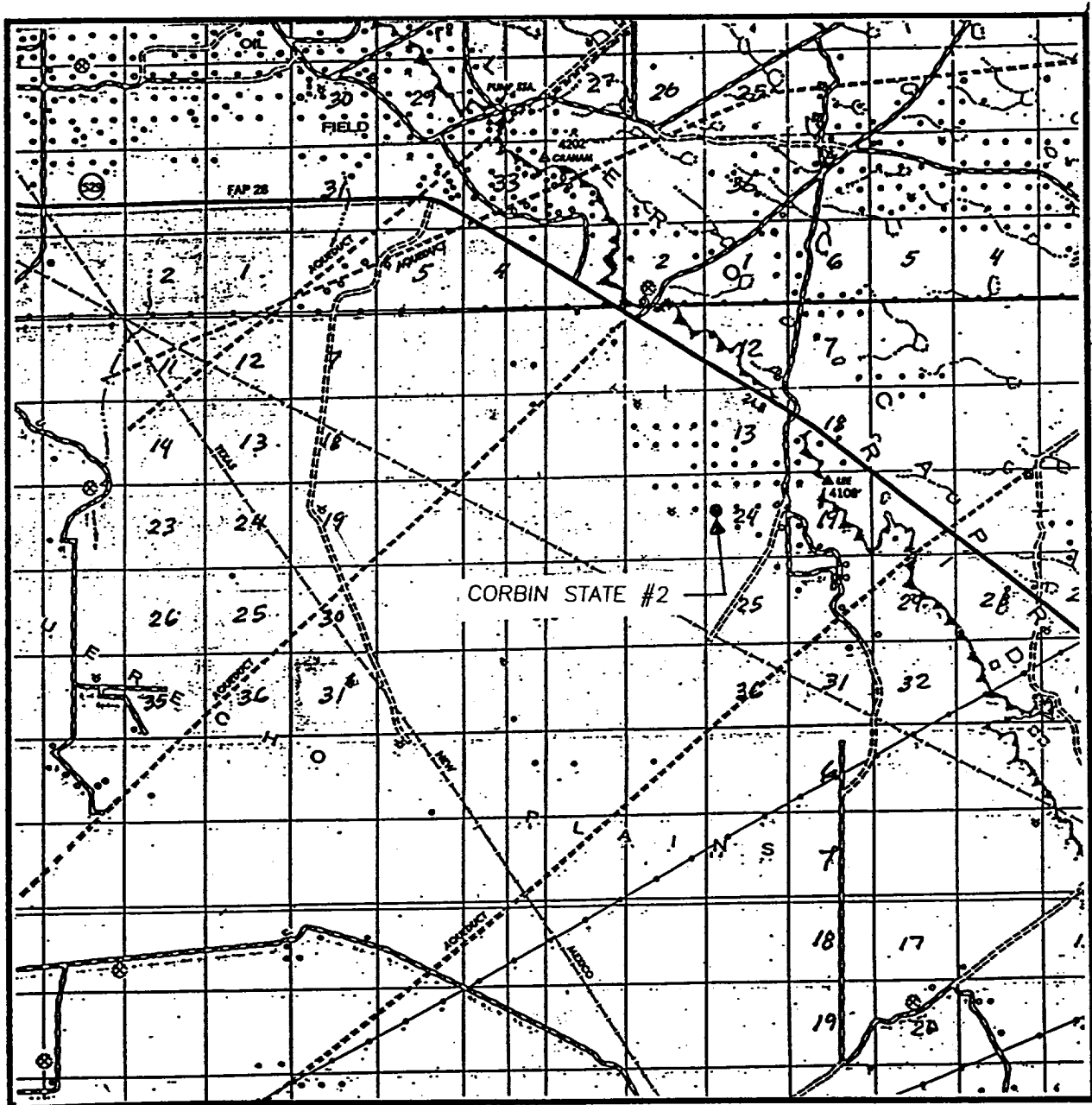
Signature of State of  
Professional Surveyor

*Ronald S. Edson*  
NEW MEXICO  
12-02-98  
98-11-1321

Certificate No. RONALD S. EDSON 3239  
GARY EDSON 12641  
MICHAEL McDONALD 12185



# VICINITY MAP



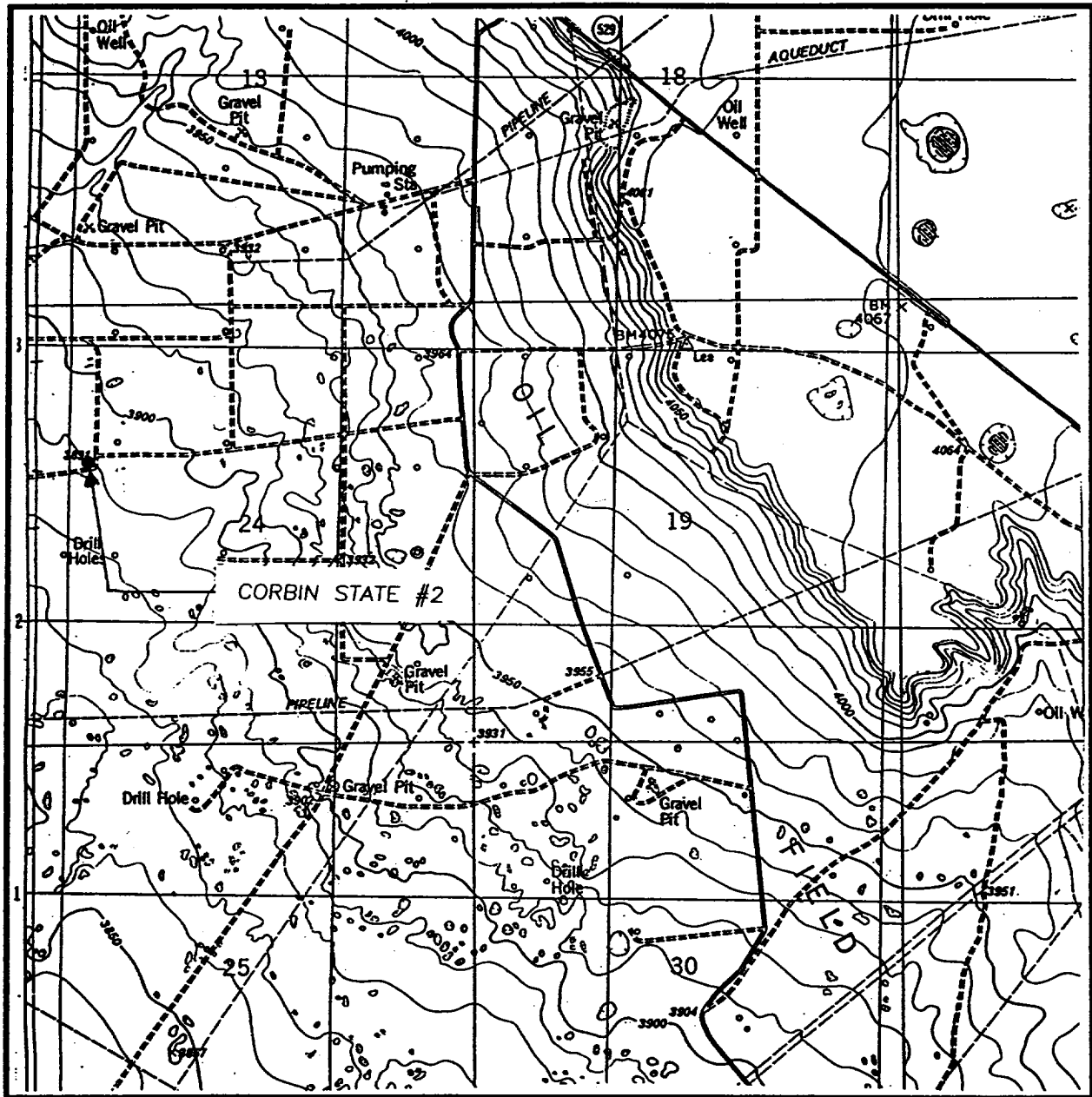
SCALE: 1" = 2 MILES

SEC. 24 TWP. 18-S RGE. 33-E  
 SURVEY N.M.P.M.  
 COUNTY LEA  
 DESCRIPTION 1980' FNL & 660' FWL  
 ELEVATION 3888  
 OPERATOR ARCO PERMIAN  
 LEASE CORBIN STATE

**JOHN WEST ENGINEERING**  
**HOBBS, NEW MEXICO**  
**(505) 393-3117**



# LOCATION VERIFICATION MAP



SCALE: 1" = 2000'

CONTOUR INTERVAL:  
IRONHOUSE WELL - 10'

SEC. 24 TWP. 18-S RGE. 33-E

SURVEY N.M.P.M.

COUNTY LEA

DESCRIPTION 1980' FNL & 660' FWL

ELEVATION 3888

OPERATOR ARCO PERMIAN

LEASE CORBIN STATE

U.S.G.S. TOPOGRAPHIC MAP  
IRONHOUSE WELL, N.M.

**JOHN WEST ENGINEERING**  
**HOBBS, NEW MEXICO**  
**(505) 393-3117**