

DISTRICT I
P.O. Box 1960, Hobbs, NM 88241-1960

DISTRICT II
P.O. Drawer 20, Artesia, NM 88211-0719

DISTRICT III
1000 Rio Brazos Rd., Artec, NM 87410

DISTRICT IV
P.O. BOX 2088, SANTA FE, N.M. 87504-2088

State of New Mexico

Energy, Minerals and Natural Resources Department

Form C-102
Revised February 10, 1994
Submit to Appropriate District Office
State Lease - 4 Copies
Fee Lease - 3 Copies

OIL CONSERVATION DIVISION

P.O. Box 2088
Santa Fe, New Mexico 87504-2088

WELL LOCATION AND ACREAGE DEDICATION PLAT

AMENDED REPORT

| | | |
|-----------------------------------|--|---|
| API Number 30-025-35661 | Pool Code 80830 | Pool Name LUSK; Wildcat Morrow (Gas) NW |
| Property Code 26118 | Property Name HAWKEYE "7" FEDERAL | Well Number 2 |
| OGRID No. 013645 | Operator Name LYNX PETROLEUM CONSULTANTS, INC. | Elevation 3620' |

Surface Location

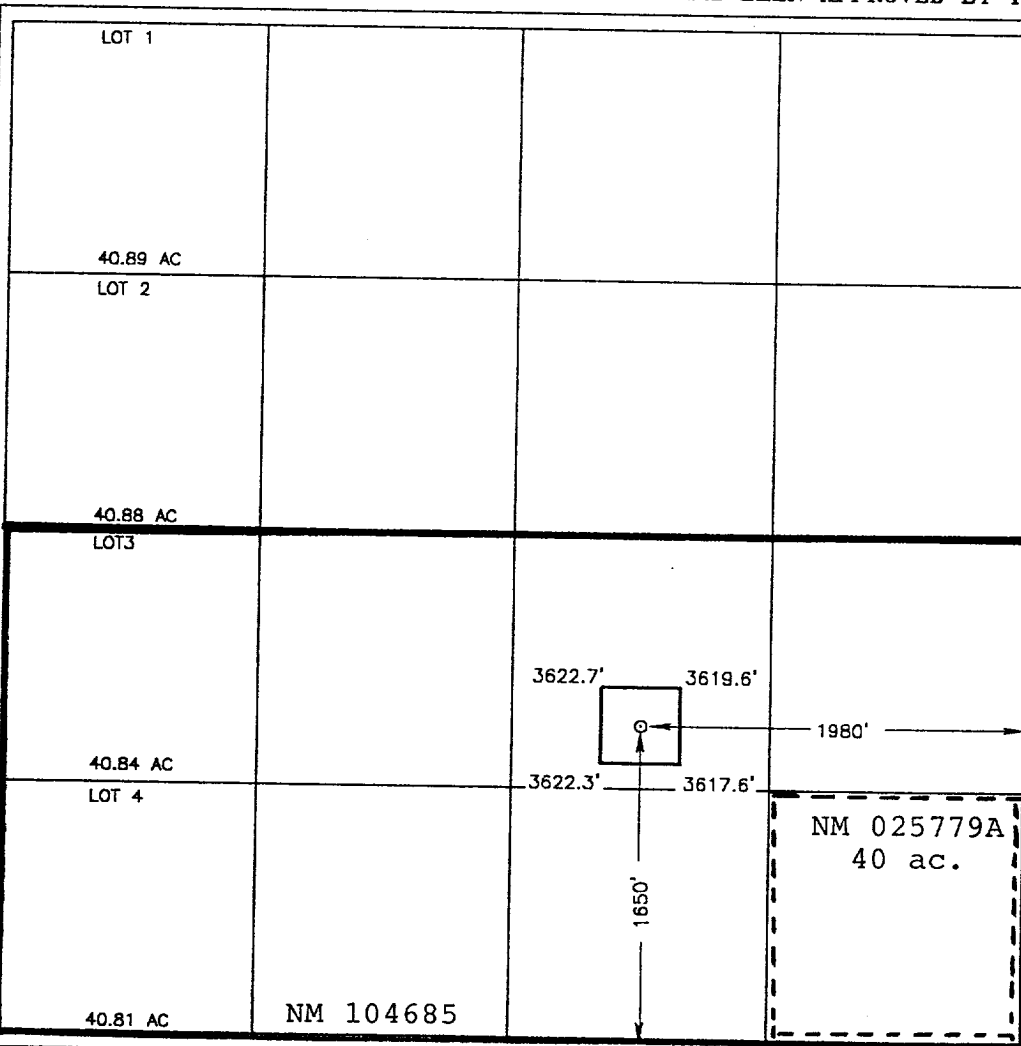
| UL or lot No. | Section | Township | Range | Lot Idn | Feet from the | North/South line | Feet from the | East/West line | County |
|---------------|---------|----------|-------|---------|---------------|------------------|---------------|----------------|--------|
| J | 7 | 19-S | 32-E | | 1650 | SOUTH | 1980 | EAST | LEA |

Bottom Hole Location If Different From Surface

| UL or lot No. | Section | Township | Range | Lot Idn | Feet from the | North/South line | Feet from the | East/West line | County |
|---------------|---------|----------|-------|---------|---------------|------------------|---------------|----------------|--------|
| | | | | | | | | | |

| | | | |
|-----------------------------------|-----------------------------|--------------------|-----------|
| Dedicated Acres 321.65 | Joint or Infill N | Consolidation Code | Order No. |
| Communitization Agreement Pending | | | |

NO ALLOWABLE WILL BE ASSIGNED TO THIS COMPLETION UNTIL ALL INTERESTS HAVE BEEN CONSOLIDATED OR A NON-STANDARD UNIT HAS BEEN APPROVED BY THE DIVISION



OPERATOR CERTIFICATION

I hereby certify the the information contained herein is true and complete to the best of my knowledge and belief.

Marc Wise
Signature

Marc Wise
Printed Name

President
Title

3/9/01
Date

SURVEYOR CERTIFICATION

I hereby certify that the well location shown on this plat was plotted from field notes of actual surveys made by me or under my supervision and that the same is true and correct to the best of my belief.

FEBRUARY 13, 2001

Date Surveyed AWB

Signature & Seal of Professional Surveyor

Ronald J. Eidson 02/14/01
01-11-0216

Certificate No. RONALD J. EIDSON 3239
GARY EIDSON 12641