

UNITED STATES  
DEPARTMENT OF THE INTERIOR  
GEOLOGICAL SURVEY

## APPLICATION FOR PERMIT TO DRILL, DEEPEN, OR PLUG BACK

## 1a. TYPE OF WORK

DRILL ☒DEEPEN ☐PLUG BACK ☐

## b. TYPE OF WELL

OIL  
WELL ☒GAS  
WELL ☐

OTHER

SINGLE  
ZONE ☐MULTIPLE  
ZONE ☐

## 2. NAME OF OPERATOR

Pennzoil United, Inc.

## 3. ADDRESS OF OPERATOR

P. O. Drawer 1828 - Midland, Texas 79701

## 4. LOCATION OF WELL (Report location clearly and in accordance with any State requirements.)\*

At surface

2086 FNL &amp; 554 FEL of Sec. 35, T-19-S, R-34-E

At proposed prod. zone

Same

## 14. DISTANCE IN MILES AND DIRECTION FROM NEAREST TOWN OR POST OFFICE\*

25 mi SW/Hobbs

## 15. DISTANCE FROM PROPOSED\*

LOCATION TO NEAREST  
PROPERTY OR LEASE LINE, FT.  
(Also to nearest drlg. unit line, if any) 554

## 16. NO. OF ACRES IN LEASE

640

17. NO. OF ACRES ASSIGNED  
TO THIS WELL

80

18. DISTANCE FROM PROPOSED LOCATION\*  
TO NEAREST WELL, DRILLING, COMPLETED,  
OR APPLIED FOR, ON THIS LEASE, FT.

1,600

## 19. PROPOSED DEPTH

10,800

## 20. ROTARY OR CABLE TOOLS

Rotary

## 21. ELEVATIONS (Show whether DF, RT, GR, etc.)

3714' G.L.

## 22. APPROX. DATE WORK WILL START\*

On approval

## 23.

## PROPOSED CASING AND CEMENTING PROGRAM

SIZE OF HOLE	SIZE OF CASING	WEIGHT PER FOOT	SETTING DEPTH	QUANTITY OF CEMENT
15"	11 3/4"	42#	350	300 sx - Circulate
11"	8 5/8"	24# & 32#	4,100	800 sx - Est. T/Cmt. 2,500'
7 7/8"	4 1/2"	11.5# & 13.5#	10,800	500 sx - Est. T/Cmt. 7,500*

\* A D.V. tool will be run at the base of the Queen section and the pipe will be cemented back to the base of the intermediate casing.

Blowout preventers will be installed on all casing strings below the surface.

IN ABOVE SPACE DESCRIBE PROPOSED PROGRAM: If proposal is to deepen or plug back, give data on present productive zone and proposed new productive zone. If proposal is to drill or deepen directionally, give pertinent data on subsurface locations and measured and true vertical depths. Give blowout preventer program, if any.

24.

SIGNED



TITLE

Drilling Superintendent

DATE

11-3-70

(This space for Federal or State office use)

PERMIT NO.

APPROVAL DATE

**APPROVED**

APPROVED BY

TITLE

NOV 4 1970  
ARTHUR R. BROWN  
DISTRICT

DATE

CONDITIONS OF APPROVAL, IF ANY:

RECEIVED

1 1970

OIL CONSERVATION COMM.  
HOUSES, N. L.

NEW MEXICO OIL CONSERVATION COMMISSION  
WELL LOCATION AND ACREAGE DEDICATION PLAT

Form C-102  
Supersedes C-128  
Effective 1-1-65

All distances must be from the outer boundaries of the Section.

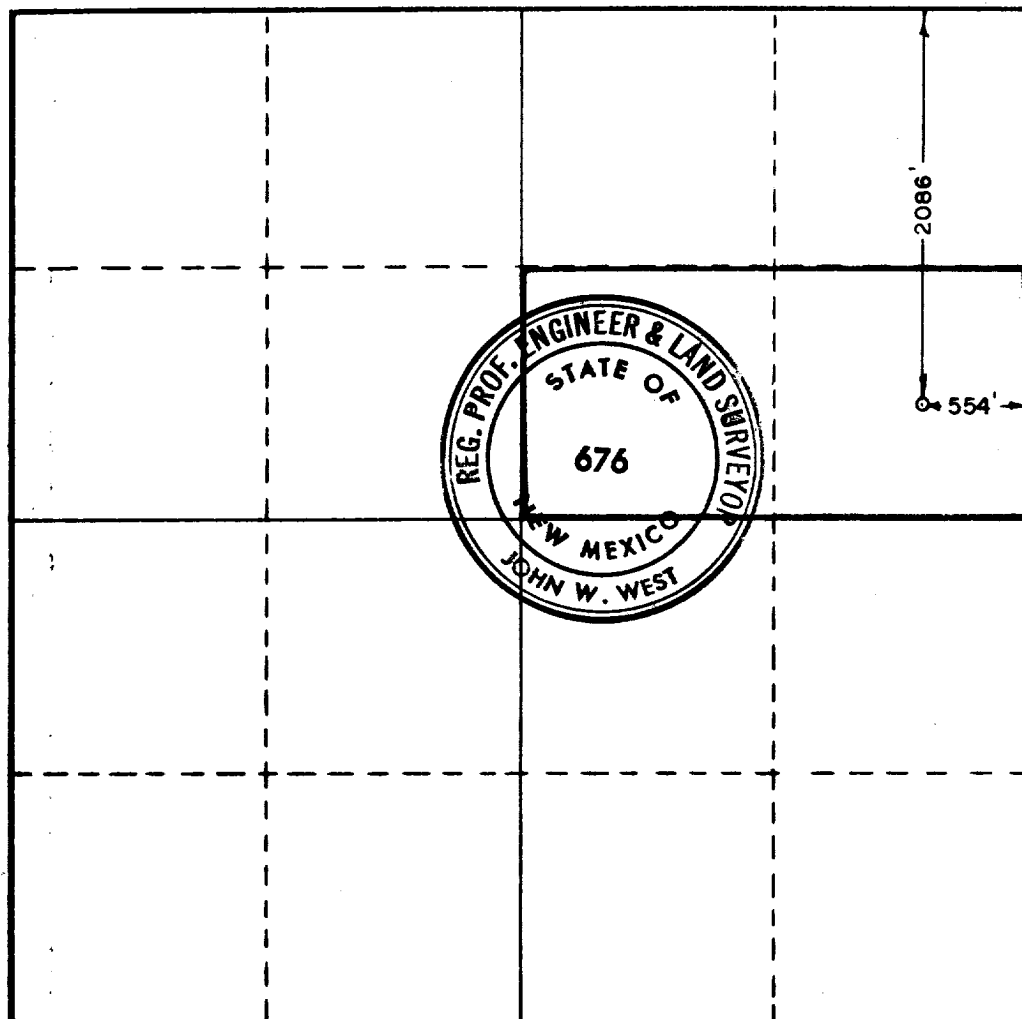
Operator <b>PENNZOIL UNITED, INC.</b>			Lease <b>MESCALERO RIDGE UNIT</b>		Well No. <b>4</b>
Unit Letter <b>H</b>	Section <b>35</b>	Township <b>19 SOUTH</b>	Range <b>34 EAST</b>	County <b>LEA</b>	
Actual Footage Location of Well: <b>2086</b> feet from the <b>NORTH</b> line and <b>554</b> feet from the <b>EAST</b> line					
Ground Level Elev. <b>3714</b>	Producing Formation <b>Bone Spring</b>		Pool <b>Undesignated</b>		Dedicated Acreage: <b>S/2 NE/4 80</b> Acres

1. Outline the acreage dedicated to the subject well by colored pencil or hachure marks on the plat below.
2. If more than one lease is dedicated to the well, outline each and identify the ownership thereof (both as to working interest and royalty).
3. If more than one lease of different ownership is dedicated to the well, have the interests of all owners been consolidated by communitization, unitization, force-pooling, etc?

☐ Yes ☐ No If answer is "yes," type of consolidation \_\_\_\_\_

If answer is "no," list the owners and tract descriptions which have actually been consolidated. (Use reverse side of this form if necessary.) \_\_\_\_\_

No allowable will be assigned to the well until all interests have been consolidated (by communitization, unitization, forced-pooling, or otherwise) or until a non-standard unit, eliminating such interests, has been approved by the Commission.



CERTIFICATION

I hereby certify that the information contained herein is true and complete to the best of my knowledge and belief.

Name *John W. West*  
Position Drilling Superintendent  
Company Pennzoil United, Inc.  
Date 11-3-70

I hereby certify that the well location shown on this plat was plotted from field notes of actual surveys made by me or under my supervision, and that the same is true and correct to the best of my knowledge and belief.

Date Surveyed  
**OCTOBER 31, 1970**

Registered Professional Engineer  
and/or Land Surveyor

*John W. West*  
Certificate No. **676**

0 320 640 960 1280 1600 1920 2240 2560 2880 3200 3520 3840 4160 4480 4800 5120 5440 5760 6080 6400

RECEIVED

1 1970

OIL CONSERVATION COMM.  
HO2BS N. M.