

NEW MEXICO OIL CONSERVATION COMMISSION
SOUTHEAST NEW MEXICO PACKER LEAKAGE TEST

| | | | | | | | |
|----------------------------------|------------------|-----------|---------------------------|-------------------------------|---------------------------|------------|---------------|
| Operator Marathon Oil Company | | | | Lease Lea Unit | | | Well No. 1 |
| Location of Well | Unit L | Sec 12 | Twp 20S | Range 34E | County Lea | | |
| Name of Reservoir or Pool | | | Type of Prod (Oil or Gas) | Method of Prod Flow, Art Lift | Prod. Medium (Tbg or Csg) | Choke Size | |
| Upper Compl | Lea Bone Springs | | Oil | Flow | Tubing | 1/2 | |
| Lower Compl | Lea Devonian | | Oil | Flow | Tubing | 18/64 | |

FLOW TEST NO. 1

Both zones shut-in at (hour, date): 11:55 AM 1-20-64

Well opened at (hour, date): 11:30 AM 1-21-64

| | | |
|--|------------------|------------------|
| | Upper Completion | Lower Completion |
| Indicate by (X) the zone producing..... | | X |
| Pressure at beginning of test..... | 450 | 650 |
| Stabilized? (Yes or No)..... | Yes | Yes |
| Maximum pressure during test..... | 455 | 650 |
| Minimum pressure during test..... | 450 | 15 |
| Pressure at conclusion of test..... | 455 | 140 |
| Pressure change during test (Maximum minus Minimum)..... | 5 | 635 |
| Was pressure change an increase or a decrease?..... | Increase | Decrease |

Well closed at (hour, date): 9:30 AM 1-22-64 Total Time On Production 22 Hours

Oil Production During Test: 164 bbls; Grav. 58.2; Gas Production During Test: 36.18 MCF; GOR 221

Remarks _____

FLOW TEST NO. 2

Well opened at (hour, date): 7:20 P.M. 1-22-64

| | | |
|--|------------------|------------------|
| | Upper Completion | Lower Completion |
| Indicate by (X) the zone producing..... | X | |
| Pressure at beginning of test..... | 460 | 660 |
| Stabilized? (Yes or No)..... | Yes | Yes |
| Maximum pressure during test..... | 500 | 660 |
| Minimum pressure during test..... | 50 | 650 |
| Pressure at conclusion of test..... | 220 | 660 |
| Pressure change during test (Maximum minus Minimum)..... | 450 | 10 |
| Was pressure change an increase or a decrease?..... | Decrease | Decrease |

Well closed at (hour, date): 1:05 PM 1-23-64 Total time on Production 17 3/4 Hours

Oil Production During Test: 110 bbls; Grav. 43.1; Gas Production During Test: 253.4 MCF; GOR 2295

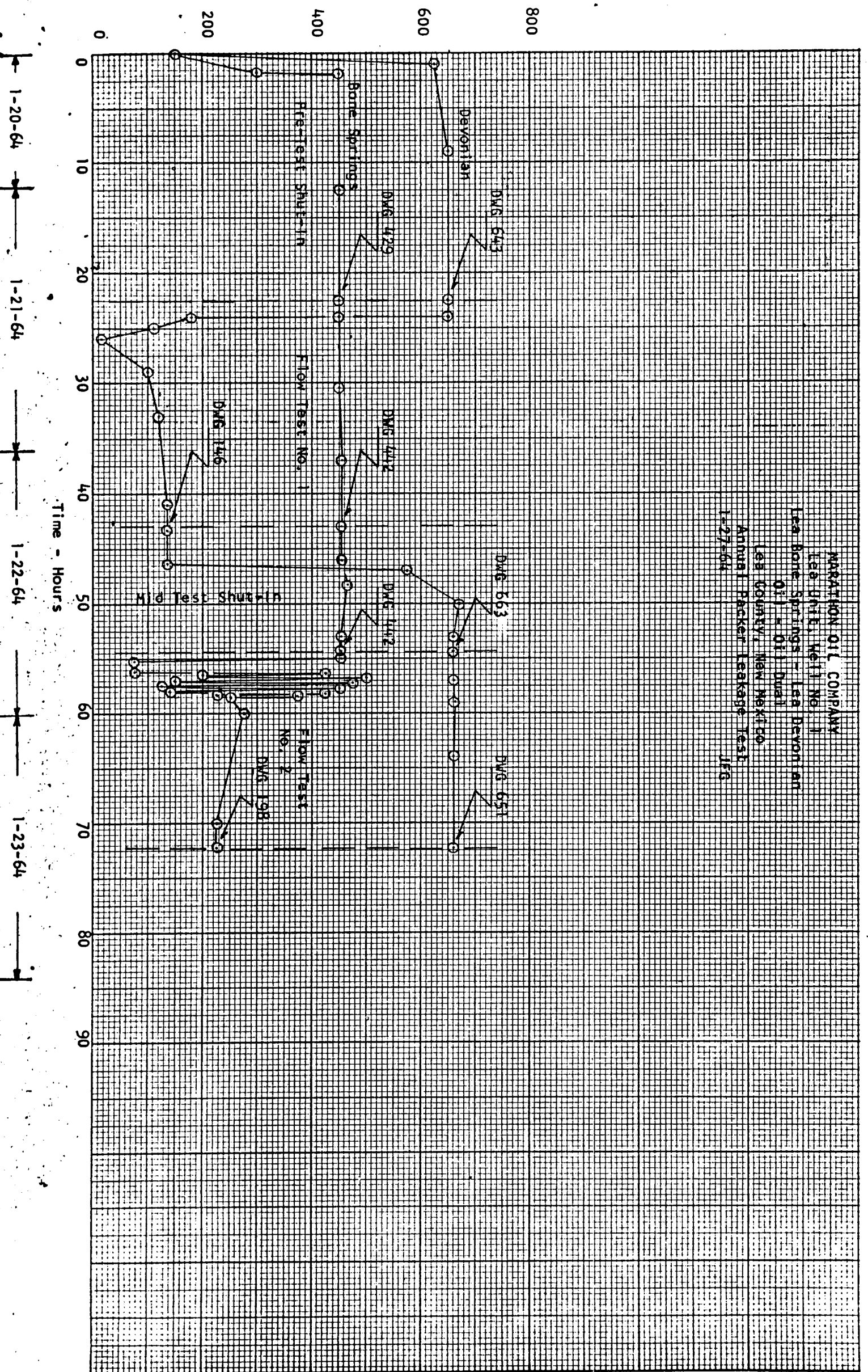
Remarks The results of this test indicate there is no communication between the subject zones.

I hereby certify that the information herein contained is true and complete to the best of my knowledge.

Approved _____ 19 _____
New Mexico Oil Conservation Commission

Operator Marathon Oil Company
By Jerry J. Genger
Title Assoc. Petr. Engr.
Date 1-27-64

PRESSURE - PSIG



1-20-64

1-21-64

1-22-64

1-23-64

Time - Hours