

SOUTHEAST NEW MEXICO PACKER LEAKAGE TEST

Operator The Ohio Oil Company			Lease Lea Unit			Well No. 1	
Location of Well	Unit L	Sec 12	Twp 20S	Rge 10	County Lea		
	Name of Reservoir or Pool		Type of Prod (Oil or Gas)	Method of Prod Flow, Art Lift	Prod. Medium (Tbg or Csg)	Choke Size	
Upper Compl	Bone Springs (Undesignated)		Oil	Flow	Tubing	1/4"	
Lower Compl	Lea Devonian		Oil	Flow	Tubing	7/64"	

FLOW TEST NO. 1

Both zones shut-in at (hour, date): 11:30 A.M. 10-12-60

Well opened at (hour, date): 11:30 A.M. 10-13-60

	Upper Completion	Lower Completion
Indicate by (X) the zone producing.....		<u>X</u>
Pressure at beginning of test.....	<u>1555</u>	<u>1575</u>
Stabilized? (Yes or No).....	<u>Yes</u>	<u>Yes</u>
Maximum pressure during test.....	<u>1565</u>	<u>1575</u>
Minimum pressure during test.....	<u>1555</u>	<u>1305</u>
Pressure at conclusion of test.....	<u>1565</u>	<u>1305</u>
Pressure change during test (Maximum minus Minimum).....	<u>10</u>	<u>270</u>
Was pressure change an increase or a decrease?.....	<u>Incr.</u>	<u>Decr.</u>

Well closed at (hour, date): 3:30 P.M. 10-13-60 Total Time On Production 4 Hours

Oil Production During Test: 51.64 bbls; Grav. 58.0; Gas Production During Test: 9.69 MCF; GOR 188:1

Remarks Daily Oil Rate = 309.84 BO Daily Allowable = 308 BO
Daily Gas Rate = 58.14 MCF GOR: 188

FLOW TEST NO. 2

Well opened at (hour, date): 10:50 A.M. 10-14-60

	Upper Completion	Lower Completion
Indicate by (X) the zone producing.....	<u>X</u>	
Pressure at beginning of test.....	<u>1570</u>	<u>1560</u>
Stabilized? (Yes or No).....	<u>Yes</u>	<u>Yes</u>
Maximum pressure during test.....	<u>1570</u>	<u>1565</u>
Minimum pressure during test.....	<u>465</u>	<u>1555</u>
Pressure at conclusion of test.....	<u>465</u>	<u>1565</u>
Pressure change during test (Maximum minus Minimum).....	<u>1105</u>	<u>110</u>
Was pressure change an increase or a decrease?.....	<u>Decr.</u>	<u>Incr.</u>

Well closed at (hour, date): 10:50 A.M. 10-15-60 Total time on Production 24 Hours

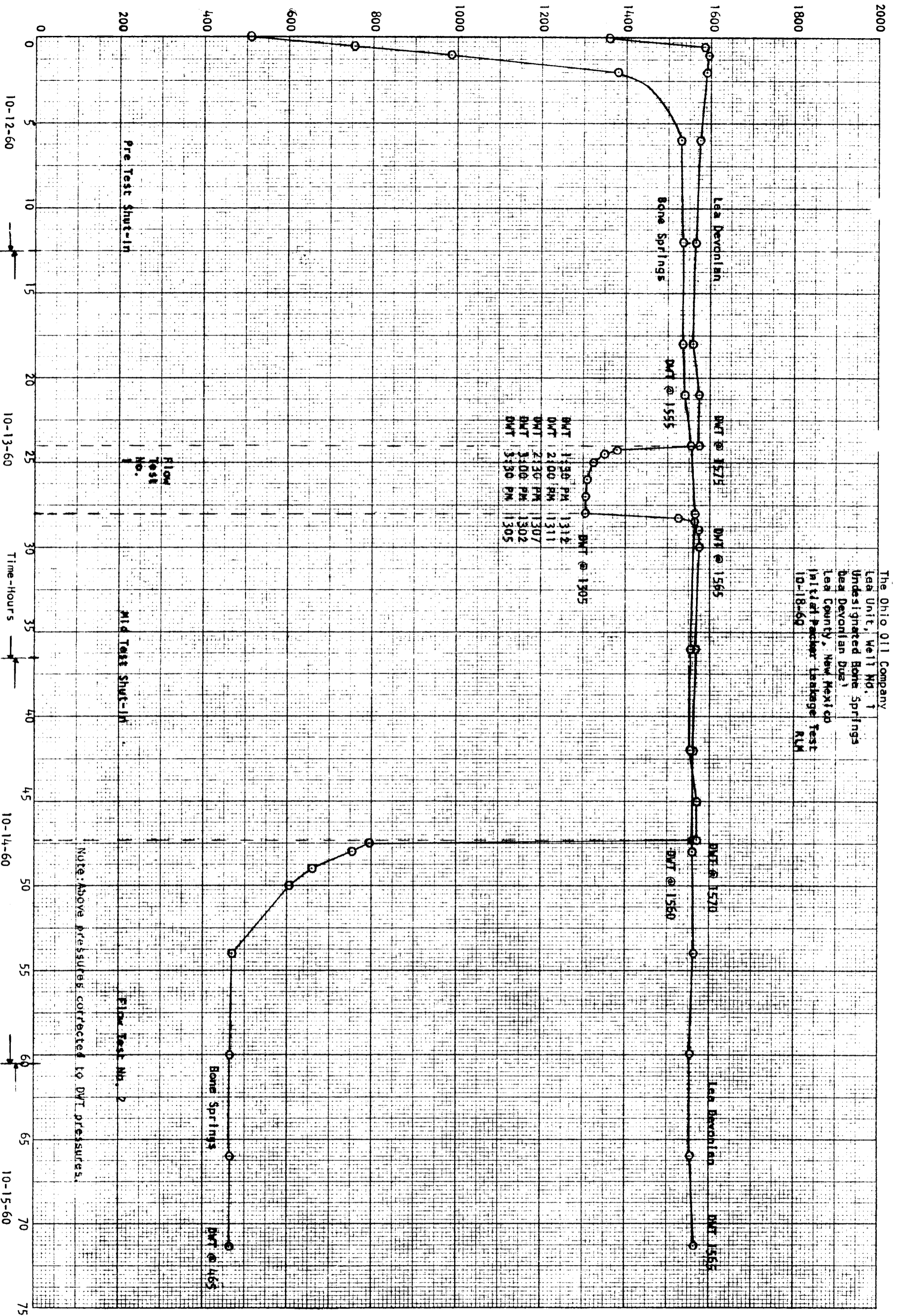
Oil Production During Test: 208.57 bbls; Grav. 43.5; Gas Production During Test: 252.4 MCF; GOR 1210

Remarks The results of this test indicate that the packer is holding satisfactorily.

I hereby certify that the information herein contained is true and complete to the best of my knowledge.

Approved _____ 19 60
 New Mexico Oil Conservation Commission

Operator The Ohio Oil Company
 By Robert L McLean
 Title Petroleum Engineer
 Date 10-19-60



The Ohio Oil Company
 Lea Unit, Well No. 1
 Undersignated Bone Springs
 Lea Devonian Dues
 Lea County, New Mexico
 Initial Fracture Leakage Test
 10-18-60

DWT @ 1575
 DWT @ 1565
 DWT @ 1595
 DWT @ 1505

NOTE: Above pressures corrected to DWT pressures.

Pre Test Shut-in

Mid Test Shut-in

Flow Test No. 2

Lea Devonian
 Bone Springs

DWT @ 1595

DWT @ 1505

DWT @ 1560

DWT @ 1555

Bone Springs
 DWT @ 1465

10-12-60

10-13-60

10-14-60

10-15-60

Time-Hours

Flow Test No.

THE OHIO OIL COMPANY
 "Diagrammatic Sketch of Mechanical Equipment Used In Dual Completion"
 Lea Unit, Well No. 1
 Unit L, Sec. 12, T-20-S, R-34-E
 Lea County, New Mexico

