

## DISTRICT I

P.O. Box 1980, Hobbs, NM 88241-1980

## DISTRICT II

P.O. Box Drawer DD, Artesia, NM 88211-0719

## DISTRICT III

1000 Rio Brazos Rd., Aztec, NM 87410

## DISTRICT IV

P.O. Box 2088, Santa Fe, NM 87504-2088

## State of New Mexico

Energy, Minerals and Natural Resources Department

## OIL CONSERVATION DIVISION

P.O. Box 2088

Santa Fe, New Mexico 87504-2088

Form C-102

Revised February 10, 1994

Instructions on back

Submit to Appropriate District Office

State Lease - 4 Copies

Fee Lease - 3 Copies

☐ AMENDED REPORT

## WELL LOCATION AND ACREAGE DEDICATION PLAT

<sup>1</sup> API Number 30 025 04000	<sup>2</sup> Pool Code 76480	<sup>3</sup> Pool Name EUMONT YATES 7RVRS QN
<sup>4</sup> Property Code 11037	<sup>5</sup> Property Name MONSTATE	<sup>6</sup> Well No. 2
<sup>7</sup> OGRID Number 022351	<sup>8</sup> Operator Name TEXACO EXPLORATION & PRODUCTION INC.	<sup>9</sup> Elevation 3711' GL

<sup>10</sup> Surface Location

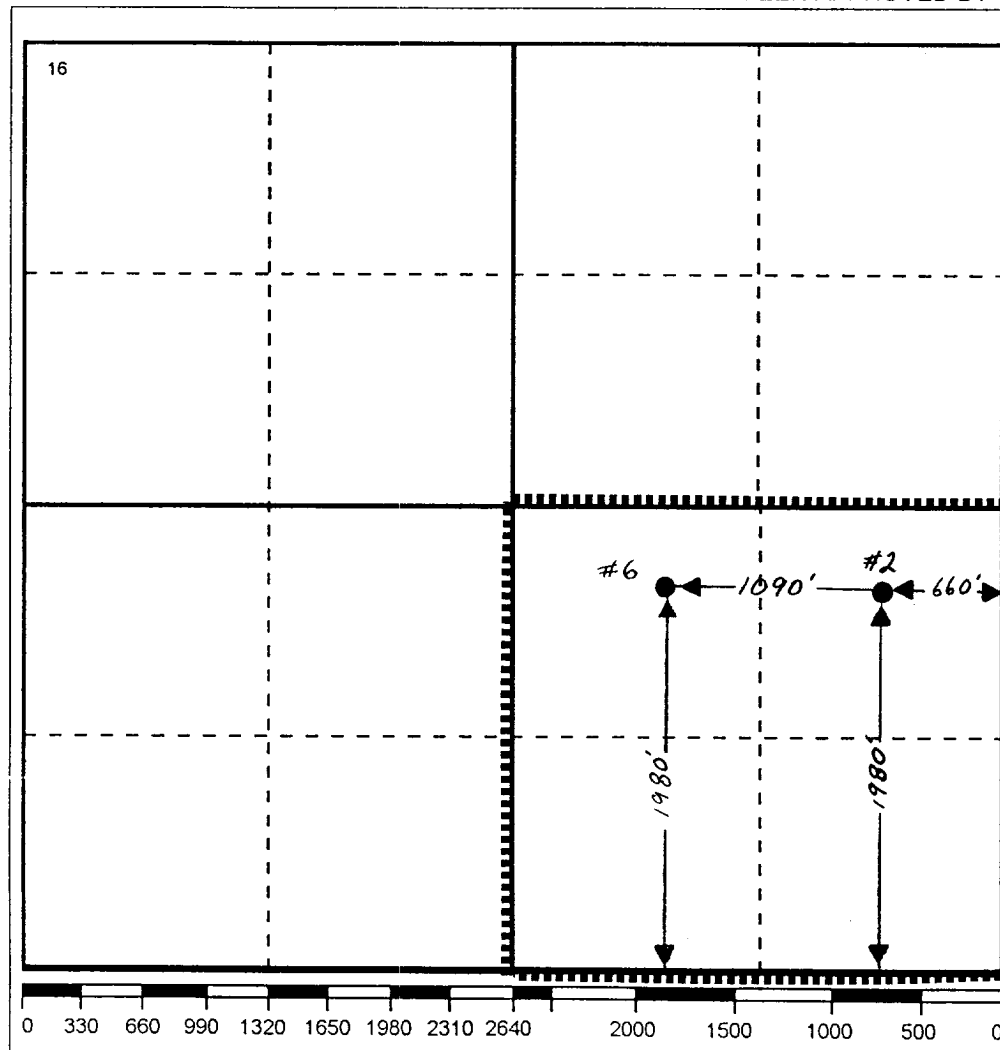
UI or lot no.	Section	Township	Range	Lot.Idn	Feet From The	North/South Line	Feet From The	East/West Line	County
I	13	19S	36E		1980	SOUTH	660	EAST	LEA

<sup>11</sup> Bottom Hole Location If Different From Surface

UI or lot no.	Section	Township	Range	Lot.Idn	Feet From The	North/South Line	Feet From The	East/West Line	County
---------------	---------	----------	-------	---------	---------------	------------------	---------------	----------------	--------

<sup>12</sup> Dedicated Acres 160	<sup>13</sup> Joint or Infill No	<sup>14</sup> Consolidation Code	<sup>15</sup> Order No.
--------------------------------------	-------------------------------------	----------------------------------	-------------------------

NO ALLOWABLE WILL BE ASSIGNED TO THIS COMPLETION UNTIL ALL INTERESTS HAVE BEEN CONSOLIDATED  
OR A NON-STANDARD UNIT HAS BEEN APPROVED BY THE DIVISION



## 17 OPERATOR CERTIFICATION

I hereby certify that the information contained herein is true and complete to the best of my knowledge and belief

Signature

Printed Name

Darrell J. Carriger

Position

Engineering Assistant

Date

1/11/95

## 18 SURVEYOR CERTIFICATION

I hereby certify that the well location shown on this plat was plotted from field notes of actual surveys made by me or under my supervision, and that the same is true and correct to the best of my knowledge and belief.

Date Surveyed

Signature &amp; Seal of

Professional Surveyor

Certificate No.

**NEW MEXICO  
OIL CONSERVATION COMMISSION**

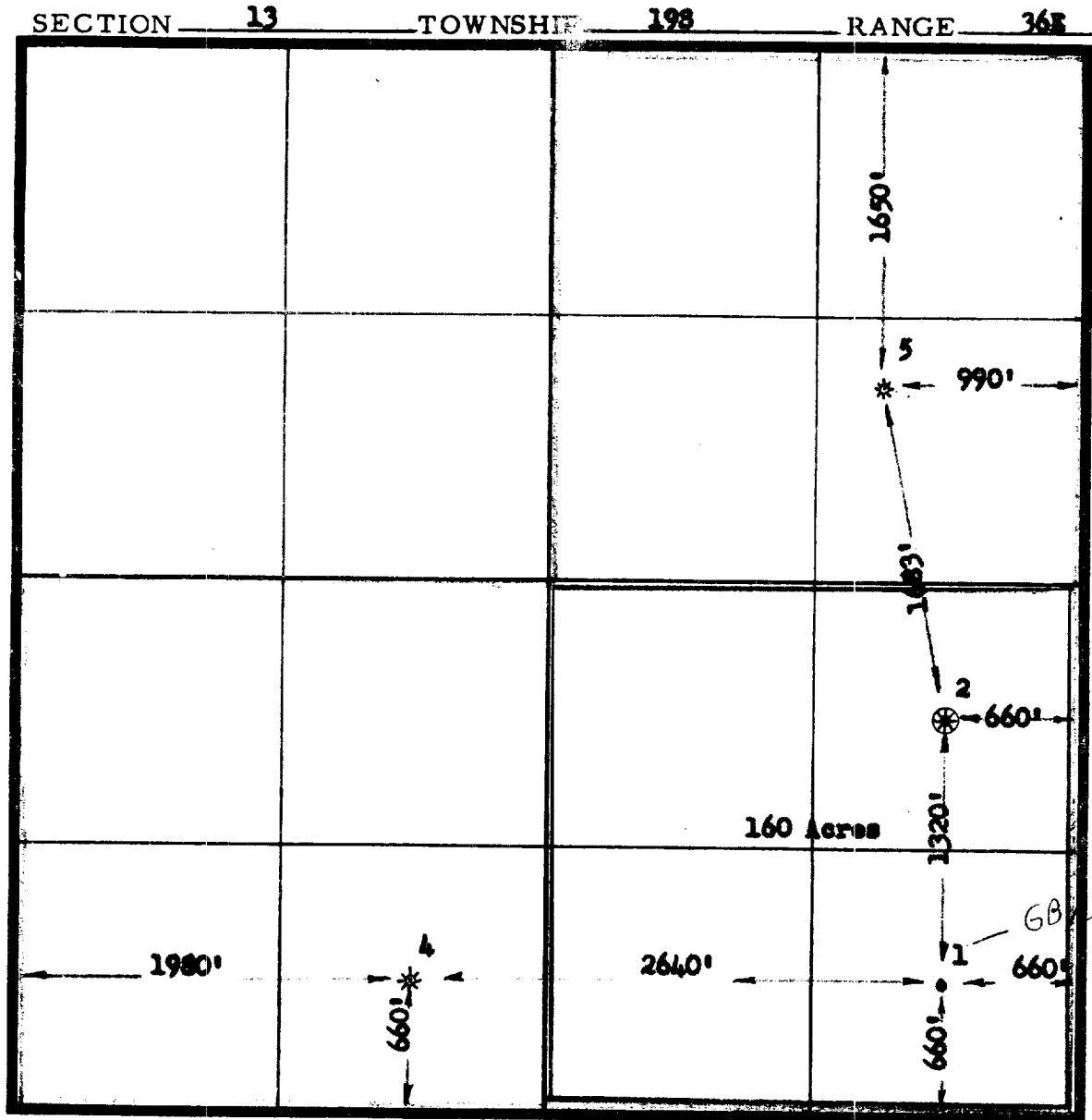
Gas Well Plat

Date \_\_\_\_\_

Skelly Oil Co.                      Monstate                      2  
Operator                      Lease                      Well No.

Name of Producing Formation Queens                      Pool Bumont

No. Acres Dedicated to the Well 160



I hereby certify that the information given above is true and complete to the best of my knowledge.

**LEGEND**

- Blue ——— lease lines
- Red ——— acreage allocated to gas well
- ——— oil well
- \* ——— gas well
- ⊗ ——— oil-gas dual well
- ⊕ ——— plugged well

Name J. J. Mulvaney  
Position \_\_\_\_\_  
Representing \_\_\_\_\_  
Address \_\_\_\_\_

(over)

### INSTRUCTIONS

1. Is this gas well a dual completion? Yes ☒ No ☐
2. If the answer to Question 1 is Yes, are there any other dually completed wells within the dedicated acreage? Yes ☐ No ☒

A separate plat must be filed for each gas well, outlining the area dedicated to such well and showing the location of all other wells (oil and gas) within the outlined area.

Mail in duplicate to the district office for the district in which the well is located.

