

Submit 3 Copies
to Appropriate
District Office

State of New Mexico
Energy, Minerals and Natural Resources Department

Form C-103
Revised 1-1-89

DISTRICT I
P.O. Box 1980, Hobbs, NM 88240

OIL CONSERVATION DIVISION
P.O. Box 2088
Santa Fe, New Mexico 87504-2088

DISTRICT II
P.O. Drawer DD, Artesia, NM 88210

DISTRICT III
1000 Rio Brazos Rd., Aztec, NM 87410

WELL API NO.
30-025-04049

5. Indicate Type of Lease
STATE FEE

6. State Oil & Gas Lease No.
B-3464-2

SUNDRY NOTICES AND REPORTS ON WELLS
(DO NOT USE THIS FORM FOR PROPOSALS TO DRILL OR TO DEEPEN OR PLUG BACK TO A
DIFFERENT RESERVOIR. USE "APPLICATION FOR PERMIT"
(FORM C-101) FOR SUCH PROPOSALS.)

7. Lease Name or Unit Agreement Name

North Monument G/SA Unit
Block 4

1. Type of Well:
OIL WELL GAS WELL OTHER

8. Well No.
16

2. Name of Operator
AMERADA HESS CORPORATION

9. Pool name or Wildcat
EUNICE MONUMENT G/SA

3. Address of Operator
DRAWER D, MONUMENT, NM 88265

4. Well Location
Unit Letter P : 660 Feet From The South Line and 660 Feet From The East Line

Section 24 Township 19S Range 36E NMPM LEA County

10. Elevation (Show whether DF, RKB, RT, GR, etc.)

11. Check Appropriate Box to Indicate Nature of Notice, Report, or Other Data

NOTICE OF INTENTION TO:

SUBSEQUENT REPORT OF:

- | | | | |
|--|---|--|---|
| PERFORM REMEDIAL WORK <input type="checkbox"/> | PLUG AND ABANDON <input type="checkbox"/> | REMEDIAL WORK <input type="checkbox"/> | ALTERING CASING <input type="checkbox"/> |
| TEMPORARILY ABANDON <input type="checkbox"/> | CHANGE PLANS <input type="checkbox"/> | COMMENCE DRILLING OPNS. <input type="checkbox"/> | PLUG AND ABANDONMENT <input type="checkbox"/> |
| PULL OR ALTER CASING <input type="checkbox"/> | | CASING TEST AND CEMENT JOB <input checked="" type="checkbox"/> | |
| OTHER: _____ <input type="checkbox"/> | | OTHER: <u>Repair Casing</u> <input type="checkbox"/> | |

12. Describe Proposed or Completed Operations (Clearly state all pertinent details, and give pertinent dates, including estimated date of starting any proposed work) SEE RULE 1103.

09-10 thru 09-28-92

Rigged up pulling unit & TOH with rods & pump. Removed wellhead & installed BOP. TOH w/ tbg. TIH with 6-1/8" drill bit & tagged at 4001' for 22' of fill in openhole & TOH. TIH w/a 7" Elder Lok-set retrievable bridge plug, at 3800'. Press. tested casing from 0' to 3800'. Press. decreased fr. 540 psi to 340 psi in 35 min. Checked intermediate-production casing annulus & found 420 psi, after 14 hour buildup. TIH w/a 7" Elder fullbore pkr. & set at 3768' & press. tested RBP. Press. decreased fr. 540 psi to 490 psi in 30 min. TOH w/ pkr. TIH w/retrieving tool. Released RBP & TOH. TIH w/repared 7" Elder Lok-set retrievable bridge plug. Set at 3705'. TIH w/a 7" Elder fullbore pkr. Set at 3674'. Press. tested casing from 3674' to 3705'. Press. decreased from 820 psi to 720 psi in 9 min. Press. tested csg. from 0' to 3674', press. decreased fr. 560 to 520 psi in 30 min.

I hereby certify that the information above is true and complete to the best of my knowledge and belief.

SIGNATURE R. L. Wheeler, Jr. TITLE Supv. Adm. Svc. DATE 10/27/92

TYPE OR PRINT NAME R. L. Wheeler, Jr. TELEPHONE NO. 505 393-2144

(This space for State Use)

ORIGINAL SIGNED BY JERRY SEXTON
DISTRICT I SUPERVISOR

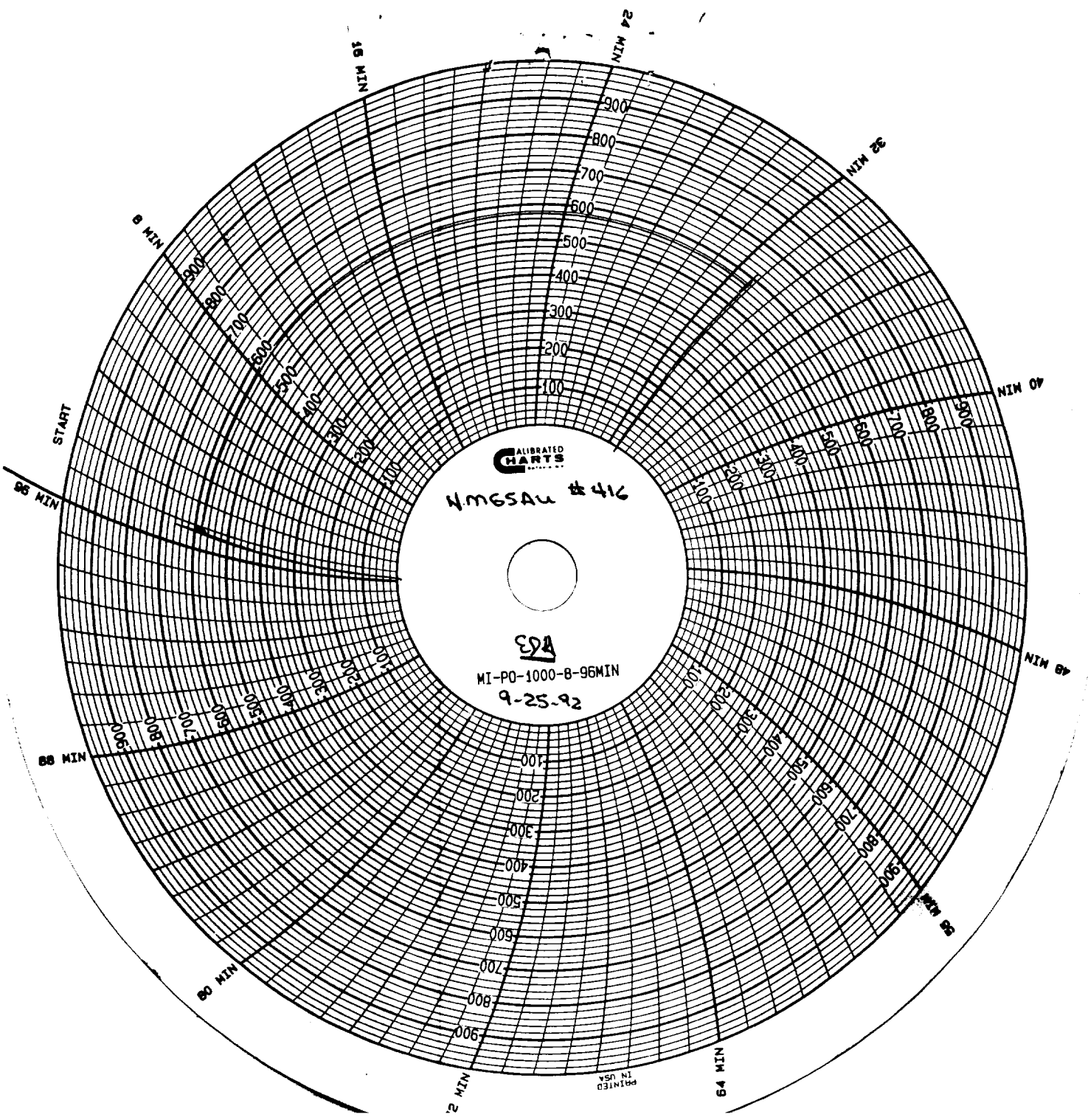
NOV 02 '92

APPROVED BY _____ TITLE _____ DATE _____

CONDITIONS OF APPROVAL, IF ANY:

Released pkr. & TOH. Schlumberger ran CBL-GR-CCL tools from 3675' to 0' with 500 psi on casing. Located top of cement at 2450' & bridge behind 7" csg. from 1970' to 1984'. TIH w/a retrieving tool, released RBP & TOH. Schlumberger ran a 7" Alpha cast iron bridge plug & set CIBP at 2510'. Schlumberger ran a 4" casing gun, loaded w/4 jet shots, & perforated 7" casing at 1376'. TIH w/a 7" Elder Fullbore pkr. at 2508' & press. tested CIBP to 1000 psi for 15 min. Pulled 29 jts. & reset pkr. at 1274'. Established a rate of 1.5 BPM at 1000 psi into squeeze hole at 1376'. Released pkr. & TOH. TIH with a 7" SV EZ drill cement retainer set at 1274'. Press. casing-tubing annulus to 500 psi & established an injection rate into perforation with 5 bbls. fresh water at 4.0 BPM & 500 psi, with full circulation to pit. Halliburton pumped 250 sks. Class "C" slurry w/4% bentonite gel & 1/4 lb/sk. flocele followed by 100 sks. Class "C" Neat slurry at 4.0 BPM. Press. increased fr. 200 psi to 700 psi. Sheared out of retainer & reversed out an estimated 2 sks. cement slurry & TOH. TIH w/a 6-1/8" drill bit & drilled cement fr. 1267' to 1274', cement retainer fr. 1274' to 1277' & cement fr. 1277' to 1320'. Circulated hole clean. Drilled cement fr. 1320' to 1383' & stringers from 1383' to 1410'. Circulated hole clean. TIH w/drill bit to 2504' on 73 jts. 2-7/8" tbg. Circulated hole w/fresh water & press. tested csg. from 0' to 2510'. Press. dec. fr. 520 psi to 480 psi in 30 min. TOH w/bit. TIH w/a 7" Elder fullbore pkr. Set at 1342' & press. tested csg. from 0' to 1342'. Press. dec. fr. 540 psi to 510 psi in 15 min. Reset pkr. repeatedly to locate leak interval. Found csg. fr. 1404' to 2510' would loose 10 psi in 15 min., casing fr. 1214' to 2510' would loose 50 psi in 5 min. & casing from 0' to 1214' would loose 0 psi in 15 min. TOH w/pkr. TIH w/45 jts. 2-7/8" tbg. Set tbg. open ended at 1427'. Halliburton spotted 37 sks. micro-matrix cement plug from 1427' to 1209' & displaced slurry w/7 bbls. fresh water. TIH w/a 7" Elder fullbore pkr. set at 794'. Pumped 1.5 bbls. fresh water & press. increased to 800 psi. Pumped 0.5 bbls. fresh water & press. increased to 1000 psi. Press. dec. to 900 psi & held at 900 psi. Released pkr. at 794' & set at 1214'. Press. tested csg. from 1214' to 1251'. Press. dec. 80 psi in 15 min. TOH w/pkr. TIH w/tbg., tagged top of cement at 1251' & pulled tbg. to 1248'. Halliburton spotted 30 sks. micro-matrix cement plug fr. 1251' to 1075'. TIH w/7" fullbore pkr. set at 794' & press. casing-tubing annulus to 500 psi. Pumped 0.25 bbls. fresh water & press. increased to 625 psi. Pump press. remained at 625 psi for 2 min. Pumped 0.25 bbls. fresh water & press. increased to 1100 psi. Shutdown pump & press. decreased to 1,075 psi & remained at 1075 psi for 5 min. WOC. Released pkr. & TOH. TIH w/a 6-1/8" drill bit. Tagged top of cement plug at 1099'. Drilled cement from 1099' to 1382'. Circ. clean. Drilled cement from 1382' to 1424' & circulated hole clean. Press. tested casing from 0' to 2510'. Press. decreased fr. 585 psi to 575 psi in 32 min. Ran bit to CIBP at 2510' & circulated hole with 100 bbls. fresh water. Drilled out CIBP & ran bit to 4000' & TOH. TIH w/tbg. set at 3992'. Removed BOP & installed wellhead. TIH w/pump & rods. RDPU & cleaned location & resumed prod. well.

Test of 10-14-92" prod. 17 bo & 20 bw in 24 hrs.



CALIBRATED
HARTS

NMGSAU # 416

324

MI-PO-1000-8-96MIN

9-25-92

PRINTED
IN USA

START

18 MIN

24 MIN

30 MIN

40 MIN

48 MIN

56 MIN

64 MIN

72 MIN

80 MIN

88 MIN

96 MIN

RECEIVED
OCT 8 6 1992
COMMISSIONS OFFICE