

DISTRICT I
P.O. Box 1980, Hobbs, NM 88240

DISTRICT II
P.O. Drawer DD, Artesia, NM 88210

DISTRICT III
1000 Rio Benzon Rd., Aztec, NM 87410

OIL CONSERVATION DIVISION
P.O. Box 2088
Santa Fe, New Mexico 87504-2088

WELL API NO. 3002504059	
5. Indicate Type of Lease STATE <input checked="" type="checkbox"/> FEE <input type="checkbox"/>	
6. State Oil & Gas Lease No. A-1543-1	
7. Lease Name or Unit Agreement Name NORTH MONUMENT G/SA UNIT BLK. 9	
8. Well No. 15	
9. Pool name or Wildcat EUNICE/MONUMENT GB-8A	

SUNDRY NOTICES AND REPORTS ON WELLS
(DO NOT USE THIS FORM FOR PROPOSALS TO DRILL OR TO DEEPEN OR PLUG BACK TO A DIFFERENT RESERVOIR. USE "APPLICATION FOR PERMIT" (FORM C-101) FOR SUCH PROPOSALS.)

1. Type of Well: OIL WELL <input checked="" type="checkbox"/> GAS WELL <input type="checkbox"/> OTHER <input type="checkbox"/>	
2. Name of Operator AMERADA HESS CORPORATION	
3. Address of Operator DRAWER D, MONUMENT, NEW MEXICO 88265	
4. Well Location Unit Letter <u>0</u> : <u>660</u> Feet From The <u>SOUTH</u> Line and <u>1980</u> Feet From The <u>EAST</u> Line Section <u>25</u> Township <u>19S</u> Range <u>36E</u> NMPM LEA County	

10. Elevation (Show whether DF, RKB, RT, GR, etc.)

11. Check Appropriate Box to Indicate Nature of Notice, Report, or Other Data			
NOTICE OF INTENTION TO:		SUBSEQUENT REPORT OF:	
PERFORM REMEDIAL WORK <input type="checkbox"/>	PLUG AND ABANDON <input type="checkbox"/>	REMEDIAL WORK <input checked="" type="checkbox"/>	ALTERING CASING <input type="checkbox"/>
TEMPORARILY ABANDON <input type="checkbox"/>	CHANGE PLANS <input type="checkbox"/>	COMMENCE DRILLING OPNS. <input type="checkbox"/>	PLUG AND ABANDONMENT <input type="checkbox"/>
PULL OR ALTER CASING <input type="checkbox"/>		CASING TEST AND CEMENT JOB <input type="checkbox"/>	
OTHER: <input type="checkbox"/>		OTHER: <input type="checkbox"/>	

12. Describe Proposed or Completed Operations (Clearly state all pertinent details, and give pertinent dates, including estimated date of starting any proposed work) SEE RULE 1103.

10-16-92 Thru 10-21-92

Rigged up X-Pert Well service pulling unit. TOH with a 1-1/4" x 16' polished rod with a 1-1/2" x 6' liner, 2-3/4" x 2' pony rods, 3/4" x 4' pony rod, 64 3/4" sucker rods, 89 5/8" sucker rods, and a 2" x 1-1/2" x 12' pump with a 1" x 6' gas anchor. Removed 9-5/8" Hinderlter tubinghead packing and slip assembly and installed an adapter flange and a 6" 900 manual BOP. TOH with 2-3/8" x 10' tbg. sub, 124 jts. 2-3/8" H-40 10v tbg., 2-3/8" sn, 2-3/8" x 4' perforated sub, 2-3/8" mud joint, bull plugged. TIH with a 4-3/4" drill bit and bit sub on 127 jts. 2-3/8" tbg., tagged at 3,952', for 46' of fill, and TOH with 127 jts. 2-3/8" tbg., bit sub and drill bit. TIH with a 5-1/2" elder lok-set retrievable bridge plug, retrieving tool and sn on 119 jts. 2-3/8" tbg., set RBP at 3,700'. Pulled 1 jt. 2-3/8" tbg. and circulated hole clean with 90 bbls. fresh water. Pressure tested casing from 0' to 3,700'. Pressure decreased from 580 psi to 550 psi in 30 mins. Checked surface-intermediate (Continued On Back)

I hereby certify that the information above is true and complete to the best of my knowledge and belief.

SIGNATURE Terry L. Harvey TITLE Adm. Assistant DATE 11-12-92

TYPE OR PRINT NAME Terry L. Harvey TELEPHONE NO. 505-393-2144

(This space for State Use) ORIGINAL SIGNED BY JERRY SEXTON
DISTRICT I SUPERVISOR

APPROVED BY _____ TITLE _____ DATE _____

CONDITIONS OF APPROVAL, IF ANY:

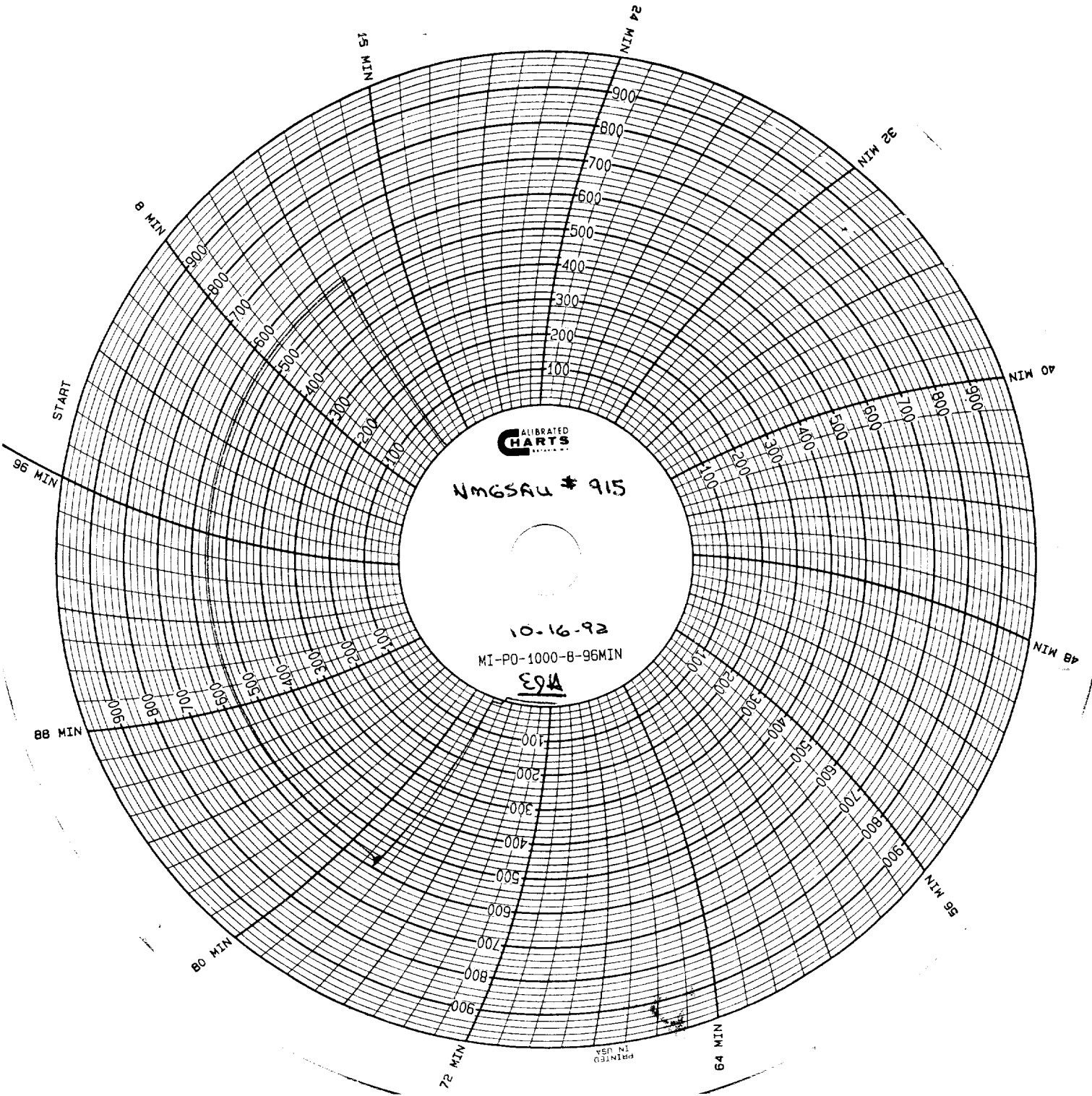
NOV 30 '92

and intermediate-production casing annuli and found valves on risers open to atmosphere with no apparent flow. Closed in 1 60 hour buildup. Dropped sv, pressure tested tbg. to 2,000 psi and retrieved sv.

10-20-92: Released RBP at 3,700' and TOH with 119 jts. 2-3/8" tbg., sn, retrieving tool and 5-1/2" RBP. TIH with a 4-3/4" drill bit, bit sub, check valve, 8 jts. 2-3/8" tbg. (as cavity) crossover sub, 3-5/8" tubing conveyed pump, crossover, ported sub and 120 jts. 2-3/8" tbg. Tagged top of fill at 3,948' and cleaned out openhole from 3,948' to 3,998'. TOH with 120 jts. 2-3/8" tbg. and tubing conveyed pump assembly. Checked surface and intermediate casing annulus risers for 72 hour buildup and found no pressure or flow. Rigged up Schlumberger and ran CNL-CCL-GR tools from 3,989' to 3,262'. Schlumberger found TD at 3,989'. POH with CNL-CCL-GR tools and ran LDT-CCL-GR tools from 3,989' to casing shoe at 3,807'. POH and rigged down Schlumberger. TIH with 5-1/2" elder fullbore packer and sn on 120 jts. 2-3/8" tbg. Set packer at 3,752'. Loaded casing-tubing annulus with 60 bbls. fresh water.

10-21-92: Pressured casing-tubing annulus to 500 psi and squeezed for Barium Sulfate scale with 20 bbls. 2% KCL water, 55 gallons Champion T-133 inhibitor mixed with 20 bbls. fresh water and 150 bbls. 2% KCL water at 2.5 BPM and 900 PSI 5 min. SIP-0 psi. Released packer and TOH with 120 jts. 2-3/8" tbg., sn and packer. TIH with 1 jt. 2-3/8" tbg. (bull plugged) 2-3/8" perforated sub, 2-3/8" sn, 124 jts. 2-3/8" H-40 10v tbg. and a 2-3/8" x 10' sub. Removed BOP and installed tubinghead slips and packing. Set tbg. at 3,918' and sn at 3,882'. TIH with a 2" x 1.5" x 12' #A-1024 pump, 89 5/8" sucker rods, 64 3/4" sucker rods, 2-3/4" x 2' pony rods, 3/4" x 4' pony rod and a 1-1/4" x 16' polished rod with a 1-1/2" x 6' liner. Loaded tbg. with fresh water and checked pump action. Cleaned location and rigged down pulling unit.

24 Hour Test Information: 20 BOPD and 100 BWPD



CALIBRATED
CHARTS

NMGSAU # 915

10-16-92

MI-P0-1000-8-96MIN

EQA

PRINTED
IN USA