

Submit 3 Copies
to Appropriate
District Office

State of New Mexico
Energy, Minerals and Natural Resources Department

Form C-103
Revised 1-1-89

DISTRICT I
P.O. Box 1980, Hobbs, NM 88240

OIL CONSERVATION DIVISION
P.O. Box 2088
Santa Fe, New Mexico 87504-2088

DISTRICT II
P.O. Drawer DD, Artesia, NM 88210

DISTRICT III
1000 Rio Brazos Rd., Aztec, NM 87410

WELL API NO. 30-025-04121
5. Indicate Type of Lease STATE <input type="checkbox"/> FEE <input checked="" type="checkbox"/>
6. State Oil & Gas Lease No.

<p align="center">SUNDRY NOTICES AND REPORTS ON WELLS (DO NOT USE THIS FORM FOR PROPOSALS TO DRILL OR TO DEEPEN OR PLUG BACK TO A DIFFERENT RESERVOIR. USE "APPLICATION FOR PERMIT" (FORM C-101) FOR SUCH PROPOSALS.)</p>		<p>7. Lease Name or Unit Agreement Name North Monument G/SA Unit Blk 13</p>	
<p>1. Type of Well: OIL WELL <input checked="" type="checkbox"/> GAS WELL <input type="checkbox"/> OTHER <input type="checkbox"/></p>		<p>8. Well No. 3</p>	
<p>2. Name of Operator Amerada Hess Corporation</p>		<p>9. Pool name or Wildcat Eunice Monument G/SA</p>	
<p>3. Address of Operator Drawer D, Monument, New Mexico 88265</p>			
<p>4. Well Location Unit Letter <u>C</u> : <u>660</u> Feet From The <u>North</u> Line and <u>1980</u> Feet From The <u>West</u> Line Section <u>35</u> Township <u>19S</u> Range <u>36E</u> NMPM Lea County</p>			
<p>10. Elevation (Show whether DF, RKB, RT, GR, etc.)</p>			

11. Check Appropriate Box to Indicate Nature of Notice, Report, or Other Data

NOTICE OF INTENTION TO:		SUBSEQUENT REPORT OF:	
PERFORM REMEDIAL WORK <input type="checkbox"/>	PLUG AND ABANDON <input type="checkbox"/>	REMEDIAL WORK <input type="checkbox"/>	ALTERING CASING <input type="checkbox"/>
TEMPORARILY ABANDON <input type="checkbox"/>	CHANGE PLANS <input type="checkbox"/>	COMMENCE DRILLING OPNS. <input type="checkbox"/>	PLUG AND ABANDONMENT <input type="checkbox"/>
PULL OR ALTER CASING <input type="checkbox"/>		CASING TEST AND CEMENT JOB <input type="checkbox"/>	
OTHER: _____ <input type="checkbox"/>		OTHER: <u>Cement job.</u> <input checked="" type="checkbox"/>	

12. Describe Proposed or Completed Operations (Clearly state all pertinent details, and give pertinent dates, including estimated date of starting any proposed work) SEE RULE 1103.
10-23 thru 11-9-92

MIRU Ram Well Svc. pulling unit. Removed wellhead and installed BOP. TIH w/2 jts. 2-3/8" tbg., with bottom of tbg. at 3,744'. Pumped 5 sks. sand down 2-3/8" tbg. on RBP at 3,778'. Estimated top of sand on RBP at 3,728'. TOH w/ tbg.

Schlumberger rigged up & ran CBL-GR-CCL tools. Found top of sand at 3,720'. Cement bond log showed 75% or greater bonding from 3,710' to 3,490', 0% to 50% bonding from 3,490' to 2,960' & 75% or greater bonding from 2,954' to 2,920'. Estimated top of cement at 2,744' with possible cement stringers to 2,686'. logged from 3,720' to 0'. RIH w/4" csg. gun, loaded with four jet shots and perf. 6-5/8" csg. at 2,660'. TIH w/6-5/8" elder fullbore pkr. set at 2,587'. Pumped 20 bbls. fresh water down tbg., through 6-5/8" csg. perf. & broke circ. through intermediate-production csg. annulus. Dropped 5 lbs. of red dye & followed with
Cont. on reverse

I hereby certify that the information above is true and complete to the best of my knowledge and belief.

SIGNATURE R. L. Wheeler TITLE Supv. Adm. Svc. DATE 12-11-92
TYPE OR PRINT NAME R. L. Wheeler TELEPHONE NO. 505-393-2144

(This space for State Use)
ORIGINAL SIGNED BY JERRY SEXTON
DISTRICT I SUPERVISOR
APPROVED BY _____ TITLE _____ DATE _____
CONDITIONS OF APPROVAL, IF ANY:

DEC 29 '92

fresh water at 3.5 BPM & 700 PSI. Had dye to recovery to pit, through intermediate-production csg annulus, after 67 bbls. pumped. Dropped SV, press. tested tbg. to 2,000 PSI & TOH w/pkr. TIH w/6-5/8" SV EZ drill cement retainer.

Set at 3,586', sheared off retainer, tested tbg. to 2,000 PSI, pressured csg.-tbg. annulus to 500 PSI. Established an inj. rate at 3.0 BPM and 750 PSI w/14 bbls. fresh water. Had full circ. to pit after 3.5 bbls. Halliburton pumped 250 sks. Class "C" cement slurry with 4% Bentonite Get and ¼ lb. Flocele per sack. Followed by 150 sks. Class "C" cement slurry with 0.6% gas stop additive at 2.5 BPM. Pump press. increased from 225 PSI at 31 bbls. slurry pumped to 900 PSI at 61 bbls. slurry pumped. At 73 bbls. slurry pumped, had cement circ. to pit, through intermediate-production csg. annulus. Circ. 134 sks. to pit. Displaced slurry with 5 bbls. fresh water at 2.0 BPM and 1,000 PSI & closed intermediate-production csg. annulus valve.. Pumped 1.0 bbls. fresh water & press. increased to 1,150 PSI. Shutdown pump and press. remained at 1,150 PSI for 5 mins. Stung out of retainer & reversed out an estimated 17 sks. to pit. Sand blasted concrete cellar walls and csg.head equip.

Removed BOP & adapter flange from wellhead. Loaded 6-5/8" & 13-3/8" csgs. with fresh water. Ran a 6-5/8" csg. spear, crossover sub and a 2-7/8" x 10' N-80 tbg. sub. Pulled 80,000# and split 10" nominal hercules csg.head. Removed slip bowl, packing, & slips. Stacked out 6-5/8" csg. & released spear. Cut 8-5/8" csg. above 8-5/8" csg. collar, chiseled out cement and removed 8-5/8" pin from 8-5/8" collar. Cut off 6-5/8" csg. & welded a 6-5/8" slip x 7" 8RD collar, with a 7" 23# piece of csg., 48" in length, on 6-5/8" csg. stub. Stripped over an 11" 900 National casinghead flange, with a 43" piece of 8-5/8" 32# csg., welded both internally & externally in national casinghead. Note: welds tested to 500 PSI. Made up 8-5/8" csg. section in 8-5/8" csg. collar. Installed slips & packoff assembly & 7-1/16 x 11" 900 Tubinghead spool & tested packoff to 2,500 PSI. Installed a 6" 900 manual BOP.

TIH w/5-7/8" drill bit. Tagged top of cement at 2,578'. Drilled cement from 2,578' to 2,586', cement retainer from 2,586' to 2,588 & cement to 2,604'. Circ. hole clean.

Drilled cement from 2,604' to 2,675' & ran drill bit to 2,692'. Press. tested csg. from 0' to 3,720'. Press. decreased from 650 PSI to 575 PSI in 30 min. TOH w/5-7/8" drill bit. TIH w/6-5/8" Elder fullbore pkr. Set at 2,638'. Press. tested csg. from 0' to 2,683' & press. decreased from 555 PSI to 535 PSI in 30 mins. TIH with pkr. & hit obstruction at 2,736'. TOH with pkr. TIH w/5-7/8" drill bit. Drilled cement from 2,736' to 2,745'. Circ. hole clean & TIH with bit to liner top at 3,728'. Tested csg. fr. 0' - 3728'. Press. decreased fr. 570# to 550# in 30 min. Found BOP leaking prior to final press. test.

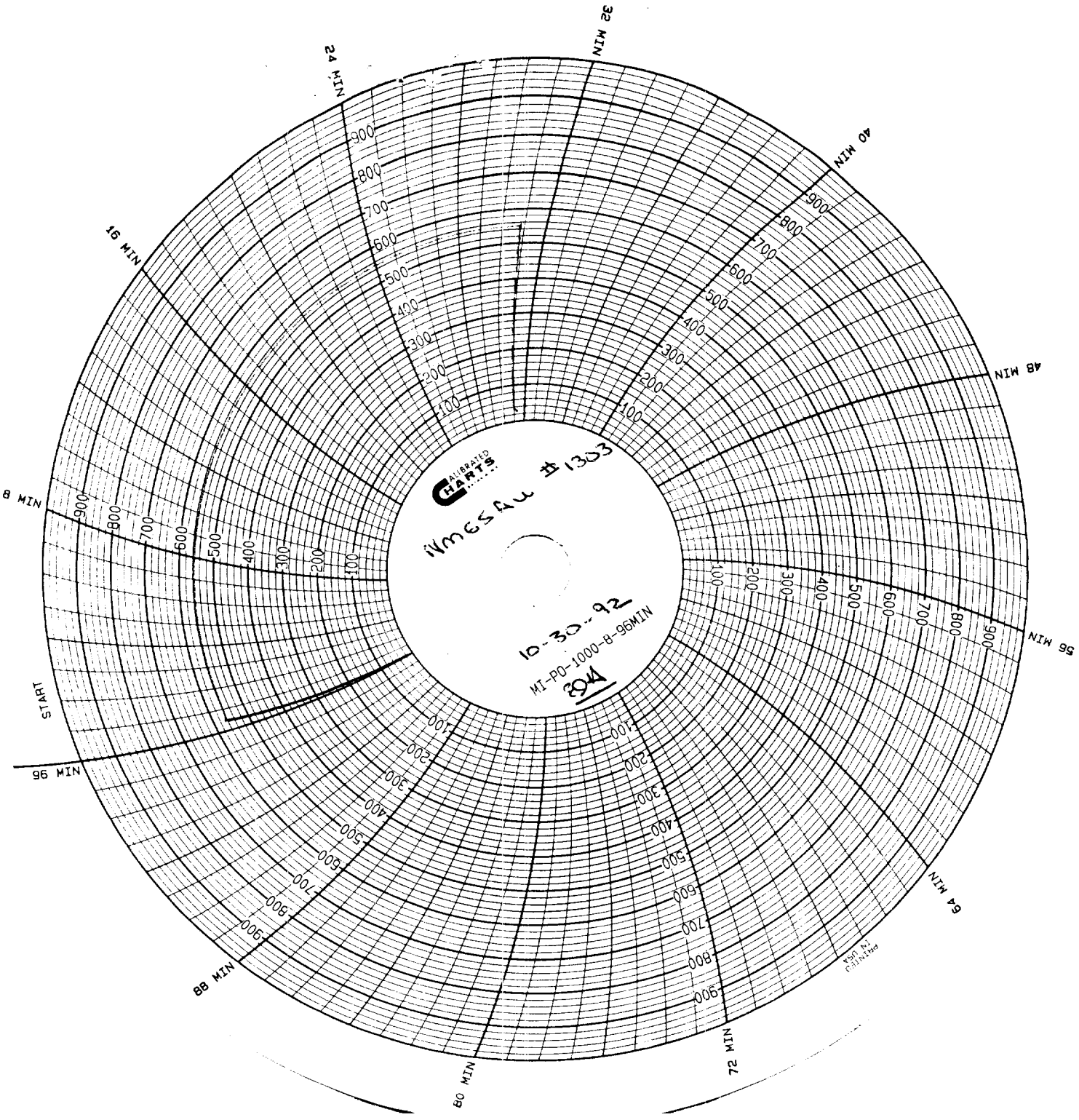
TOH w/5-7/8" drill bit. TIH with retrieving tool, circ. sand from 3,728' to 3,778'. TOH with RBP. TIH w/tbg. Removed BOP & installed wellhead. Set tubing open ended at 3,891'. TIH with pump & rods. Cleaned location & rigged down pulling unit & resumed prod. well.

Test of 12-3-92: Prod. 4 b.o., 52 b.w., & 245 MCFGPD in 24 hours on 54" x 7SPM.



Wmesau #1303

10-30-92
MI-PO-1000-B-96MIN
30M



SMITH CHART