

DISTRICT I  
P.O. Box 1980, He M 88240

DISTRICT II  
P.O. Drawer DD, Artesia, NM 88210

DISTRICT III  
1000 Rio Brazos Rd., Aztec, NM 87410

State of New Mexico  
Energy, Minerals and Natural Resources Department

Form C-102  
Revised February 10, 1994  
Instruction on back  
Submit to Appropriate District Office  
State Lease - 4 Copies  
Fee Lease - 3 Copies

OIL CONSERVATION DIVISION  
P.O. Box 2088  
Santa Fe, New Mexico 87504-2088

AMENDED REPORT

WELL LOCATION AND ACREAGE DEDICATION PLAT

|                            |   |                               |
|----------------------------|---|-------------------------------|
| API Number<br>30-025-04130 | Pool Code<br>76480                        | Pool Name<br>EUMONT YATES 7RQ |
| Property Code<br>000162    | Property Name<br>J.R. PHILLIPS GAS COM    | Well Number<br>1              |
| OGRID No.<br>000495        | Operator Name<br>AMERADA HESS CORPORATION | Elevation<br>3586' K.B.       |

Surface Location

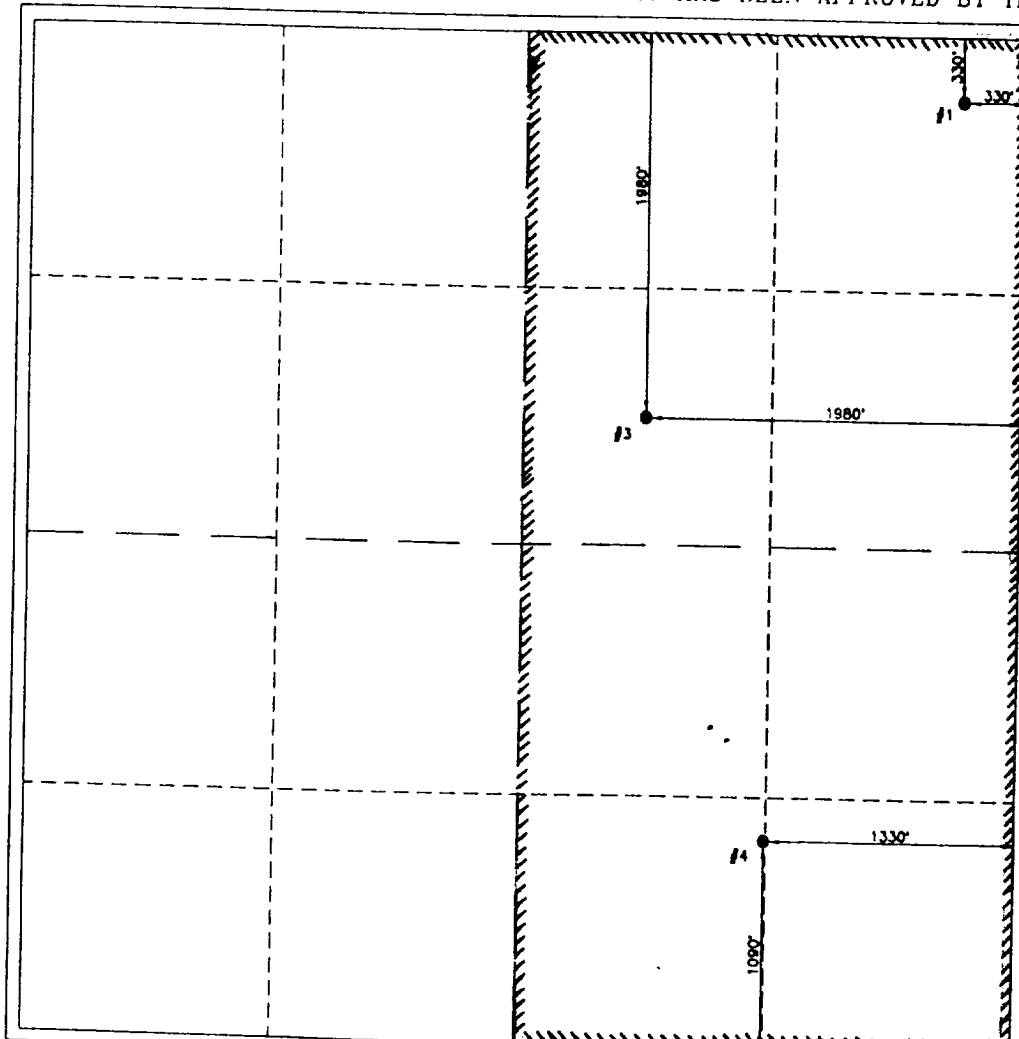
| UL or lot No. | Section | Township | Range | Lot Idn | Feet from the | North/South line | Feet from the | East/West line | County |
|---------------|---------|----------|-------|---------|---------------|------------------|---------------|----------------|--------|
| A             | 1       | 20S      | 36E   |         | 330           | NORTH            | 330           | EAST           | LEA    |

Bottom Hole Location If Different From Surface

| UL or lot No. | Section | Township | Range | Lot Idn | Feet from the | North/South line | Feet from the | East/West line | County |
|---------------|---------|----------|-------|---------|---------------|------------------|---------------|----------------|--------|
|               |         |          |       |         |               |                  |               |                |        |

|                           |                      |                    |  |
|---------------------------|----------------------|--------------------|--|
| Dedicated Acres<br>320.07 | Joint or Infill<br>Y | Consolidation Code | Order No.<br>NSL 3340-A(SD) NSP-367 NSL-3340(SD) |
|---------------------------|----------------------|--------------------|--|

NO ALLOWABLE WILL BE ASSIGNED TO THIS COMPLETION UNTIL ALL INTERESTS HAVE BEEN CONSOLIDATED OR A NON-STANDARD UNIT HAS BEEN APPROVED BY THE DIVISION



**OPERATOR CERTIFICATION**

I hereby certify the the information contained herein is true and complete to the best of my knowledge and belief.

*R.L. Howell*  
Signature

R.L. HOWELL  
Printed Name

PROFESSIONAL PETROLEUM ENGINEER  
Title

June 5, 1996  
Date

**SURVEYOR CERTIFICATION**

I hereby certify that the well location shown on this plat was plotted from field notes of actual surveys made by me or under my supervision, and that the same is true and correct to the best of my belief.

Date Surveyed

Signature & Seal of Professional Surveyor

Certificate No.