

DISTRICT I
P.O. Box 1980, Bolita, NM 88440

State of New Mexico
Energy, Minerals and Natural Resources Department

Form C-102
Rev. 4 February 10, 1994
Instruction on back
Submit to Appropriate District Office
State Lease - 4 Copies
Fee Lease - 3 Copies

DISTRICT II
P.O. Drawer DD, Artesia, NM 88210

OIL CONSERVATION DIVISION
P.O. Box 2088
Santa Fe, New Mexico 87504-2088

AMENDED REPORT

DISTRICT III
1000 Rio Brazos Rd., Lileco, NM 87410

WELL LOCATION AND ACREAGE DEDICATION PLAT

API Number 30-025-04230	Pool Code 76480	Pool Name EUMONT-YATES SEVEN RIVERS QUEEN
Property Code 000075	Property Name H.W. Andrews	Well Number 6
OCRID No. 000495	Operator Name Ameroda Hess Corporation	Elevation 3576' KB

Surface Location

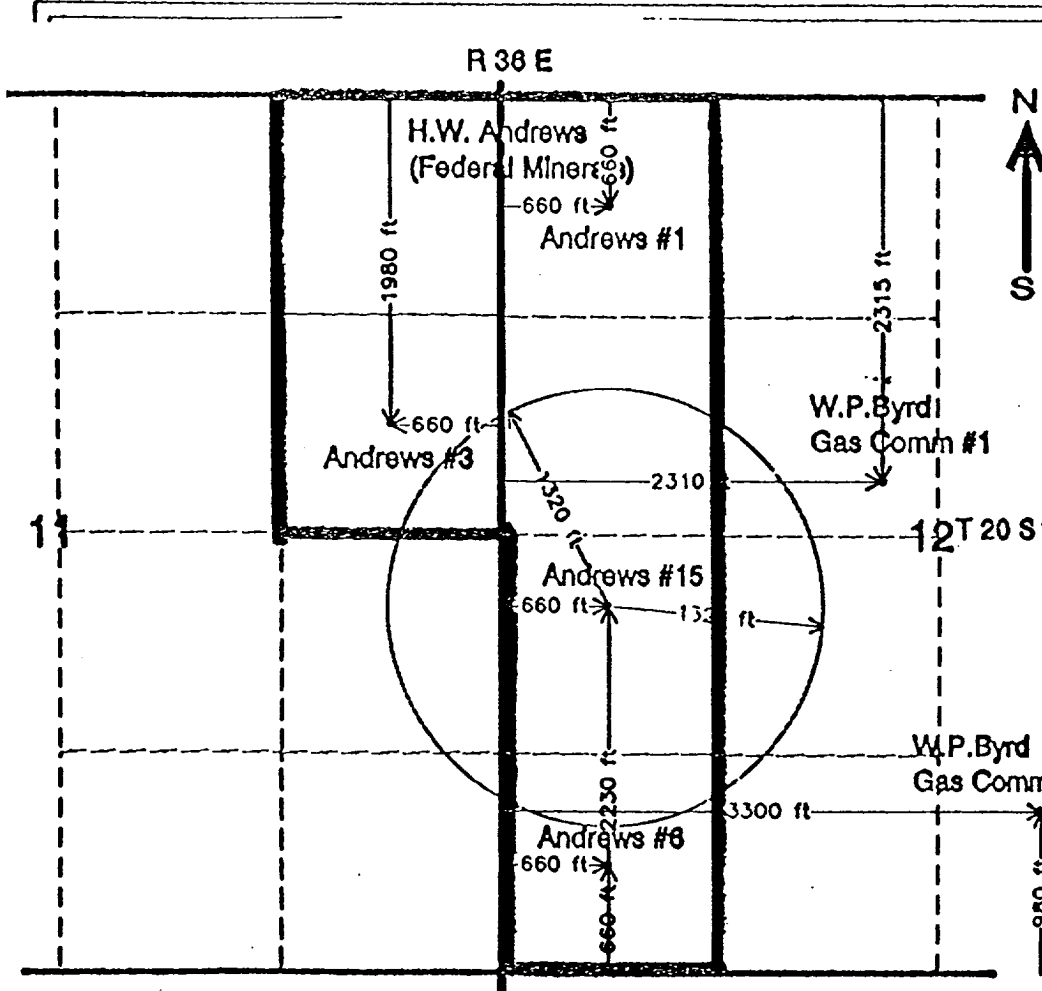
UL or lot No.	Section	Township	Range	Lot Idn	Feet from the	North/South line	Feet from the	East/West line	County
M	12	20S	36E		660	South	660	West	LEA

Bottom Hole Location If Different From Surface

UL or lot No.	Section	Township	Range	Lot Idn	Feet from the	North/South line	Feet from the	East/West line	County

Dedicated Acres 240	Joint or Infill Y	Consolidation Code	Order No. SD-95-8 R-573(1/13/55), NSL-3151(SD)(9/9/92), NSL-3151-A(SD)(12/1994)
------------------------	----------------------	--------------------	---

NO ALLOWABLE WILL BE ASSIGNED TO THIS COMPLETION UNTIL ALL INTERESTS HAVE BEEN CONSOLIDATED OR A NON-STANDARD UNIT HAS BEEN APPROVED BY THE DIVISION



OPERATOR CERTIFICATION

I hereby certify that the information contained herein is true and complete to the best of my knowledge and belief.

Robert L. Williams Jr.
Signature
Robert L. Williams Jr.
Printed Name
Sr. Production Foreman
Title
11-9-95
Date

SURVEYOR CERTIFICATION

I hereby certify that the well location shown on this plat was plotted from field notes of actual surveys made by me or under my supervision, and that the same is true and correct to the best of my belief.

May 30, 1995
Date Surveyed
Signature & Seal of Professional Surveyor
W.O. Num. 5383d
Cert. No. 7977

District I
 PO Box 1900, Hobbs, NM 88241-1900
 District II
 PO Drawer DD, Artesia, NM 88211-0719
 District III
 1000 Rio Brazos Rd., Aztec, NM 87410
 District IV
 PO Box 2088, Santa Fe, NM 87504-2088

State of New Mexico
 Energy, Minerals & Natural Resources Department

OIL CONSERVATION DIVISION
 PO Box 2088
 Santa Fe, NM 87504-2088

Form C-102
 Revised February 10, 1994
 Instructions on back
 Submit to Appropriate District Office
 State Lease - 4 Copies
 Fee Lease - 3 Copies

AMENDED REPORT

WELL LOCATION AND ACREAGE DEDICATION PLAT

API Number 30-025-04230		Pool Code 76480	Pool Name EUMONT YATES 7RQ
Property Code 000075	Property Name H.W. ANDREWS		Well Number 6
OGRID No. 000495	Operator Name AMERADA HESS CORPORATION		Elevation 3576' KB

Surface Location

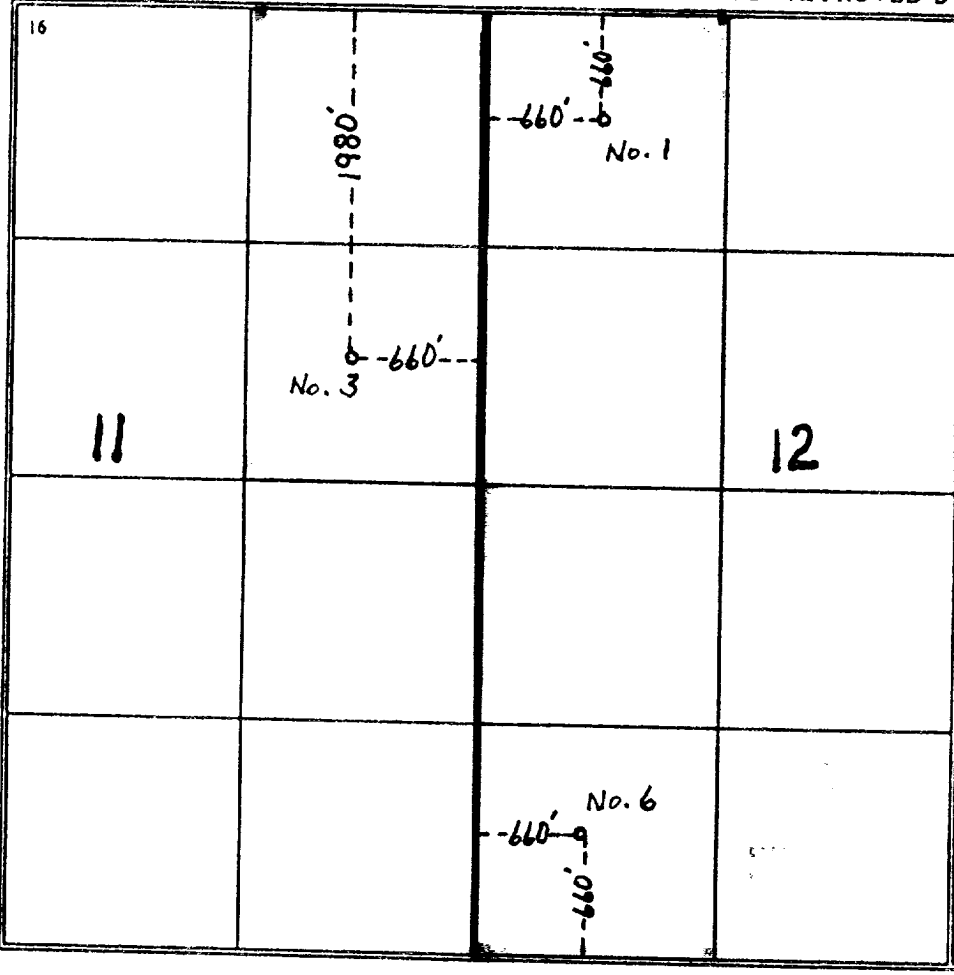
UL or lot no.	Section	Township	Range	Lot Ida	Feet from the	North/South line	Feet from the	East/West line	County
M	12	20S	36E		660	SOUTH	660	WEST	LEA

Bottom Hole Location If Different From Surface

UL or lot no.	Section	Township	Range	Lot Ida	Feet from the	North/South line	Feet from the	East/West line	County

Dedice Acres 240	Joint or Infill Y	Consolidation Code	Order No. R-573, NSL-3151A
---------------------	----------------------	--------------------	-------------------------------

NO ALLOWABLE WILL BE ASSIGNED TO THIS COMPLETION UNTIL ALL INTERESTS HAVE BEEN CONSOLIDATED OR A NON-STANDARD UNIT HAS BEEN APPROVED BY THE DIVISION



17 OPERATOR CERTIFICATION
 I hereby certify that the information contained herein is true and complete to the best of my knowledge and belief.

R.L. Wheeler Jr
 Signature
 R.L. WHEELER, JR.
 Printed Name
 ADMIN. SVC. COORD.
 Title
 1-20-95
 Date

18 SURVEYOR CERTIFICATION
 I hereby certify that the well location shown on this plat was plotted from field notes of actual surveys made by me or under my supervision, and that the same is true and correct to the best of my belief.

Date of Survey
 Signature and Seal of Professional Surveyer

Certificate Number

New Mexico Oil Conservation Division
C-102 Instructions

IF THIS IS AN AMENDED REPORT, CHECK THE BOX LABELED "AMENDED REPORT" AT THE TOP OF THIS DOCUMENT.

Surveyors shall use the latest United States government survey or dependent resurvey. Well locations will be in reference to the New Mexico Principal Meridian. If the land is not surveyed contact the appropriate OCD district office. Independent subdivision surveys will not be acceptable.

1. The OCD assigned API number for this well
2. The pool code for this (proposed) completion
3. The pool name for this (proposed) completion
4. The property code for this (proposed) completion
5. The property name (well name) for this (proposed) completion
6. The well number for this (proposed) completion
7. The operator's OGRID number
8. The operator's name
9. The ground level elevation of this well
10. The surveyed surface location of this well measured from the section lines. NOTE: If the United States government survey designates a Lot Number for this location use that number in the "UL or lot no." box. Otherwise use the OCD unit letter.
11. Proposed bottom hole location. If this is a horizontal hole indicate the location of the end of the hole.
12. The calculated acreage dedicated to this completion to the nearest hundredth of an acre
13. Put a Y if more than one completion will be sharing this same acreage or N if this is the only completion on this acreage
14. If more than one lease of different ownership has been dedicated to the well show the consolidation code from the following table:

C	Communitization
U	Unitization
F	Forced pooling
O	Other
P	Consolidation pending

NO ALLOWABLE WILL BE ASSIGNED TO THIS COMPLETION UNTIL ALL INTERESTS HAVE BEEN CONSOLIDATED OR A NON-STANDARD UNIT HAS BEEN APPROVED BY THE DIVISION

15. Write in the OCD order(s) approving a non-standard location, non-standard spacing, or directional or horizontal drilling

16. This grid represents a standard section. You may superimpose a non-standard section over this grid. Outline the dedicated acreage and the separate leases within that dedicated acreage. Show the well surface location and bottom hole location, if it is directionally drilled, with the dimensions from the section lines in the cardinal directions. (Note: A legal location is determined from the perpendicular distance to the edge of the tract.) If this is a high angle or horizontal hole show that portion of the well bore that is open within this pool.

Show all lots, lot numbers, and their respective acreage.

If more than one lease has been dedicated to this completion, outline each one and identify the ownership as to both working interest and royalty.

17. The signature, printed name, and title of the person authorized to make this report, and the date this document was signed.
18. The registered surveyors certification. This section does not have to be completed if this form has been previously accepted by the OCD and is being filed for a change of pool or dedicated acreage.