

**OIL CONSERVATION DIVISION**

P.O. Box 2088  
 Santa Fe, New Mexico 87504-2088

**DISTRICT I**  
 P.O. Box 1980, Hobbs, NM 88240

**DISTRICT II**  
 P.O. Drawer DD, Artesia, NM 88210

**DISTRICT III**  
 1000 Rio Brazos Rd., Aztec, NM 87410

**WELL LOCATION AND ACREAGE DEDICATION PLAT**

All Distances must be from the outer boundaries of the section

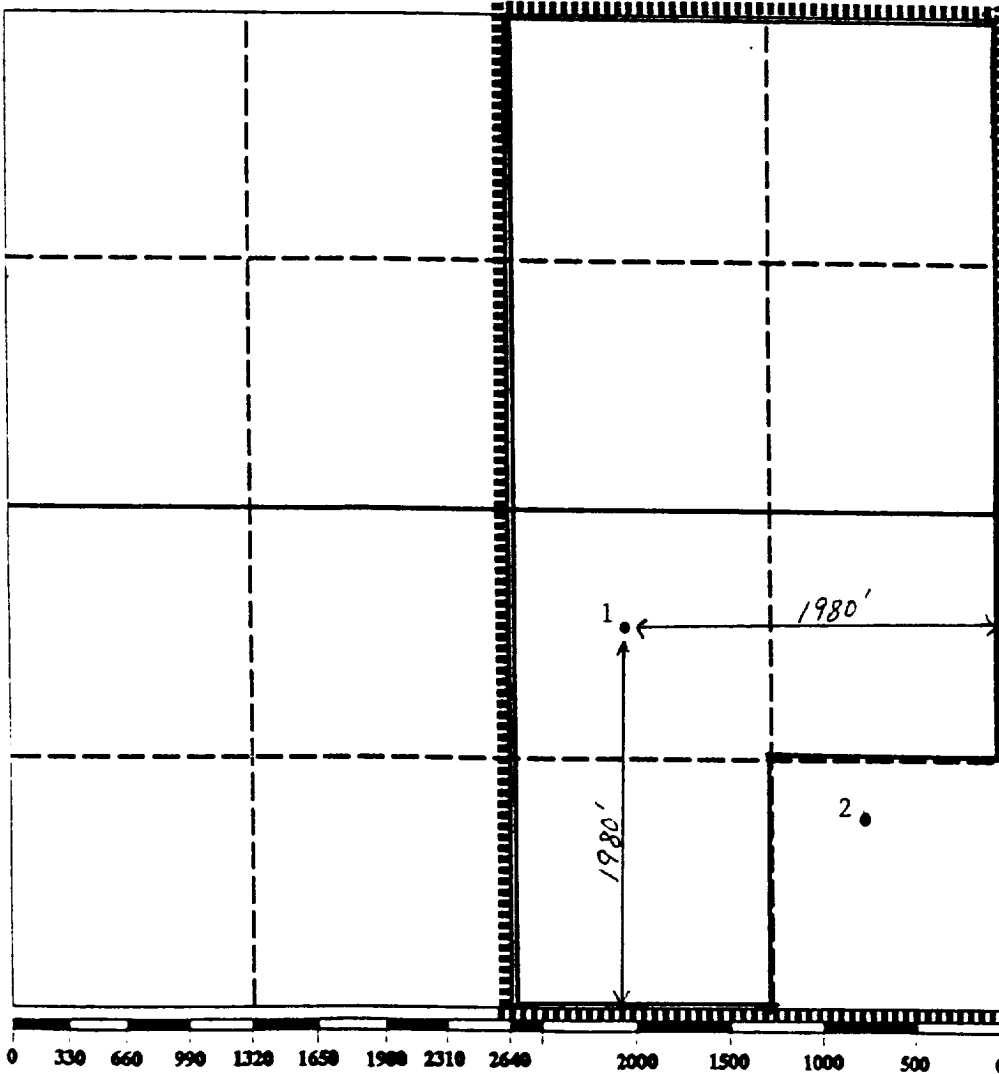
Operator Texaco Producing Inc.			Lease New Mexico "C" State NCT-6		Well No. 1
Unit Letter I	Section 6	Township 19S	Range 37E	County NMPM	
Actual Footage Location of Well:					
1980 feet from the South line and		1980 feet from the East line			
Ground level Elev. 3729	Producing Formation Penrose		Pool Eumont Yates 7 Rivers On (Gas)		Dedicated Acreage: 280 <sup>284</sup> Acres

- Outline the acreage dedicated to the subject well by colored pencil or hatchure marks on the plat below.
- If more than one lease is dedicated to the well, outline each and identify the ownership thereof (both as to working interest and royalty).
- If more than one lease of different ownership is dedicated to the well, have the interest of all owners been consolidated by communitization, unitization, force-pooling, etc.?
 

Yes     No    If answer is "yes" type of consolidation \_\_\_\_\_

If answer is "no" list the owners and tract descriptions which have actually been consolidated. (Use reverse side of this form if necessary.)

No allowable will be assigned to the well until all interests have been consolidated (by communitization, unitization, forced-pooling, or otherwise) or until a non-standard unit, eliminating such interest, has been approved by the Division.



**OPERATOR CERTIFICATION**

I hereby certify that the information contained herein is true and complete to the best of my knowledge and belief.

Signature: *Larry D. Ridenour*  
 Printed Name: Larry D. Ridenour  
 Position: Engineer's Assistant  
 Company: Texaco Producing Inc.  
 Date: 8-9-90

**SURVEYOR CERTIFICATION**

I hereby certify that the well location shown on this plat was plotted from field notes of actual surveys made by me or under my supervision, and that the same is true and correct to the best of my knowledge and belief.

Date Surveyed: \_\_\_\_\_  
 Signature & Seal of Professional Surveyor: \_\_\_\_\_  
 Certificate No.: \_\_\_\_\_