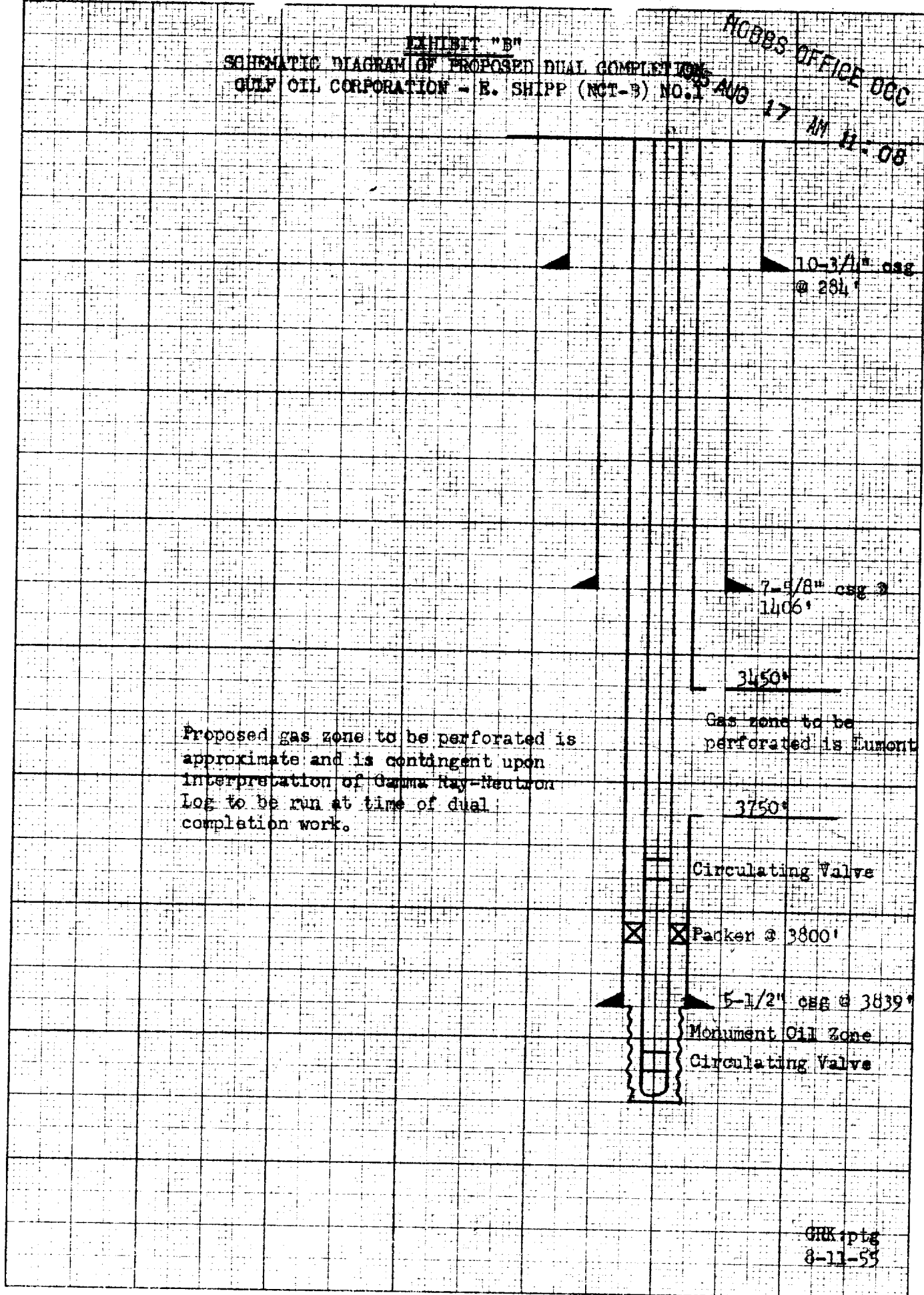


EXHIBIT "B"  
 SCHEMATIC DIAGRAM OF PROPOSED DUAL COMPLETION  
 GULF OIL CORPORATION - E. SHIPP (NCT-3) NO. 1

ROBBS OFFICE 000  
 AUG 17 AM 11.08



Proposed gas zone to be perforated is approximate and is contingent upon interpretation of Gamma Ray-Neutron Log to be run at time of dual completion work.

Gas zone to be perforated is Lument

3450'

3750'

Circulating Valve

Packer @ 3800'

5-1/2" CAS @ 3839'

Monument Oil Zone

Circulating Valve

GRK:ptg  
 8-11-55

20 X 20 TO THE INCH 359-101-6G