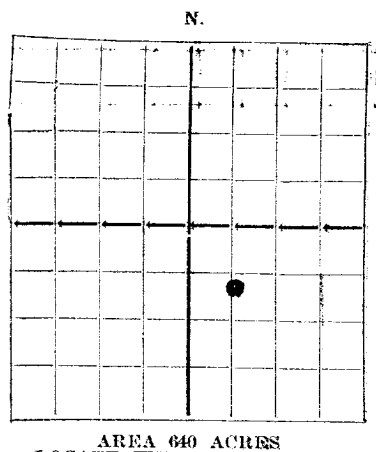


NEW MEXICO OIL CONSERVATION COMMISSION

Santa Fe, New Mexico



WELL RECORD

Mail to Oil Conservation Commission, Santa Fe, New Mexico, or its proper agent not more than twenty days after completion of well. Follow instructions in the Rules and Regulations of the Commission. Indicate questionable data by following it with (?). SUBMIT IN TRIPLICATE.

Company or Operator: Gulf Oil Corporation, Address: Tulsa, Oklahoma. Well No. 2 in NW SE of Sec. 17, T. 19S, R. 57E, N. M. P. M., Monument Field, Lea County. Well is 660 feet south of the North line and 1980 feet west of the East line of NW SE. If State land the oil and gas lease is No. A-1548 Assignment No. ...

OIL SANDS OR ZONES

No. 1, from 5740' to 4010' No. 4, from ... to ... No. 2, from Pay to 5880' No. 5, from ... to ... No. 3, from ... to ... No. 6, from ... to ...

IMPORTANT WATER SANDS

Include data on rate of water inflow and elevation to which water rose in hole. No. 1, from Rotary Hole to ... feet. No. 2, from ... to ... feet. No. 3, from ... to ... feet. No. 4, from ... to ... feet.

CASING RECORD

Table with columns: SIZE, WEIGHT PER FOOT, THREADS PER INCH, MAKE, AMOUNT, KIND OF SHOE, CUT & FILLED FROM, PERFORATED FROM TO, PURPOSE. Rows include 10-5/4, 7-5/8, 5-1/2 sizes.

MUDDING AND CEMENTING RECORD

Table with columns: SIZE OF HOLE, SIZE OF CASING, WHERE SET, NO. SACKS OF CEMENT, METHOD USED, MUD GRAVITY, AMOUNT OF MUD USED. Rows include 13-1/4, 9-7/8, 6-5/4 sizes.

PLUGS AND ADAPTERS

Heaving plug—Material Length Depth Set. Adapters—Material Size.

RECORD OF SHOOTING OR CHEMICAL TREATMENT

Table with columns: SIZE, SHELL USED, EXPLOSIVE OR CHEMICAL USED, QUANTITY, DATE, DEPTH SHOT OR TREATED, DEPTH CLEANED OUT. Rows include 4" size with Glycerin and Hydrochloric Acid treatments.

RECORD OF DRILL-STEM AND SPECIAL TESTS

If drill-stem or other special tests or deviation surveys were made, submit report on separate sheet and attach hereto.

TOOLS USED

Rotary tools were used from 0' feet to 4010' feet, and from ... feet to ... feet. Cable tools were used from ... feet to ... feet, and from ... feet to ... feet.

PRODUCTION

Put to producing July 16, 19 37. The production of the first 24 hours was 412 barrels of fluid of which ... % was oil; ... % emulsion; ... % water; and ... % sediment. Gravity, Be. If gas well, cu. ft. per 24 hours 892,000 Gallons gasoline per 1,000 cu. ft. of gas. Rock pressure, lbs. per sq. in.

EMPLOYEES

Driller Driller. Driller Driller.

FORMATION RECORD ON OTHER SIDE

I hereby swear or affirm that the information given herewith is a complete and correct record of the well and all work done on it so far as can be determined from available records.

Subscribed and sworn to before me this ... day of ... 19... Notary Public. My Commission expires March 16, 1940.

Tulsa, Oklahoma September 1, 1937. Name: [Signature] Position: General Superintendent. Representing: Gulf Oil Corporation. Address: Tulsa, Oklahoma.

FORMATION RECORD

FROM	TO	THICKNESS IN FEET	FORMATION
0'	150'		Surface soil
	248		Sand & surface shells
	456		Red bed
	951		Red bed & red rock
	1157		Red bed
	1514		Red bed, red rock & shells
	1570		Red bed & red rock
	1485		Anhydrite
	1760		Anhydrite & salt
	2244		Salt & shells
	2562		Salt
	2788		Anhydrite
	2865		Line
	2965		Broken anhydrite & lime
Total depth	4010		Line

Formation tops:

Anhydrite	1569'
Salt top	1470
Salt Base	2562
Brown lime	2805
Eunice USA	3740
Pay	3880