

DISTRICT I
P.O. Box 1980, Hobbs, NM 88240

OIL CONSERVATION DIVISION
P.O. Box 2088
Santa Fe, New Mexico 87504-2088

DISTRICT II
P.O. Denver DD, Artesia, NM 88210

DISTRICT III
1000 Rio Arriba Rd., Alamo, NM 87410

WELL API NO.	30-025-05674
5. Indicate Type of Lease	STATE <input checked="" type="checkbox"/> FEE <input type="checkbox"/>
6. State Oil & Gas Lease No.	B-2209-16

SUNDRY NOTICES AND REPORTS ON WELLS (DO NOT USE THIS FORM FOR PROPOSALS TO DRILL OR TO DEEPEN OR PLUG BACK TO A DIFFERENT RESERVOIR. USE "APPLICATION FOR PERMIT" (FORM C-101) FOR SUCH PROPOSALS.)	
1. Type of Well: OIL WELL <input checked="" type="checkbox"/> GAS WELL <input type="checkbox"/> OTHER <input type="checkbox"/>	7. Lease Name or Unit Agreement Name NORTH MONUMENT G/SA UNIT BLK 7
2. Name of Operator AMERADA HESS CORPORATION	8. Well No. 12
3. Address of Operator DRAWER D, MONUMENT, NEW MEXICO 88265	9. Foot name or Width EUNICE/MONUMENT G/SA
4. Well Location Unit Letter <u>L</u> : <u>1980</u> Feet From The <u>SOUTH</u> Line and <u>660</u> Feet From The <u>WEST</u> Line Section <u>21</u> Township <u>19S</u> Range <u>37E</u> NMPM LEA County	
10. Elevation (Show whether DF, RKB, RT, GR, etc.)	

11. Check Appropriate Box to Indicate Nature of Notice, Report, or Other Data

NOTICE OF INTENTION TO:		SUBSEQUENT REPORT OF:	
PERFORM REMEDIAL WORK <input type="checkbox"/>	PLUG AND ABANDON <input type="checkbox"/>	REMEDIAL WORK <input type="checkbox"/>	ALTERING CASING <input type="checkbox"/>
TEMPORARILY ABANDON <input type="checkbox"/>	CHANGE PLANS <input type="checkbox"/>	COMMENCE DRILLING OPNS. <input type="checkbox"/>	PLUG AND ABANDONMENT <input type="checkbox"/>
PULL OR ALTER CASING <input type="checkbox"/>		CASING TEST AND CEMENT JOB <input checked="" type="checkbox"/>	
OTHER: _____ <input type="checkbox"/>		OTHER: <u>Rep. csg. leak</u> Casing test. <input checked="" type="checkbox"/>	

12. Describe Proposed or Completed Operations (Clearly state all pertinent details, and give pertinent dates, including estimated date of starting any proposed work) SEE RULE 1103.

07-15-92 Thru 08-06-92

07-15-92: DA&S Well Service rigged up and pulled 153-3/4" rods and pump. Installed a BOP and picked up tbg. string. Tbg. was stuck. Worked tbg. up and down, pulled to 55,000#. Worked tbg. free. Pulled 24 jts. 2-3/8" tbg.

07-16-92: TOH w/the remaining 103 jts. 2-3/8" tbg. for a total of 127 jts. Ran a 4-3/4" bit on 88 jts. 2-3/8" tbg. Tagged up @ 2,680', suspect a salt ring. Pumped water down the 5-1/2" csg. and drilled out salt to 2,750'. Fell free and ran bit to 3,892' w/127 jts. tbg. Tagged up @ this point for 93' of fill. TOH w/tbg. and bit. Shut down to repair pulling - clutch worn out.

07-17-92: Ran a 5-1/2" 17# Baker loc-set RBP on 121 jts. 2-3/8" tbg. and set plug @ 3,720'. Star Tool broke circulation w/50 bbls. water and circulated 5-1/2" csg. clean w/100 bbls. fresh water. Pressured up on 5-1/2" csg. string to 600# - leaked off 300# in 30 sec.

(Continued On Back)

I hereby certify that the information above is true and complete to the best of my knowledge and belief.

SIGNATURE Terry L. Harvey TITLE Staff Assistant DATE 09-01-92

TYPE OR PRINT NAME Terry L. Harvey TELEPHONE NO. 505-393-2144

(This space for State Use)
ORIGINAL SIGNED BY JERRY SEXTON
DISTRICT I SUPERVISOR

APPROVED BY _____ TITLE _____ DATE SEP 17

CONDITIONS OF APPROVAL, IF ANY:

TOH w/tbg. and ran a 5-1/2" x 2-3/8" baker fullbore pkr. on 121 jts. 2-3/8" tbg. and set pkr. @ 3,711'. Pressure up on RBP to 1,500# - leaked off 40# in 5 mins. Tested csg. string up the hole to 2,261'. Tested above and below the pkr. to 600# - leaked off 300# in 5 min. Have not found top and bottom of leak. Shut down for repairs on clutch on pulling unit.

07-20-92: Ran a 5-1/2" x 2-3/8" baker fullbore pkr. on 121 jts. 2-3/8" tbg. and set pkr. @ 3,711'. Tested RBP @ 3,720' to 2,000# - Held OK. Pulled pkr. up the hole and tested csg. to 600#, found btm. of csg. - leak at 2,796'. Found top of leak at 1,545' for 1,251' of bad csg. Was unable to pump into leak. Btm. leaked off 120# in 7 min. Top leaked off 20# in 6 min. Csg. held ok above 1,545' and OK below 2,796'.

07-21-92: TOH w/tbg. and pkr. Dumped 3 sks. 12/20 sand on top of RBP @ 3,720'. Ran a 5-1/2" baker cup type RBP and a 5-1/2" x 2-3/8" baker fullbore pkr. Attempted to set RBP @ 2,648' w/86 jts. tbg. Set down 4,000# on B.P. Plug would not hold. Attempted to set plug @ 2,525' - 2,401' - 2,279' - 2,158' - 2,036' - 1,791' - 1,671' - Plug would not hold weight. Suspect bad csg. TOH to check RBP.

07-22-92: Ran 93 jts. 2-3/8" tbg. set OE @ 2,849'. Halliburton broke circulation w/3.5 bbls. water. Spotted 165 sks. micro-matrix cement over 5-1/2" csg. leaks from 2,849' to 1,322'. Pulled out of cement to 1,285'; reversed tbg. clean w/25 bbls. water. TOH w/tbg. Ran a 5-1/2" x 2-3/8" baker fullbore pkr. on 36 jts. 2-3/8" tbg. and set pkr. @ 1,113'. Pressured up on 5-1/2" csg. to 500#. Pressure up on tbg. to 1,500#. Displaced 1/2 bbls. Left 1,500# on tbg. and 500# on csg.

07-23-92 & 07-24-92: Closed in. Preparing to TOH w/pkr. and tbg. TIH w/bit, d.c.'s & tbg. and drill out cement plug.

07-27-92: TOH w/pkr. and tbg. Pick up bit and drill collars and TIH on 2-3/8" tbg. Tag top of cement plug at approx. 1,470'. (Drill out soft to 1,550', began drilling hard). Drill to 1,747'. Circulate hole clean.

07-28-92: Pressure up on 5-1/2" csg. to 530# - Held OK. Drilled hard cement from 1,747' to 2,017'. Circulated clean.

07-29-92: Drilled hard cement from 2,017' to 2,323'. Circulated clean, pulled bit off btm. Chaparral service cleaned the reverse pit and filled with clean water.

07-30-92: Drill out cement from 2,323' to 2,470', fell out of cement, began drilling out cement again at 2,537'. Drill out cement to 2,848'. (Drilling out cement plug complete). Perform casing integrity test from surface to 3,770'. Pressure casing to 590#. Lost 50# in 30 mins. Test OK.

07-31-92: TIH w/bit on tbg. Tag sand at 3,55'. Circ. sand off RBP. TOH w/bit and tbg. ND BOP. Replace tubing head. NU BOP. TIH w/tbg. to RBP @ 3,770'. RU air unit.

08-03-92: Finish rigging up air unit. RU blowdown tank. Circ. sand off RBP w/air. TOH w/RBP and tbg. TIH w/4-3/4" bit, drill collars and tbg. Tag fill @ 3,897'. Drill out to TD @ 3,985'. Pick up bit and tbg. Let open hole settle 30 min. Tag bottom @ 3,982'. Pull up hole w/bit and tbg. to approx. 3,670'.

08-04-92: Tag btm. @ 3,985' TD. TOH w/tbg., DC and bit. Laid down drill collars. Schlumberger ran a compensated neutron, gamma ray and collar log from 3,976' to 2,980'. TOH w/logging tools. ran 1 jt. 2-7/8" salta lined tbg. and 128 jts. 2-3/8" tbg. for a total of 129 jts. set OE @ 3,960;, sn @ 3,959', baker TAC @ 3,645' w/14,000# tension. Ran a 20-150-RWBC-10-3-S-0 Pump #A-4401 on 157-3/4" plain rods. Loaded tbg. w/10 bbls. water and checked pump action.

08-05-92: Installed wellhead connections, started engine and checked pump action.

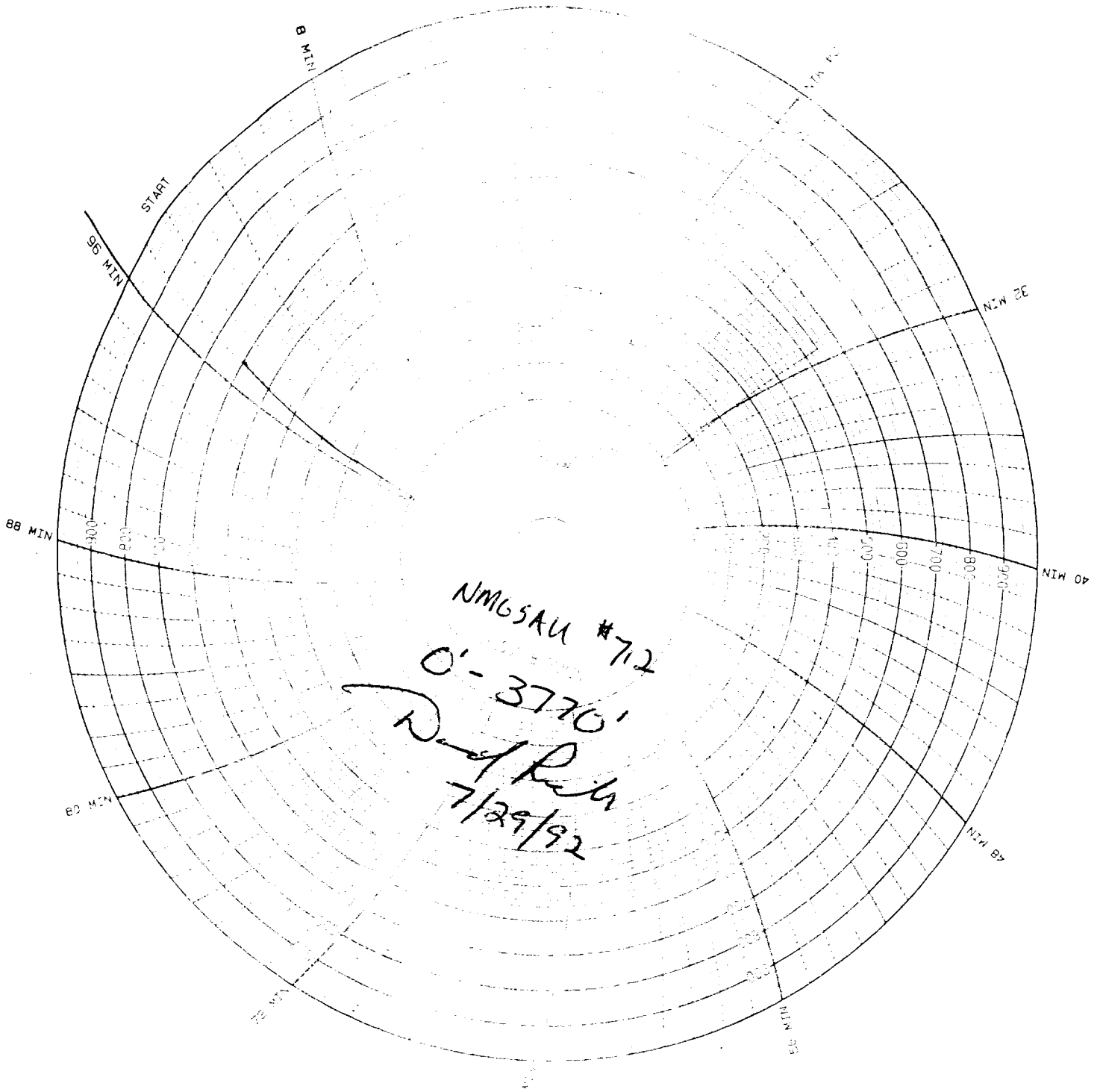
08-06-92: Repaired pumping unit and started well pumping.

24 Hour Test (08-06-92): 3 BOPD, 30 BWPD.

RECEIVED

SEP 16 1992

OCD HOBBS OFFICE



NM65AU #712

0'-3770'

Rund Ruck

7/29/92

RECEIVED
SEP 18 1992
OOD HOBBS OFFICE