

NEW MEXICO OIL CONSERVATION COMMISSION  
Santa Fe, New Mexico

Form C-101  
Revised (12/1/55)

## NOTICE OF INTENTION TO DRILL

Notice must be given to the District Office of the Oil Conservation Commission and approval obtained before drilling or recompletion begins. If changes in the proposed plan are considered advisable, a copy of this notice showing such changes will be returned to the sender. Submit this notice in QUINTUPLICATE. One copy will be returned following approval. See additional instructions in Rules and Regulations of the Commission. If State Land submit 6 Copies Attach Form C-128 in triplicate to first 3 copies of form C-101

Midland, Texas  
(Place)

April 29, 1957  
(Date)

OIL CONSERVATION COMMISSION  
SANTA FE, NEW MEXICO

Gentlemen:

You are hereby notified that it is our intention to commence the Drilling of a well to be known as  
Humble Oil & Refining Company Co. Lse. No. 47472

(Company or Operator)

New Mexico State "AT"  
(Lease)

Well No. 2, in "K" (Unit) The well is

located 2086 feet from the South line and 1874 feet from the West line of Section 26, T. 19-S, R. 37-E, NMPM.

(GIVE LOCATION FROM SECTION LINE)

Fumont Pool, Lea County

If State Land the Oil and Gas Lease is No. State B - 2737

If patented land the owner is

Address

We propose to drill well with drilling equipment as follows: Rotary

The status of plugging bond is on file in Commission office

Drilling Contractor Gackle Drilling Company

We intend to complete this well in the Queen Sand formation at an approximate depth of 4050 feet.

See Attached Plats

### CASING PROGRAM

We propose to use the following strings of Casing and to cement them as indicated:

Size of Hole	Size of Casing	Weight per Foot	New or Second Hand	Depth	Sacks Cement
11"	8 5/8"	24#	New	300'	150 sks. *
7 7/8"	5 1/2"	14#	New	3950'	700 sks. **

If changes in the above plans become advisable we will notify you immediately.

ADDITIONAL INFORMATION (If recompletion give full details of proposed plan of work.)

\* Circulate to surface

\*\* Circulate to 8 5/8" casing.

Approved \_\_\_\_\_, 19\_\_\_\_  
Except as follows:

Sincerely yours,

Humble Oil & Refining Company  
(Company or Operator)

By [Signature]

Position Div. Chief Clerk

Send Communications regarding well to

Name L. H. Byrd

Address Box 1600 Midland, Texas

OIL CONSERVATION COMMISSION

By [Signature]

NEW MEXICO  
OIL CONSERVATION COMMISSION

Form C-128

Well Location and/or Gas Proration Plat

Date 4-20-57

Operator HUMBLE OIL & REFINING CO. Lease NEW MEXICO STATE "AT"

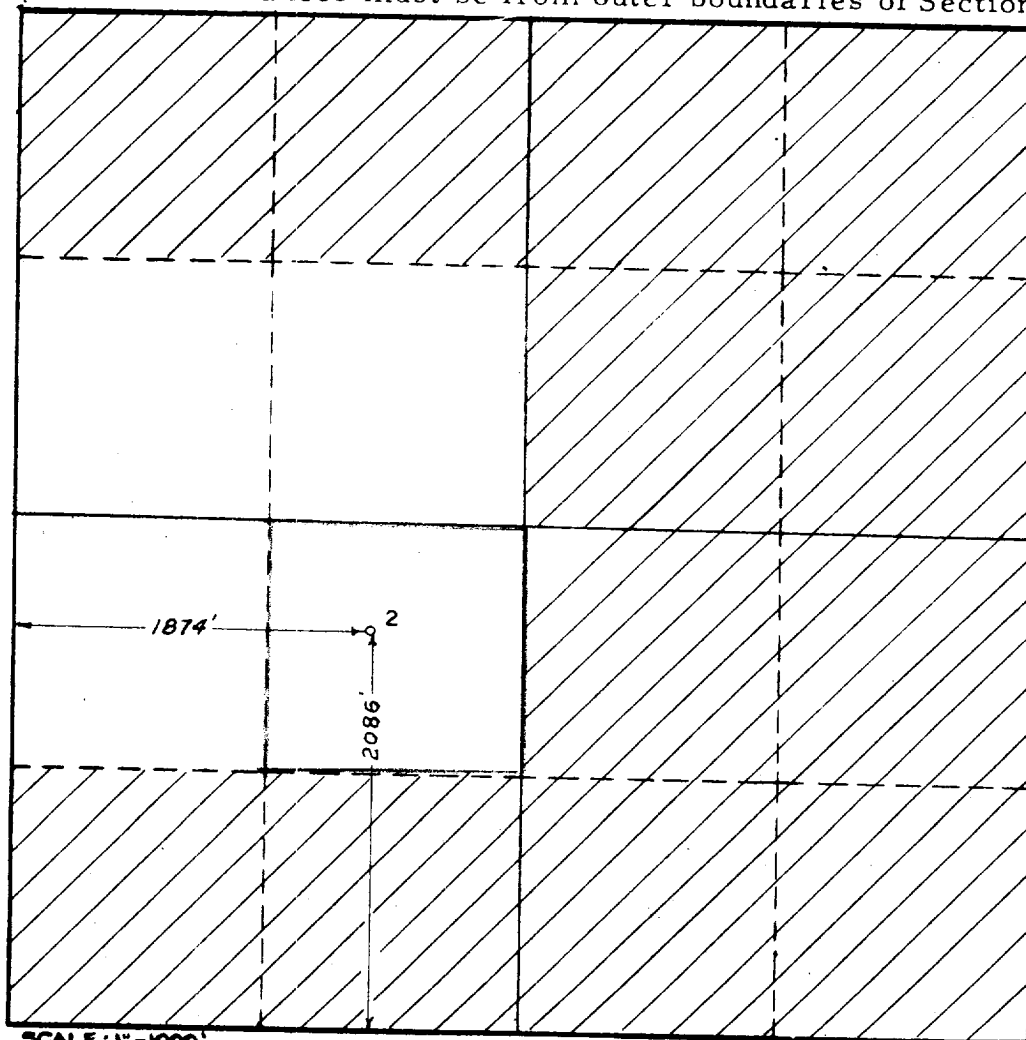
Well No. 2 Section 26 Township 19-S Range 37-E NMPM

Located 2086 Feet From SOUTH Line, 1874 Feet From WEST Line,

LEA County, New Mexico. G. L. Elevation \_\_\_\_\_

Name of Producing Formation QUEEN Pool EUMONT Dedicated Acreage 40

(Note: All distances must be from outer boundaries of Section)



SCALE: 1"=1000'

Is this Well a Dual Comp.? Yes      No     

If the answer to Question 1 is yes, are there any other dually completed wells within the dedicated acreage? Yes      No     

Name E. T. Shahan  
Position ASSISTANT DIVISION SUPERINTENDENT  
Representing HUMBLE OIL & REFINING CO.  
Address BOX 1600 MIDLAND, TEXAS

This is to certify that the above plat was prepared from field notes of actual surveys made by me or under my supervision and that the same are true and correct to the best of my knowledge and belief.

Date Surveyed 4-19-57

E. T. Shahan  
Registered Professional Engineer and/or  
Land Surveyor

LEASE NO 47472

W-A-2306