

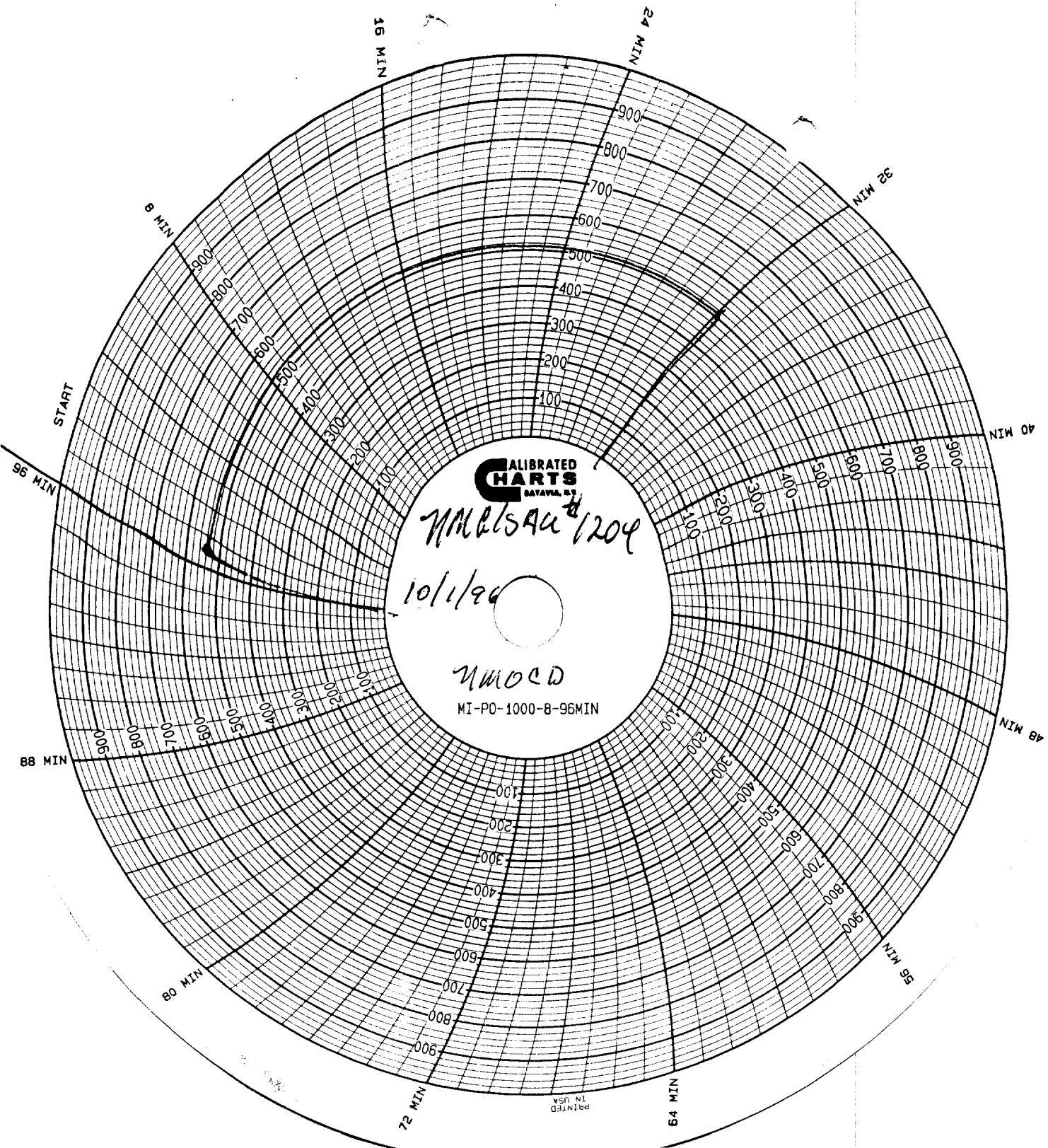
STUCK. HAVE 3 D.C.'S IN THE HOLE & BIT STUCK @ 68'. ATTEMPTED TO WORK THE BIT FREE W/NO RESULTS. RAN A BUMPER SUB ON 1 4-3/4" D.C. BUMPED DWN. ON THE STUCK BIT & KNOCKED THE BIT FREE. TOH W/D.C.'S & BIT. LEFT THE PIN IN THE HOLE. RAN A 6" MAGNET ON 115 JTS. OF TBG. TO THE CIBP @ 3,596'. TOH W/TBG. & MAGNET. DID NOT RECOVER PIN. RAN A PKR. ON 114 JTS. OF TBG. SET THE PKR. @ 3,583'. PRESS'D UP ON THE CIBP TO 1,000#. HELD OK. TST'D. THE CSG. STRING & FOUND A LEAK BETWEEN 2,363'-2,394'. THE CSG. BELOW 2,394' & ABOVE 2,363' TST'D. OK. ESTABLISHED A RATE INTO THE LEAK @ 2.5 BPM & 800#. TOH W/TBG. & PKR. RAN A CMT. RETAINER ON 73 JTS. OF TBG. TO 2,296'. PUMPED THRU THE RETAINER W/15 BBLs. WATER. SET THE RETAINER @ 2,296' & TST'D. THE TBG. TO 1,500#. HALLIBURTON PUMPED 20 BBLs. FW INTO THE CSG. LEAK @ 2 BPM & 900# TO EST. A RATE. CMT. SQZ'D. THE CSG. LEAK W/200 SKS. OF PREMIUM PLUS CMT. W/2% CALCIUM CHLORIDE & 1/4 LB. /SK. OF FLOCEL @ 2 BPM. MAX. PRESS.-1,700# & MIN. PRESS.-400#. DISPLACED W/12.5 BBLs. FW. PULLED OUT OF THE RETAINER & REVERSED OUT W/15 BBLs. FW. TOH W/TBG. RAN A BIT ON D.C.'S & 66 JTS. OF TBG. TO 2,256'. WOC. TAGGED UP @ 2,294'. DRLD. CMT. TO 2,296'. DRLD. OUT THE CMT. RETAINER @ 2,296' & CMT. TO 2,374'. RAN THE BIT TO 2,441' & CIRC. CLEAN. TST'D. THE CSG. TO 500#. THE PRESS. INC. TO 620# IN 4 MINS. OPENED THE CSG. TO THE PIT & FLOWED BACK BRINE WATER FOR 2 HRS. & DIED. TOH W/TBG., D.C.'S & BIT. RAN A PKR. ON 73 JTS. TBG. & SET THE PKR. @ 2,301'. STAR TOOL PUMPED FW INTO CSG. LEAK @ 2,374' @ 2.3 BPM & 1,200#. TST'D. THE CSG. ABOVE & BELOW THE LEAK TO 540#. HELD OK. TOH W/TBG. & PKR. RAN A CMT. RETAINER ON 73 JTS. TBG. PUMPED THRU THE RETAINER W/FW. SET THE RETAINER @ 2,297' & EST. A RATE INTO THE CSG. LEAK @ 2.25 BPM & 1,200#. HALLIBURTON PRESS'D. UP ON THE 7" CSG. ABOVE THE CMT. RETAINER TO 500# & PUMPED A 5 BBL. FW PAD DWN. THE TBG. PUMPED 70 SKS. OF PREMIUM PLUS CMT. W/.5% VERSASET & 1% CALCIUM CHLORIDE. TAILED IN W/30 SKS. OF PREMIUM PLUS CMT. SQZ'D. THE CSG. LEAK @ 2,374' @ 2 BPM. MAX. PRESS.-1,300# & MIN. PRESS.-600#. DISPLACED W/12.5 BBLs. FW. STUNG OUT OF THE CMT. RETAINER, WASHED UP & REVERSED OUT. TOH W/TBG. RAN A BIT, D.C.'S & 66 JTS. TBG. LEFT THE BIT SWINGING @ 2,271'. RAN THE BIT & TAGGED UP @ 2,295'. BROKE CIRC. & DRLD. 2' OF CMT. TO THE RETAINER @ 2,297'. DRLD. OUT THE CMT. RETAINER & FAIR CMT. TO 2,351'. THE CMT. WAS NOT HARD. PULL THE BIT TO 2,345' & CIRC. CLEAN. DRLD. HARD CMT. FR. 2,351'-2,365' & FELL FREE. DRLD. STRINGERS TO 2,409' & CIRC. CLEAN. TST'D. THRU 7" CSG. STRING TO 560# FOR 33 MINS. HELD. TOH W/TBG., D.C.'S & BIT. RMV'D. BOP & RAN SPEER INTO 7" CSG. PULLED 90,000#. TST'D. INT. CSG. FOR LEL & H2S TO CHG. OUT WELLHEAD. COULD NOT CHG. OUT WELLHEAD. RMV'D. SPEER & INSTALLED BOP. SCHLUMBERGER RAN CMT. BOND LOG FR. 1,500' TO SURF. & FOUND FREE PIPE. SHOT 4 HOLES @ 1,428', 50' BELOW 9-5/8" INT. SHOE. TIH W/PKR. ON 44 JTS. TBG. & SET PKR. @ 1,389'. STAR TOOL ATTEMPTED TO BREAK CIRC. THRU THE SHOT HOLES W/75 BBLs. WATER. DID NOT GET CIRC. OUT 9-5/8" INT. CSG. ATTEMPTED TO CIRC. OUT THE INT. CSG. W/75 BBLs. FW. DID NOT BREAK CIRC. TOH W/TBG. & PKR. RAN A CMT. RETAINER ON 43 JTS. TBG. TO 1,354'. PUMPED THRU THE RETAINER W/15 BBLs. FW, SET THE RETAINER & EST. A RATE INTO THE SHOT HOLES @ 2 BPM & 800#. HALLIBURTON PUMPED 70 SKS. OF PREMIUM PLUS CMT. W/.5% VERSASET & 1% CALCIUM CHLORIDE. TAILED IN W/30 SKS. OF PREMIUM PLUS CMT. SQZ'D. THE SHOT HOLES @ 1,428' @ 2 BPM. MAX. PRESS.-1,200# & MIN. PRESS.-1,000#. STUNG OUT OF THE RETAINER & WASHED UP. REVERSED OUT W/20 BBLs. FW. PUMPED 84 SKS. INTO THE FORMATION. TST'D. THE INT. CSG. FOR H2S & LEL TST'D. OK. RMV'D. THE OLD WH & INSTALLED A NEW ONE. INSTALLED THE BOP. RAN A BIT ON 6 D.C.'S & TBG. TAGGED UP @ 1,349'. BROKE CIRC. & DRLD. 2' OF CMT. TO 1,351'. DRLD. 1' ON THE CMT. RETAINER TO 1,352'. CIRC. CLEAN. DRLD. OUT THE CMT. RETAINER @ 1,351' & HARD CMT. TO 1,433'. FELL FREE. DRLD. STRINGERS TO 1,450' & CIRC. CLEAN. PRESS'D. UP ON THE 7" CSG. STRING TO 540# FOR 32 MINS. HELD OK. NOTE: THE WELL PASSED THE CSG. INTEGRITY TST. CHART TO THE NMOCD. TOH W/THE TBG. D.C.'S & BIT. RAN A SHOE W/A 6-1/4" KUTRITE ON THE BTM. ON 6 D.C.'S & 109 JTS. OF TBG. TAGGED UP @ 3,586', BROKE CIRC. & WASHED DWN. TO 3,596'. DISPLACED THE HOLE W/130 BBLs. OF FW. CUT OVER CMT. FR. 3,596'-3,601', CUT OVER THE CIBP @ 3,601', RAN THE SHOE TO 3,911' & TAGGED UP. CIRC. CLEAN, PULLED 8 JTS. OF TBG. & LEFT THE SHOE SWINGING @ 3,633'. TAGGED BTM. @ 3,911', BROKE CIRC. & DRLD. 2', SET DWN. THE TBG. WGT. ON THE SHOE & PLUGGED THE TBG. TOH W/TBG., D.C.'S & SHOE. RCV'D. THE PIN OUT OF THE SLIPS & THE BTM. END OF THE CIBP & OTHER JUNK THAT WAS STUCK INSIDE THE SHOE. RAN A BIT ON D.C.'S & 119 JTS. OF

CONTINUED

TBG., TAGGED UP @ 3,913', BROKE CIRC. & DRLD. OUT FORMATION TO 3,940'. AT 3,940' THE BIT STOPPED MAKING ANY HOLE. STARTED RECOVERING METAL, WIRE, & RUBBER. MADE APPROX. 8" IN 2 HOURS. TOH W/TBG., D.C.'S & BIT. FOUND SOME TEETH GONE OFF THE INSIDE OF THE BIT CONES. SUSPECT JUNK IN THE HOLE. RAN A SHOE W/A KUTRITE ON THE BTM. ON 6 D.C.'S & 119 JTS. OF TBG. TAGGED BTM. @ 3,941'. BROKE CIRC. W/100 BBLs. FW. CUT OVER THE JUNK TO 3,943' & THE SHOE STARTED STICKING & THE TBG. PLUGGED. TOH W/TBG., D.C.'S & SHOE. RCV'D. WHAT LOOKS LIKE THE TOP OF A SAND PUMP OR DUMP BAILER 4-7/8" x 18" LONG. RAN A NEW SHOE & TAGGED UP @ 3,943'. BROKE CIRC. W/80 BBLs. FW, CUT OVER THE JUNK TO 3,945', TBG. PLUGGED & LOST CIRC. PULLED THE SHOE TO 3,632'. PUMPED 250 BBLs. FW & BROKE CIRC. TAGGED UP ON THE JUNK @ 3,945'. CUT OVER THE JUNK TO 3,955'. RCV'D. FORMATION & STEEL CUTTINGS. TOH W/THE TBG., D.C.'S & SHOE. RAN A 5-3/4" SHOE W/A 6-1/4" KUTRITE OD & 4-3/4" I.D., 1 JT. 5-3/4" WASH PIPE, 1 SET OF 4-3/4" JOHNSON JARS, 6 4-3/4" DRILL COLLARS & 119 JTS. OF TBG. TAGGED UP @ 3,945', BROKE CIRC. W/FW & CUT OVER THE FISH TO 3,958' FOR 13'. HAVE CUT A 4-3/4" FISHING NECK ON THE JUNK. RECOVERING ALOT OF FORMATION. HAVING TROUBLE W/THE SHOT HOLE CAVING IN. HAVING TO WASH OVER SOME OF THE SAME HOLE EACH TIME WE PICK UP OFF THE FISH. CIRC. CLEAN & PULLED THE SHOE UP INTO THE CSG. RAN 11 JTS. OF TBG. & TAGGED UP @ 3,955'. BROKE CIRC. W/100 BBLs. FW. CUT ON THE JUNK W/THE SHOE FOR 2 HRS. DID NOT MAKE ANY HOLE. TOH W/THE TBG. & SHOE. FOUND THE SHOE WAS WORN OUT. TIH W/A NEW SHOE W/6-1/4" KUTRITE OD & 4-7/8" ID ON 1 JT. OF 5-3/4" WASH PIPE, 1 SET OF 4-3/4" JARS, 6 4-3/4" DRILL COLLARS & 120 JTS. OF TBG. TAGGED UP @ 3,955', BROKE CIRC. & CUT OVER THE JUNK TO 3,973'. RCV'D. FORMATION, RUBBER & STEEL CUTTINGS. CIRC. CLEAN & PULLED THE SHOE UP INTO THE CSG. RAN 11 JTS. TBG. & TAGGED UP @ 3,973'. BROKE CIRC. W/FW. CUT OVER THE JUNK TO TD @ 3,978' & CIRC. CLEAN. TOH W/TBG., WASH PIPE & SHOE. RCV'D. APPROX. 25' OF THE BARREL OF A DRILLING BAILER. RAN A SHOE W/KUTRITE OD & 4-7/8" ID ON 1 JT. OF WASH PIPE, 1 SET OF 4-3/4" JARS, 6 4-3/4" D.C.'S, & 120 JTS. TBG. TAGGED BTM. @ 3,978' & PULLED THE SHOE BACK UP INTO THE CSG. THE SHOE DRUG FOR ABOUT 45' IN THE O.H. SUSPECT SOME MORE JUNK LEFT IN THE HOLE. TAGGED UP W/THE SHOE @ 3,976'. CUT OVER THE JUNK TO 3,979'. THE SHOE PLUGGED & LOST CIRC. TOH W/THE SHOE & WASH PIPE. RCV'D THE BTM. OF THE BAILER. HAVE RCV'D. ALL OF THE JUNK FR. THE O.H. SCHLUMBERGER LOGGED THE O.H. FR. 3,961' TO 3,722' W/A SONIC, GAMMA RAY, NEUTRON & CCL. RAN A SONIC HAMMER ON 116 JTS. OF TBG. TO 3,641'. RAN THE SONIC HAMMER TO TD @ 3,978'. KNOX SVCS. PUMPED 50 BBLs. FW @ 5 BPM & 1,250#. WASHED THE O.H. FR. 3,923'-3,978' W/THE SONIC HAMMER. PUMPED 40 BBLs. FW @ 4.9 BPM & 1,350#. WASHED THE O.H. 3,856'-3,923'. PUMPED 40 BBLs. FW @ 4.9 BPM & 1,550#. WASHED THE O.H. FR. 3,793'-3,856'. PUMPED 20 BBLs. FW @ 4.9 BPM & 1,600#. WASHED THE O.H. FR. 3,722'-3,793'. ACIDIZED THE O.H. FR. 3,722'-3,978' W/5,000 GALS. OF 15% NEFE ACID W/1.5% DP-77MX CHEMICAL @ 4.3 AVG. BPM & 1,585#. WASHED THE O.H. W/ACID IN THE SAME 4 STGS. AS ABOVE W/THE SONIC HAMMER. FLUSHED W/22 BBLs. FW & PULLED THE TOOL TO 3,730'. SWABBED WELL. WASHED THE SWAB FREE BUT PULLED THE RUBBER OFF OF ONE SWAB CUP. WAS UNABLE TO GET BACK DWN. W/THE SWAB. TOH W/THE TBG. TO RECOVER THE RUBBER OFF THE SWAB CUP. TIH W/119 JTS. TBG. & SET O.E. @ 3,730'. RAN A NEW ROPE SOCKET. SWABBED WELL. TOH W/TBG. LAID DWN. THE 6 4-3/4" D.C.'S. RAN A 2-3/8" SN, 1 JT. OF 2-7/8" IPC TBG., 8 JTS. OF 2-7/8" TBG., A 7" x 2-7/8" TAC & 117 JTS. OF 2-7/8" TBG. FOR A TOTAL OF 126 JTS. SET THE SN OE @

3,954' WITH THE TAC @ 3,673' W/18,000# TENSION. RAN A
20-120-rwbc-12-3-S-0 PUMP #A-4410 ON 6 1-1/2" K-Bars, 101-3/4"
PLAIN RODS & 49-7/8" PLAIN RODS. STAR TOOL LOADED THE TBG. W/18
BBLS. FRESH WATER & CHK'D. THE PUMP ACTION. RDMO. CLEANED THE
LOCATION. CHG'D. THE STATUS FR. A PA'D WELL TO A PUMPING WELL.
Well closed in fr. 10-18 thru 10-26-79. 10-27-96: Set pumping unit
& motor & began pumping well to NMGSAU Battery No. 48. Connected
to Warren Petroleum Gas Meter No. 60022 at battery.

Test of 10-30-96: Pumped 14 b.o., 101 b.w., & 23 MCFGPD in 24 hours.



CALIBRATED
CHARTS
DATA, NY

7MRL/SA 1204

10/1/96

7MOC D

MI-PO-1000-8-96MIN

PRINTED
IN USA

Mucals Hc # 1204
Cep. Intensity test
10/1/96
Doc Shuler
AHC