

DISTRICT I

1625 N. French Dr., Hobbs, NM 88240

DISTRICT II

811 S. First, Artesia, NM 88210

DISTRICT III

1000 Rio Brazos Rd., Aztec, NM 87410

OIL CONSERVATION DIVISION

1220 South St. Francis Dr.
Santa Fe, NM 87504

WELL API NO. 30-025-05901
5. Indicate Type of Lease STATE <input type="checkbox"/> FEE <input checked="" type="checkbox"/>
6. State Oil / Gas Lease No.
7. Lease Name or Unit Agreement Name E. S. Adkins
8. Well No. 1
9. Pool Name or Wildcat Eunice Monument G/SA
10. Elevation (Show whether DF, RKB, RT,GR, etc.) 3565' DF

SUNDRY NOTICES AND REPORTS ON WELLS
(DO NOT USE THIS FORM FOR PROPOSALS TO DRILL OR TO DEEPEN OR PLUG BACK TO A DIFFERENT RESERVOIR. USE "APPLICATION FOR PERMIT" (FORM C-101) FOR SUCH PROPOSALS.)

1. Type of Well OIL WELL GAS WELL OTHER TA'd Well.

2. Name of Operator
Amerada Hess Corporation

3. Address of Operator
P.O. Box 840, Seminole, TX 79360

4. Well Location
Unit Letter M : 660 Feet From The South Line and 660 Feet From The West Line
Section 5 Township 020S Range 037E NMPM LEA COUNTY

11. Check Appropriate Box to Indicate Nature of Notice, Report, or Other Data

NOTICE OF INTENTION TO:	SUBSEQUENT REPORT OF:
PERFORM REMEDIAL WORK <input type="checkbox"/>	REMEDIAL WORK <input type="checkbox"/>
TEMPORARILY ABANDON <input type="checkbox"/>	ALTERING CASING <input type="checkbox"/>
PULL OR ALTER CASING <input type="checkbox"/>	COMMENCE DRILLING OPERATIONS <input type="checkbox"/>
OTHER: <input type="checkbox"/>	CASING TEST AND CEMENT JOB <input type="checkbox"/>
PLUG AND ABANDON <input type="checkbox"/>	PLUG AND ABANDONMENT <input type="checkbox"/>
CHANGE PLANS <input type="checkbox"/>	OTHER: <input checked="" type="checkbox"/> Casing Integrity Test.

12. Describe Proposed or Completed Operations (Clearly state all pertinent details, and give pertinent dates, including estimated date of starting any proposed work) SEE RULE 1103.

2-6-2001

Press. tested csg. to 540 PSI for 30 min. Held OK. Chart attached.

Amerada Hess Corporation respectfully request a continued TA'd status on well while evaluating for future work.

This Approval of Temporary Abandonment Expires 2/13/06

I hereby certify that the information above is true and complete to the best of my knowledge and belief.

SIGNATURE Roy L. Wheeler, Jr. TITLE Bus. Svc. Spec. II DATE 02/09/2001

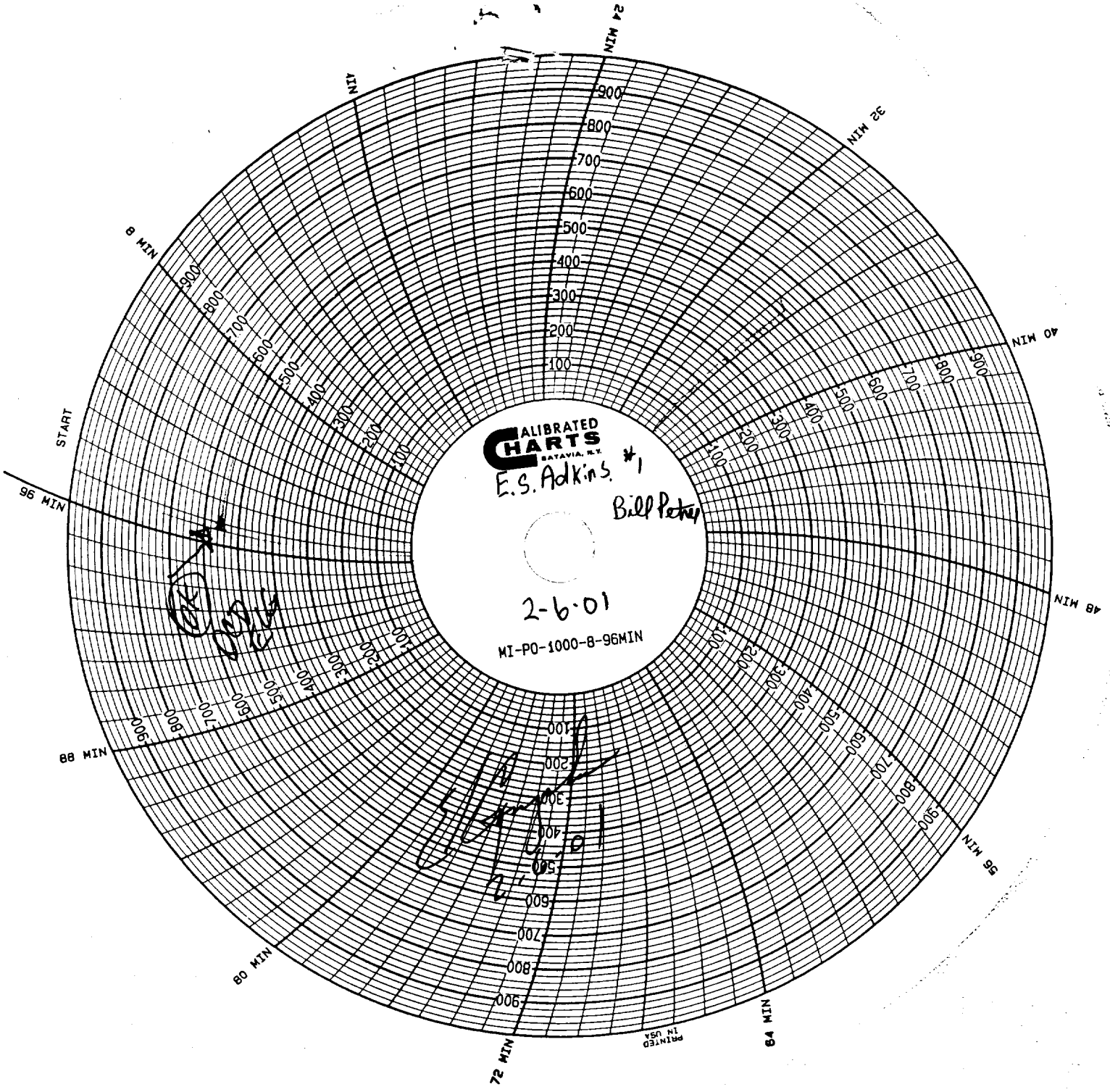
TYPE OR PRINT NAME Roy L. Wheeler, Jr. TELEPHONE NO. 915-758-6778

(This space for State Use)

APPROVED BY _____ TITLE ORIGINAL DATE _____

CONDITIONS OF APPROVAL, IF ANY: CARRY WELL HELD

JCBS



24 MIN

32 MIN

40 MIN

48 MIN

56 MIN

64 MIN

72 MIN

80 MIN

88 MIN

96 MIN

PRINTED IN USA

CALIBRATED CHARTS

E.S. Adkins #1

Bill Peter

2-6-01

MI-PO-1000-8-96MIN

8 MIN

16 MIN

24 MIN

32 MIN

40 MIN

48 MIN

56 MIN

64 MIN

72 MIN

80 MIN

88 MIN

96 MIN

PRINTED IN USA

CALIBRATED CHARTS

E.S. Adkins #1

Bill Peter

2-6-01

MI-PO-1000-8-96MIN

8 MIN

16 MIN

24 MIN

32 MIN

40 MIN

48 MIN

56 MIN

64 MIN

72 MIN

80 MIN

88 MIN

96 MIN

PRINTED IN USA

CALIBRATED CHARTS

E.S. Adkins #1

Bill Peter

2-6-01

MI-PO-1000-8-96MIN

8 MIN

16 MIN

24 MIN

32 MIN

40 MIN

48 MIN

56 MIN

64 MIN

72 MIN

80 MIN

88 MIN

96 MIN

PRINTED IN USA

CALIBRATED CHARTS

E.S. Adkins #1

Bill Peter

2-6-01

MI-PO-1000-8-96MIN

8 MIN

16 MIN

24 MIN

32 MIN

40 MIN

48 MIN

56 MIN

64 MIN

72 MIN

80 MIN

88 MIN

96 MIN

PRINTED IN USA

CALIBRATED CHARTS

E.S. Adkins #1

Bill Peter

2-6-01

MI-PO-1000-8-96MIN

8 MIN

16 MIN

24 MIN

32 MIN

40 MIN

48 MIN

56 MIN

64 MIN

72 MIN

80 MIN

88 MIN

96 MIN

PRINTED IN USA

CALIBRATED CHARTS

E.S. Adkins #1

Bill Peter

2-6-01

MI-PO-1000-8-96MIN

8 MIN

16 MIN

24 MIN

32 MIN

40 MIN

48 MIN

56 MIN

64 MIN

72 MIN

80 MIN

88 MIN

96 MIN

PRINTED IN USA

CALIBRATED CHARTS

E.S. Adkins #1

Bill Peter

2-6-01

MI-PO-1000-8-96MIN

8 MIN

16 MIN

24 MIN

32 MIN

40 MIN

48 MIN

56 MIN

64 MIN

72 MIN

80 MIN

88 MIN

96 MIN

PRINTED IN USA

CALIBRATED CHARTS

E.S. Adkins #1

Bill Peter

2-6-01

MI-PO-1000-8-96MIN

8 MIN

16 MIN

24 MIN

32 MIN

40 MIN

48 MIN

56 MIN

64 MIN

72 MIN

80 MIN

88 MIN

96 MIN

PRINTED IN USA

CALIBRATED CHARTS

E.S. Adkins #1

Bill Peter

2-6-01

MI-PO-1000-8-96MIN

8 MIN

16 MIN

24 MIN

32 MIN

40 MIN

48 MIN

56 MIN

64 MIN

72 MIN

80 MIN

88 MIN

96 MIN

PRINTED IN USA

CALIBRATED CHARTS

E.S. Adkins #1

Bill Peter

2-6-01

MI-PO-1000-8-96MIN

8 MIN

16 MIN

24 MIN

32 MIN

40 MIN

48 MIN

56 MIN

64 MIN

72 MIN

80 MIN

88 MIN

96 MIN

PRINTED IN USA

CALIBRATED CHARTS

E.S. Adkins #1

Bill Peter

2-6-01

MI-PO-1000-8-96MIN

8 MIN

16 MIN

24 MIN

32 MIN

40 MIN

48 MIN

56 MIN

64 MIN

72 MIN

80 MIN

88 MIN

96 MIN

PRINTED IN USA

CALIBRATED CHARTS

E.S. Adkins #1

Bill Peter

2-6-01

MI-PO-1000-8-96MIN

8 MIN

16 MIN

24 MIN

32 MIN

40 MIN

48 MIN

56 MIN

64 MIN

72 MIN

80 MIN

88 MIN

96 MIN

PRINTED IN USA

CALIBRATED CHARTS

E.S. Adkins #1

Bill Peter

2-6-01

MI-PO-1000-8-96MIN

8 MIN

16 MIN

24 MIN

32 MIN

40 MIN

48 MIN

56 MIN

64 MIN

72 MIN

80 MIN

88 MIN

96 MIN

PRINTED IN USA

CALIBRATED CHARTS

E.S. Adkins #1

Bill Peter

2-6-01

MI-PO-1000-8-96MIN

8 MIN

16 MIN

24 MIN

32 MIN

40 MIN

48 MIN

56 MIN

64 MIN

72 MIN

80 MIN

88 MIN

96 MIN

PRINTED IN USA

CALIBRATED CHARTS

E.S. Adkins #1

Bill Peter

2-6-01

MI-PO-1000-8-96MIN

8 MIN

16 MIN

24 MIN

32 MIN

40 MIN

48 MIN

56 MIN

64 MIN

72 MIN

80 MIN

88 MIN

96 MIN

PRINTED IN USA

CALIBRATED CHARTS

E.S. Adkins #1

Bill Peter

2-6-01

MI-PO-1000-8-96MIN

8 MIN

16 MIN

24 MIN

32 MIN

40 MIN

48 MIN

56 MIN

64 MIN

72 MIN

80 MIN

88 MIN

96 MIN

PRINTED IN USA

CALIBRATED CHARTS

E.S. Adkins #1

Bill Peter

2-6-01

MI-PO-1000-8-96MIN

8 MIN

16 MIN

24 MIN

32 MIN

40 MIN

48 MIN

56 MIN

64 MIN

72 MIN

80 MIN

88 MIN

96 MIN

PRINTED IN USA

CALIBRATED CHARTS

E.S. Adkins #1

Bill Peter

2-6-01

MI-PO-1000-8-96MIN

8 MIN

16 MIN

24 MIN

32 MIN

40 MIN

48 MIN

56 MIN

64 MIN

72 MIN