

UNION TEXAS PETROLEUM
 BRITT "B" NO. 2
 LEA COUNTY, NEW MEXICO

Status

1 cmt. 5 jts. csg. parted. Slipped down
 7', jarred up hole 3'. Gap 2851-55'.
 Set cmt. ret. @ 2970', Sqzd. Set ret.
 @ 2802'. Sqzd. w/100 sx. Set cmt. ret.
 @ 2966'. Sqz. w/100 sx.

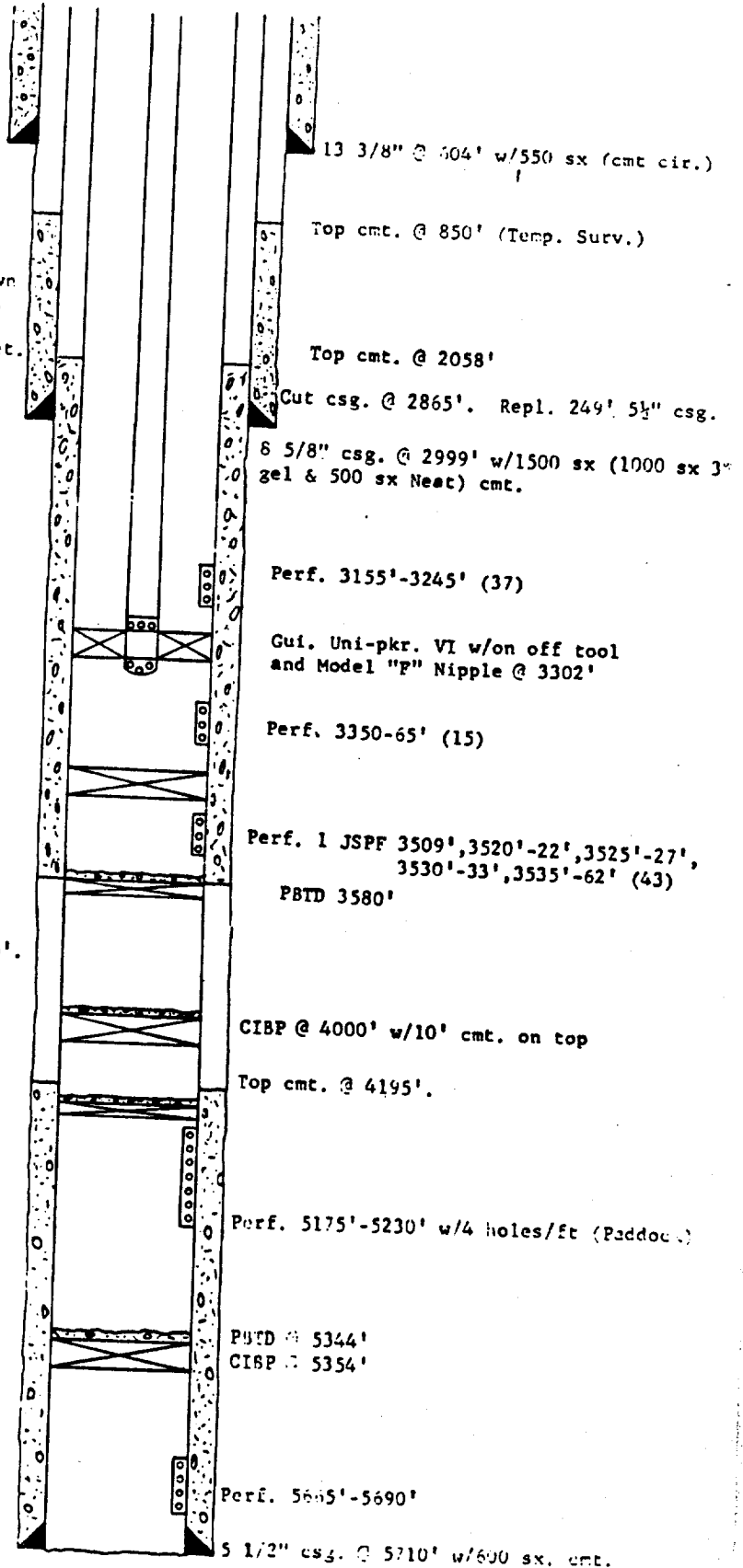
2-3/8" Prod. Tubing

CIBP @ 3490'

Halliburton Ezy-Drill cmt. ret. @
 3593' w/700 sx. cmt.

Lost circ. cmt'd. w/200 sx 3500-4475'.
 Sptd. 300 sx @ 4472'. Set ret. 2635'
 cmt. w/500 sx. Sptd. 100 sx. plug @
 4542'. Sptd. 100 sx. plug @ 3440'.
 Regained circ.

Cmt. Ret. @ 5078' w/40' cmt. on top



13 3/8" @ 604' w/550 sx (cmt cir.)

Top cmt. @ 850' (Temp. Surv.)

Top cmt. @ 2058'

Cut csg. @ 2865'. Repl. 249' 5 1/2" csg.

6 5/8" csg. @ 2999' w/1500 sx (1000 sx 3"
 gel & 500 sx Neat) cmt.

Perf. 3155'-3245' (37)

Gui. Uni-pkr. VI w/on off tool
 and Model "P" Nipple @ 3302'

Perf. 3350-65' (15)

Perf. 1 JSPP 3509', 3520'-22', 3525'-27',
 3530'-33', 3535'-62' (43)

PBTD 3580'

CIBP @ 4000' w/10' cmt. on top

Top cmt. @ 4195'.

Perf. 5175'-5230' w/4 holes/ft (Paddock)

PBTD @ 5344'

CIBP @ 5354'

Perf. 5665'-5690'

5 1/2" csg. @ 5710' w/600 sx. cmt.

Total Depth 5711' Hole Size 7 1/8"