

OIL CONSERVATION DIVISION

P.O. Box 2088
Santa Fe, New Mexico 87504-2088

Submit to Appropriate
District Office
State Lease - 4 copies
Fee Lease - 3 copies

DISTRICT I
P.O. Box 1980, Hobbs, NM 88240

DISTRICT II
P.O. Drawer DD, Artesia, NM 88210

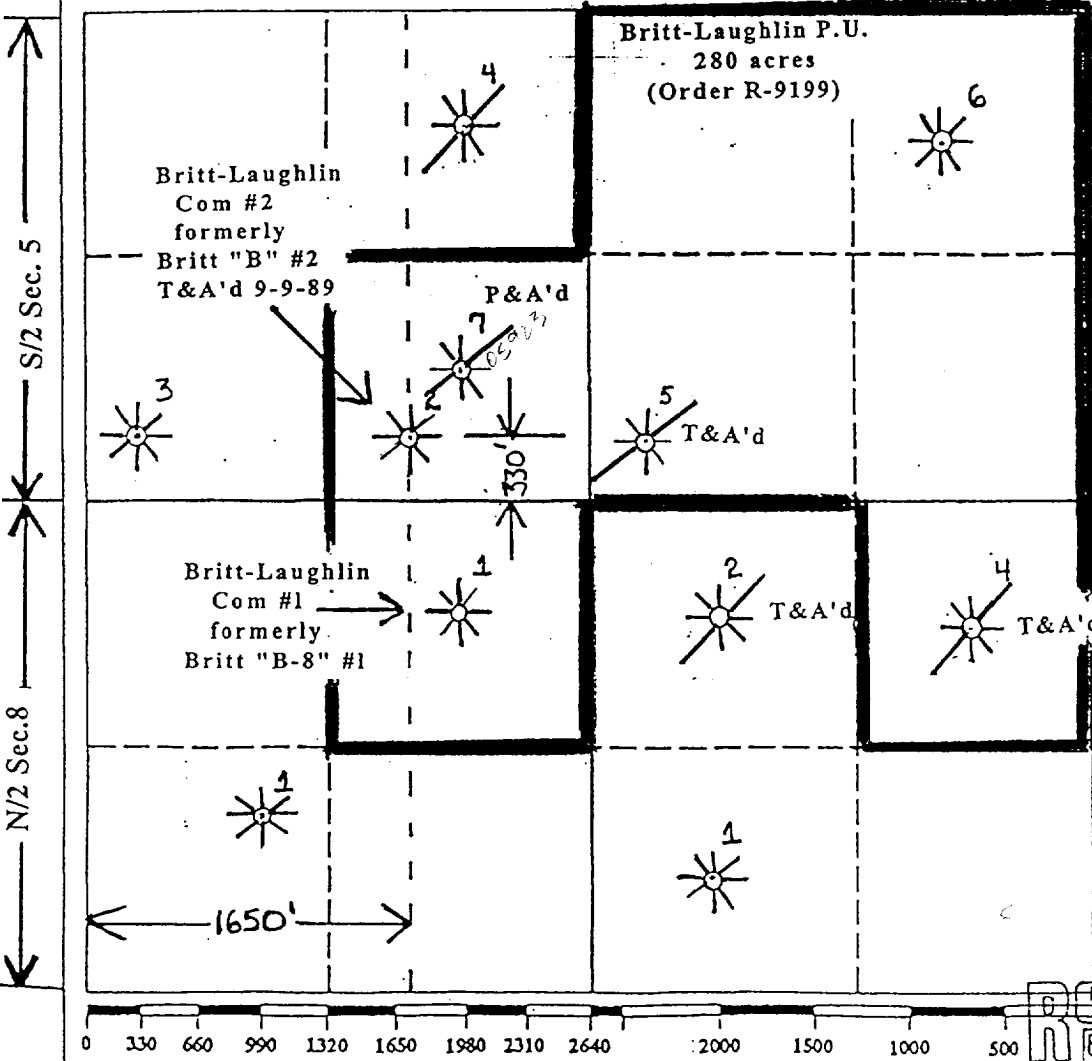
DISTRICT III
1000 Rio Brazos Rd., Aztec, NM 87410

WELL LOCATION AND ACREAGE DEDICATION PLAT

All Distances must be from the outer boundaries of the section

Operator Doyle Hartman			Lease Britt Laughlin "Com"		Well No. 2*
Unit Letter N	Section 5	Township 20S	Range 37E	County Lea	NMPM
Actual Footage Location of Well: 330' feet from the South line and 1650' feet from the West line					
Ground level Elev. 3560'	Producing Formation Queen		Pool Eumont		Dedicated Acreage: 280 Acres

- Outline the acreage dedicated to the subject well by colored pencil or hatchure marks on the plat below.
- If more than one lease is dedicated to the well, outline each and identify the ownership thereof (both as to working interest and royalty).
- If more than one lease of different ownership is dedicated to the well, have the interest of all owners been consolidated by communitization, unitization, force-pooling, etc?
 Yes No If answer is "yes" type of consolidation Force Pooling Order R-9199
 If answer is "no" list the owners and tract descriptions which have actually been consolidated. (Use reverse side of this form if necessary).
 No allowable will be assigned to the well until all interests have been consolidated (by communitization, unitization, forced-pooling, or otherwise) or until a non-standard unit, eliminating such interest, has been approved by the Division.



OPERATOR CERTIFICATION
I hereby certify that the information contained herein is true and complete to the best of my knowledge and belief.

Signature: Doyle Hartman
Printed Name: **Doyle Hartman**
Position: **Operator-Part Owner**
Company: **Doyle Hartman**
Date: **11/27/95**

SURVEYOR CERTIFICATION
I hereby certify that the well location shown on this plat was plotted from field notes of actual surveys made by me or under my supervision, and that the same is true and correct to the best of my knowledge and belief.

Date Surveyed:
Signature & Seal of Professional Surveyor:
Certificate No.:

DOYLE HARTMAN
OIL OPERATOR
RECEIVED

DEC - 1 1995

* Formerly Britt "B" No. 2 Eumont producer

LTR



Job separation sheet