

DISTRICT I
P.O. Box 1980, Hobbs, NM 88241-1980

DISTRICT II
P.O. Box Drawer DD, Artesia, NM 88211-0719

DISTRICT III
1000 Rio Brazos Rd., Aztec, NM 87410

DISTRICT IV
P.O. Box 2088, Santa Fe, NM 87504-2088

State of New Mexico
Energy, Minerals and Natural Resources Department

OIL CONSERVATION DIVISION

P.O. Box 2088
Santa Fe, New Mexico 87504-2088

Form C-101
Revised February 10, 1994
Instructions on back
Submit to Appropriate District Office
State Lease - 6 Copies
Fee Lease - 5 Copies

APPLICATION FOR PERMIT TO DRILL, RE-ENTER, DEEPEN, PLUGBACK, OR ADD A ZONE

AMENDED REPORT

¹ Operator Name and Address TEXACO EXPLORATION & PRODUCTION INC. P.O. BOX 730, HOBBS, NM 88240		² OGRID Number 022351
⁴ Property Code 11127	⁵ Property Name L. VAN ETTEN	³ API Number 30-025-06048
		⁶ Well No. 8

⁷ Surface Location

Ul or lot no.	Section	Township	Range	Lot.Idn	Feet From The	North/South Line	Feet From The	East/West Line	County
P	9	20S	37E		660	SOUTH	990	EAST	LEA

⁸ Proposed Bottom Hole Location If Different From Surface

Ul or lot no.	Section	Township	Range	Lot.Idn	Feet From The	North/South Line	Feet From The	East/West Line	County
⁹ Proposed Pool 1 MONUMENT PADDOCK					¹⁰ Proposed Pool 2				

¹¹ Work Type Code P	¹² WellType Code O	¹³ Rotary or C.T. ROTARY	¹⁴ Lease Type Code S	¹⁵ Ground Level Elevation 3544'
¹⁶ Multiple No	¹⁷ Proposed Depth 5550'	¹⁸ Formation PADDOCK	¹⁹ Contractor UNKNOWN	²⁰ Spud Date 3/4/96

²¹ Proposed Casing and Cement Program

SIZE OF HOLE	SIZE OF CASING	WEIGHT PER FOOT	SETTING DEPTH	SACKS OF CEMENT	EST. TOP
15.5"	13"	40#	177'	150	CMT. CIR.
8.25"	7"	22,24#	3697'	700	TOC @ 2422'
6.25"	5.50"	17#	3551- 6608'	265	TOC @ LINER

²² Describe the proposed program. If this application is to DEEPEN or PLUG BACK give the data on the present productive zone and proposed new productive zone. Describe the blowout prevention program, if any. Use additional sheets if necessary.

- MIRU pulling unit. TOH w/rods and pump. NU 3000# manual BOP. Release TAC, TOH w/2-3/8" production tbg.
 - TIH w/5-1/2" CIBP on 2-3/8" tbg. Set CIBP above Weir Blinebry perms @ +/- 5550' (top Blinebry perf @ 5620'). Load hole w/clean 2% KCL water.
 - MIRU wireline. TIH w/CNL-NGT-CCL and log from PBTD to 4550'. Verify perforated interval from CNL-NGT-CCL.
 - TIH w/4" csg gun and perforate Monument Paddock Pool w/2 JSPF w/120 degree spiral phasing at the following interval: 5198'-5206'. RD wireline.
 - TIH w/5-1/2" 6K treating packer. Hydrotest tbg into hole to 3000#. Set packer above Monument Paddock perms @ +/- 5150'. Test pkr & csg to 200#.
 - MIRU DS. Place 200# on backside and monitor throughout job. Acidize Monument Paddock perms w/1500 gallons 15% NEFE HCL w/24 7/8" 1.3 s.g. ball sealers. Flush to bottom perf w/2% KCL water. RD DS. Flow back well until dies.
 - Release packer, TOH w/tbg and packer. TIH w/tbg, rods and pump. Set SN below perms @ +/- 5250'. Place on test.
 - If the production rate is low, obtain DHC permit to commingle Monument Paddock w/Weir Blinebry. MIRU pulling and drill out CIBP @ 5550' and commingle.
- ESTIMATED STARTING DATE: 3/04/96

²³ I hereby certify that the rules and regulations of the Oil Conservation Division have been complied with and that the information given above is true and complete to the best of my knowledge and belief.

Signature *Paul R. Wilcox*
Printed Name Paul R. Wilcox
Title Field Technician
Date *2/26/96*
Telephone 397-0400

OIL CONSERVATION DIVISION	
ORIGINAL SIGNED BY JERRY SEXTON DISTRICT I SUPERVISOR	
Approved By:	
Title:	
Approval Date: FEB 28 1996	Expiration Date:
Conditions of Approval: Attached <input type="checkbox"/>	

Permit Expires 6 Months from Approval
 Date Unless Drilling Underway
 Plugback

DISTRICT I
P.O. Box 1980, Hobbs, NM 88241-1980
DISTRICT II
P.O. Box Drawer DD, Artesia, NM 88211-0719
DISTRICT III
1000 Rio Brazos Rd., Aztec, NM 87410
DISTRICT IV
P.O. Box 2088, Santa Fe, NM 87504-2088

State of New Mexico
Energy, Minerals and Natural Resources Department

OIL CONSERVATION DIVISION
P.O. Box 2088
Santa Fe, New Mexico 87504-2088

Form C-102
Revised February 10, 1994
Instructions on back
Submit to Appropriate District Office
State Lease - 4 Copies
Fee Lease - 3 Copies
 AMENDED REPORT

WELL LOCATION AND ACREAGE DEDICATION PLAT

¹ API Number 30-025-06048		² Pool Code 47080		³ Pool Name MONUMENT PADDOCK	
⁴ Property Code 11127		⁵ Property Name L. VAN ETTEN			⁶ Well No. 8
⁷ OGRID Number 022351		⁸ Operator Name TEXACO EXPLORATION & PRODUCTION INC.			⁹ Elevation 3544'

¹⁰ Surface Location

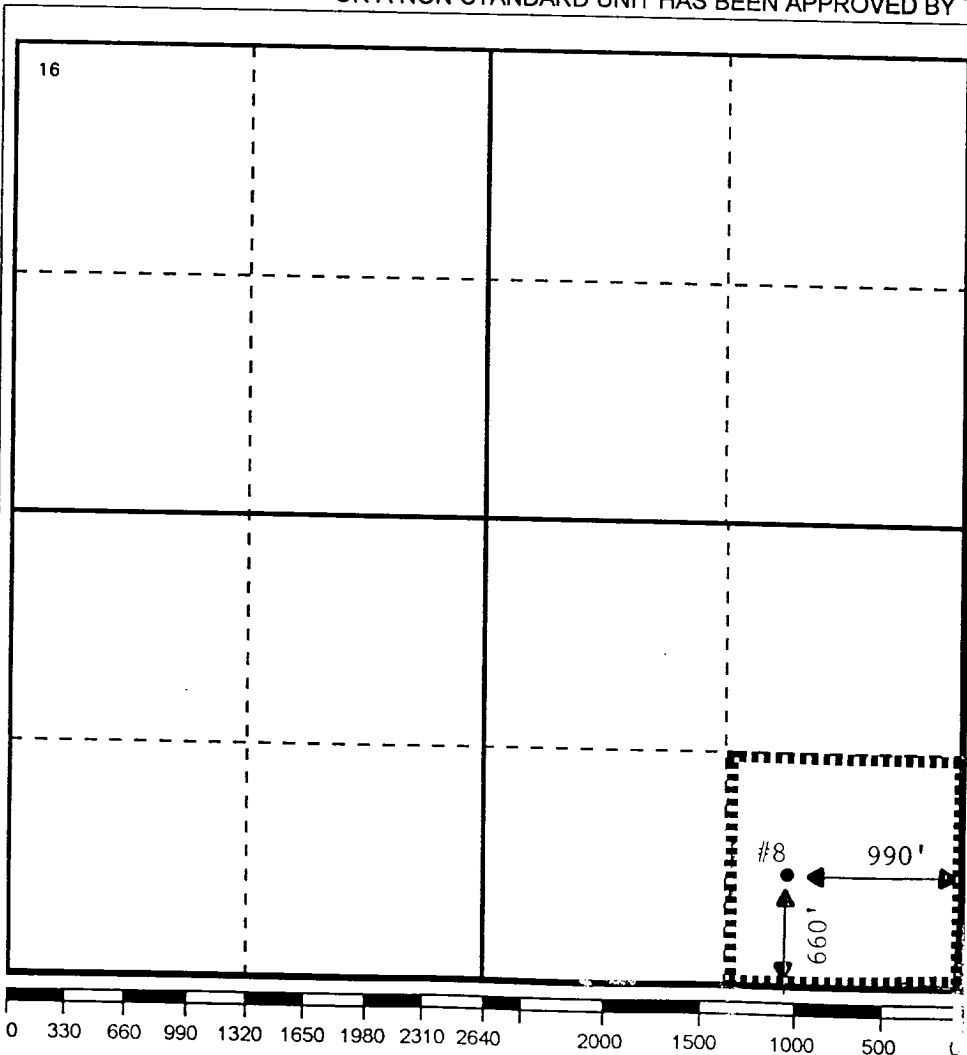
Ul or lot no.	Section	Township	Range	Lot.Idn	Feet From The	North/South Line	Feet From The	East/West Line	County
P	9	20S	37E		660	SOUTH	990	EAST	LEA

¹¹ Bottom Hole Location If Different From Surface

Ul or lot no.	Section	Township	Range	Lot.Idn	Feet From The	North/South Line	Feet From The	East/West Line	County

¹² Dedicated Acres 40	¹³ Joint or Infill No	¹⁴ Consolidation Code	¹⁵ Order No.
-------------------------------------	-------------------------------------	----------------------------------	-------------------------

NO ALLOWABLE WILL BE ASSIGNED TO THIS COMPLETION UNTIL ALL INTERESTS HAVE BEEN CONSOLIDATED OR A NON-STANDARD UNIT HAS BEEN APPROVED BY THE DIVISION



17 OPERATOR CERTIFICATION
I hereby certify that the information contained herein is true and complete to the best of my knowledge and belief

Signature: *Darrell J. Carriger*
Printed Name: Darrell J. Carriger
Position: Engineering Assistant
Date:

18 SURVEYOR CERTIFICATION
I hereby certify that the well location shown on this plat was plotted from field notes of actual surveys made by me or under my supervision, and that the same is true and correct to the best of my knowledge and belief.

Date Surveyed:
Signature & Seal of Professional Surveyor:
Certificate No.:

