

Submit 3 Copies  
to Appropriate  
District Office

State of New Mexico  
Energy, Minerals and Natural Resources Department

Form C-103  
Revised 1-1-89

DISTRICT I  
P.O. Box 1980, Hobbs, NM 88240

OIL CONSERVATION DIVISION  
P.O. Box 2088  
Santa Fe, New Mexico 87504-2088

DISTRICT II  
P.O. Drawer DD, Artesia, NM 88210

DISTRICT III  
1000 Rio Brazos Rd., Aztec, NM 87410

WELL API NO.  
3002509884

5. Indicate Type of Lease  
STATE  FEE

6. State Oil & Gas Lease No.  
B-1167-48

7. Lease Name or Unit Agreement Name

NORTH MONUMENT G/SA UNIT  
BLK. 6

8. Well No.  
9

9. Pool name or Wildcat  
EUNICE MONUMENT G/SA

SUNDRY NOTICES AND REPORTS ON WELLS  
(DO NOT USE THIS FORM FOR PROPOSALS TO DRILL OR TO DEEPEN OR PLUG BACK TO A  
DIFFERENT RESERVOIR. USE "APPLICATION FOR PERMIT"  
(FORM C-101) FOR SUCH PROPOSALS.)

1. Type of Well:  
OIL WELL  GAS WELL  OTHER

2. Name of Operator  
AMERADA HESS CORPORATION

3. Address of Operator  
POST OFFICE DRAWER D, MONUMENT, NEW MEXICO 88265

4. Well Location  
Unit Letter I : 1980 Feet From The SOUTH Line and 660 Feet From The EAST Line  
Section 20 Township 19S Range 37E NMPM LEA County

10. Elevation (Show whether DF, RKB, RT, GR, etc.)

11. Check Appropriate Box to Indicate Nature of Notice, Report, or Other Data

NOTICE OF INTENTION TO:		SUBSEQUENT REPORT OF:	
PERFORM REMEDIAL WORK <input type="checkbox"/>	PLUG AND ABANDON <input type="checkbox"/>	REMEDIAL WORK <input type="checkbox"/>	ALTERING CASING <input type="checkbox"/>
TEMPORARILY ABANDON <input type="checkbox"/>	CHANGE PLANS <input type="checkbox"/>	COMMENCE DRILLING OPNS. <input type="checkbox"/>	PLUG AND ABANDONMENT <input type="checkbox"/>
PULL OR ALTER CASING <input type="checkbox"/>		CASING TEST AND CEMENT JOB <input checked="" type="checkbox"/>	
OTHER: <input type="checkbox"/>		OTHER: <input type="checkbox"/>	

12. Describe Proposed or Completed Operations (Clearly state all pertinent details, and give pertinent dates, including estimated date of starting any proposed work) SEE RULE 1103.

NMGSAU #609 (05-04-93 Thru 05-10-93 / 06-30-94 Thru 07-08-94)

X-Pert Well Service moved in and rigged up pulling unit. Pulled 155-3/4" rods and pump. Installed a BOP and pulled 133 jts. of 2-7/8" tubing. Ran a 6-1/8" bit on 134 jts. of 2-7/8" tubing and tagged bottom at 3,977' for 6' of fill. TOH w/tbg. and bit. Attempted to run a RBP. Stuck plug in the wellhead. Removed the BOP and wellhead to recover the RBP. Installed the wellhead and BOP. Attempted to work the RBP through the wellhead w/no results. Installed a 8" 600 x 6" 600 spool and a BOP. Ran a 7" x 2-7/8" loc-set RBP on 124 jts. of 2-7/8" tubing and attempted to set at 3,700' w/no results. TOH w/tbg. Left the RBP in the hole. TIH w/tubing and retrieving head. Latched onto the RBP. TOH w/tubing and plug. Ran a new 7" x 2-7/8" loc-set RBP on 124 jts. of 2-7/8" tubing and attempted to set at 3,700' w/no results. Attempted to set the plug from 3,700' to 3,500' w/no

(Continued on Back)

I hereby certify that the information above is true and complete to the best of my knowledge and belief.

SIGNATURE Terry L. Harvey TITLE Sr. Staff Assistant DATE 07-12-94

TYPE OR PRINT NAME Terry L. Harvey TELEPHONE NO. 393-2144

(This space for State Use)

ORIGINAL SIGNED BY JERRY SEXTON  
DISTRICT I SUPERVISOR

APPROVED BY \_\_\_\_\_ TITLE \_\_\_\_\_ DATE AUG 02 1994

CONDITIONS OF APPROVAL, IF ANY:

(05-04-93 Thru 05-10-93 Continued)

results. TOH w/tubing and plug. Suspect casing is lighter than records show. Will run a 20 to 23# plug. Ran a 7" x 2-7/8" Baker loc-set RBP for 20-23# casing on 124 jts. of 2-7/8" tubing and set at 3,700'. Star Tool loaded the casing and circulated clean w/200 bbls. of fresh water. Attempted to pressure up on the casing. Bad circulation out the intermediate casing. Closed the valve on the intermediate casing and water started coming up through the ground around the wellhead. Released the RBP. TOH w/tubing and plug. Ran a 2-3/8" seating nipple, 1 jt. of 2-7/8" salta lined tubing and 132 jts. of 2-7/8" tubing for a total of 133 jts. Set the SN OE at 3,959'. Removed the BOP and installed the wellhead. Ran a 20 x 125 x RHBC x 6 x 3 x S x 4 pump #A-1078 on 157-3/4" rods. Star Tool loaded the tubing w/20 bbls. fresh water and checked the pump action. Returned the well to pumping. Note: Well did not pass the NMGSAU casing integrity test.

(06-30-94 Thru 07-08-94)

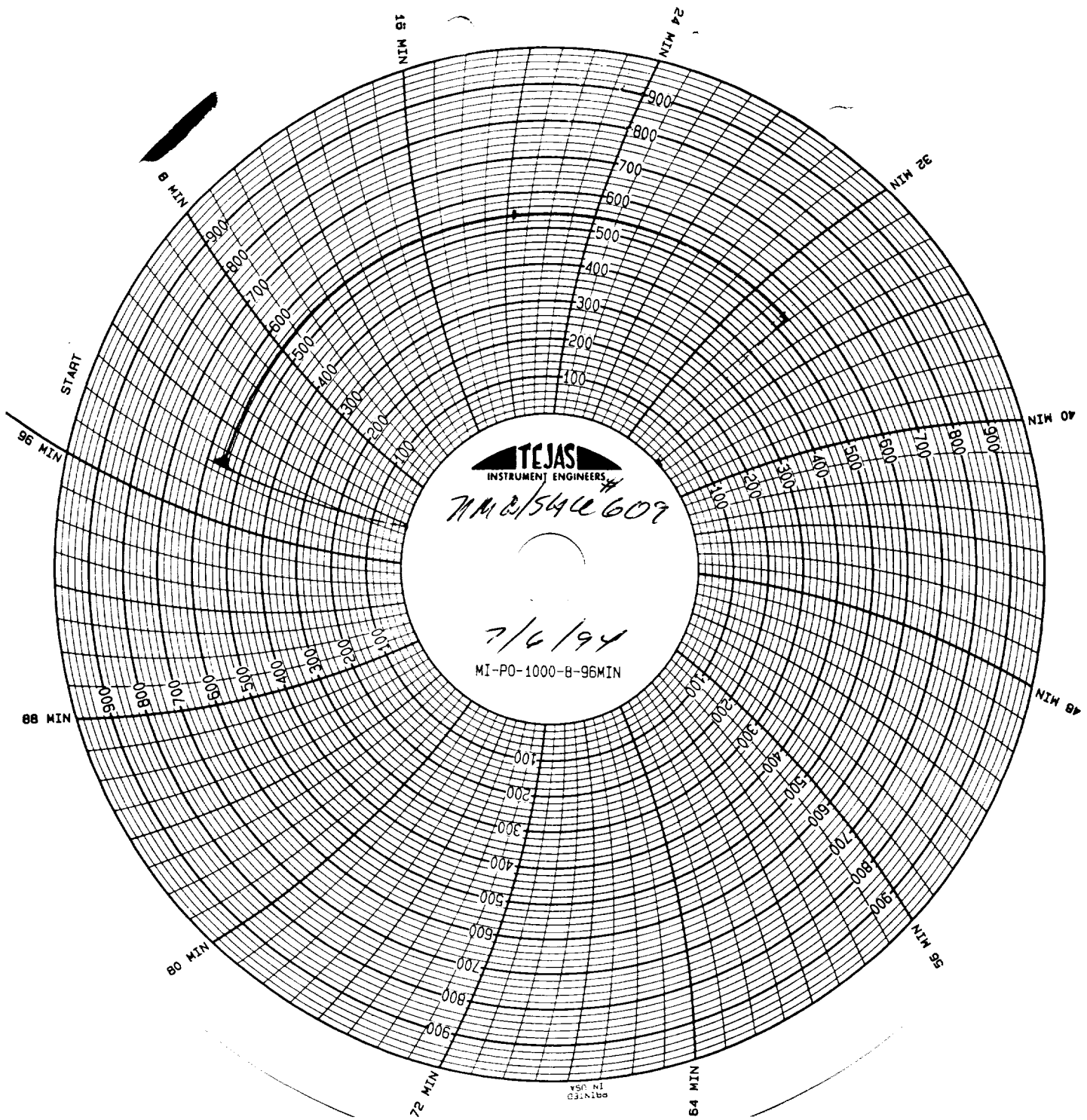
DA&S Well Service pulled the rods, pump and tubing. Ran a 7" x 2-7/8" Baker loc-set RBP on 124 jts. of 2-7/8" tubing and set at 3,689'. Star Tool loaded the casing and circulated clean w/200 bbls. fresh water. Had circulation out the intermediate casing. Circulated clean. Ran a 7" x 2-7/8" Baker fullbore packer on 44 jts. of 2-7/8" tubing and found the bottom of the casing leak at 1,336'. Was unable to find the top leak due to the wellhead leaking. Ran a casing spear and latched onto the production casing, pulled the casing off the slips and removed the old wellhead. Installed a new wellhead from the int. casing up. Ran a packer and found the top of the casing leak at 1,277'. Casing tested OK above 1,277' and below 1,336'. Pressure up to 1,300 psi on casing leak. Was unable to get any rate into leak. Rotary Wireline shot two holes in the 7" casing at 1,360'. Ran a 7" x 2-7/8" fullbore packer on 40 jts. of 2-7/8" tubing and set at 1,219'. Circulated water through the casing perfs. and out the int. casing. Circulated clean. TOH w/tubing and packer. Ran a 7" 20-23# cement retainer on 40 jts. of 2-7/8" tubing to 1,218'. Pumped through the retainer w/7 bbls. fresh water. Set the retainer at 1,218' and tested the tubing to 1,000 psi. Held OK. Halliburton pumped 200 sacks of Premium Plus cement w/2% Calcium Chloride through the 7" casing perfs. Had circulation out the 9-5/8" int. casing. Max. Press.-700 psi. Min. press.-100 psi and AIR-3 BPM. Stung out of the retainer and reversed out w/15 bbls. fresh water. Circulated 7 sacks to the pit, left 23 sacks in the casing and 170 sacks behind the pipe. TOH w/the tubing. Drilled cement from 1,246' to 1,360' and stringers to 1,391'. Circulated clean and tested to 500 psi for 30 mins. Held OK. TOH w/tubing, drill collars and bit. Laid down the drill collars. Ran the retrieving head on 124 jts. of 2-7/8" tubing. Note: Well passed the NMGSAU casing integrity test. Circulate sand off of RBP. Latched onto and TOH w/tubing and RBP. TIH w/2-3/8" SN, 1 jt. 2-7/8" salta lined tubing, 8 jts. of 2-7/8" tubing, 7" x 2-7/8" Baker TAC, 123 jts. of 2-7/8" tubing and 2 2-7/8" x 10' tubing subs. Set SN OE at 3,965'. Set TAC at 3,691' with 14,000# of tension. Removed BOP and installed wellhead. TIH w/2" x 1-1/4"

NMGSAU #609 3

(06-30-94 Thru 07-08-94 Continued)

RHBC 6' x 3' x S x 4' sucker rod pump #A-1078 on 156-3/4" sucker rods, 2 3/4" x 8' pony rods, 1 3/4" x 4' pony rod and a 1-1/4" x 16' polish rod w/1-1/2" x 8' polish rod liner. Rod boxes and pin threads chased and lubricated w/corrosion inhibitor and oil and made up w/rod tongs. Load and test tubing to 500 psi. Rigged down pulling unit and cleaned location. Resumed producing well.

Test (24 Hours): 15 BOPD, 16 BWPD and 57 MCF



TEJAS  
INSTRUMENT ENGINEERS

# 77M2/542609

7/6/94

MI-PO-1000-8-96MIN

MADE IN USA

YMA/S4U #609

32 min chart

Joe Smith

AHC