

DISTRICT I
P.O. Box 1980, Hobbs, NM 88240

DISTRICT II
P.O. Drawer 00, Artesia, NM 88210

DISTRICT III
1000 Rio Bencon Rd., Aztec, NM 87410

OIL CONSERVATION DIVISION
P.O. Box 2088
Santa Fe, New Mexico 87504-2088

WELL API NO.	30-025-12462
5. Indicate Type of Lease	STATE <input type="checkbox"/> FEE <input checked="" type="checkbox"/>
6. State Oil & Gas Lease No.	
7. Lease Name or Unit Agreement Name	NORTH MONUMENT G/SA UNIT BLK 13
8. Well No.	10
9. Pool name or Wildcat	FUNICE MONUMENT G/SA
10. Elevation (Show whether DF, RKB, RT, GR, etc.)	

SUNDRY NOTICES AND REPORTS ON WELLS
(DO NOT USE THIS FORM FOR PROPOSALS TO DRILL OR TO DEEPEN OR PLUG BACK TO A DIFFERENT RESERVOIR. USE "APPLICATION FOR PERMIT" (FORM C-101) FOR SUCH PROPOSALS.)

1. Type of Well:	OIL WELL <input checked="" type="checkbox"/> GAS WELL <input type="checkbox"/> OTHER
2. Name of Operator	AMERADA HESS CORPORATION
3. Address of Operator	DRAWER D, MONUMENT, NEW MEXICO 88265
4. Well Location	Unit Lease <u>J</u> : <u>1991</u> Feet From The <u>EAST</u> Line and <u>1988</u> Feet From The <u>SOUTH</u> Line Section <u>35</u> Township <u>19S</u> Range <u>36E</u> NMPM LEA County

11. Check Appropriate Box to Indicate Nature of Notice, Report, or Other Data

NOTICE OF INTENTION TO:		SUBSEQUENT REPORT OF:	
PERFORM REMEDIAL WORK <input type="checkbox"/>	PLUG AND ABANDON <input type="checkbox"/>	REMEDIAL WORK <input type="checkbox"/>	ALTERING CASING <input type="checkbox"/>
TEMPORARILY ABANDON <input type="checkbox"/>	CHANGE PLANS <input type="checkbox"/>	COMMENCE DRILLING OPNS. <input type="checkbox"/>	PLUG AND ABANDONMENT <input type="checkbox"/>
PULL OR ALTER CASING <input type="checkbox"/>		CASING TEST AND CEMENT JOB <input type="checkbox"/>	
OTHER: <input type="checkbox"/>		OTHER: Casing test. <input checked="" type="checkbox"/>	

12. Describe Proposed or Completed Operations (Clearly state all pertinent details, and give pertinent dates, including estimated date of starting any proposed work) SEE RULE 1103.

09-10-92 Thru 10-07-92

09-10-92: Rigged up pulling unit. TOH with a 1-1/4" x 16' Polished rod with a 1-1/2" x 6' liner, 3 3/4" x 2' pony rods, 152 3/4" sucker rods, 3/4" x 2' pony rod and a 2-1/2" x 1-1/2" x 16' pump. Removed 10-3/4" National type G tubinghead nut and attempted to install an adapter flange, with no success. Unable to locate correct adapter flange. Sent 10" 900 adapter flange to be machined for 10-3/4" National tubinghead. Dug out cellar to locate surface and intermediate casing risers. Unable to locate surface casing riser. Found 50 psi on intermediate-production casing annulus. Flowed an estimated 1/4 bbls. oil and water and died. Closed in for 24 hour buildup.

09-11-92: Installed Star Tool 10-3/4" adapter flange, 10" 900 x 6" 900 spool and a manual BOP. TOH with 5 Jts. 2-7/8" 8rd tbg., 118 jts. 2-7/8" 10v tbg., 2-7/8" sn, 2-7/8" x 4' perforated tbg. sub and a 2-7/8" bull plugged mud joint. TIH with a 6-1/8" drill bit and bit sub on 126 jts. 2-7/8" tbg. Tagged at 3,923' for 15' of fill in openhole. TOH with

(Continued On Back)

I hereby certify that the information above is true and complete to the best of my knowledge and belief.

SIGNATURE Terry L. Harvey TITLE Staff Assistant DATE 10-7-92

TITLE OR PRINT NAME TERRY L. HARVEY TELEPHONE NO. 505-393-2144

(This space for State Use)

ORIGINAL SIGNED BY JERRY SEXTON DISTRICT I SUPERVISOR

APPROVED BY _____ TITLE _____ DATE OCT 28 '92

CONDITIONS OF APPROVAL, IF ANY:

126 jts. 2-7/8" tbg., bit st and bit. TIH with a 7" elder lok-set retrievable bridge plug, retrieving tool and sn on 119 jts. 2-7/8" tbg. Set RBP at 3,700', pulled retrieving tool to 3,676' and circulated hole with 150 bbls. fresh water. Pressure decreased from 520 psi to 505 psi in 30 mins. Checked intermediate-production casing annulus and found 50 psi, after 16 hour buildup. Flowed oil and gas intermittently, recovering an estimated 2 bbls. oil.

09-14-92: Intermediate-production casing annulus CIP - 0 psi and flow. Released RBP and TOH with 119 jts. 2-7/8" tbg., sn, retrieving tool and 7" elder lok-set retrievable bridge plug. Rigged up Schlumberger and ran CNL-GR-CCL tools from 3,925' to top of fluid at 3,736'. Rigged down Schlumberger. TIH with a 2-7/8" mud joint, perforated sub, sn 4 jts. 2-7/8" tbg., 7" baker tac, and 119 jts. 2-7/8" tbg. Dropped SV, loaded tbg. with fresh water, pressure decreased from 1,000 psi to 920 psi in 2 mins. TOH with 119 jts. 2-7/8" tbg., 7" baker tac, 4 jts. 2-7/8" tbg., sn, perforated sub and 2-7/8" mud joint.

09-15-92: TIH with a 2-7/8" bull plugged mud joint, 2-7/8" x 3' perforated sub, 2-7/8" sn, 4 jts. 2-7/8" J-55 EUE tbg., 7" baker tac, with 45,000# shear pins and 119 jts. 2-7/8" J-55 EUE tbg. Hydrotested tubing in hole to 4,000 psi above the slips and found a split on 123rd joint. Removed BOP and adapter flange and installed tubinghead slips and packing. Set TAC at 3,710', with 14,000# tension, SN at 3,834' and bottom of tubing at 3,868'. TIH with a 2-1/2" x 1-1/4" x 6' pump #A-1019, with a 1-1/4" x 10' gas anchor, 152 3/4" sucker rods, 3 3/4" x 2' pony rods, 3/4" x 4' pony rod and a 1-1/4" x 16' polished rod with a 1-1/2" x 6' liner. Loaded tbg. with fresh water and checked pump action with rig. Cleaned location and rigged down pulling unit. Closed in. Waiting for gas supply line repair.

09-17-92: Rebuilt gas engine. Gas engine would not operate on natural gas supply.

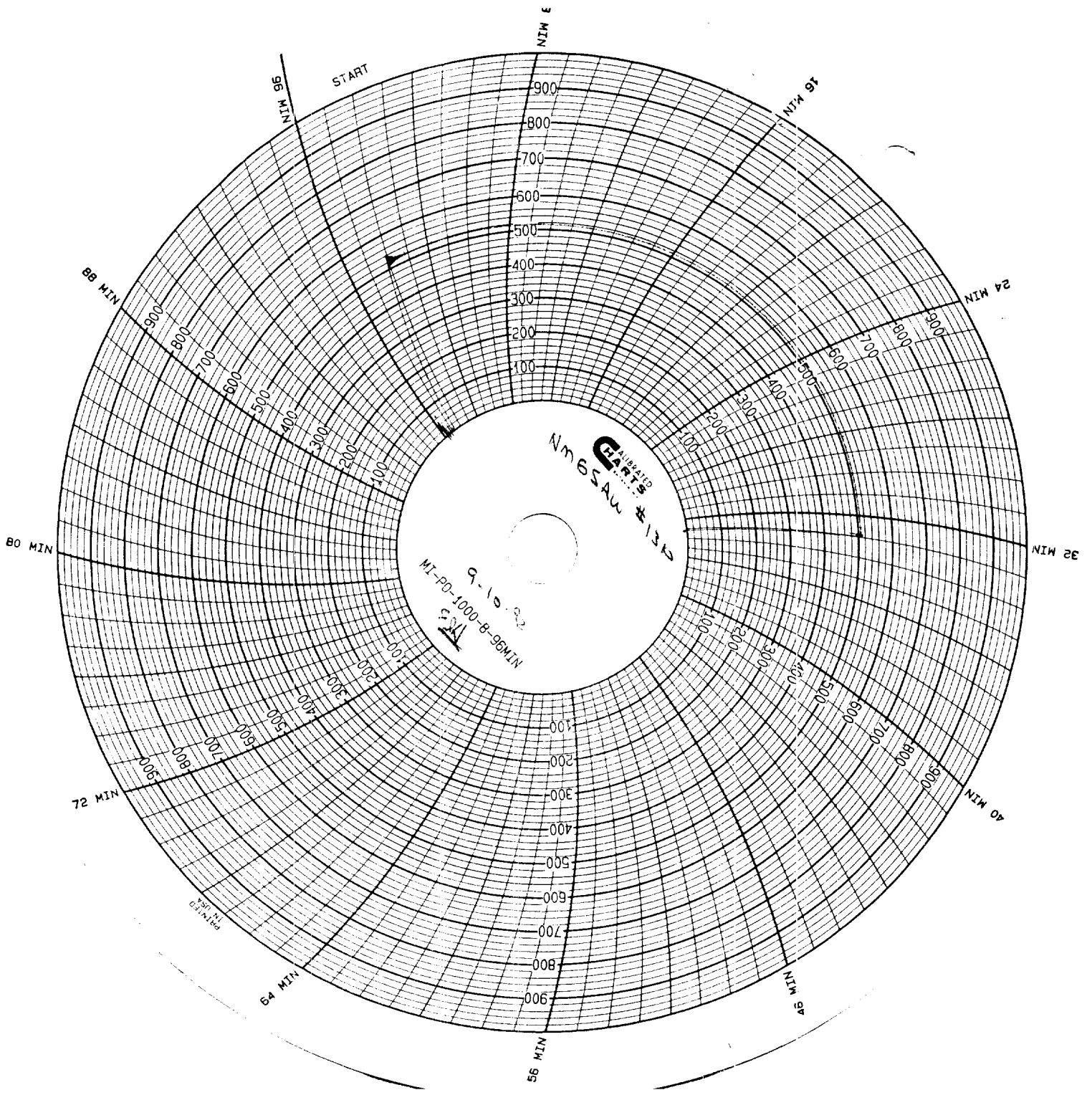
09-18-92 Thru 10-07-92: Pumping.

24 Hour Test: 3 BOPD and 3 BWPD

REPER

0012 0158

0000 0000



N174 96
N174 94
N174 92
N174 90
N174 88
N174 86
N174 84
N174 82
N174 80
N174 78
N174 76
N174 74
N174 72
N174 70
N174 68
N174 66
N174 64
N174 62
N174 60
N174 58
N174 56
N174 54
N174 52
N174 50
N174 48
N174 46
N174 44
N174 42
N174 40
N174 38
N174 36
N174 34
N174 32
N174 30
N174 28
N174 26
N174 24
N174 22
N174 20
N174 18
N174 16
N174 14
N174 12
N174 10
N174 8
N174 6
N174 4
N174 2
N174 0

MI-PO-100-8-96MIN
9-10-22
MI-PO-100-8-96MIN

900
800
700
600
500
400
300
200
100

START

N174 96

N174 94

N174 92

N174 90

N174 88

N174 86

N174 84

N174 82

N174 80

N174 78

N174 76

N174 74

N174 72

N174 70

N174 68

N174 66

N174 64

N174 62

N174 60

N174 58

N174 56

N174 54

N174 52

N174 50

N174 48

N174 46

N174 44

N174 42

N174 40

N174 38

N174 36

N174 34

N174 32

N174 30

N174 28

N174 26

N174 24

N174 22

N174 20

N174 18

N174 16

N174 14

N174 12

N174 10

N174 8

N174 6

N174 4

N174 2

N174 0

MI-PO-100-8-96MIN