

COUNTY LEA FIELD Monument OWWO
 OPR GULF OIL CORP. STATE NM MN 12476
 3 Graham - State (NCT-F) MAP
 Sec 36, T-19-S, R-36-E
 1980' FSL, 1980' FEL of Sec. CO-ORD

CSG & SX . TUBING	CLASS		EL	
	FORMATION	DATUM	FORMATION	DATUM
10 3/4" at 273' w/150 SX				
7 5/8" at 2336' w/300 SX				
5 1/2" at 3855' w/150 SX				

LOGS EL GR RA IND HC A

IP (Grayburg-San Andres) Perfs 3526-3625' F 1 BOPD + 4 BW. Pot
 based on 24 hr test thru 24/64" chk, CP 120#, TP 350#.

TD 3921'; PBD 3660'

Distribution limited and publication prohibited by subscribers' agreement.
 Reproduction rights reserved by Williams & Lee Scouting Service, Inc.

CONT.
DATE

PROP DEPTH 3650' TYPE WO

- 9-4-69 F.R. 9-2-69
- 9-10-69 PD 3650' WO (Grayburg-San Andres)
 (Orig. Gulf Oil Corp. #3 Graham - State "F",
 comp 3-20-37 from OH 3855-3921', P&A 9-19-61',
 OTD 3921')
- 9-16-69 TD 3921'; CO @ 38'
- 9-22-69 TD 3921'; PBD 3660'; Prep Test
- 9-25-69 CO to 3660'
- Perf 3526-28', 3546-48', 3590-92', 3623-25'
 w/2 SPF
- TD 3921'; PBD 3660'; Complete
- Flwd 1 BO + 4 BW in 24 hrs thru 24/64" chk,
 TP 350#, CP 120#
- TD 3921'; PBD 3660'; COMPLETE
- COMPLETION REPORTED

Submit to Appropriate District Office
State Lease - 4 copies
Fee Lease - 3 copies

State of New Mexico
Energy, Minerals and Natural Resources Department

Form C-102
Revised 1-1-89

OIL CONSERVATION DIVISION
P.O. Box 2088
Santa Fe, New Mexico 87504-2088

DISTRICT I
P.O. Box 1980, Hobbs, NM 88240

DISTRICT II
P.O. Drawer DD, Artesia, NM 88210

DISTRICT III
1000 Rio Brazos Rd., Aztec, NM 87410

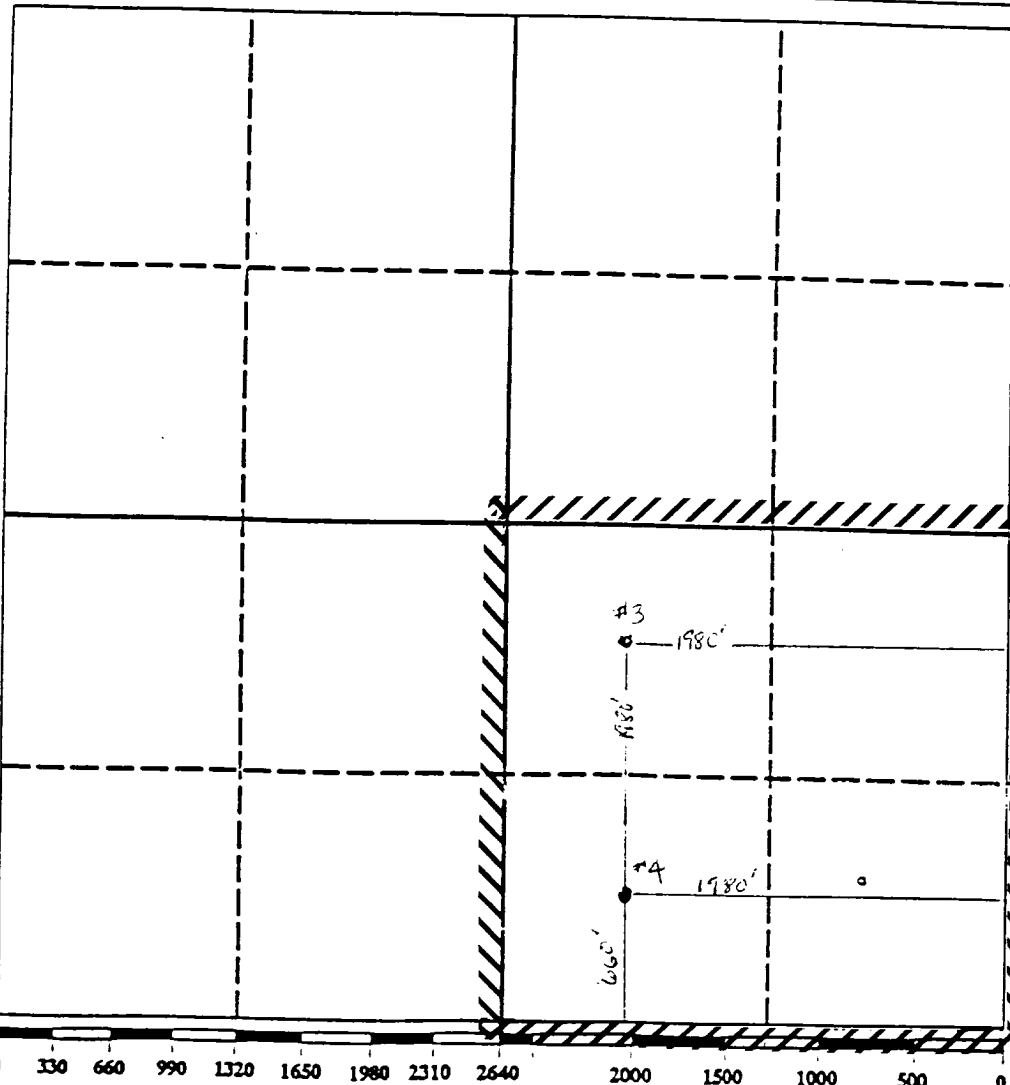
SIMULTANEOUSLY DEDICATED

WELL LOCATION AND ACREAGE DEDICATION PLAT

All Distances must be from the outer boundaries of the section

Operator CHEVRON U.S.A. INC.		Lease GRAHAM ST. NCT F		Well No. 3
Unit Letter J	Section 36	Township 19S	Range 35E	County LEA
Actual Footage Location of Well: 1980 feet from the SOUTH line and 1980 feet from the EAST line				
Ground level Elev. 3593	Producing Formation QUEEN/PENROSE	Pool EUMONT	Dedicated Acreage: 160 Acres	

- Outline the acreage dedicated to the subject well by colored pencil or hatchure marks on the plat below.
- If more than one lease is dedicated to the well, outline each and identify the ownership thereof (both as to working interest and royalty).
- If more than one lease of different ownership is dedicated to the well, have the interest of all owners been consolidated by communitization, unitization, force-pooling, etc.?
 Yes No If answer is "yes" type of consolidation _____
 If answer is "no" list the owners and tract descriptions which have actually been consolidated. (Use reverse side of this form if necessary.) _____
 No allowable will be assigned to the well until all interests have been consolidated (by communitization, unitization, forced-pooling, or otherwise) or until a non-standard unit, eliminating such interest, has been approved by the Division.



OPERATOR CERTIFICATION

I hereby certify that the information contained herein is true and complete to the best of my knowledge and belief.

Signature: P. R. Matthews
 Printed Name: P. R. MATTHEWS
 Position: TECHNICAL ASSISTANT
 Company: CHEVRON U.S.A. INC.
 Date: 1-23-92

SURVEYOR CERTIFICATION

I hereby certify that the well location shown on this plat was plotted from field notes of actual surveys made by me or under my supervision, and that the same is true and correct to the best of my knowledge and belief.

Date Surveyed: _____
 Signature & Seal of Professional Surveyor: _____
 Certificate No.: _____

NSP-55