

NUMBER OF COPIES RECEIVED	
DISTRIBUTION	
PROPERTY	
FILE	
U.S.G.S.	
LAND OFFICE	
TRANSPORTER	OIL
	GAS
PRODUCTION OFFICE	
OPERATOR	

NEW MEXICO OIL CONSERVATION COMMISSION  
Santa Fe, New Mexico

Form C-101  
Revised (12/1/55)

NOTICE OF INTENTION TO DRILL

HOBBS OFFICE OCC

Notice must be given to the District Office of the Oil Conservation Commission and approval obtained before drilling or recompletion begins. If changes in the proposed plan are considered advisable, a copy of this notice showing such changes must be returned to the District Office. Submit this notice in QUINTUPLICATE. One copy will be returned following approval. See additional instructions in Rules and Regulations of the Commission. If State Land submit 6 Copies Attach Form C-128 in triplicate to first 3 copies of form C-101

Hobbs, New Mexico

(Place)

July 17, 1963

(Date)

OIL CONSERVATION COMMISSION  
SANTA FE, NEW MEXICO

Gentlemen:

You are hereby notified that it is our intention to commence the Drilling of a well to be known as

**Pan American Petroleum Corporation**

(Company, or Operator)

**W. N. Terry Tr. 1 (B/A "B")**

(Lease)

Well No. **28**

in **0**

(Unit)

The well is

located **890** feet from the **South** line and **1650** feet from the

**East**

line of Section **9**, T. **19-S**, R. **38E**, NMPM.

(GIVE LOCATION FROM SECTION LINE)

**Hobbs**

Pool,

**Lea**

County

If State Land the Oil and Gas Lease is No.

If patented land the owner is **A. N. Terry**

Address **Hobbs, New Mexico**

We propose to drill well with drilling equipment as follows: **OTD with rotary tools**

The status of plugging bond is **blanket bond on file with Commission**

Drilling Contractor **Caetus Drilling Co.**

**San Angelo, Texas**

We intend to complete this well in the **Grayburg**

formation at an approximate depth of **4200'** feet.

CASING PROGRAM

We propose to use the following strings of Casing and to cement them as indicated:

Size of Hole	Size of Casing	Weight per Foot	New or Second Hand	Depth	Sacks Cement
<b>11"</b>	<b>8-5/8"</b>	<b>24#</b>	<b>New</b>	<b>400</b>	<b>Circulate</b>
<b>7-7/8"</b>	<b>4-1/2"</b>	<b>9.5#</b>	<b>New</b>	<b>4200</b>	<b>Sufficient to fill to base of salt</b>

If changes in the above plans become advisable we will notify you immediately.

ADDITIONAL INFORMATION (If recompletion give full details of proposed plan of work.)

Approved \_\_\_\_\_, 19\_\_\_\_  
Except as follows:

OIL CONSERVATION COMMISSION

By \_\_\_\_\_

Sincerely yours,

**Pan American Petroleum Corporation**

(Company or Operator)

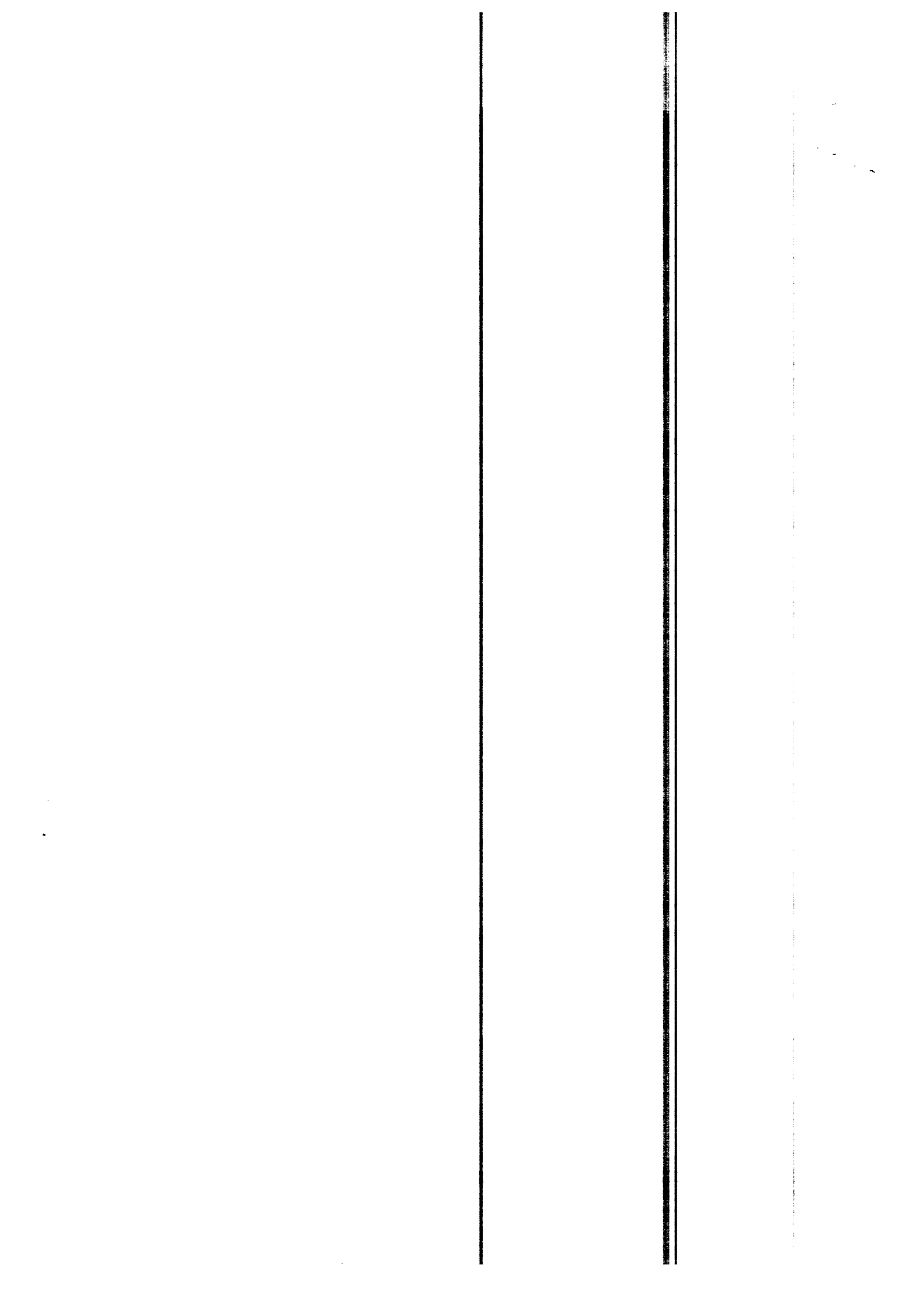
By **V. E. STALEY**

Position **Area Superintendent**

Send Communications regarding well to

Name **V. E. Staley**

Address **Box 69 - Hobbs, New Mexico**



**NEW MEXICO OIL CONSERVATION COMMISSION**  
**WELL LOCATION AND ACREAGE DEDICATION PLAT**

FORM C-126  
 Revised 9/1/57

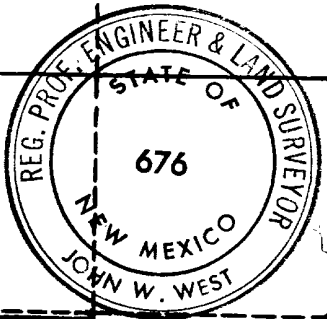
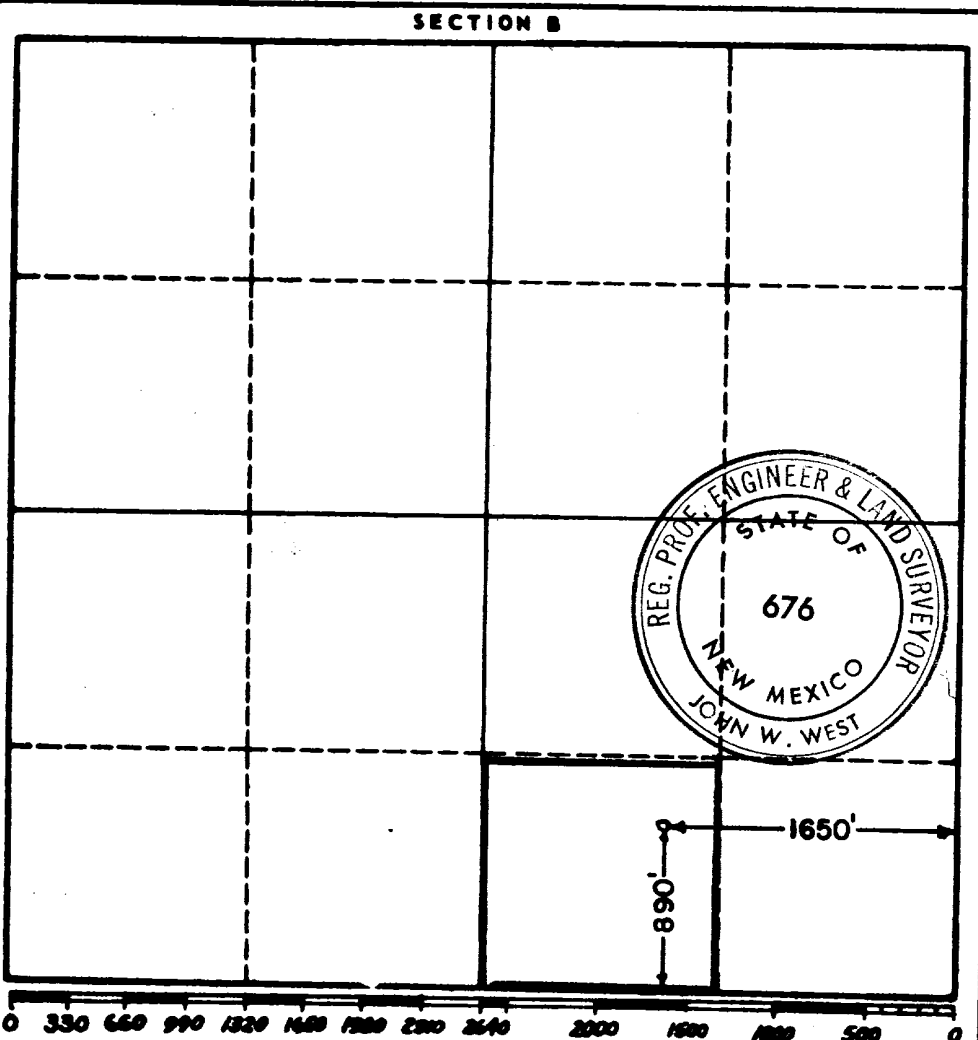
**HOBBS OFFICE**

SEE INSTRUCTIONS FOR COMPLETING THIS FORM ON THE REVERSE SIDE

Operator <b>PAN AMERICAN PET. CORP.</b>				Lease <b>ACCOUNT B</b>		1963 <b>W.N. TERRY TRACT</b> <b>ROYALTY</b>	
Unit Letter <b>O</b>	Section <b>9</b>	Township <b>19 SOUTH</b>	Range <b>38 EAST</b>	County <b>LEA</b>		28	
Actual Footage Location of Well: <b>890</b> feet from the <b>SOUTH</b> line and <b>1650</b> feet from the <b>EAST</b> line							
Ground Level Elev. <b>554</b>	Producing Formation <b>Grayburg</b>		Pool <b>Hobbs</b>		Dedicated Acreage: <b>40</b> Acres		

1. Is the Operator the only owner in the dedicated acreage outlined on the plat below? YES  NO  . ("Owner" means the person who has the right to drill into and to produce from any pool and to appropriate the production either for himself or for himself and another. (65-3-29 (e) NMSA 1935 Comp.)
2. If the answer to question one is "no," have the interests of all the owners been consolidated by communitization agreement or otherwise? YES  NO  . If answer is "yes," Type of Consolidation \_\_\_\_\_
3. If the answer to question two is "no," list all the owners and their respective interests below:

Owner	Land Description



**CERTIFICATION**

I hereby certify that the information in SECTION A above is true and complete to the best of my knowledge and belief.

Name Original Signed By <b>V. E. STALEY</b>
Position <b>Area Superintendent</b>
Company <b>Pan American Petroleum Corp.</b>
Date <b>July 17, 1963</b>

I hereby certify that the well location shows on the plat in SECTION B was plotted from field notes of actual surveys made by me or under my supervision, and that the same is true and correct to the best of my knowledge and belief.

Date Surveyed <b>7-2-63</b>
Registered Professional Engineer and/or Land Surveyor, <b>JOHN W. WEST</b>
<i>John W. West</i>
Certificate No. <b>N. M. - P. E. &amp; L. S. NO. 676</b>

