

COUNTY	LEA	FIELD	Undesignated	STATE	NM	OWWO
PR	THE BRITISH-AMERICAN OIL PRODUCING COMPANY					MAP
1 North Wilson Deep Unit						CO-ORD
Sec. 31, T-20-S, R-36-E						
660' fr S Line & 1980' fr E Line of Sec.						
Re-Spud 11-11-64						CLASS
Re-Comp 11-24-64						EL 3656'
						FORMATION
						DATUM
						FORMATION
						DATUM
LOGS EL GR RA IND HC A						
TD 12725', PBD 11755'						

IP Morrow Perfs 11353-376' CAOF 10,700 MCFGPD +127 B Cond./24 hr
 Pot. Based on 4-point test. 72 hr SIWHP 5487#, gravity gas
 .605, gravity cond. 48., GOR 59,102.

Distribution limited and publication prohibited by subscribers' agreement.
 Reproduction rights reserved by Williams & Lee Scouting Service, Inc.

CONT.	PROP	DEPTH	TYPE
DATE			

12-14-64 F.R.C. 12-17-64; OWWO, OTD 12725'.
 Orig. comp from U/Bone Spring Perfs 7888-7901'
 & L/Bone Spring Perfs 10094-122'.
 Elev. 3656' Df, Orig.
 TD 12725', PBD 11755', COMPLETED.
 Sq. Perfs 7888-7901' W/100 sx. DO
 Sq. Perfs 10094-122' W/400 sx.
 Drld & CO to 11755'
 Perf (Morrow) 11353-376'
 Natural

MORROW: FOUR POINT GAUGES

MCFGPD	Choke	Time	TP
2002	1.5"	1 hr	4525#
3474	1.5"	1½ hrs	3910#
5426	2"	3 hrs	3330#
5714	2"	1½ hrs	2540#

COUNTY	LEA	FIELD	Wildcat	STATE	N.M.
WC	THE BRITISH-AMERICAN OIL PRODUCING COMPANY				MAP
1 North Wilson Deep Unit					
Sec. 31, T-20-S, R-36-E				CO-ORD	
660' fr S Line & 1980' fr E Line of Sec.					
Spud 1-1-64; Comp 6-1-64 (U/B Spg); CLASS				EL 36562	
6-29-64 (L/B Spg)		FORMATION	DATUM	FORMATION	DATUM
TSG & SX - TUBING		LOG:			
13 3/8"	316'	325	B/Salt 3360		
9 5/8"	5349'	5288	Yates 3563		
7"	11985'	1165	7-R 3844		
			7-R Rf 3990		
			Queen 4280		
LOGS EL GR RA IND HC A		B Spg 7753			
TD 12725', PBD 11755'					
IP U/Bone Spring Perfs 7888-7901' Pmpd 238 BOPD. Pot. Based on .4 hr test, gravity 26., GOR 268.					
IP L/Bone Spring Perfs 10094-122' Pmpd 64 BOPD + 172 BW. Pot. based on 24 hr test, gravity 33., GOR 1255.					
Distribution limited and publication prohibited by subscribers' agreement. Reproduction rights reserved by Williams & Lee Scouting Service, Inc.					
CONT.		PROP DEPTH 14,000' TYPE			
DATE					

F.R. 1-9-64
 PD 14,000' - Devonian
 1-13-64 Drlg. 4052'.
 1-20-64 Drlg. 5147' dolo.
 1-27-64 Drlg. 6747' with air.
 2-3-64 Drlg. 7912'.
 2-10-64 Drlg. 8664'.
 DST (Bone Spring) 7886-7912', open 1 hr,
 GTS in 8 mins,
 Rec 3870' free oil,
 30 min ISIP 3585#, FP 538-1409#
 30 min FSIP 3258#.
 2-17-64 Drlg. 9647' lm. & sd.
 DST (Bone Spring) 8790-8822', open 1 hr,
 Rec 60' drlg. fluid
 40 min FSIP 29#, FP 29-36#,
 40 min FSIP 44#.

2-24-64 Drlg. 10214'.
DST (Bone Spring) 10010-052', open 2 hrs
30 mins,
GTS in 1 hr 35 mins @ TSTM,
rec 2030' free oil, gravity 33.,
+ 2930' salt wtr & 120' salt wtr below sub,
45 min ISIP 4178#, FP 838-2481#,
45 min FSIP 4163#.
DST 10095-10130', open 2 hrs 30 mins,
GTS immediately @ 8 MCFGPD increasing
to 30 MCFGPD
Had 9680' fluid in DP, unloaded for 45
mins, no estimate
rev out 26 BO + 5½ B Salt Wtr

Rec 120' oil below sub,
ISIP 1476#, FP 894-2256#,
1 hr 10 min FSIP 2736#.
DST 10136-162', open 2 hrs,
rec 440' O&GCM (5% oil)
30 min ISIP 1236#, FP 152-203#,
40 min FSIP 1616#.

3-2-64

Drlg. 10922'.

3-9-64

T. D. 11435', SD Repairs.

(Well blew out @ 11435', no est. on
gas volume)

3-16-64

Drlg. 11,435', tight

3-23-64

Drlg. 11,994', tight

3-30-64

Drlg. 11,994', tight

4-6-64

Drlg. 12,089', tight.

4-13-64

Drlg. 12,314', tight.

4-20-64

Drlg. 12,530', tight.

LEA COUNTY Wildcat N.M. Sec. 31-20S-36E
THE BRITISH-AMERICAN OIL PROD. CO., #1 N. Wilson Deep
Unit-Page #3

- 4-27-64 TD 12725', PBD 11784', prep to squeeze.
DST (Devonian) 12673-725', open 2 hrs 30 mins,
Rec 180' WB, 1080' salt Wtr CM + 1000' muddy
salt wtr,
rev out 5335' salt wtr
rec 80' salt wtr below sub
30 min ISIP 5039#, FP 1240-3929#,
1 hr FSIP 4942#.
Perf 10133-134'.
5-4-64 TD 12725', PBD 11784', swbg.
Squeezed perfs 10133-134' W/50 sx.
Perf 10029-030' & sq. w/50 sx.
Perf 10072-073' & sq. w/50 sx.
Perf 10094-10122' W/2 SPF

- 5-11-64 TD 12725', PBD 11784', tstg casing.
Ac. 1000 gals. 10094-122'.
Swbd 24 BO + 6 B Salt Wtr in 12 hrs.
Set BP @ 10078'
Perf 10038-058' W/2 SPF
Ac. 2500 gals. 10038-058'
Swbd load & salt wtr
squeezed perfs 10038-058' W/300 sx.
Re-squeezed perfs 10038-058' W/150 sx.
5-18-64 TD 12725', PBD 11784', fishing.
5-25-64 TD 12725', PBD 11755', MO Rotary.
Re-squeezed perfs 10038-058' W/35 sx.
Perf 7888-7901' W/2 SPF
Ac. 2000 gals.
Swbd 60 BLO + 121 BNO in 15 hrs.

**NEW MEXICO OIL CONSERVATION COMMISSION
WELL LOCATION AND ACREAGE DEDICATION PLAT**

Form C-102
Supersedes C-128
Effective 1-1-65

All distances must be from the outer boundaries of the Section.

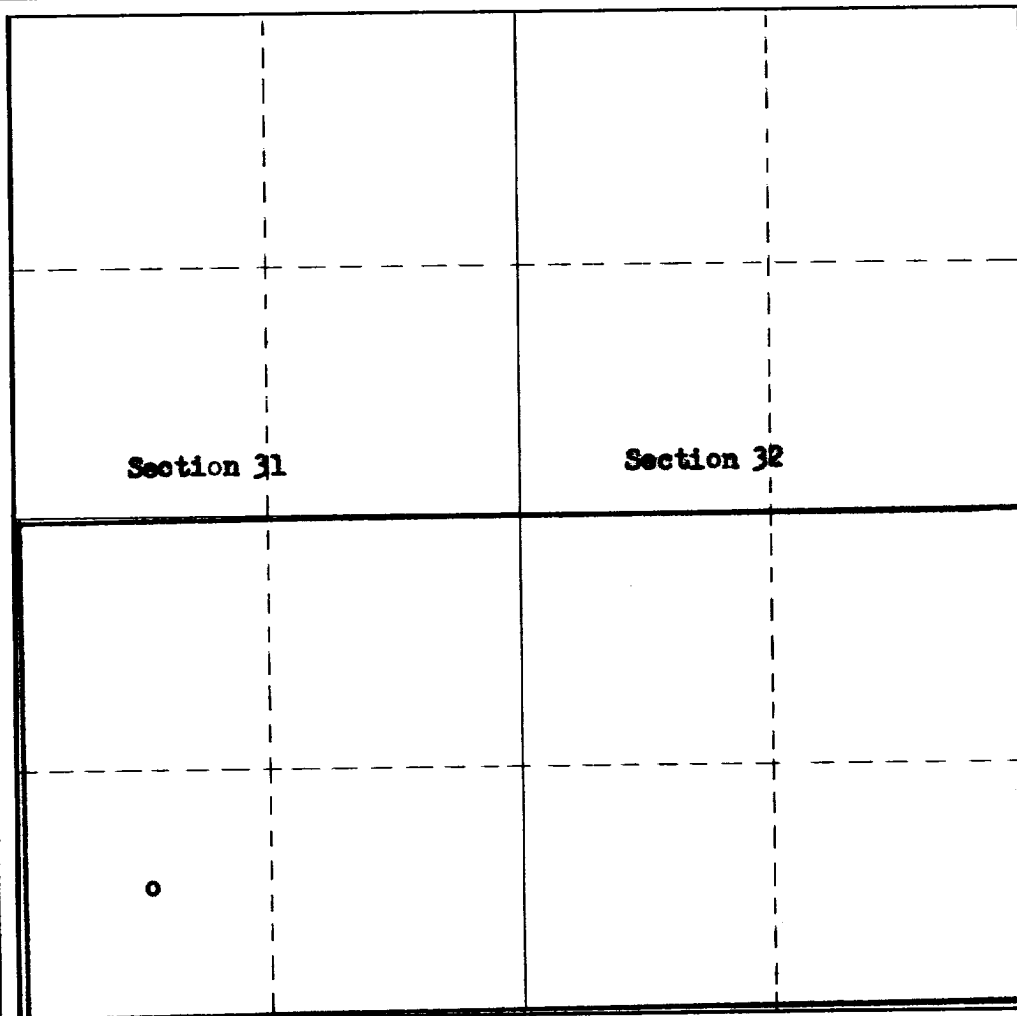
Operator Gulf Oil Corporation			Lease North Wilson Deep Unit		Well No. 1
Unit Letter 0	Section 31	Township 20-S	Range 36-E	County Lea	
Actual Footage Location of Well: 660 feet from the South line and 1980 feet from the East line					
Ground Level Elev. 3624	Producing Formation Morrow		Pool Osado Morrow		Dedicated Acreage: 320 Acres

1. Outline the acreage dedicated to the subject well by colored pencil or hachure marks on the plat below.
2. If more than one lease is dedicated to the well, outline each and identify the ownership thereof (both as to working interest and royalty).
3. If more than one lease of different ownership is dedicated to the well, have the interests of all owners been consolidated by communitization, unitization, force-pooling, etc?

☐ Yes ☐ No If answer is "yes," type of consolidation _____

If answer is "no," list the owners and tract descriptions which have actually been consolidated. (Use reverse side of this form if necessary.) _____

No allowable will be assigned to the well until all interests have been consolidated (by communitization, unitization, forced-pooling, or otherwise) or until a non-standard unit, eliminating such interests, has been approved by the Commission. **Filed in compliance with R-2907**



CERTIFICATION

I hereby certify that the information contained herein is true and complete to the best of my knowledge and belief.

Name **ORIGINAL SIGNED BY**
C. D. BORLAND

Position
Area Production Manager

Company
Gulf Oil Corporation

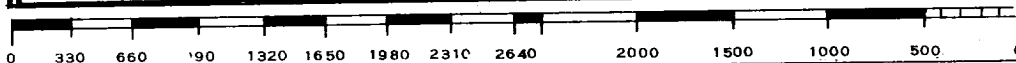
Date
January 16, 1968

I hereby certify that the well location shown on this plat was plotted from field notes of actual surveys made by me or under my supervision, and that the same is true and correct to the best of my knowledge and belief.

Date Surveyed

Registered Professional Engineer and/or Land Surveyor

Certificate No.



NUMBER OF COPIES RECEIVED	
DISTRIBUTION	
SANTA FE	
FILE	
U.S.G.S.	
LAND OFFICE	
TRANSPORTER	OIL GAS
PRODUCTION OFFICE	
OPERATOR	

NEW MEXICO OIL CONSERVATION COMMISSION
WELL LOCATION AND ACREAGE DEDICATION PLAT
 SEE INSTRUCTIONS FOR COMPLETING THIS FORM ON THE REVERSE SIDE

FORM C-128
Revised 5/1/57

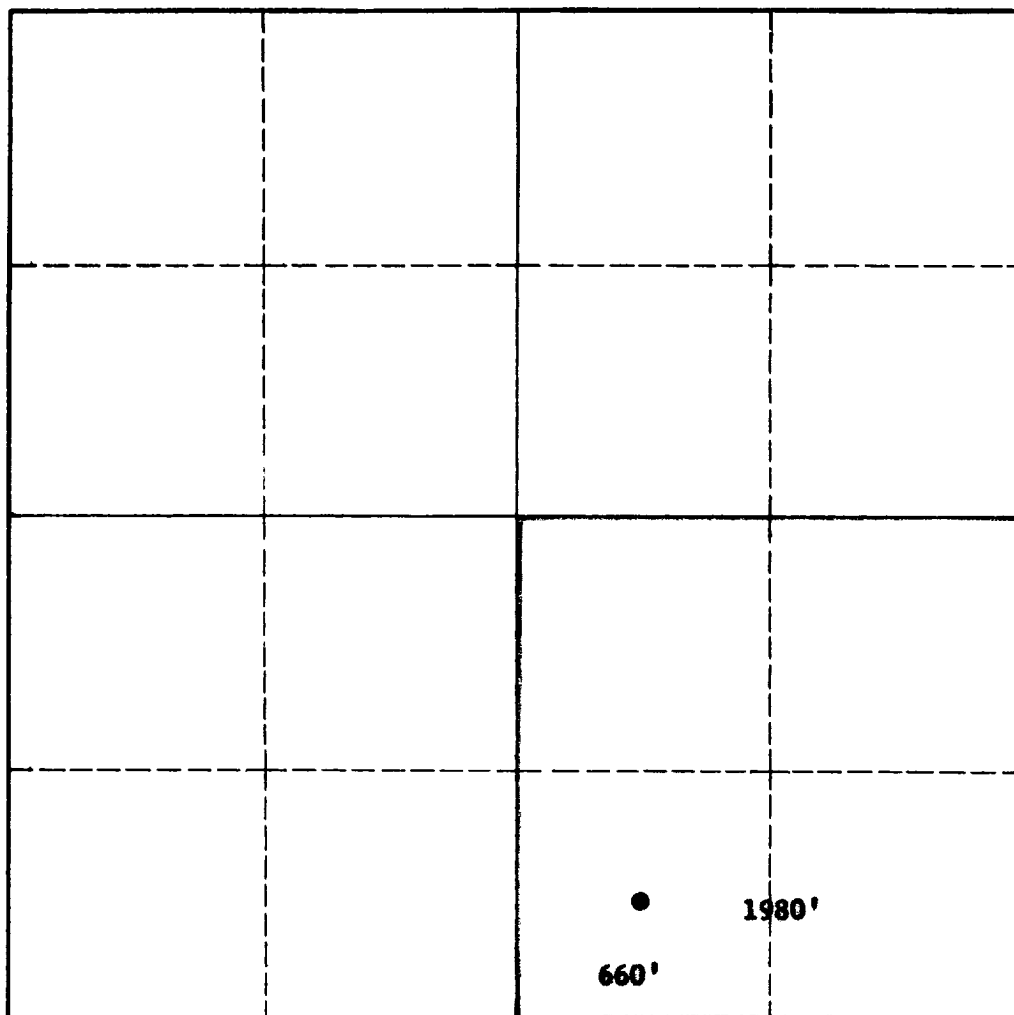
SECTION A

Operator The British-American Oil Prod. Co.		Lease North Wilson Deep Unit		Well No. 1
Unit Letter 0	Section 31	Township 20-S	Range 36-E	County Lea
Actual Footage Location of Well: 660 feet from the South line and 1980 feet from the East line				
Ground Level Elev. 3634	Producing Formation Morrow	Pool Undesignated	Dedicated Acreage: 160 Acres	

1. Is the Operator the only owner in the dedicated acreage outlined on the plat below? YES ☒ NO ____ . ("Owner" means the person who has the right to drill into and to produce from any pool and to appropriate the production either for himself or for himself and another. (65-3-29 (e) NMSA 1935 Comp.)
2. If the answer to question one is "no," have the interests of all the owners been consolidated by communitization agreement or otherwise? YES ____ NO ____ . If answer is "yes," Type of Consolidation _____
3. If the answer to question two is "no," list all the owners and their respective interests below:

Owner	Land Description

SECTION B



0 330 660 990 1320 1650 1980 2310 2640 2000 1500 1000 500 0

CERTIFICATION

I hereby certify that the information in SECTION A above is true and complete to the best of my knowledge and belief.

Name <i>William E. Proff</i>
Position District Engineer
Company The British-American Oil Prod. Co.
Date January 18, 1965

I hereby certify that the well location shown on the plat in SECTION B was plotted from field notes of actual surveys made by me or under my supervision, and that the same is true and correct to the best of my knowledge and belief.

Date Surveyed
Registered Professional Engineer and/or Land Surveyor

Certificate No.

NUMBER OF COPIES RECEIVED	
DISTRIBUTION	
SANTA	
FILE	
U.S.G.S.	
LAND OFFICE	
TRANSPORTER	OIL GAS
PRORATION OFFICE	
OPERATOR	

NEW MEXICO OIL CONSERVATION COMMISSION
WELL LOCATION AND ACREAGE DEDICATION PLAT
 SEE INSTRUCTIONS FOR COMPLETING THIS FORM ON THE REVERSE SIDE

FORM C-128
 Revised 5/1/57

OFFICE OF O.C.C.
 AUG 13 3 14 PM '64

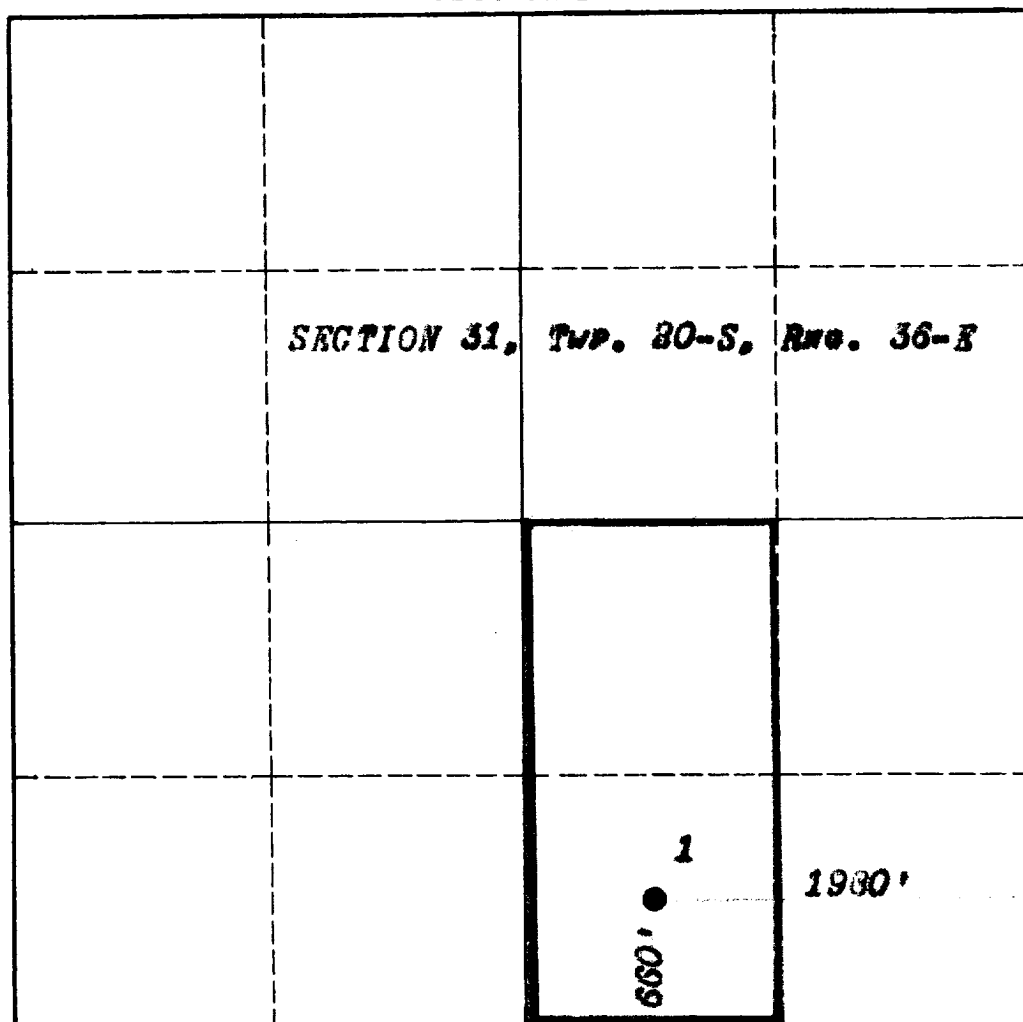
SECTION A

Operator The British-American Oil Producing Co.		Lease North Wilson Deep Unit		Well No. 1
Unit Letter 0	Section 31	Township 20-S	Range 36-E	County Lea
Actual Footage Location of Well: 1980 feet from the East line and 660 feet from the South line				
Ground Level Elev. 3634'	Producing Formation Bone Springs	Pool Osudo (Lower Bone Springs)	Dedicated Acreage: 80 Acres	

1. Is the Operator the only owner in the dedicated acreage outlined on the plat below? YES x NO ____ . ("Owner" means the person who has the right to drill into and to produce from any pool and to appropriate the production either for himself or for himself and another. (65-3-29 (e) NMSA 1935 Comp.)
2. If the answer to question one is "no," have the interests of all the owners been consolidated by communitization agreement or otherwise? YES ____ NO ____ . If answer is "yes," Type of Consolidation _____
3. If the answer to question two is "no," list all the owners and their respective interests below:

Owner	Land Description

SECTION B



CERTIFICATION

I hereby certify that the information in SECTION A above is true and complete to the best of my knowledge and belief. ORIGINAL SIGNED BY:
M. C. STEINDORF, JR.

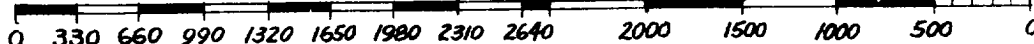
Name
M. C. Steindorf, Jr.
 Position
District Engineer
 Company **The British-American Oil Producing Co.**
 Date
August 10, 1964

I hereby certify that the well location shown on the plat in SECTION B was plotted from field notes of actual surveys made by me or under my supervision, and that the same is true and correct to the best of my knowledge and belief.

Date Surveyed
Dec. 21, 1963

Registered Professional Engineer and/or Land Surveyor

Certificate No. **754**



INSTRUCTIONS FOR COMPLETION OF FORM C-128

1. Operator shall furnish and certify to the information called for in Section A.
2. Operator shall outline the dedicated acreage for *both* oil and gas wells on the plat in Section B.
3. A registered professional engineer or land surveyor registered in the State of New Mexico or approved by the Commission shall show on the plat the location of the well and certify this information in the space provided.
4. All distances shown on the plat must be from the outer boundaries of the Section.
5. If additional space is needed for listing owners and their respective interests as required in question 3 of Section A, please use space below.

NUMBER OF COPIES RECEIVED	
DISTRIBUTION	
SANTA F	
FILE	
U.S.G.S.	
LAND OFFICE	
TRANSPORTER	OIL GAS
PRODUCTION OFFICE	
OPERATOR	

NEW MEXICO OIL CONSERVATION COMMISSION
WELL LOCATION AND ACREAGE DEDICATION PLAT
 SEE INSTRUCTIONS FOR COMPLETING THIS FORM ON THE REVERSE SIDE

FORM C-128
Revised 5/1/57

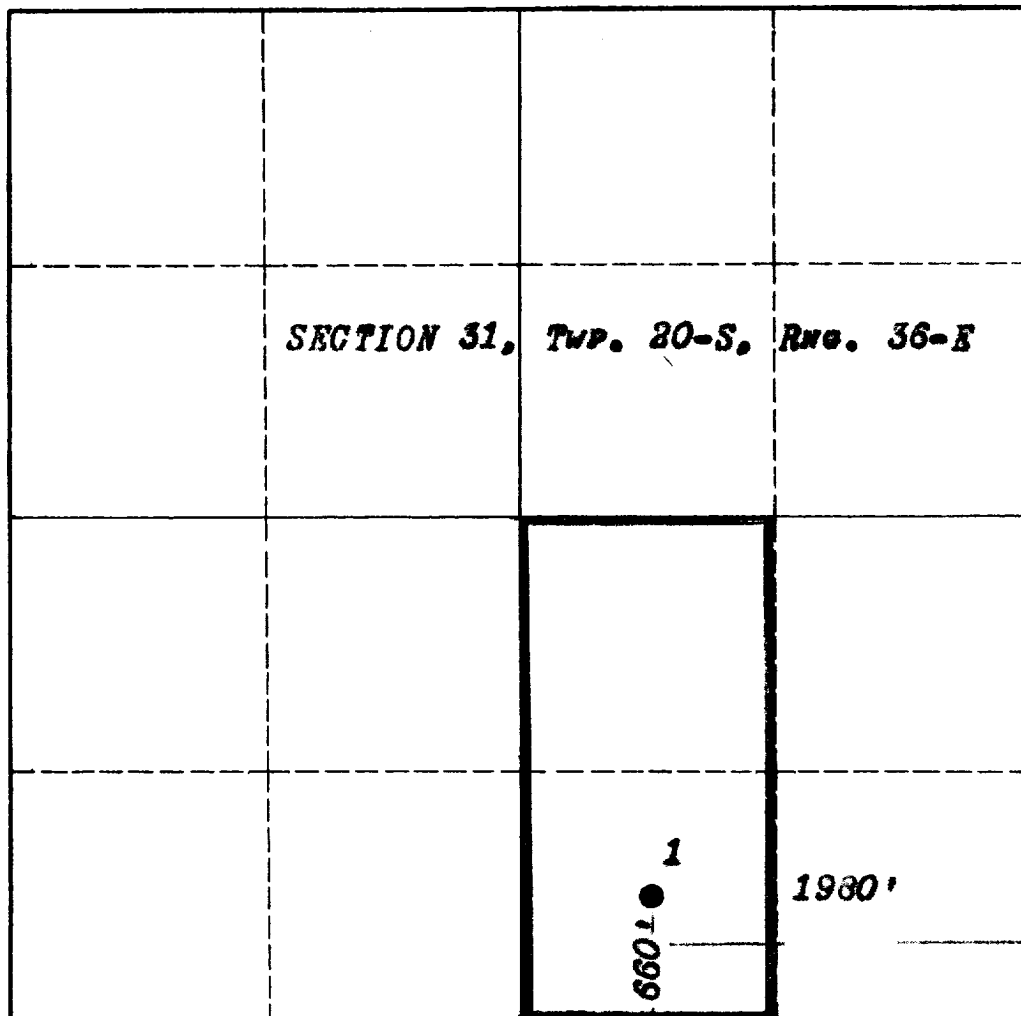
Aug 13 3 14 PM '64

SECTION A					
Operator The British-American Oil Producing Co.			Lease North Wilson Deep Unit		Well No. 1
Unit Letter 0	Section 31	Township 20-S	Range 36-E	County Lea	
Actual Footage Location of Well: 1980 feet from the East line and 660 feet from the South line					
Ground Level Elev. 3634'	Producing Formation Bone Springs		Pool Osudo (Upper Bone Springs)		Dedicated Acreage: 80 Acres

1. Is the Operator the only owner in the dedicated acreage outlined on the plat below? YES Y NO ____ . ("Owner" means the person who has the right to drill into and to produce from any pool and to appropriate the production either for himself or for himself and another. (65-3-29 (e) NMSA 1935 Comp.)
2. If the answer to question one is "no," have the interests of all the owners been consolidated by communitization agreement or otherwise? YES ____ NO ____ . If answer is "yes," Type of Consolidation _____
3. If the answer to question two is "no," list all the owners and their respective interests below:

Owner	Land Description

SECTION B



CERTIFICATION

I hereby certify that the information in SECTION A above is true and complete to the best of my knowledge and belief. ORIGINAL SIGNED BY:
M. C. STEINDORF, JR.

Name M. C. Steindorf, Jr.
Position District Engineer
Company The British-American Oil Producing Co.
Date August 10, 1964

I hereby certify that the well location shown on the plat in SECTION B was plotted from field notes of actual surveys made by me or under my supervision, and that the same is true and correct to the best of my knowledge and belief.

Date Surveyed Dec. 21, 1963
Registered Professional Engineer and/or Land Surveyor <i>[Signature]</i>
Certificate No. 754

0 330 660 990 1320 1650 1980 2310 2640 2000 1500 1000 500 0

INSTRUCTIONS FOR COMPLETION OF FORM C-128

1. Operator shall furnish and certify to the information called for in Section A.
2. Operator shall outline the dedicated acreage for *both* oil and gas wells on the plat in Section B.
3. A registered professional engineer or land surveyor registered in the State of New Mexico or approved by the Commission shall show on the plat the location of the well and certify this information in the space provided.
4. All distances shown on the plat must be from the outer boundaries of the Section.
5. If additional space is needed for listing owners and their respective interests as required in question 3 of Section A, please use space below.