

**NEW MEXICO OIL CONSERVATION COMMISSION**  
**WELL LOCATION AND ACREAGE DEDICATION PLAT**

FORM C-128  
 Revised 5/1/57

HUBBS OFFICE O. C. C.

SEE INSTRUCTIONS FOR COMPLETING THIS FORM ON THE REVERSE SIDE OCT 1 3 52 PM '64

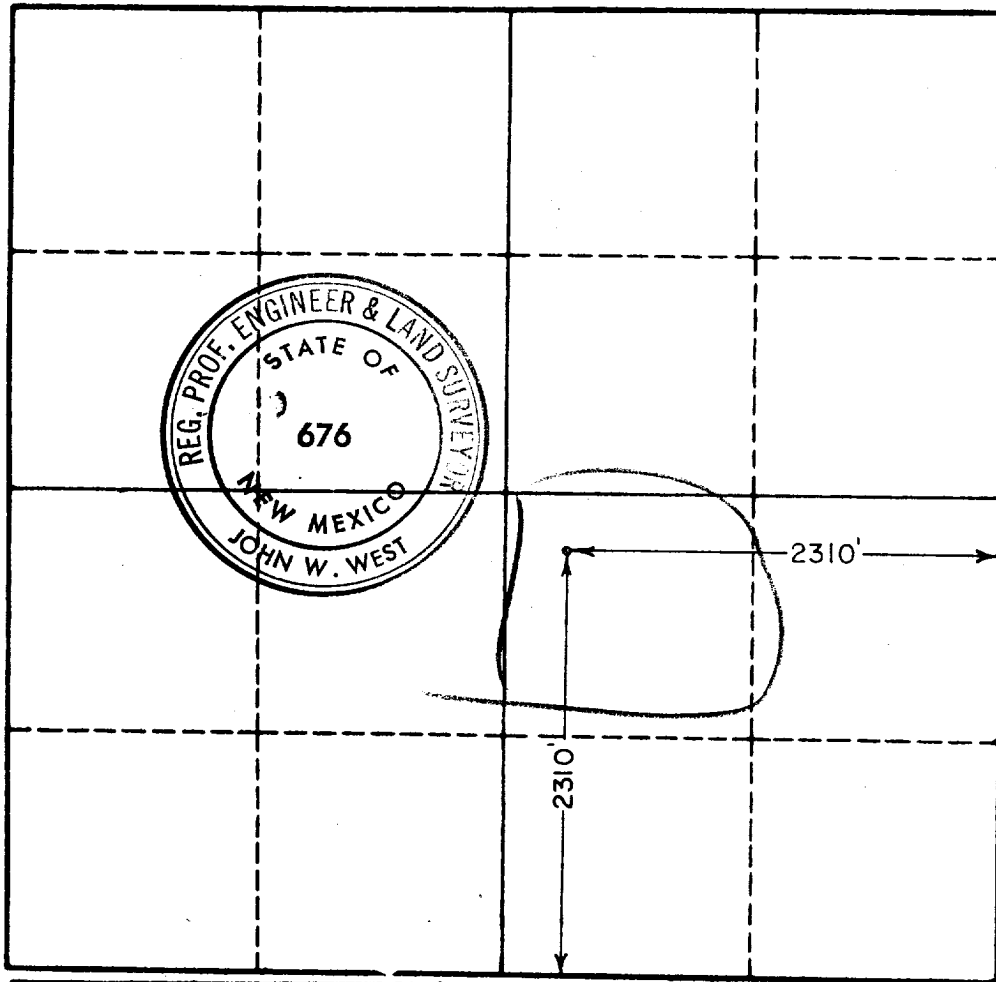
**SECTION A**

Operator <b>SHORELINE EXPLORATION CO.</b>		Lease <b>SNYDER</b>		Well No. <b>1</b>
Unit Letter <b>J</b>	Section <b>16</b>	Township <b>20 SOUTH</b>	Range <b>33 EAST</b>	County <b>LEA</b>
Actual Footage Location of Well: <b>2310</b> feet from the <b>SOUTH</b> line and <b>2310</b> feet from the <b>EAST</b> line				
Ground Level Elev. <b>          </b>	Producing Formation <b>Seven Rivers</b>	Pool <b>West Teas</b>	Dedicated Acreage: <b>40</b> Acres	

1. Is the Operator the only owner in the dedicated acreage outlined on the plat below? YES  NO  ("Owner" means the person who has the right to drill into and to produce from any pool and to appropriate the production either for himself or for himself and another. (65-3-29 (e) NMSA 1935 Comp.)
2. If the answer to question one is "no," have the interests of all the owners been consolidated by communitization agreement or otherwise? YES  NO . If answer is "yes," Type of Consolidation \_\_\_\_\_
3. If the answer to question two is "no," list all the owners and their respective interests below:

Owner	Land Description

**SECTION B**



**CERTIFICATION**

I hereby certify that the information in SECTION A above is true and complete to the best of my knowledge and belief.

*John W. West*  
 Name

**Vice-President**  
 Position

**Shoreline Exploration Co.**  
 Company

Date  
**September 30, 1964**

I hereby certify that the well location shown on the plat in SECTION B was plotted from field notes of actual surveys made by me or under my supervision, and that the same is true and correct to the best of my knowledge and belief.

Date Surveyed  
**AUG. 27, 1964**

Registered Professional Engineer and/or Land Surveyor, **JOHN W. WEST**

*John W. West*  
 Certificate No.  
**N. M. - P. E. & L. S. NO. 676**



NUMBER OF COPIES RECEIVED	
DISTRIBUTION	
SANTA FE	
FILE	
U.S.G.S.	
LAND OFFICE	
TRANSPORTER	OIL
	GAS
PRORATION OFFICE	
OPERATOR	

NEW MEXICO OIL CONSERVATION COMMISSION  
Santa Fe, New Mexico

Form G-101  
Revised (12/1/55)

HOBBS OFFICE O. C. C.

NOTICE OF INTENTION TO DRILL

Notice must be given to the District Office of the Oil Conservation Commission and approval obtained before drilling or recompletion begins. If changes in the proposed plan are considered advisable, a copy of this notice showing such changes will be returned to the sender. Submit this notice in QUINTUPPLICATE. One copy will be returned following approval. See additional instructions in Rules and Regulations of the Commission. If State Land submit 6 Copies Attach Form G- 128 in triplicate to first 3 copies of form G-101

Roswell, New Mexico  
(Place)

September 30, 1964  
(Date)

OIL CONSERVATION COMMISSION  
SANTA FE, NEW MEXICO

Gentlemen:

You are hereby notified that it is our intention to commence the Drilling of a well to be known as

**Shoreline Exploration Co.**

(Company or Operator)

**Snyder**

(Lease)

Well No. **1**, in **J** The well is  
(Unit)

located **2310'** feet from the **East** line and **2310'** feet from the **South** line of Section **16**, T. **20 S.**, R. **33 E.**, NMPM.

(GIVE LOCATION FROM SECTION LINE) **West Teas** Pool, **Lea** County

If State Land the Oil and Gas Lease is No. **E-4207**

If patented land the owner is.....

Address.....

We propose to drill well with drilling equipment as follows: **With rotary tools to 1250'; cable tools from 1250' to 3400'.**

The status of plugging bond is **Shoreline Exploration Co.**

Drilling Contractor **Cactus Drilling Co.**

**P. O. Box 1826**

**Hobbs, New Mexico**

We intend to complete this well in the **Seven Rivers**

formation at an approximate depth of **3400** feet.

CASING PROGRAM

We propose to use the following strings of Casing and to cement them as indicated:

Size of Hole	Size of Casing	Weight per Foot	New or Second Hand	Depth	Sacks Cement
12"	8-5/8"	24#	Used	1250'	500
8-3/4"	7"	17-26#	Used	2950'	25
<b>(if hole is commercial producer, then 7" casing will be perforated and cemented with 600 s.)</b>					
7-7/8"	4-1/2"	10.5#	Used	2900'-3400'	100

If changes in the above plans become advisable we will notify you immediately.

ADDITIONAL INFORMATION (If recompletion give full details of proposed plan of work.)

Approved **OCT 1 1964**, 19.....  
Except as follows:  
*Comply with P. 1117*

Sincerely yours,

**SHORELINE EXPLORATION CO.**  
(Company or Operator)

By **Charles B. Read**  
**Charles B. Read, Vice-President**

Position..... Send Communications regarding well to

Name **Shoreline Exploration Co.**

Address **1117 Fort Worth National Bank Bldg. Fort Worth, Texas**

OIL CONSERVATION COMMISSION

By.....