

RECEIVED BY

DEC -3 1985

NEW MEXICO OIL CONSERVATION COMMISSION  
WELL LOCATION AND ACREAGE DEDICATION PLAT

Form C-122  
Supersedes C-128  
Effective 1-1-65

All distances must be from the outer boundaries of the Section

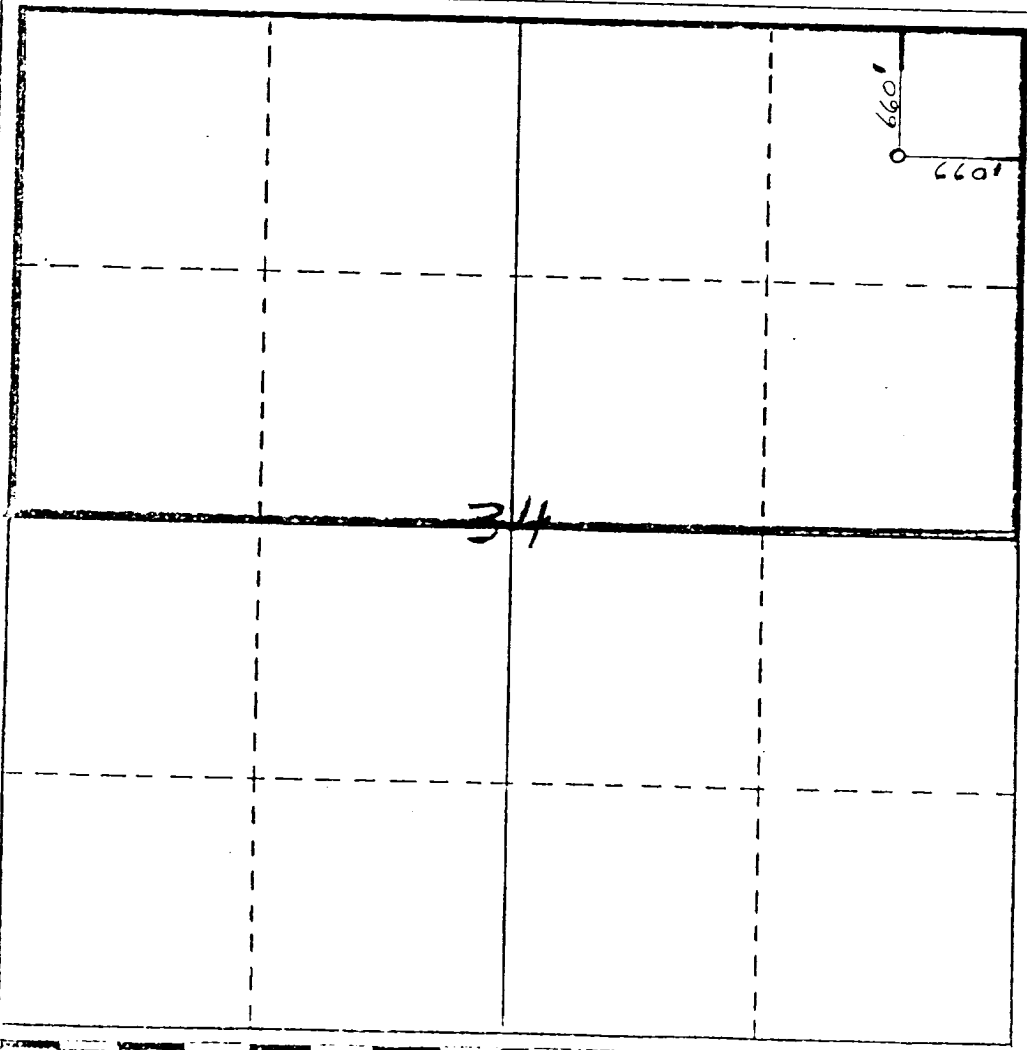
Operator O. C. D. Chama Petroleum Company		Lease Hot Tamale State		Well No. 1
Unit A	Section 34	Township 20S	Range 35E	County Lea
Actual Location of Well: 660 feet from the North line and 660 feet from the East line				
Gross Level Elev. 3680' GL	Producing Formation Morrow	Foot S.E. Lea	Dedicated Acreage 320	

1. Outline the acreage dedicated to the subject well by colored pencil or hatchure marks on the plat below.
2. If more than one lease is dedicated to the well, outline each and identify the ownership thereof (both as to working interest and royalty).
3. If more than one lease of different ownership is dedicated to the well, have the interests of all owners been consolidated by communitization, unitization, force-pooling, etc?

Yes  No If answer is "yes," type of consolidation \_\_\_\_\_

If answer is "no," list the owners and tract descriptions which have actually been consolidated. (Use reverse side of this form if necessary.) \_\_\_\_\_

No allowable will be assigned to the well until all interests have been consolidated (by communitization, unitization, forced-pooling, or otherwise) or until a non-standard unit, eliminating such interests, has been approved by the Commission.



CERTIFICATION

I hereby certify that the information contained herein is true and complete to the best of my knowledge and belief.

*Mark K. Nearburg*

Name

Mark K. Nearburg

Position

Land Manager & Agent

Company

Chama Petroleum Company

Date

12/2/85

I hereby certify that the well location shown on this plat was plotted from field notes of actual surveys made by me or under my supervision, and that the same is true and correct to the best of my knowledge and belief.

See original plat.

Date Surveyed

Registered Professional Engineer and/or Land Surveyor

Certificate No.