

NY
Hons 121
NEW MEXICO OIL CONSERVATION COMMISSION
WELL LOCATION AND ACREAGE DEDICATION PLAT

B-102
 Supersedes C-12R
 Effective 1-1-65

All distances must be from the outer boundaries of the Section

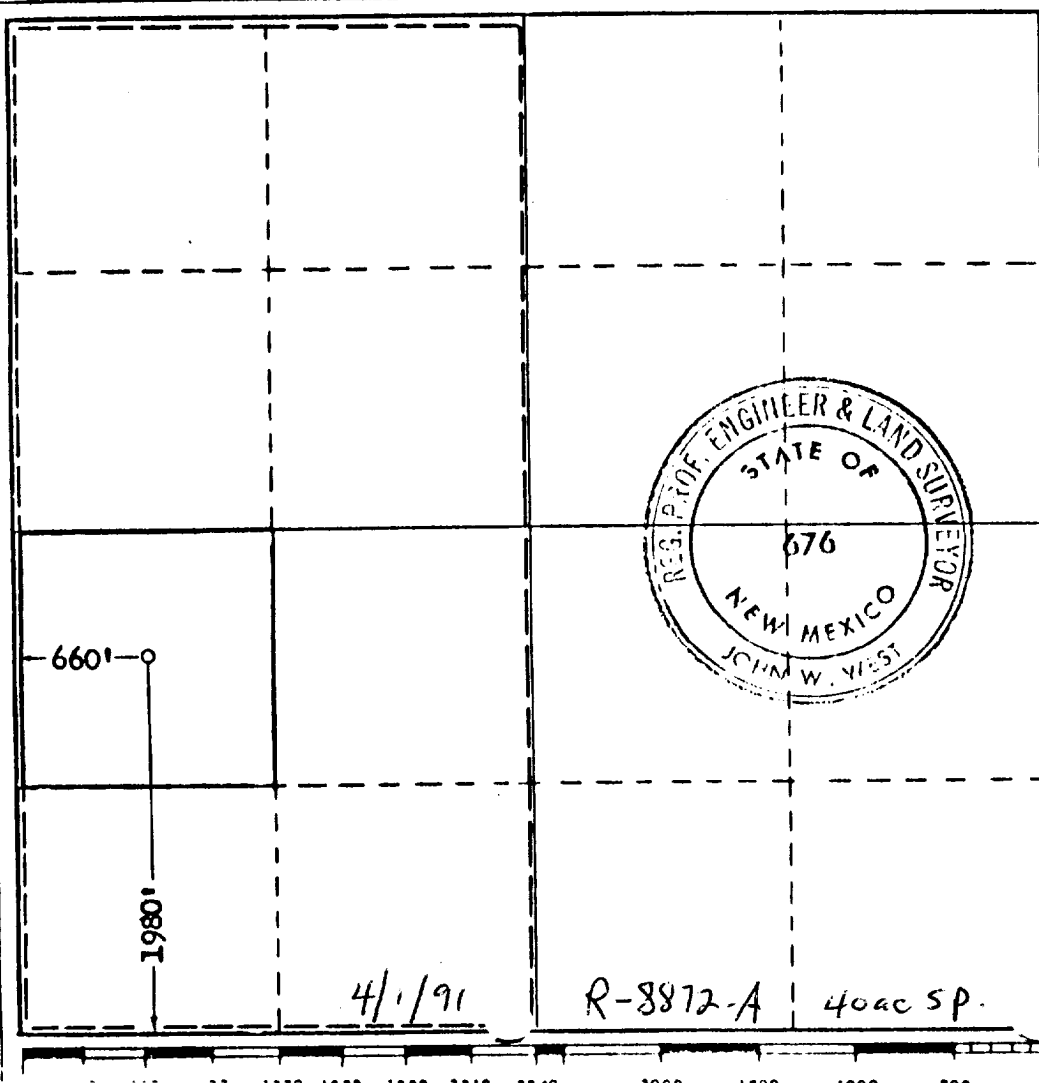
Operator <i>Strata Prod. Co.</i>		Lease <i>Gavilon Federal</i>			Well No. <i>#1</i>
MOR Oil Co., Inc.					
Unit Letter L	Section 33	Township 20 South	Range 33 East	County Lea	
Actual Footage Location of Well:					
660 feet from the west line and		1980 feet from the south line			
Ground Level Elev. 3645.5 GR	Producing Formation GR	Pool Wildcat	Dedicated Acreage: 40 Acres		

1. Outline the acreage dedicated to the subject well by colored pencil or hachure marks on the plat below.
2. If more than one lease is dedicated to the well, outline each and identify the ownership thereof (both as to working interest and royalty).
3. If more than one lease of different ownership is dedicated to the well, have the interests of all owners been consolidated by communitization, unitization, force-pooling, etc?

Yes No If answer is "yes," type of consolidation _____

If answer is "no," list the owners and tract descriptions which have actually been consolidated. (Use reverse side of this form if necessary.) _____

No allowable will be assigned to the well until all interests have been consolidated (by communitization, unitization, forced-pooling, or otherwise) or until a non-standard unit, eliminating such interests, has been approved by the Commission.



CERTIFICATION

I hereby certify that the information contained herein is true and complete to the best of my knowledge and belief.

Frank S. Morgan
Name

Position **Operator**

Company **MorOilCo, Inc.**

Date **November 9, 1987**

I hereby certify that the well location shown on this plat was plotted from field notes of actual surveys made by me or under my supervision, and that the same is true and correct to the best of my knowledge and belief.

Date Surveyed
April 14, 1973

Registered Professional Engineer and/or Land Surveyor

John W. West
Certificate No. **676**