

UNITED STATES
DEPARTMENT OF THE INTERIOR
GEOLOGICAL SURVEY

APPLICATION FOR PERMIT TO DRILL, DEEPEN, OR PLUG BACK

5. LEASE DESIGNATION AND SERIAL NO.

NM 13276

6. IF INDIAN, ALLOTTEE OR TRIBE NAME

7. UNIT AGREEMENT NAME

8. FARM OR LEASE NAME

Wallen Federal

9. WELL NO.

#8

10. FIELD AND POOL, OR WILDCAT

TeasPool, Yates, Rivers

11. SEC., T., R., M., OR BLK. AND SURVEY OR AREA

Sec. 18, T20S, R 34 E

12. COUNTY OR PARISH

Lea

13. STATE

New Mexico

1a. TYPE OF WORK

DRILL ☒

DEEPEN ☐

PLUG BACK ☐

b. TYPE OF WELL

OIL WELL ☒

GAS WELL ☐

OTHER

SINGLE ZONE ☐

MULTIPLE ZONE ☐

2. NAME OF OPERATOR

Walter W. Krug DBA Wallen Production Company

3. ADDRESS OF OPERATOR

P. O. Box 1960, Midland, Texas 79701

4. LOCATION OF WELL (Report location clearly and in accordance with any State requirements.)*

At surface

At proposed prod. zone

2310' SW Sec 18

14. DISTANCE IN MILES AND DIRECTION FROM NEAREST TOWN OR POST OFFICE*

28 miles W NW of Eunice, New Mexico

15. DISTANCE FROM PROPOSED*

LOCATION TO NEAREST PROPERTY OR LEASE LINE, FT. (Also to nearest drig. unit line, if any)

330'

16. NO. OF ACRES IN LEASE

80

17. NO. OF ACRES ASSIGNED TO THIS WELL

40

18. DISTANCE FROM PROPOSED LOCATION* TO NEAREST WELL, DRILLING, COMPLETED, OR APPLIED FOR, ON THIS LEASE, FT.

660'

19. PROPOSED DEPTH

3600

20. ROTARY OR CABLE TOOLS

Cabletool

21. ELEVATIONS (Show whether DF, RT, GR, etc.)

GR 3618 (Est)

22. APPROX. DATE WORK WILL START*

As soon as approved

23.

PROPOSED CASING AND CEMENTING PROGRAM

SIZE OF HOLE	SIZE OF CASING	WEIGHT PER FOOT	SETTING DEPTH	QUANTITY OF CEMENT
17"	16"	32#	100'	50 sxs class "C" neat
15"	13 3/8"	72#	325'	Mudded in, to be pulled later
12 1/2"	10 3/4"	42#	650'	Mudded in, to be pulled later
10"	8 5/8"	24# & 28#	1100'	Mudded in, to be pulled later
8"	7"	24#	3300'	735 sxs w/3% gel & cello flake
6 1/2"	4 1/2"	10 1/2#	650'	50sxs

AMENDMENTS: 1. When drilling below salt section a control head complete with flow line, control valve, and oil saver is to be installed ready for use.

2. A Gamma Ray-Compensated Neutron Log should be run from the base of the salt to the surface.

IN ABOVE SPACE DESCRIBE PROPOSED PROGRAM: If proposal is to deepen or plug back, give data on present productive zone and proposed new productive zone. If proposal is to drill or deepen directionally, give pertinent data on subsurface locations and measured and true vertical depths. Give blowout preventer program, if any.

24.

SIGNED

Walter W. Krug

TITLE

Engineer

DATE

6-3-75

(This space for Federal or State office use)

PERMIT NO.

APPROVAL DATE

APPROVED BY

TITLE

DATE

CONDITIONS OF APPROVAL, IF ANY:

RECEIVED

JUL 17 1976

OIL CONSERVATION COMM.
HODGES, H. M.

**NEW ICO OIL CONSERVATION COMMISSION
WELL LOCATION AND ACREAGE DEDICATION PLAT**

Form C-102
Supersedes C-128
Effective 1-1-65

All distances must be from the outer boundaries of the Section.

Operator WALLEN PRODUCTION COMPANY			Lease FEDERAL		Well No. 8
Unit Letter "K"	Section 18	Township 20-S	Range 34-E	County LEA	
Actual Footage Location of Well: <div style="display: flex; justify-content: space-between;"> 2310 feet from the SOUTH line and 2310 feet from the WEST line </div>					
Ground Level Elev: 3614	Producing Formation SEVEN RIVERS	Pool TEAS POOL, YATES		Dedicated Acreage: 40 Acres	

1. Outline the acreage dedicated to the subject well by colored pencil or hachure marks on the plat below.
2. If more than one lease is dedicated to the well, outline each and identify the ownership thereof (both as to working interest and royalty).
3. If more than one lease of different ownership is dedicated to the well, have the interests of all owners been consolidated by communitization, unitization, force-pooling, etc?

☐ Yes ☐ No If answer is "yes," type of consolidation _____

If answer is "no," list the owners and tract descriptions which have actually been consolidated. (Use reverse side of this form if necessary.) _____

No allowable will be assigned to the well until all interests have been consolidated (by communitization, unitization, forced-pooling, or otherwise) or until a non-standard unit, eliminating such interests, has been approved by the Commission.

	<p align="center">CERTIFICATION</p> <p><i>I hereby certify that the information contained herein is true and complete to the best of my knowledge and belief.</i></p> <p>Name _____</p> <p>Position _____</p> <p>Company _____</p> <p>Date _____</p> <p><i>I hereby certify that the well location shown on this plat was plotted from field notes of actual surveys made by me or under my supervision, and that the same is true and correct to the best of my knowledge and belief.</i></p> <p>Date Surveyed JUNE 27, 1974</p> <p>Registered Professional Engineer and/or Land Surveyor <i>[Signature]</i> MAX A. SCHUYMAN, JR.</p> <p>Certificate No. _____</p>
--	--

RECEIVED

JUL 17 1975

OIL CONSERVATION COMM.
HOODS, R. M.

Walter W. Krug DBA Wallen Production Company

DEVELOPMENT PLAN FOR SURFACE USE

Wallen Federal #8 Well
2310' FSL and 2310' FWL
Section 18, T 20 S,
R 34 E, Lea County,
New Mexico

The following discussion answers the items 1 through 12, concerning the above subject well.

1. Attached to this discussion are plats 1 & 2. Plat 1 shows all pertinent wells, the proposed location, flow lines, salt water line, tank battery and roads.
2. Plat 2 shows the cabletool rig location and pit. As you know, the minimum of surface acreage is used.
3. We are using existing lease road and just adding a 700' extension with an 8" caliche mat on it, because of the sand problems.
4. There will be a 2 3/8" flow line to the already existing flow line from Federal #6 well.
5. The drilling water will come from a commercial source; a local supply station.
6. The mud wastes from the mud pit will be rolled into a deep dozer ditch and covered (including old pit) with the new dirt from deep ditch.
7. The wire, cable, mud sacks, containers and waste barrels will be hauled off to an approved dump site upon completion or plugging of the well.
8. The restoration of the surface will be done upon completion or plugging of the well and will be accomplished as noted in item 6 above.

RECEIVED

JUL 17 1975

OIL CONSERVATION COMM.
HOBBBS, N. M.

WALLER PRODUCTION CO. Fed #8
NE/4 of SW/4 Sec 18, T20S, R34E, Lea Cty

17

County
Road

Proposed Well

Waller Prod. Co.
Fed 6
7 Fed.

Flowline
Waller Prod Co
Fed 8 R.G. Barten

4 Fed Waller Prod. Co.

1 AA

U.S.

Waller Prod. Co.
Fed.

2 SWD

000000
WT OR SEP

Jewett No. 8

Waller Fed 3
Prod Co

2 AA

U.S.

19

CSOC

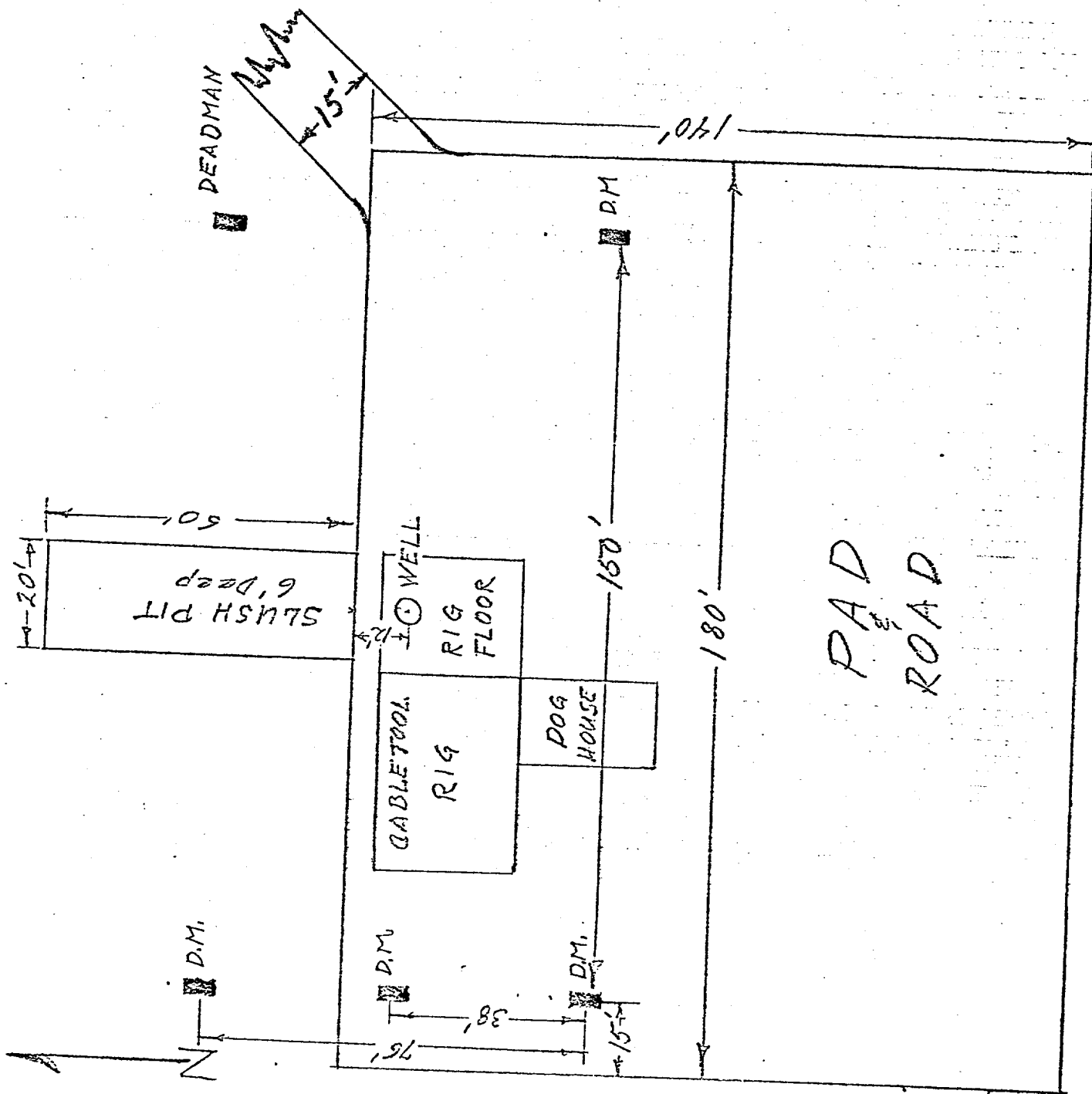
1

TEAS UNIT

RECEIVED

JUL 17 1975

OIL CONSERVATION COMM.
HOBE, N. M.



CALICHE PAD (0.0.0.)
8" Mat Compacted

DEADMAN
7" Pipe, 6' Long
6" Deep

1" = 30'

PAD
ROAD

RECEIVED

JUL 17 1975

OIL CONSERVATION COMM.
HOBBBS, N. M.

RECEIVED

JUN 23 1975

AGREEMENT

U. S. GEOLOGICAL SURVEY
HOBBS, NEW MEXICO

Harroun and Haworth and Noranda Exploration, Inc. have no objection to Walter W. Krug, dba Wallen Production Co.'s casing program on a well located in 2310 FSL and 2310 FWL of Section 18, T 20 S, R 34 E, Lea County, New Mexico (said well to be 3600 feet plus or minus) using the USGS approved requirements and that Wallen Production Co. will furnish Noranda Exploration, Inc. an electric log, gamma ray and neutron run at as low a speed as possible through the salt section, and that Wallen Production Co. will build its brine with KCl through the interval of the 10th ore zone and allow Noranda Exploration, Inc.'s man to study the drill cuttings through that section.

This is as per the conversation and agreement with James Brewer, Geologist, Noranda Exploration, Inc.

DATED this 16 day of June, 1975.

HARROUN AND HAWORTH

By E. S. Harroun

NORANDA EXPLORATION, INC.

By James A. Brewer

Walter W. Krug, dba Wallen Production Co., does hereby agree to abide by the terms of this consent as outlined above.

WALTER W. KRUG, dba
WALLEN PRODUCTION CO.

By Walter W. Krug

RECEIVED

JUL 17 1975

OIL CONSERVATION COMM.
HOBBS, N. M.