

P&A PROCEDURE

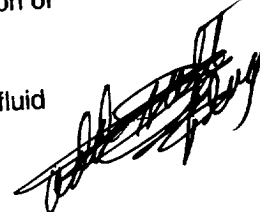
OCD
mkp

Well Name: Theodore Anderson Com # 013
API Number: 30-025-25292
Coordinates: 2223' FSL & 853' FEL Unit I
S - T - R: 8 - 20S - 37E
County / State: Lea, NM
Drilled: 1976

Operator: Chevron
Field: Eumont Gas
Date: 8/8/01
By: DCD

Provide 24 hr Notification to NMOCD of Pending Operations

1. MI Benterra equip. Hold pre-job safety mtg and spot equipment. Check 7" csg, 95/8" x 7" and 133/8" x 95/8" annuli for pressure.
 2. ND WH and install well control equip.
 3. Check btm w/ SL (4403' PBD). Record FL. Displace wellbore fluids above open perms with fresh-water.
 4. Insert 7" wiper plug (cored to allow fluid bypass) into csg and push to 3100' w/ slickline.
 5. Surface pour 22 cu ft of ZONITE to set 100' btm plug from 3000' - 3100'. Set plug in stages, check w/ SL to assure bridges are not occurring and required plug height is achieved. Pour at rate that minimizes potential to bridge. After setting plug, add water as necessary to assure hydration of plug. Remove well control equip and NU WH to secure well.
 6. Move off location and wait minimum of 48 hours for plug to hydrate. Assure that an adequate fluid level is maintained to hydrate plug.
 7. MI PU and ancillary equipment for cutting/pulling 7" csg. Hold safety pre-job safety meeting. Check 7" casing and annuli for pressure, RU PU and equipment. Load hole w/ freshwater.
 8. RU equip to pull stretch on casing to determine free-point. If free-point is 100' above 95/8" csg shoe @ 2748':
 - a. Release from csg and set 100' (22 cu ft) ZONITE plug inside csg from 2698 - 2798'.
 - b. Set wiper rubber 25' below free-point, cap w/ 10' (2 cu ft) of ZONITE and cut-off 7" csg at free-point and POH LD. Set 100' (44 cu ft) ZONITE on top of stub.
- If free-point is 50' or more below 95/8" csg shoe @ 2748, release from csg:
- a. Set wiper rubber 2815', cap w/ 10' (2 cu ft) of ZONITE and cut-off 7" csg at 2798'.
POH LD csg.
 - b. Set 100' (60 cu ft) ZONITE plug from 2698 - 2798' on top of stub and across 95/8" shoe.
9. Check top of plug w/ SL. If necessary, fill casing w/ freshwater.
 10. Push cored 95/8" wiper plug to 1255' w/ slickline.



Theodore Anderson Com #13

P&A Procedure

Page 2

11. Pour 100' (44 cu ft) ZONITE and set plug across top of salt from 1155 - 1255'. Set plug in stages using precautions as in Step 5.
12. Push cored 95/8" wiper plug to 367' w/ slickline.
13. Pour 100' (44 cu ft) ZONITE and set plug across 133/8" from 267 - 367'. Set plug in stages using precautions as in Step 5.
14. Insert & push 95/8" wiper plug to 30' w/ SL. Fill csg w/ ZONITE to 3' from surface (12 cu ft). Add water as needed to hydrate plug.
15. Secure wellbore and RD equip.
16. Allow 48 hours for ZONITE to hydrate, remove WH, cut off casings 3' below GL and cap wellbore.
17. Install dry hole marker stamped w/ required well identification, 4" OD x 4' above GL.
18. Remove all equip and cut deadmen below GL.
19. Turn over to Chevron for any surface remediation work.

Estimated ZONITE Requirements:

184

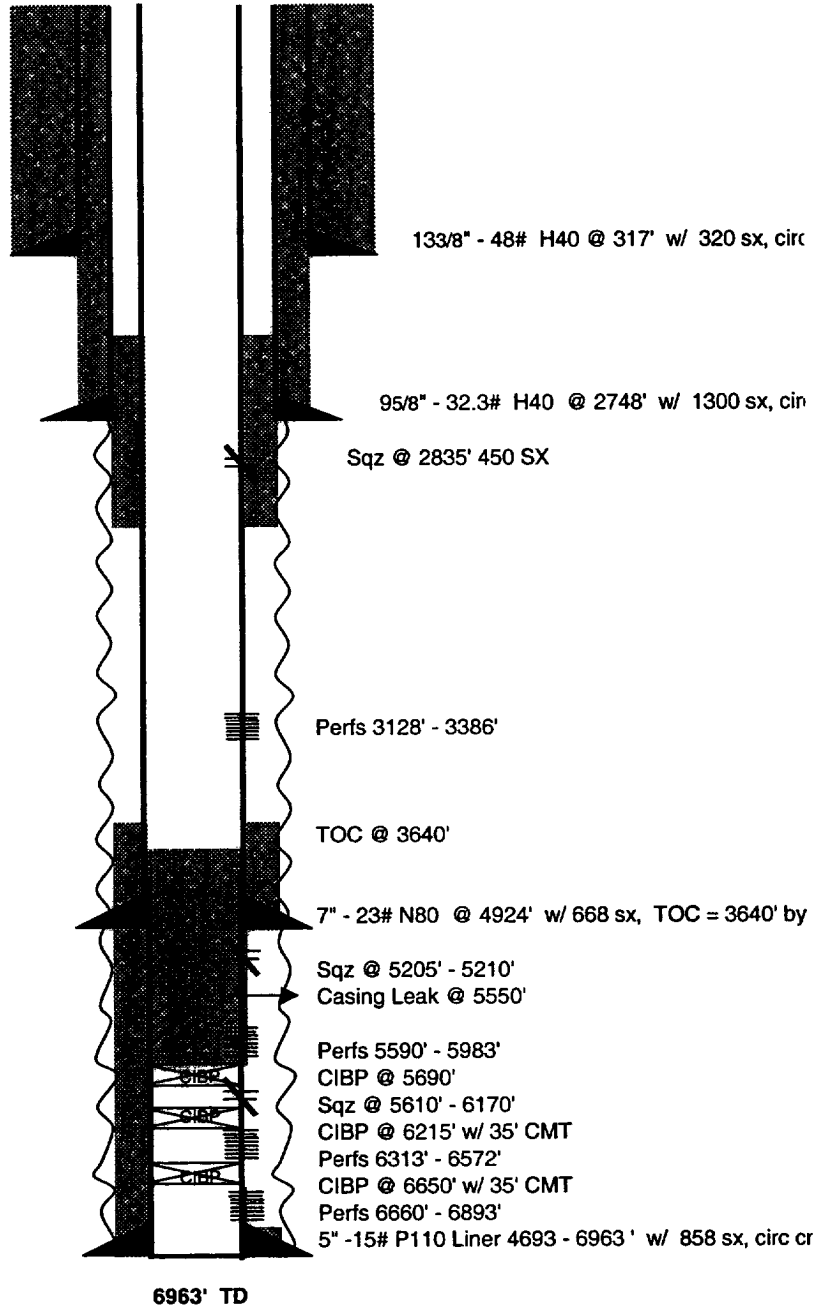
**WELL PLANNING SHEET
EXISTING CONFIGURATION**

Well Name: Theodore Anderson Com # 013
 API Number: 30-025-25292
 Coordinates: 2223' FSL & 853' FEL Unit I
 S - T - R: 8 - 20S - 37E
 County / State: Lea, NM
 Drilled: 1976

Operator: Chevron
 Field: Eumont Gas
 Date: July 27, 2001
 By: M. Bondy

RKB = 13'

Formation Tops	
Salt	1205'
Queen	3125'
Penrose	3255'
Grayburg	3422'
Glorieta	5123'
Blinebry	5588'
Tubb	6313'



WELL PLANNING SHEET
Proposed P&A

Well Name: Theodore Anderson Com # 013
API Number: 30-025-25292
Coordinates: 2223' FSL & 853' FEL Unit I
S - T - R: 8 - 20S - 37E
County / State: Lea, NM
Drilled: 1976

Operator: Chevron
Field: Eumont Gas
Date: July 27, 2001
By: M. Bondy

RKB = 13'

Formation Tops	
Salt	1205'
Queen	3125'
Penrose	3255'
Grayburg	3422'
Glorieta	5123'
Blinebry	5588'
Tubb	6313'

ZONITE Plugs	
3 - 30'	
267 - 367	
2000 - 2100'	depth approx, to be placed at stub
2698 - 2798'	
3000 - 3100'	

