

COUNTY **LEA** FIELD **Undesignated** STATE **NM**  
 OPR **CLEARY PETROLEUM CORP.** API **30-025-25780**  
 NO **1** LEASE **Felmont Federal** MAP  
**Sec 25, T20S, R32E** CO-ORD  
**760' FSL, 660' FEL of Sec** **9-3-24 NM**  
**1-1/2 mi SE/Halfway** SPD **1-12-78** CMP **7-19-78**

WELL CLASS:	INIT D		FIN DG		ELEV	LWS
	FORMATION	DATUM	FORMATION	DATUM		
ID	14,170' (MRRW)		PBD		13,985'	

IP (Morrow) Perfs 13,539-619' F 4000 MCFGPD + 22 BC. Pot based on 24 hr test thru 21/64" chk. GOR (NR); gty 57.8; CF Pkr; TP 2478#

CONSR **Warton** OPRSELEV **3588' GL** PD **14,000' RT**

- F.R. 1-9-78 (Morrow) (PROPOSED BHL: 1320' FNL, 1320' FEL of Sec)
- 1-18-78 Drlg 903'
- 1-24-78 Drlg 1905' salt & anhy
- 1-31-78 Drlg 3172' lm
- 2-7-78 TD 3701'; Fsg
- 2-14-78 TD 5196' lm; Prep Run 9 5/8" Csg
- 2-23-78 Drlg 6523' lm & sd
- 3-1-78 TD 7394'; Prep Run Dyna-Drill
- 3-7-78 Drlg 7749'
- 3-14-78 TD 7798'; Circ out cmt @ 6070'
- 3-21-78 TD 7798'; Drlg by @ 6637' lm & sd PB to 5975'
- 3-28-78 TD 7798'; Drlg by @ 7429'
- 4-4-78 TD 8389'; Rmg @ 6155'
- 4-12-78 Drlg 9450'

9-3-24 NM

\*

- (Proposed BHL: 1320' FNL, 1320' FEL of Sec)
- 1-18-78 Drlg 903'
  - 1-24-78 Drlg 1905' salt & anhy
  - 1-31-78 Drlg 3172' lm
  - 2-7-78 TD 3701'; Fsg
  - 2-14-78 TD 5196' lm; Prep Run 9 5/8" csg
  - 2-23-78 Drlg 6523' lm & sd
  - 3-1-78 TD 7394'; Prep Run Dyna-Drill
  - 3-7-78 Drlg 7749'
  - 3-14-78 TD 7798'; Circ out cmt @ 6070'
  - 3-21-78 TD 7798'; Drlg by @ 6637' lm & sd PB to 5975'
  - 3-28-78 TD 7798'; Drlg by @ 7429'
  - 4-4-78 TD 8389'; Rmg @ 6155'
  - 4-12-78 Drlg 9450'
  - 4-18-78 Drlg 10,009' sh

9-3-24 NM

LEA  
CLEARY PETROLEUM CORP.

Undesignated  
1 Felmont Federal  
Sec 25, T20S, R32E

NM  
Page #2

4-18-78 Drlg 10,009' sh  
4-24-78 Drlg 10,448'  
5-3-78 Drlg 11,150' lm, sd, & sh  
5-9-78 Drlg 11,755' sh, lm, & sd  
5-16-78 Drlg 12,350' sh  
5-23-78 Drlg 12,811' lm, sh & sd  
5-31-78 Drlg 13,153' sd, lm & sd.  
6-6-78 Drlg 13,613'  
6-13-78 TD 13,648'; Drlg by @ 13,436'

LEA  
CLEARY PETROLEUM CO.

Undesignated  
1 Felmont Federal  
Sec 25, T20S, R32E

NM  
Page #2

4-24-78 Drlg 10,448'  
5-3-78 Drlg 11,150' lm, sd & sh  
5-9-78 Drlg 11,755' sh, lm & sd  
5-16-78 Drlg 12,350' sh  
5-23-78 Drlg 12,811' lm, sh & sd  
5-31-78 Drlg 13,153' sh, lm & sd  
6-6-78 Drlg 13,613'  
6-13-78 TD 13,648'; Drlg by @ 13,436'  
PB to 13,334'  
6-20-78 TD 13,648'; PBD 13,343'; Prep DOC  
6-26-78 TD 13,648'; Drlg by @ 13,535'  
7-5-78 TD 14,170'; Circ Samp  
7-11-78 TD 14,170'; MORT

7-18-78 TD 14,170'; PBD 13,996'; Tstg. Tbg.  
Perf (Morrow Sand) 13,539-549', 13,569-573',  
13,599-619' w/1 SPF  
7-24-78 TD 14,170'; PBD 13,996'; SI  
8-1-78 TD 14,170'; PBD 13,996'; SI  
9-11-78 TD 14,170'; PBD 13,996'; Suspended Operations  
LOGS RUN: MSMG, CCL, CBND  
9-16-78 COMPLETION ISSUED

9-3-24 NM  
IC 30-025-70005-78

COUNTY	LEA	FIELD	STATE	NM	
OPR	CLEARY PETROLEUM CORP.			API	30-025-25780
NO	1	LEASE	Felmont Federal	MAP	
	Sec 25, T20S, R32E			CO-ORD	9-3-24 NM
	760' FSL, 660' FEL of Sec			SPD	1-12-78
	1-1/2 mi SE/Halfway			CMP	7-19-78

LOG	WELL CLASS: INIT <b>D</b> FIN <b>DG</b>		ELEV		L.S.
	FORMATION	DATUM	FORMATION	DATUM	
20" at 1212' w/2100 sx					
13 3/8" at 2800' w/2250 sx					
9 5/8" at 5196' w/1700 sx					
5 1/2" at 14,127' w/900 sx					
	ID	14,170' (MRRW)	PBD	13,985'	

IP (Morrow) Perfs 13,539-619' F 4000 MCFGPD + 22 BC. Pot based on 24 hr test thru 21/64" chk. GOR (NR); gty 57.8; CP Pkr; TP 2478#

CONTR	Warton	OPRS ELEV	3588' GL	PD	14,000' RT
-------	--------	-----------	----------	----	------------

- F.R. 1-9-78
- (Morrow)
- (PROPOSED BHL: 1320' FNL, 1320' FEL of Sec)
- 1-18-78 Drlg 903'
- 1-24-78 Drlg 1905' salt & anhy
- 1-31-78 Drlg 3172' lm
- 2-7-78 TD 3701'; Fsg
- 2-14-78 TD 5196' lm; Prep Run 9 5/8" Csg
- 2-23-78 Drlg 6523' lm & sd
- 3-1-78 TD 7394'; Prep Run Dyna-Drill
- 3-7-78 Drlg 7749'
- 3-14-78 TD 7798'; Circ out cmt @ 6070'
- 3-21-78 TD 7798'; Drlg by @ 6637' lm & sd  
PB to 5975'
- 3-28-78 TD 7798'; Drlg by @ 7429'
- 4-4-78 TD 8389'; Rmg @ 6155'
- 4-12-78 Drlg 9450'

9-3-24 NM

\*

LEA  
CLEARY PETROLEUM CORP.

Undesignated  
1 Felmont Federal  
Sec 25, T20S, R32E

NM  
Page #2

4-18-78 Drlg 10,009' sh  
4-24-78 Drlg 10,448'  
5-3-78 Drlg 11,150' lm, sd, & sh  
5-9-78 Drlg 11,755' sh, lm, & sd  
5-16-78 Drlg 12,350' sh  
5-23-78 Drlg 12,811' lm, sh & sd  
5-31-78 Drlg 13,153' sd, lm & sd  
6-6-78 Drlg 13,613'  
6-13-78 TD 13,648'; Drlb by @ 13,436'  
PB to 13,334'  
6-20-78 TD 13,648'; PBD 13,343'; Prep DOC  
6-26-78 TD 13,648'; Drlb by @ 13,535'

9-3-24 NM

7-5-78 TD 14,170'; Circ Samp  
7-11-78 TD 14,170'; MORT  
7-18-78 TD 14,170'; PBD 13,985'; Tstg Tbg  
Perf (Morrow Sand) 13,539-549', 13,569-573',  
13,599-619' w/1 SPF  
7-24-78 TD 14,170'; PBD 13,985'; SI  
8-1-78 TD 14,170'; PBD 13,985'; SI  
9-25-78 TD 14,170'; PBD 13,985'; Complete  
Natural  
LOGS RUN: MSMG, CCL, CBND  
9-16-78 COMPLETION ISSUED  
9-30-78 RE-ISSUE OF SUSPENDED COMPLETION

9-3-24 NM  
IC 30-025-70005-78

COUNTY LEA FIELD Undesignated STATE NM  
 OPR CLEARY PETROLEUM CORP. API 30-025-25780  
 NO 1 LEASE Felmont Federal MAP  
Sec 25, T20S, R32E CO-ORD  
760' FSL, 660' FEL of Sec 9-3-24 NM  
1 1/2 mi SE/Halfway SPD 1-12-78 CMP 9-11-78

CSG  
 20" at 1212' w/2100 sx  
 13 3/8" at 2800' w/2250 sx  
 9 5/8" at 5196' w/1700 sx  
 5 1/2" at 14,170' w/900 sx

WELL CLASS: IN ID		FIN SUS LLEV	
FORMATION	DATUM	FORMATION	DATUM
ID	<u>14,170' (MRRW)</u>	PHD	<u>13,996'</u>

SUSPENDED OPERATIONS

CONTR Warton OPRS ELEV 3588' GL PD 14,000' RL

F.R. 1-9-78  
 (Morrow)  
 (Proposed BHL: 1320' FNL, 1320' FEL of Sec)  
 1-18-78 Drlg 903'  
 1-24-78 Drlg 1905' salt & anhy  
 1-31-78 Drlg 3172' lm  
 2-7-78 TD 3701'; Fsg  
 2-14-78 TD 5196' lm; Prep Run 9 5/8" csg  
 2-23-78 Drlg 6523' lm & sd  
 3-1-78 TD 7394'; Prep Run Dyna-Drill  
 3-7-78 Drlg 7749'  
 3-14-78 TD 7798'; Circ out cmt @ 6070'  
 3-21-78 TD 7798'; Drlg by @ 6637' lm & sd  
 PB to 5975'  
 3-28-78 TD 7798'; Drlg by @ 7429'  
 4-4-78 TD 8389'; Rmg @ 6155'  
 4-12-78 Drlg 9450'  
 4-18-78 Drlg 10,009' sh

9-3-24 NM

\*

LEA  
CLEARY PETROLEUM CO.

Undesignated  
1 Felmont Federal  
Sec 25, T20S, R32E

NM  
Page #2

4-24-78 Drlg 10,448'  
5-3-78 Drlg 11,150' lm, sd & sh  
5-9-78 Drlg 11,755' sh, lm & sd  
5-16-78 Drlg 12,350' sh  
5-23-78 Drlg 12,811' lm, sh & sd  
5-31-78 Drlg 13,153' sh, lm & sd  
6-6-78 Drlg 13,613'  
6-13-78 TD 13,648'; Drlg by @ 13,436'  
PB to 13,334'  
6-20-78 TD 13,648'; PBD 13,343'; Prep DOC  
6-26-78 TD 13,648'; Drlg by @ 13,535'  
7-5-78 TD 14,170'; Circ Samp  
7-11-78 TD 14,170'; MORT

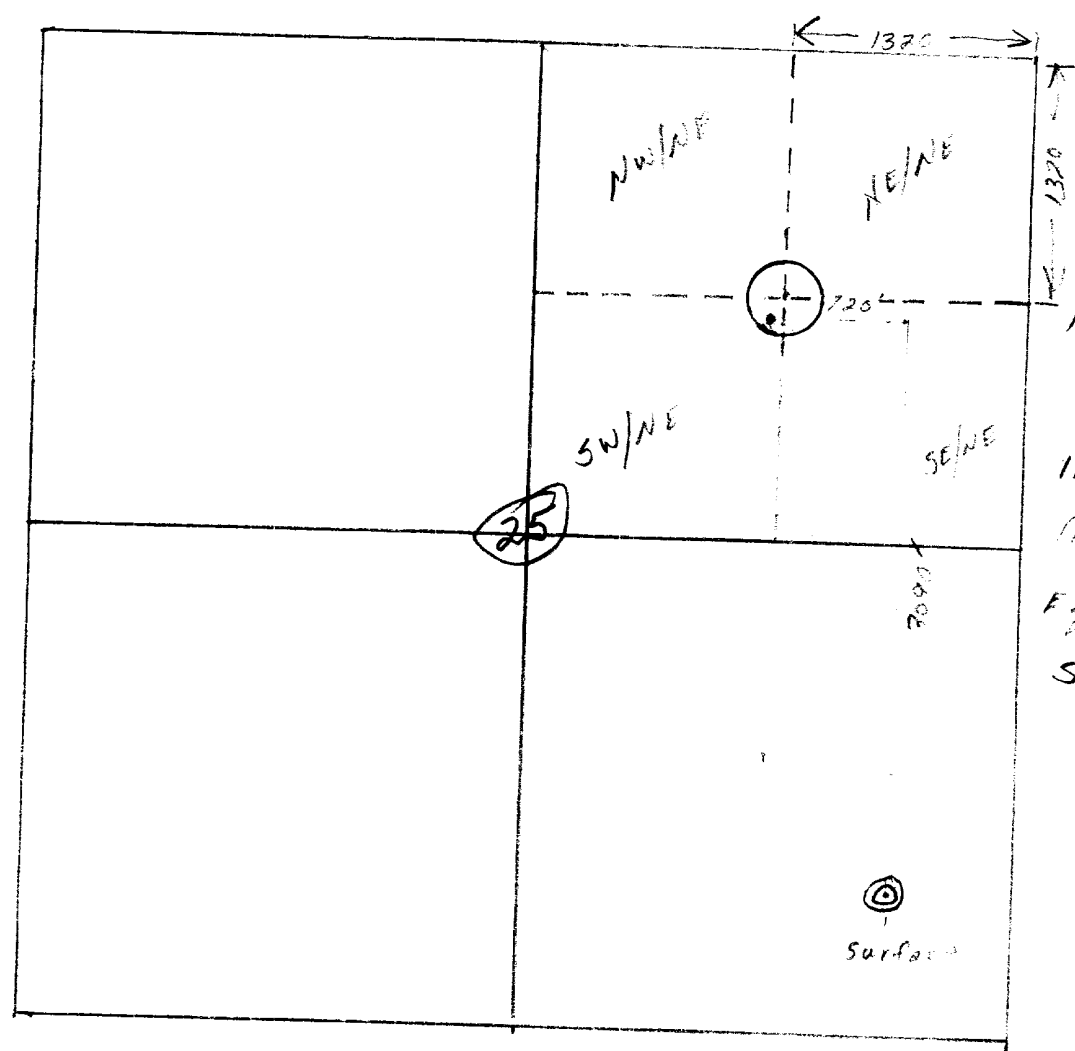
7-18-78 TD 14,170'; PBD 13,996'; Tstg. Tbg.  
Perf (Morrow Sand) 13,539-549', 13,569-573',  
13,599-619' w/1 SPF  
7-24-78 TD 14,170'; PBD 13,996'; SI  
8-1-78 TD 14,170'; PBD 13,996'; SI  
9-11-78 TD 14,170'; PBD 13,996'; Suspended Operations  
LOGS RUN: MSMG, CCL, CBND  
9-16-78 COMPLETION ISSUED

9-3-24 NM  
IC 30-025-70005-78

9/15/76

Bottom 420' west surface loc.  
 Bottom 3090' North " "

460' south  
 460' east Sec. 25



Bottom of  
 1380' from East  
 1430' from North  
 or  
 120' from N/quarter  
 line & 60' from  
 Equate line of  
 SW/NE quarter  
 @ loc

200' from point 1300/N & 1320/E

Well Bottom at point 133' from point 1320/N & 1420/E

Scale 1" = 100'

John R

NEW MEXICO OIL CONSERVATION COMMISSION  
WELL LOCATION AND ACREAGE DEDICATION PLAN

Form C-102  
Supersedes C-128  
Effective 1-1-63

All distances must be from the outer boundaries of the Section.

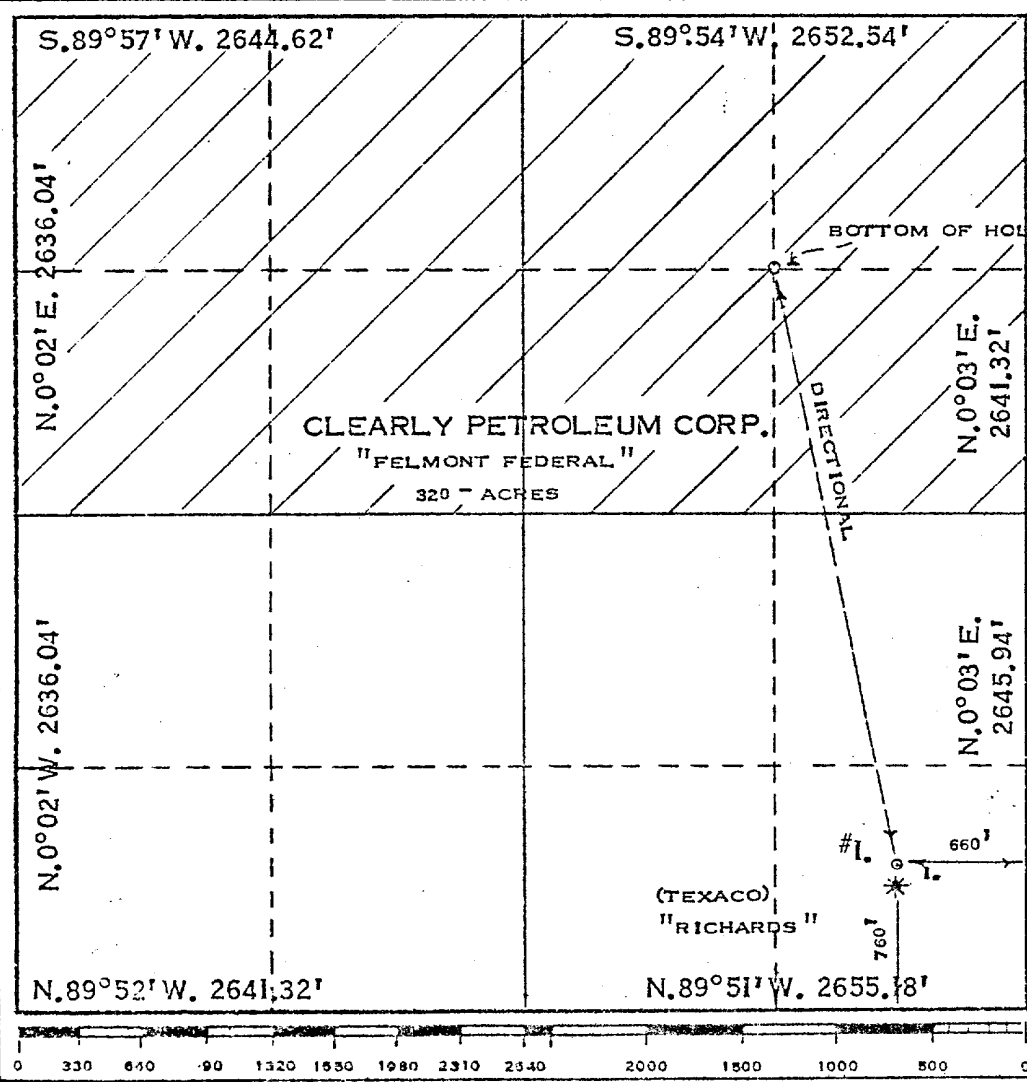
Operator <b>CLEARLY PETROLEUM CORP.</b>		Lease <b>FELMONT FEDERAL</b>		Well No. <b>1</b>
Unit Letter <b>"P"</b>	Section <b>25</b>	Township <b>20 - S</b>	Range <b>32 - E</b>	County <b>LEA</b>
Actual Footage Location of Well: <b>760</b> feet from the <b>SOUTH</b> line and <b>660</b> feet from the <b>EAST</b> line				
Ground Level Elev. <b>3588</b>	Producing Formation <b>MORROW</b>	Pool <b>SOUTH SALT LAKE</b>	Dedicated Acreage: <b>320</b> Acres	

1. Outline the acreage dedicated to the subject well by colored pencil or hachure marks on the plat below.
2. If more than one lease is dedicated to the well, outline each and identify the ownership thereof (both as to working interest and royalty).
3. If more than one lease of different ownership is dedicated to the well, have the interests of all owners been consolidated by communitization, unitization, force-pooling, etc?

Yes  No If answer is "yes," type of consolidation \_\_\_\_\_

If answer is "no," list the owners and tract descriptions which have actually been consolidated. (Use reverse side of this form if necessary.) \_\_\_\_\_

No allowable will be assigned to the well until all interests have been consolidated (by communitization, unitization, forced-pooling, or otherwise) or until a non-standard unit, eliminating such interests, has been approved by the Commission.



CERTIFICATION

I hereby certify that the information contained herein is true and complete to the best of my knowledge and belief.

Name: Buddy J. Kuyt  
 Position: District Production Manager  
 Company: Clearly Petroleum Corporation  
 Date: November 18, 1977

I hereby certify that the well location shown on this plat was plotted from field notes of actual surveys made by me or under my supervision, and that the same is true and correct to the best of my knowledge and belief.

Date Surveyed: NOVEMBER 15, 1977  
 Registered Professional Engineer and/or Land Surveyor: MAX A. SCHUMANN JR.  
 Certificate No. 1510

\*



RECEIVED

8 - 1977

OIL CONSERVATION COMM.  
HOBBS, N. M.