

NEW MEXICO OIL CONSERVATION COMMISSION
WELL LOCATION AND ACREAGE DEDICATION PLAT

Form C-102
Supersedes C-128
Effective 1-1-65

All distances must be from the outer boundaries of the Section

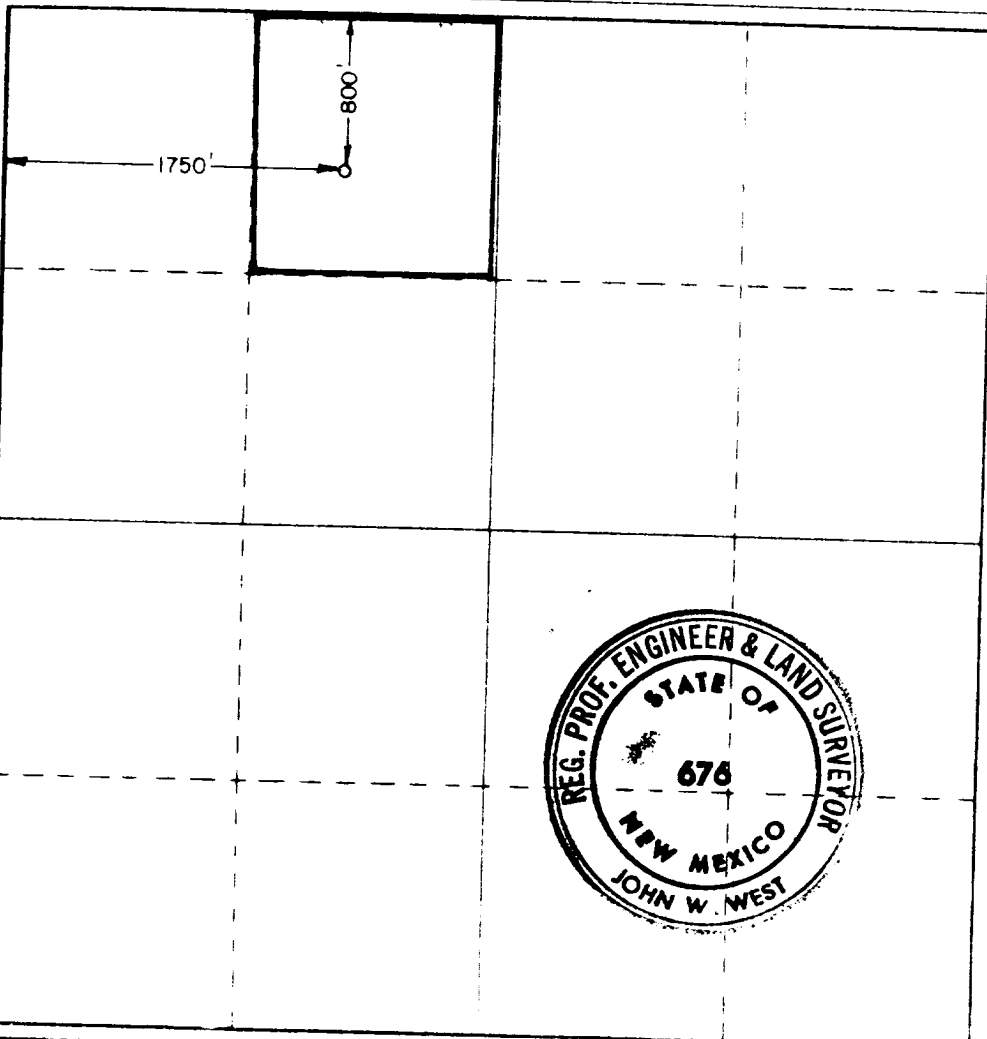
Operator Amerada Hess Corp.			Lease Monument Abo Unit		Well No. 1
Unit Letter C	Section 2	Township 20 South	Range 36 East	County Lea	
Actual Footage Location of Well: 800 feet from the North line and 1750 feet from the West line					
Ground Level Elev. 3597.7	Producing Formation Abo Reef		Pool Monument/Abo	Dedicated Acreage: 40.26 Acres	

1. Outline the acreage dedicated to the subject well by colored pencil or hachure marks on the plat below.
2. If more than one lease is dedicated to the well, outline each and identify the ownership thereof (both as to working interest and royalty).
3. If more than one lease of different ownership is dedicated to the well, have the interests of all owners been consolidated by communitization, unitization, force-pooling, etc?

Yes No If answer is "yes," type of consolidation Unitization

If answer is "no," list the owners and tract descriptions which have actually been consolidated. (Use reverse side of this form if necessary.) _____

No allowable will be assigned to the well until all interests have been consolidated (by communitization, unitization, forced-pooling, or otherwise) or until a non-standard unit, eliminating such interests, has been approved by the Commission.



CERTIFICATION

I hereby certify that the information contained herein is true and complete to the best of my knowledge and belief

H.O. Porter H.O. Porter
Name

Supv. Drilling Admin. Svcs.
Position

Amerada Hess Corporation
Company

May 30, 1980
Date

I hereby certify that the well location shown on this plat was plotted from field notes of actual surveys made by me or under my supervision, and that the same is true and correct to the best of my knowledge and belief.

Date Surveyed
May 20, 1980

Registered Professional Engineer
and/or Land Surveyor

John W. West

Cert. No. **JOHN W. WEST 676**
PATRICK A. ROMER 3000

RECEIVED
JUN 20 1980
OIL CONSERVATION DIV.

DRILLING SERVICES
1980 MAY 29 AM 9:43
TULSA

ELI
Convent Bond Log