

COUNTY LEA FIELD Wildcat STATE NM
 OPR SUPERIOR OIL CO., THE API 30-025-26952
 NO 1 LEASE West Lynch Deep Unit MAP
Sec 28, T20S, R34E (COORD)
660 FSL, 2310 FEL of Sec 11-1-26 NM
19 mi S/Buckeye SPD 6-15-80 CMP 9-30-80

CSC	WELL CLASS: INIT WF FIN WFD LSE. CODE			
	FORMATION	DATUM	FORMATION	DATUM
20-1622-1900 sx				
13 3/8-3400-2200 sx				
9 5/8-5300-1380 sx				
5 1/2-13,875-2050 sx				
	TD 13,875 (MRRW)	PBD	13,771	

IP (Morrow) Perfs 13,724-740 F 2753 MCFGPD. Pot based on 24 hr test thru 24/64 chk. GOR (NR); gty (NR); CP Pkr; TP (NR)

CONTR McVay #9 OPRSELEV 3728 GL, 3751 DF PD 14,800 RT

- F.R. 7-28-80
(Morrow)
- 11-1-80 AMEND OPERATOR & ZONE: Formerly reported as Union Oil Co. of California & Silurian
- 8-5-80 Drlg 12,624
- 8-12-80 Drlg 13,500
- 8-18-80 TD 13,875; Prep Log
DST (Morrow) 13,277-525, op 1 hr 15 mins, GTS in 10 mins @ 145 MCFGPD, RO 3415 FT G&WC COND + 3031 WCUSH (Sampler rec 1.3 CFTG 200 CC COND), 1 hr ISIP 6809, FP 1717-1945, 4 hr FSIP 6809, HP 7150-7093, BHT 190 deg
- 8-26-80 TD 13,875; WOCU
- 9-11-80 TD 13,875; PBD 13,771; Prep Perf
- 9-18-80 TD 13,875; PBD 13,771; Tstg
Perf (Morrow) 13,724-740 w/4 SPF
Natural

11-1-26 NM

LEA Wildcat NM
SUPERIOR OIL CO., THE 1 West Lynch Deep Unit Page #2
Sec 28, T20S, R34E

9-18-80 Continued
Flwd @ 3000 MCFGPD thru 1/4 chk (13,724-740)
9-30-80 TD 13,875; PBD 13,771; WOSP
10-27-80 TD 13,875; PBD 13,771; Complete
(Morrow) Discovery: No Suggested Field Name
Will Re-Issue if Additional information
becomes available
11-1-80 COMPLETION ISSUED

11-1-26 NM
IC 30-025-70369-80

NEW MEXICO OIL CONSERVATION COMMISSION
WELL LOCATION AND ACREAGE DEDICATION PLAT

Form C-102
Supersedes C-128
Effective 1-1-65

All distances must be from the outer boundaries of the Section

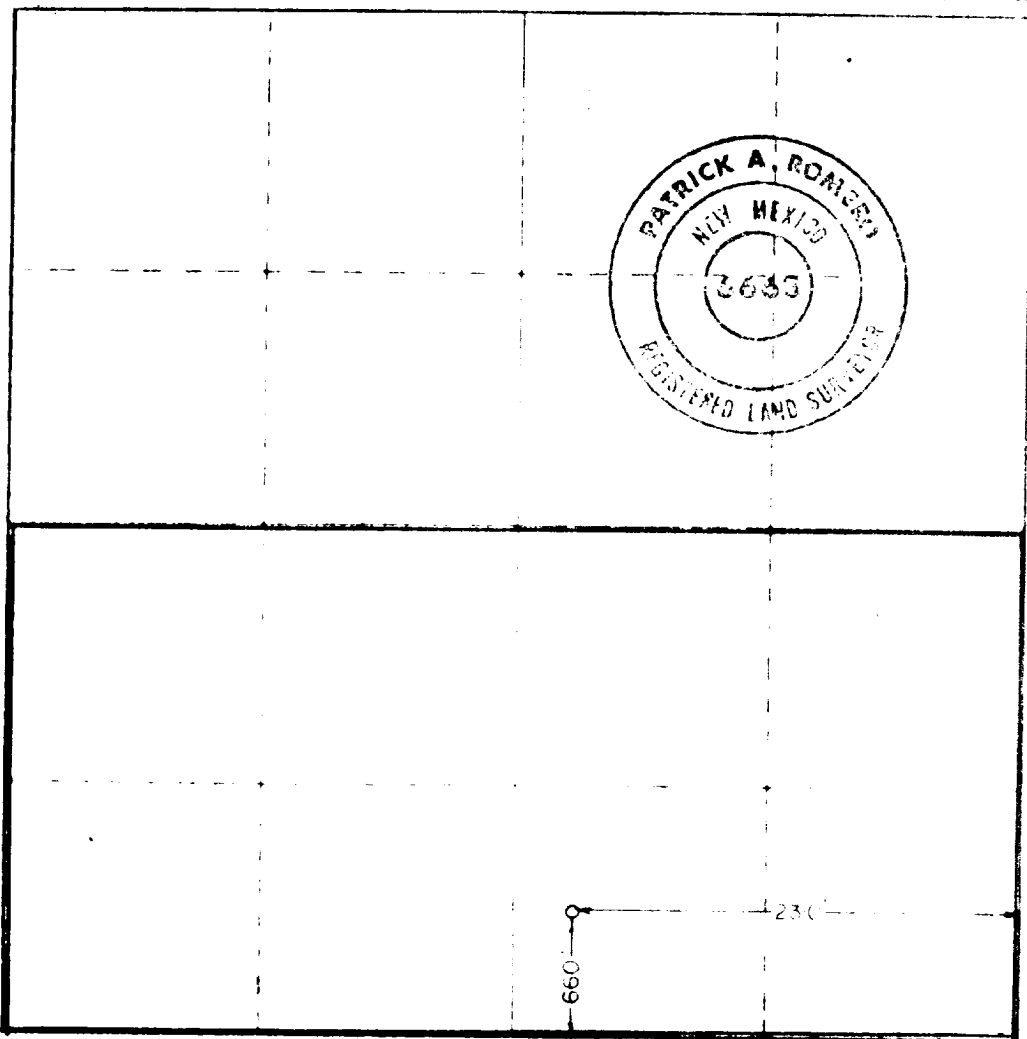
Operator Union Oil Co. of California		Lease West Lynch Deep Unit		Well No. 1
Well Letter Q	Section 28	Range 20 South	Range 34 East	Section Lea
Actual Footage Location of Well 660 feet from the South line and 2310 feet from the East line				
Ground Level Elev. 3725.5	Producing Formation SILURIAN		Pool WILDCAT	Production Acreage 320

- Outline the acreage dedicated to the subject well by colored pencil or hachure marks on the plat below.
- If more than one lease is dedicated to the well, outline each and identify the ownership thereof (both as to working interest and royalty)
- If more than one lease of different ownership is dedicated to the well, have the interests of all owners been consolidated by communitization, unitization, force-pooling, etc?

Yes No If answer is "yes," type of consolidation _____

If answer is "no," list the owners and tract descriptions which have actually been consolidated (Use reverse side of this form if necessary.) _____

No allowable will be assigned to the well until all interests have been consolidated (by communitization, unitization, forced-pooling, or otherwise) or until a non-standard unit, eliminating such interests, has been approved by the Commission.



CERTIFICATION

I hereby certify that the information contained herein is true and complete to the best of my knowledge and belief.

Arthur R. Brown
Arthur R. Brown

AGENT FOR

UNION OIL CO. OF CALIFORNIA

APRIL 21, 1980

I hereby certify that the well location shown on this plat was plotted from field notes of actual surveys made by me or under my supervision and that the same is true and correct to the best of my knowledge and belief.

April 15, 1980

Registered Surveyor's Engineer
No. 10131 Surveyor

Patrick A. Romero

Certificate No. JOHN W. WEST 676
PATRICK A. ROMERO 6665
Ronald J. Eidson 3239

