

**N MEXICO OIL CONSERVATION COMMISSION
WELL LOCATION AND ACREAGE DEDICATION PLAT**

Form C-102
Supersedes C-128
Effective 1-4-65

All distances must be from the outer boundaries of the Section.

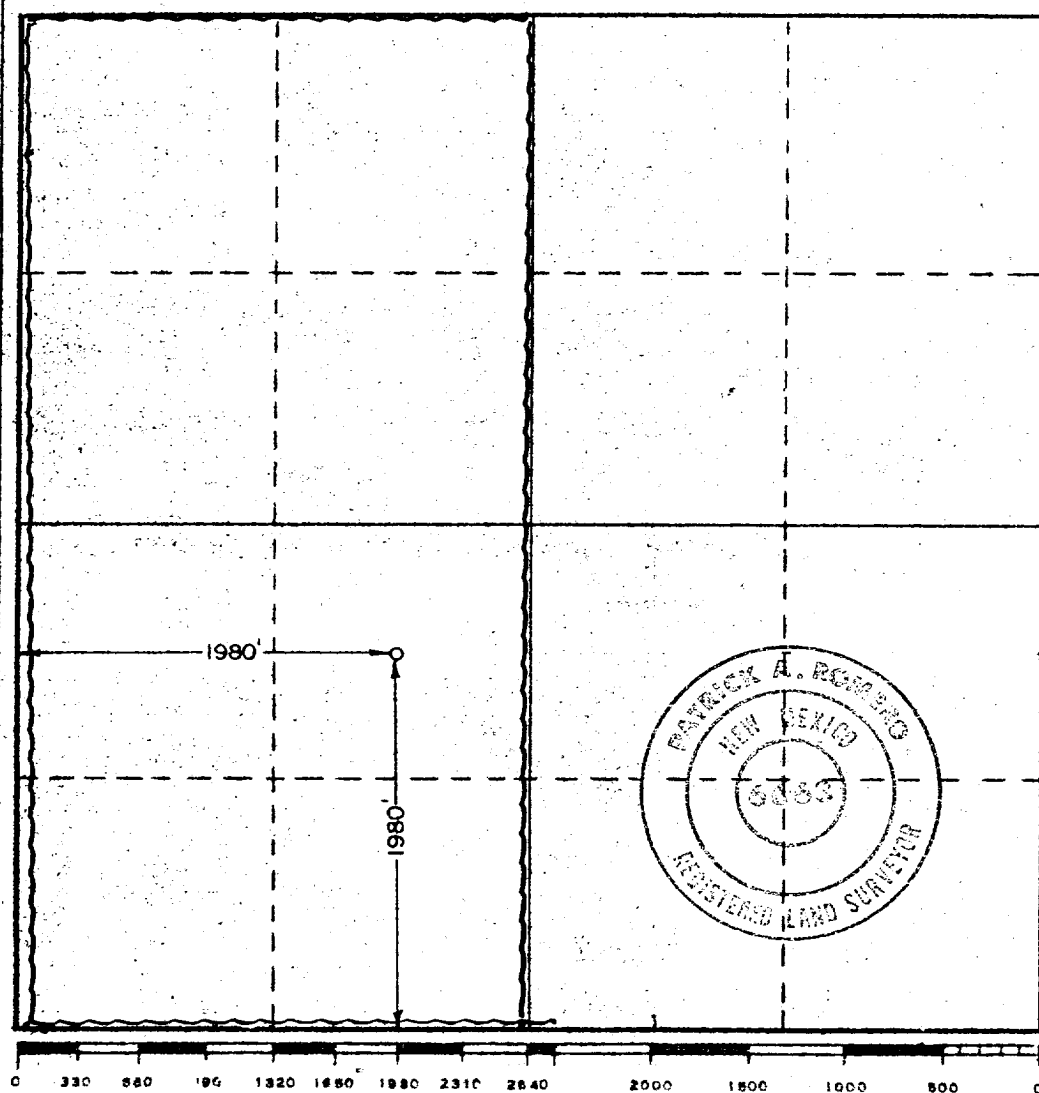
Operator AMOCO Production Co.		Lease Watkins "B" Gas Com.		Well No. 1
Unit Letter K	Section 23	Township 20 South	Range 35 East	County Lea
Actual Footage Location of Well:				
1980 feet from the South line and		1980 feet from the West line		
Ground Level Elev. 3673.8	Producing Formation Morrow	Pool <i>West Okmud</i> and: Morrow	Dedicated Acreage: 320 Acres	

1. Outline the acreage dedicated to the subject well by colored pencil or hachure marks on the plat below.
2. If more than one lease is dedicated to the well, outline each and identify the ownership thereof (both as to working interest and royalty).
3. If more than one lease of different ownership is dedicated to the well, have the interests of all owners been consolidated by communitization, unitization, force-pooling, etc?

Yes No If answer is "yes," type of consolidation _____

If answer is "no," list the owners and tract descriptions which have actually been consolidated. (Use reverse side of this form if necessary.) _____

No allowable will be assigned to the well until all interests have been consolidated (by communitization, unitization, forced-pooling, or otherwise) or until a non-standard unit, eliminating such interests, has been approved by the Commission.



CERTIFICATION	
I hereby certify that the information contained herein is true and complete to the best of my knowledge and belief.	
Name	<i>Benton Green</i>
Position	Assist. Admin. Analyst
Company	Amoco Production Company
Date	9-25-80
I hereby certify that the well location shown on this plat was plotted from field notes of actual surveys made by me or under my supervision, and that the same is true and correct to the best of my knowledge and belief.	
Date Surveyed	Sept. 11, 1980
Registered Professional Engineer and/or Land Surveyor	
<i>Patrick A. Romero</i>	
Certificate No.	JOHN W. WEST 876
	PATRICK A. ROMERO 6663
	Ronald J. Eidson 3239