

30-025-27628

NO. OF COPIES RECEIVED	
DISTRIBUTION	
SANTA FE	
FILE	
U.S.G.S.	
LAND OFFICE	
OPERATOR	

NEW MEXICO OIL CONSERVATION COMMISSION

Form C-101
Revised 1-4-85

5A. Indicate Type of Lease
STATE FEE

5. State Oil & Gas Lease No.

APPLICATION FOR PERMIT TO DRILL, DEEPEN, OR PLUG BACK

1a. Type of Work

b. Type of Well DRILL DEEPEN PLUG BACK
OIL WELL GAS WELL OTHER SINGLE ZONE MULTIPLE ZONE

2. Name of Operator
Amoco Production Company

3. Address of Operator
P. O. Box 68 Hobbs, NM 88240

4. Location of Well UNIT LETTER F LOCATED 1785 FEET FROM THE North LINE
AND 1810 FEET FROM THE West LINE OF SEC. 5 TWP. T-19-S RGE. R-38-E NMPM

7. Unit Agreement Name

8. Farm or Lease Name
McKinley

9. Well No.
20

10. Field and Pool, or Wildcat
Bowers Seven Rivers

12. County
Lea

19. Proposed Depth
3400

19A. Formation
Seven Rivers

20. Rotary or C.T.T.
Rotary

21. Elevations (Show whether D.R., R.I., etc.)
3621.1

21A. Kind & Status Plug. Bond

21B. Drilling Contractor

22. Approx. Date Work will start

PROPOSED CASING AND CEMENT PROGRAM

SIZE OF HOLE	SIZE OF CASING	WEIGHT PER FOOT	SETTING DEPTH	SACKS OF CEMENT	EST. TOP
12-1/4	8-5/8	24#	400	Circ.	Surf.
7-7/8	5-1/2	14#	3400	Circ.	Surf.

Propose to drill and equip well in the Bower Seven Rivers zone. After reaching TD, logs will be run and evaluated; perforate and or stimulate as necessary in attempting commercial production.

MUD PROGRAM: 0'- 400 Native mud & fresh water
400'-3400 Commercial mud and brine water with minimum properties for safe hole conditions.

BOP Program Attached.

APPROVAL VALID FOR 180 DAYS
PERMIT EXPIRES 5/9/82
UNLESS DRILLING UNDERWAY

0+6-NMOCD, H 1-Hou 1-Susp 1-W. Stafford, Hou 1-MDR

IN ABOVE SPACE DESCRIBE PROPOSED PROGRAM; IF PROPOSAL IS TO DEEPEN OR PLUG BACK, GIVE DATA ON PRESENT PRODUCTIVE ZONE AND PROPOSED NEW PRODUCTIVE ZONE; GIVE BLOWOUT PREVENTER PROGRAM, IF ANY.

I hereby certify that the information above is true and complete to the best of my knowledge and belief.

Signed Mark Randolph Title Assist. Admin. Analyst Date 11-5-81

(This space for State Use)

APPROVED BY [Signature] TITLE SUPERVISOR DISTRICT DATE _____

CONDITIONS OF APPROVAL, IF ANY:

NEW MEXICO OIL CONSERVATION COMMISSION
WELL LOCATION AND ACREAGE DEDICATION PLAT

Form 10-1
Supersedes Edition
Effective 1-1-81

All distances must be from the outer boundaries of the Section

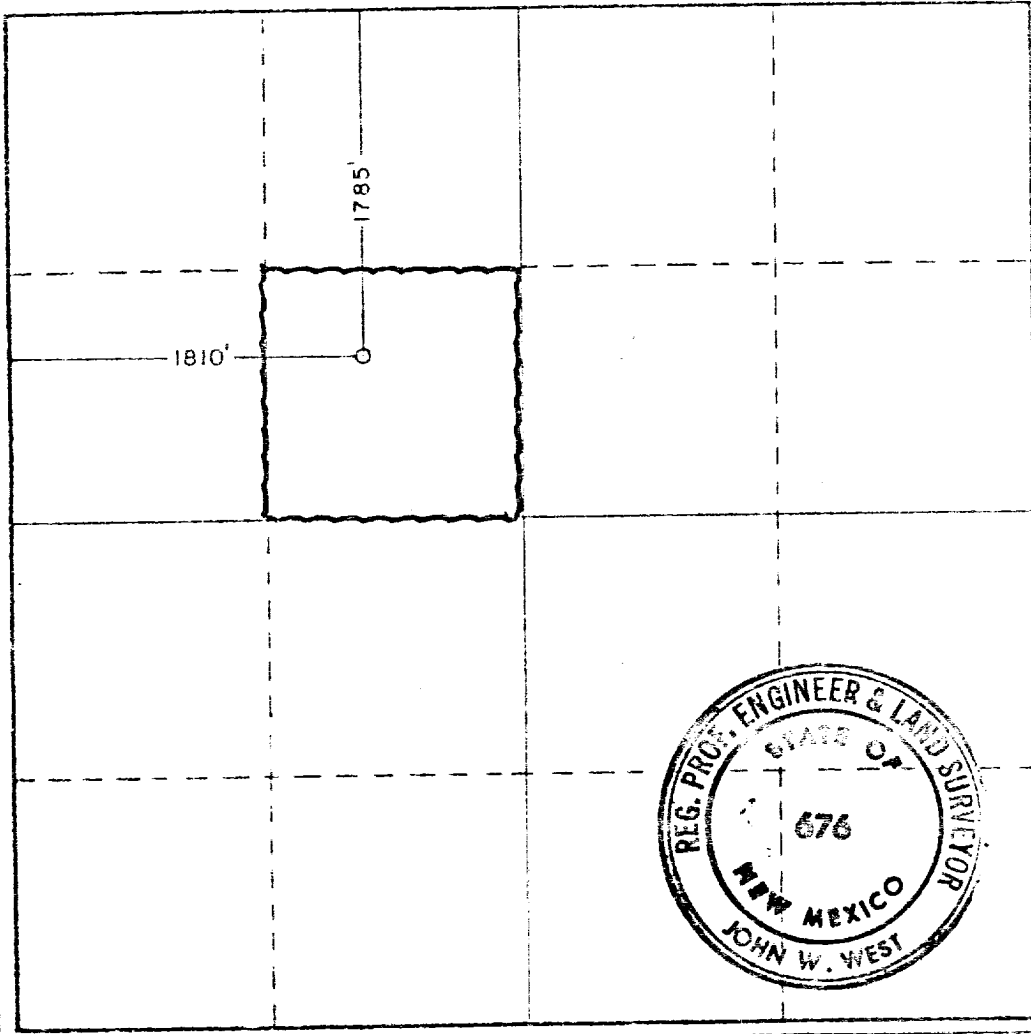
Operator Amoco Production Co.		Lease McKinley			Well No. 20
Tract Letter F	Section 5	Township 19 South	Range 38 East	County Lea	
Actual Footage Location of Well: 1785 feet from the North line and 1810 feet from the West line					
Ground Level Elev. 3621.1'	Producing Formation Seven Rivers		Pool Bowers Seven Rivers		Dedicated Acreage 40

1. Outline the acreage dedicated to the subject well by colored pencil or hachure marks on the plat below.
2. If more than one lease is dedicated to the well, outline each and identify the ownership thereof (both as to working interest and royalty).
3. If more than one lease of different ownership is dedicated to the well, have the interests of all owners been consolidated by communitization, unitization, force-pooling, etc?

Yes No If answer is "yes," type of consolidation _____

If answer is "no," list the owners and tract descriptions which have actually been consolidated. (Use reverse side of this form if necessary.) _____

No allowable will be assigned to the well until all interests have been consolidated (by communitization, unitization, forced-pooling, or otherwise) or until a non-standard unit, eliminating such interests, has been approved by the Commission.



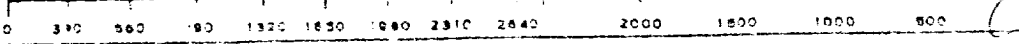
CERTIFICATION

I hereby certify that the information contained herein is true and complete to the best of my knowledge and belief.

Name: *Mark Randolph*
 Position: **Assist. Admin. Analyst**
 Company: **Amoco Production Company**
 Date: **11-5-81**

I hereby certify that the well location shown on this plat was plotted from field notes of actual surveys made by me or under my supervision, and that the same is true and correct to the best of my knowledge and belief.

Date Surveyed: **Oct. 13, 1981**
 Registered Professional Engineer and/or Land Surveyor:
John W. West
 Certificate No. **JOHN W. WEST 873**
PATRICK A. ROMERO 8468
Ronald J. Eidson 7239



3000# W.P. TWO-RAM BOP

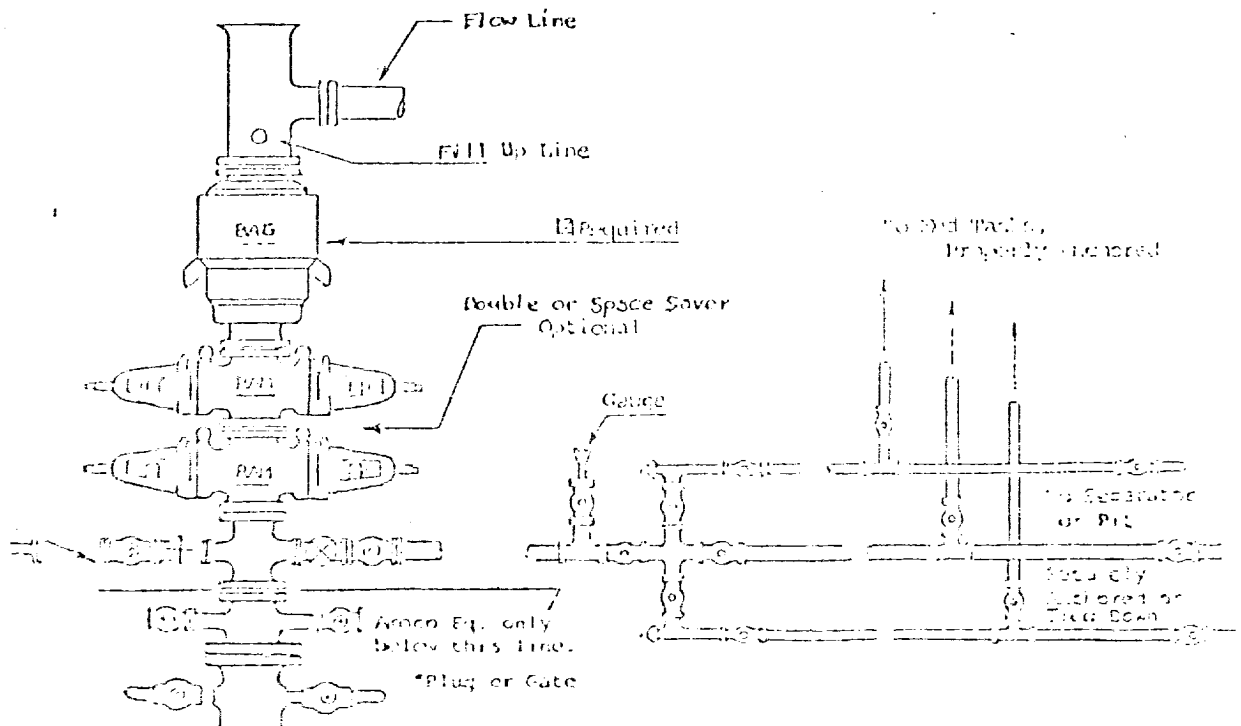
1. BOP'S TO BE FLUID OPERATED.
2. BOP'S AND ALL FITTINGS MUST BE IN GOOD CONDITION AND RATED AT 3000 PSI W.P. MINIMUM.
3. EQUIPMENT THROUGH WHICH BIT MUST PASS SHALL BE AT LEAST AS LARGE AS CASING SIZE BEING DRILLED THROUGH.
4. NIPPLE ABOVE BOP'S SHALL BE SAME SIZE AS LAST CASING SET.
5. UPPER KELLY COCK IS REQUIRED AND SHALL BE 3000# W.P. MINIMUM.
6. T. I. W. OR COMPARABLE SAFETY VALVE SHALL BE AVAILABLE ON RIG FLOOR WITH CONNECTION OR SUBS TO FIT ANY TOOL JOINT IN THE STRING. VALVE TO BE FULL BORE 5000# MIN.
7. VALVE NEXT TO SPOOL SHALL BE 4". OTHER EQUIPMENT MAY BE 3" OR 4". ALL CHOKE MANIFOLD EQUIPMENT SHALL BE FLANGED. FLOW LINE FROM MANIFOLD TO BE MINIMUM OF 3" AND STRAIGHT AS POSSIBLE WITH MINIMUM BENDS.
8. FLUID LINES FROM ACCUMULATOR TO BOP'S AND ALL REMOTE CONTROL FLUID LINES SHALL BE STEEL, AND RATED AT OR ABOVE MAXIMUM ACCUMULATOR PRESSURE. LINES SHALL BE ROUTED IN BUNDLES AND ADEQUATELY PROTECTED FROM DAMAGE.
9. USE RAMS IN FOLLOWING POSITIONS:*

	<u>DRILLING</u>	<u>RUNNING CASING</u>
UPPER RAM	DRILL PIPE	CASING
LOWER RAM	BLIND	BLIND

*AMOCO AREA SUPT. MAY REVERSE LOCATION OF RAMS.

10. CHOKE MANIFOLD, BEYOND SECOND VALVE FROM CROSS MAY BE OPTIONALLY POSITIONED OUTSIDE OF SUBSTRUCTURE.
11. EXTENSIONS AND HAND WHEELS TO BE INSTALLED AND BRACED AT ALL TIMES.
12. TWO INCH (2") LINES AND VALVES ARE PERMITTED ON THE KILL LINE.

NOTE: ALL UNMARKED VALVES MAY BE PLUG OR GATE VALVE, METAL TO METAL SEAL.



18/11/14 Log prog 2000000000
477