

30-025-29019

Form 3160-3
(November 1983)
(formerly 9-331C)

SUBMIT IN TRIPLICATE*
(Other instructions on
reverse side)

Form approved.
Budget Bureau No. 1004-0136
Expires August 31, 1985

UNITED STATES
DEPARTMENT OF THE INTERIOR
BUREAU OF LAND MANAGEMENT

APPLICATION FOR PERMIT TO DRILL, DEEPEN, OR PLUG BACK

1a. TYPE OF WORK
DRILL DEEPEN PLUG BACK

b. TYPE OF WELL
OIL WELL GAS WELL OTHER
SINGLE ZONE MULTIPLE ZONE

2. NAME OF OPERATOR
BTA OIL PRODUCERS

3. ADDRESS OF OPERATOR
104 South Pecos, Midland, Texas 79701

4. LOCATION OF WELL (Report location clearly and in accordance with any State requirements.*)
At surface 1980' FSL & 1980' FWL
At proposed prod. zone

14. DISTANCE IN MILES AND DIRECTION FROM NEAREST TOWN OR POST OFFICE*
25 Miles West from Eunice

15. DISTANCE FROM PROPOSED* LOCATION TO NEAREST PROPERTY OR LEASE LINE, FT. (Also to nearest drlg. unit line, if any)
1980' Sec. line
660' DrlgUnit

16. NO. OF ACRES IN LEASE
320

17. NO. OF ACRES ASSIGNED TO THIS WELL
40

18. DISTANCE FROM PROPOSED LOCATION* TO NEAREST WELL, DRILLING, COMPLETED, OR APPLIED FOR, ON THIS LEASE, FT.
Well No. 1
1320'

19. PROPOSED DEPTH
13,522' TD
12,790' PB

20. ROTARY OR CABLE TOOLS
Workover

21. ELEVATIONS (Show whether DF, RT, GR, etc.)
3,673' GR 3,693' RKB

22. APPROX. DATE WORK WILL START*
3/21/90

23. Existing ~~PROPOSED~~ CASING AND CEMENTING PROGRAM

SIZE OF HOLE	SIZE OF CASING	WEIGHT PER FOOT	SETTING DEPTH	QUANTITY OF CEMENT
26"	20"	94	700'	1250
17 1/2"	13 3/8"	61 & 68	3600'	2600
12 1/4"	9 5/8"	36 & 40	5500'	1800
8 3/4"	5 1/2"	20#	13522'	2600

Proposed

- MIRU Pulling Unit - Fill tbg & csg w/ 2% KCL wtr. POH w/ tbg & pkr.
- RU wireline truck. Set CIBP @ 12,825' - Cap w/ 35' cmt.
- Spot 200 gals. 10% acetic acid.
- Set packer @ 12,050' - pr. test to 2000 psi. ND BOP - Swab well down
- Perf. from 12,289' - 12,308' w/ 4 JSPF (76 holes)
- Swab & flow test well.
- Additional program to follow.

IN ABOVE SPACE DESCRIBE PROPOSED PROGRAM: If proposal is to deepen or plug back, give data on present productive zone and proposed new productive zone. If proposal is to drill or deepen directionally, give pertinent data on subsurface locations and measured and true vertical depths. Give blowout preventer program, if any.

24. SIGNED Dorothy Houghton TITLE Regulatory Administrator DATE 3/16/90
DOROTHY HOUGHTON
(This space for Federal or State office use)

PERMIT NO. _____ APPROVAL DATE _____
APPROVED BY _____ TITLE PETROLEUM ENGINEER DATE 3-27-90
CONDITIONS OF APPROVAL, IF ANY:

*See Instructions On Reverse Side

OIL CONSERVATION DIV. N

STATE OF NEW MEXICO
ENERGY AND MINERALS DEPARTMENT

P. O. BOX 2088
SANTA FE, NEW MEXICO 87501

Form C-102
Revised 10-1-78

All distances must be from the outer boundaries of the Section.

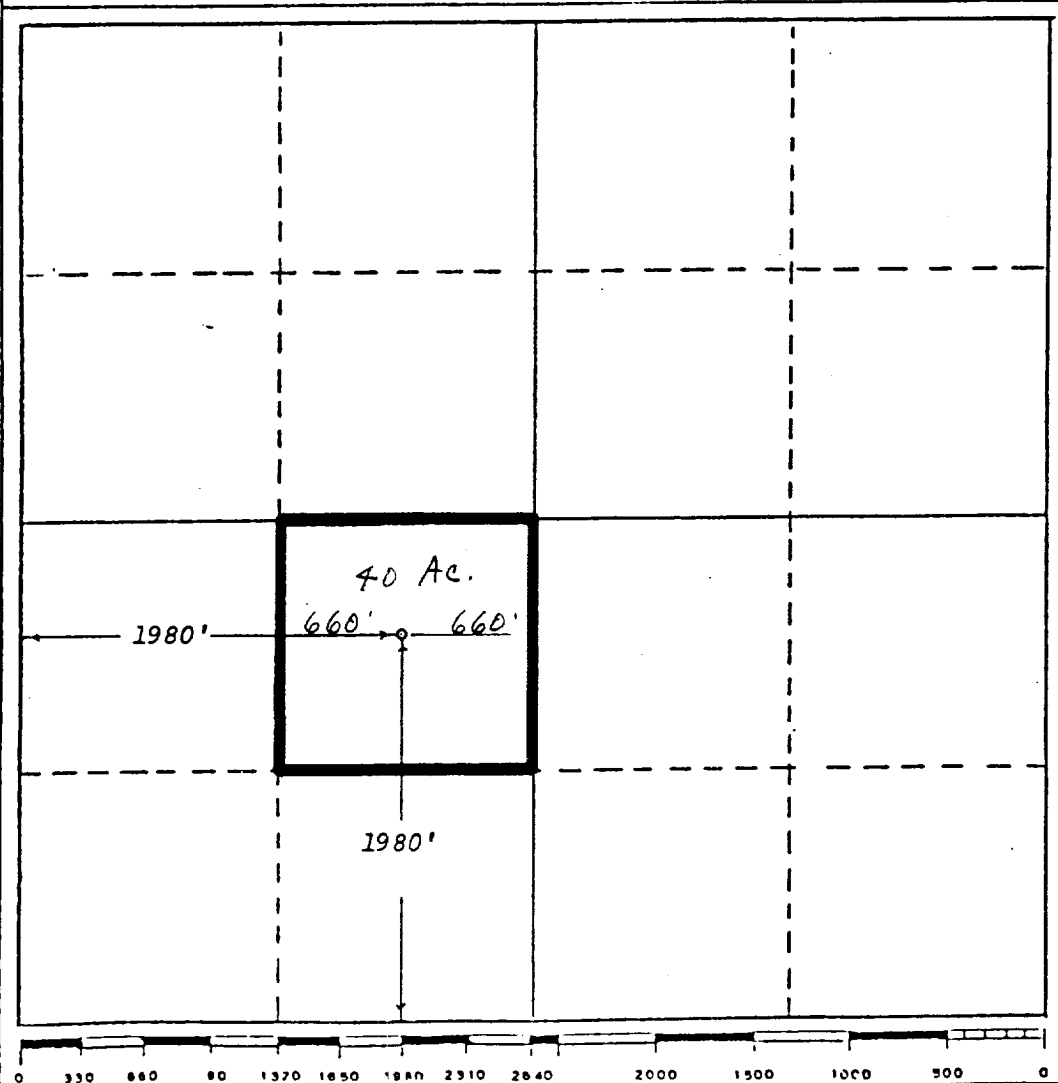
Operator BTA OIL PRODUCERS		Lease 8612 JV-P LYNCH		Well No. 2
Unit Letter	Section 24	Township T-20-S	Range R-34-E	County LEA COUNTY
Actual Footage Location of Well:				
1980 feet from the SOUTH line and		1980 feet from the WEST line		
Ground Level Elev. 3673'	Producing Formation Strawn	Pool Wildcat	Dedicated Acreage: 40 Acres	

1. Outline the acreage dedicated to the subject well by colored pencil or hachure marks on the plat below.
2. If more than one lease is dedicated to the well, outline each and identify the ownership thereof (both as to working interest and royalty).
3. If more than one lease of different ownership is dedicated to the well, have the interests of all owners been consolidated by communitization, unitization, force-pooling, etc?

Yes No If answer is "yes," type of consolidation _____

If answer is "no," list the owners and tract descriptions which have actually been consolidated. (Use reverse side of this form if necessary.) _____

No allowable will be assigned to the well until all interests have been consolidated (by communitization, unitization, forced-pooling, or otherwise) or until a non-standard unit, eliminating such interests, has been approved by the Division



CERTIFICATION

I hereby certify that the information contained herein is true and complete to the best of my knowledge and belief.

Dorothy Houghton
Name

DOROTHY HOUGHTON
Position

Regulatory Administrator
Company

BTA OIL PRODUCERS
Date

3/16/90

I hereby certify that the well location shown on this plat was plotted from field notes of actual surveys made by me or under my supervision, and that the same is true and correct to the best of my knowledge and belief.

Date Surveyed

Sept. 24, 1988

Registered Professional
and/or Land Surveyor

NC. 6689

Certificate

STATE OF NEW MEXICO
REGISTERED LAND SURVEYOR
6689