

STATE OF NEW MEXICO
ENERGY AND MINERALS DEPARTMENT

OIL CONSERVATION DIVISION

P. O. BOX 2088
SANTA FE, NEW MEXICO 87501

Form C-101
Revised 10-1-78

NO. OF COPIES RECEIVED	
DISTRIBUTION	
SANTA FE	
FILE	
U.S.G.S.	
LAND OFFICE	
OPERATOR	

5A. Indicate Type of Lease
STATE ☐ FEDERAL ☒

5. State Oil & Gas Lease No.

APPLICATION FOR PERMIT TO DRILL, DEEPEN, OR PLUG BACK

1a. Type of Work

DRILL ☒

DEEPEN ☐

PLUG BACK ☐

b. Type of Well

OIL WELL ☒

GAS WELL ☐

OTHER

SINGLE ZONE ☒

MULTIPLE ZONE ☐

3. Name of Operator

AMOCO PRODUCTION COMPANY

3. Address of Operator

P. O. Box 68, Hobbs, New Mexico 88240

4. Location of Well

UNIT LETTER I LOCATED 1568 FEET FROM THE South LINE

AND 1105 FEET FROM THE East LINE OF SEC. 5 TWP. 19-S RCG. 38-E NEELPM

7. Unit Agreement Name

8. Farm or Lease Name

South Hobbs (GSA) Unit

9. Well No.

190

10. Field and Pool, or Wildcat
Hobbs GSA

12. County

Lea

1. Elevations (Show whether DT, HL, etc.)

3610.7

21A. Kind & Status Plug. Bond

blanket-on-file

19. Proposed Depth

4500'

19A. Formation

Grayburg-San Andres

20. Rotary or C.T.

Rotary

22. Approx. Date Work will start

23.

PROPOSED CASING AND CEMENT PROGRAM

SIZE OF HOLE	SIZE OF CASING	WEIGHT PER FOOT	SETTING DEPTH	SACKS OF CEMENT	EST. TOP
11" or 12-1/4"	8-5/8"	24#	1600'	circulate	surface
7-7/8"	5-1/2"	15.5#	4500'	circulate	surface

Propose to drill and equip well in the Grayburg-San Andres formation. After reaching TD, logs will be run and evaluated. Perforate and/or stimulate as necessary in attempting commercial production.

Mud Program: 0' - 1600' Native
1600' - 3800' Brine-Min properties for safe hole condition
3800' - TD Salt gel/starch

BOP Diagram attached

Permit Expires 6 Months From Approval
Date Unless Drilling Underway.

NSL-1956

0+6-NMOCD, Hobbs 1-J. R. Barnett, HOU Rm. 21.156 1-F. J. Nash, HOU Rm. 4.206 1-GCC
1-Petro Lewis 1-Sun 1-Shell 1-Texaco

1. ABOVE SPACE DESCRIBE PROPOSED PROGRAM; IF PROPOSAL IS TO DEEPEN OR PLUG BACK, GIVE DATA ON PRESENT PRODUCTIVE ZONE AND PROPOSED NEW PRODUCTION ZONE. GIVE BLOWOUT PREVENTER PROGRAM, IF ANY.

I hereby certify that the information above is true and complete to the best of my knowledge and belief.

Signed Harry C. Clark Title Assist Admin. Analyst Date 12-20-84

(This space for State Use)
ORIGINAL SIGNED BY JERRY SEXTON
DISTRICT I SUPERVISOR

APPROVED BY _____ TITLE _____ DATE _____

CONDITIONS OF APPROVAL, IF ANY:

JAN - 3 1985

**NL MEXICO OIL CONSERVATION COMMISSION
WELL LOCATION AND ACREAGE DEDICATION PLAT**

Form C-102
Supersedes C-128
Effective 1-1-65

All distances must be from the outer boundaries of the Section.

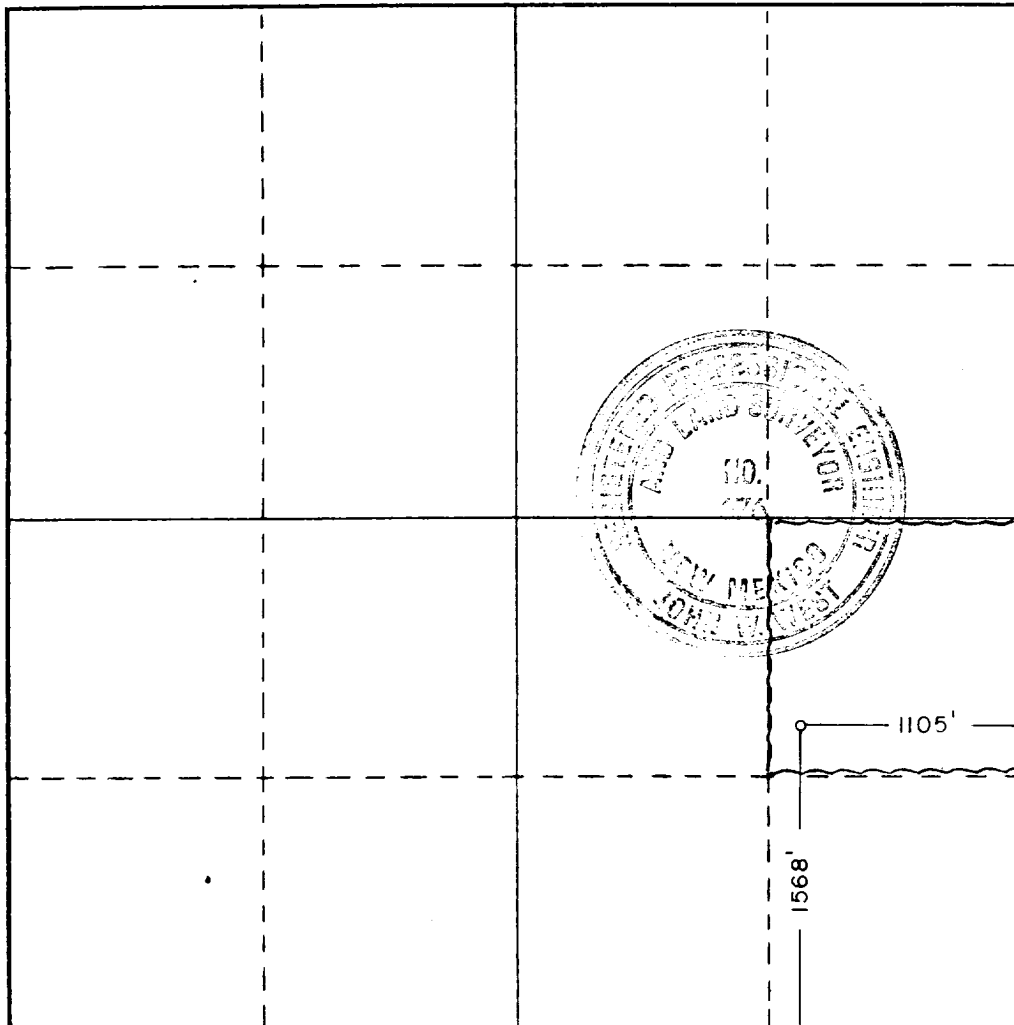
Operator AMOCO PRODUCTION COMPANY			Lease SHGSAU		Well No. 190
Unit Letter I	Section 5	Township 19S	Range 38E	County LEA	
Actual Footage Location of Well: 1568 feet from the SOUTH line and 1105 feet from the EAST line					
Ground Level Elev. 3610.7	Producing Formation Grayburg San Andres		Pool Hobbs GSA		Dedicated Acreage: 40 Acres

1. Outline the acreage dedicated to the subject well by colored pencil or hachure marks on the plat below.
2. If more than one lease is dedicated to the well, outline each and identify the ownership thereof (both as to working interest and royalty).
3. If more than one lease of different ownership is dedicated to the well, have the interests of all owners been consolidated by communitization, unitization, force-pooling, etc?

☒ Yes ☐ No If answer is "yes," type of consolidation Unitization

If answer is "no," list the owners and tract descriptions which have actually been consolidated. (Use reverse side of this form if necessary.) _____

No allowable will be assigned to the well until all interests have been consolidated (by communitization, unitization, forced-pooling, or otherwise) or until a non-standard unit, eliminating such interests, has been approved by the Commission.



CERTIFICATION

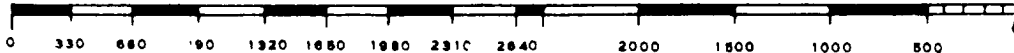
I hereby certify that the information contained herein is true and complete to the best of my knowledge and belief.

Name *Mary C. Clark*
 Position Assist. Admin. Analyst
 Company AMOCO PRODUCTION COMPANY
 Date 12-6-84

I hereby certify that the well location shown on this plat was plotted from field notes of actual surveys made by me or under my supervision, and that the same is true and correct to the best of my knowledge and belief.

Date Surveyed 11/16/84
 Registered Professional Engineer and/or Land Surveyor

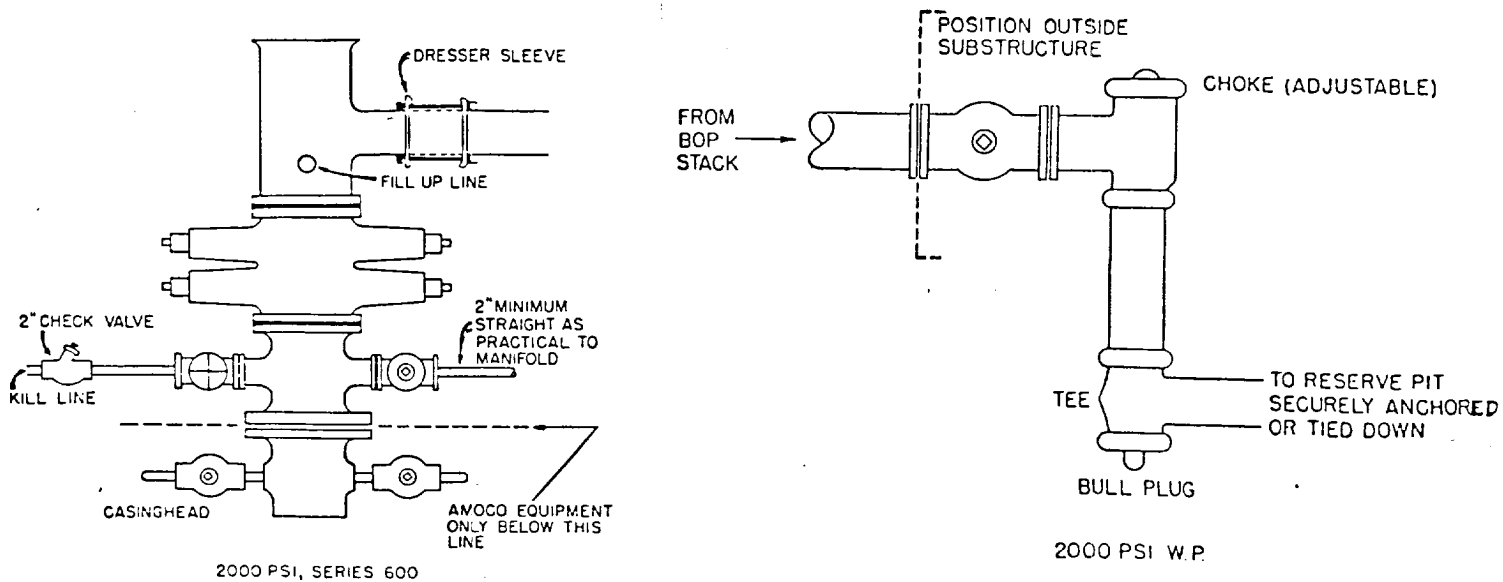
[Signature]
 Certificate No. JOHN W. WEST, 676
RONALD J. EIDSON, 3239



STANDARD 2000 PSI W.P. BOP STACK

1. Blow-out preventers may be manually operated.
2. All equipment must be in good condition, 2,000 psi W.P. (4,000 psi test) minimum.
3. Bell nipple above blow-out preventer shall be same size as casing being drilled through.
4. Kelly cock to be installed on kelly.
5. Full opening safety valve 2,000 psi w.p. (4,000 psi test) minimum must be available on rig floor at all times with proper connection or subs to fit any tool joint in string.
6. Spool or cross may be eliminated if connections are available in the lower part of the blow-out preventer body.
7. Double or space saver type preventers may be used in lieu of two single preventers.
8. BOP rams to be installed as follows:
 - Top preventer - Drill pipe or casing rams
 - Bottom preventer - Blind rams

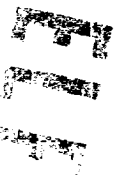
*Amoco District Superintendent may reverse location of rams.
9. Extensions and hand wheels to be installed and braced at all times.
10. Manifold valves may be gate or plug metal to metal seal 2" minimum.



RECEIVED

DEC 20 1984

U.S. DEPT. OF JUSTICE
FEDERAL BUREAU OF INVESTIGATION



Cement Band
Log
2-4-85