

30-02-24459

NO. OF COPIES RECEIVED	
DISTRIBUTION	
SANTA FE	
FILE	
U.S.G.S.	
LAND OFFICE	
OPERATOR	

5A. Indicate Type of Lease
STATE FEE

5. State Oil & Gas Lease No.
A-1646-5

APPLICATION FOR PERMIT TO DRILL, DEEPEN, OR PLUG BACK

1a. Type of Work
b. Type of Well DRILL DEEPEN PLUG BACK
OIL WELL GAS WELL OTHER SINGLE ZONE MULTIPLE ZONE

2. Name of Operator
AMOCO PRODUCTION COMPANY

3. Address of Operator
P.O. BOX 68 HOBBS, NEW MEXICO 88240

4. Location of Well
UNIT LETTER H LOCATED 2310 FEET FROM THE North LINE
AND 1028 FEET FROM THE East LINE OF SEC. 6 TWP. 19-S RCG. 38-E NMPM

7. Unit Agreement Name

8. Farm or Lease Name
South Hobbs (GSA) Unit

9. Well No.
201

10. Field and Pool, or Wildcat
HOBBS GSA

12. County
LEA

19. Proposed Depth
4300'

19A. Formation
GRAYBURG-SAN ANDRES

20. Rotary or C.T.
ROTARY

21. Elevations (show whether Df, KI, etc.)
36 28.5' GL

21A. Kind & Status Plug. Bond
BLANKET-ON-FILE

21B. Drilling Contractor
N/A

22. Approx. Date Work will start
4th QUARTER 1985

23. PROPOSED CASING AND CEMENT PROGRAM

SIZE OF HOLE	SIZE OF CASING	WEIGHT PER FOOT	SETTING DEPTH	SACKS OF CEMENT	EST. TOP
12-1/4"	8-5/8"	24#	1600'	Circulate to surface	
7-7/8"	5-1/2"	15.5#	4300'	Circulate to surface	

Propose to drill and equip well in the Grayburg-San Andres Formation. After reaching TD, logs will be run and evaluated. Perforate and stimulate as necessary in attempting commercial production. Reference Administrative Order No. NSL-2167.

Mud Program: 0 - 1600' Native Spud Mud
1600 - 3800' Brine Water
3800 - 4200' Salt Gel/Starch

Permit Expires 6 Months From Approval Date Unless Drilling Underway.

BOP Diagram Attached

O+5 NMOCD, H 1-JRB 1-FJN 1-CMH 1-Shell 1-Arco 1-San

IN ABOVE SPACE DESCRIBE PROPOSED PROGRAM; IF PROPOSAL IS TO DEEPEN OR PLUG BACK, GIVE DATA ON PRESENT PRODUCTIVE ZONE AND PROPOSED NEW PRODUCTIVE ZONE. GIVE BLOWOUT PREVENTER PROGRAM, IF ANY.

I hereby certify that the information above is true and complete to the best of my knowledge and belief.

Signed Charles M. Loring Title Administrative Analyst (SG) Date 10-14-85

(TAKE ORIGINAL SIGNATURE TO STATE)

APPROVED BY Oil & Gas Inspector TITLE _____ DATE OCT 16 1985

CONDITIONS OF APPROVAL, IF ANY:

NEW MEXICO OIL CONSERVATION COMMISSION
WELL LOCATION AND ACREAGE DEDICATION PLAT

Form C-102
Supersedes C-128
Effective 1-1-65

All distances must be from the outer boundaries of the Section

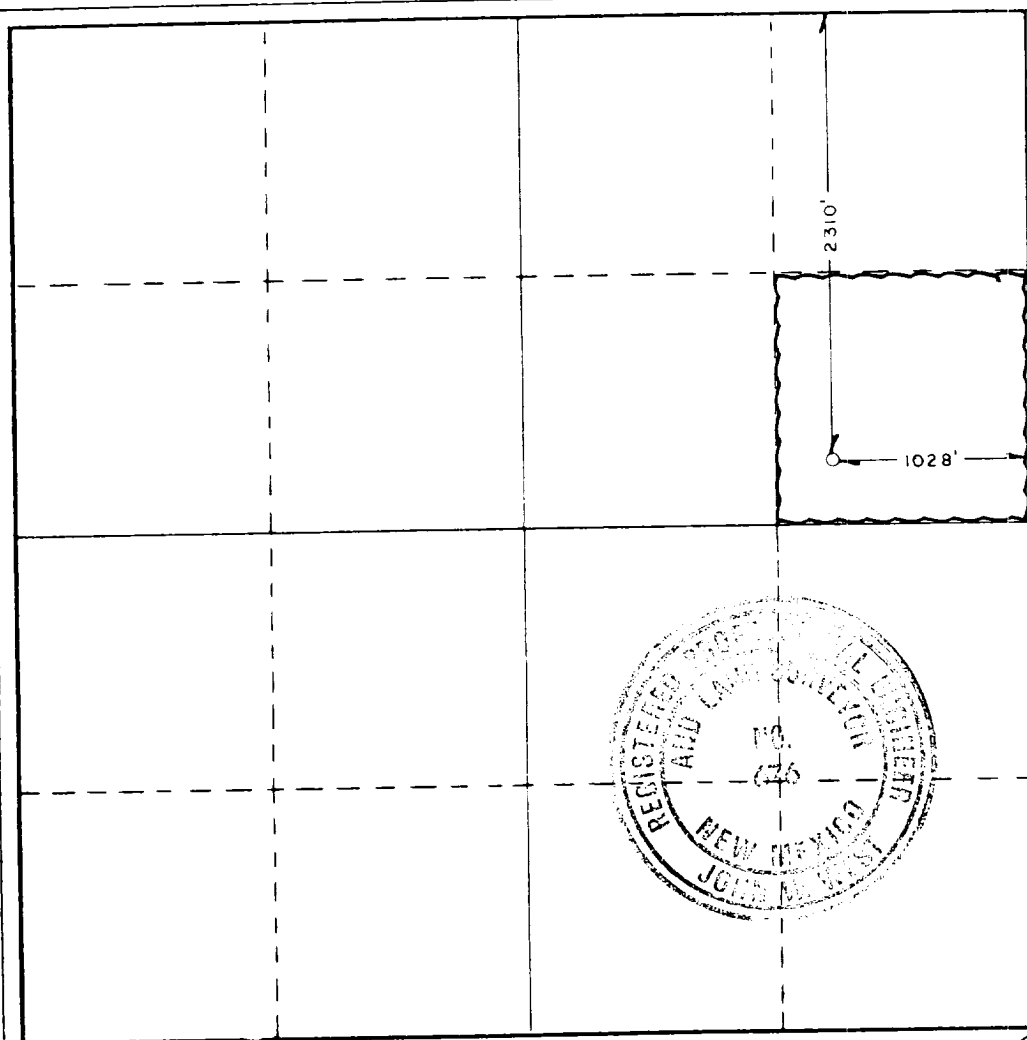
Operator AMOCO PRODUCTION COMPANY		Lease SOUTH HOBBS GRAYBURG SAN ANDRES UNIT		Well No. 201
Unit Letter H	Section 6	Township 19 SOUTH	Range 38 EAST	County LEA
Actual Footage Location of Well: 2310 feet from the NORTH line and 1028 feet from the EAST line				
Ground Level Elev. 3628.5'	Producing Formation Grayburg San Andres	Pool Hobbs GSA	Dedicated Acreage: 40 Acres	

1. Outline the acreage dedicated to the subject well by colored pencil or hachure marks on the plat below.
2. If more than one lease is dedicated to the well, outline each and identify the ownership thereof (both as to working interest and royalty).
3. If more than one lease of different ownership is dedicated to the well, have the interests of all owners been consolidated by communitization, unitization, force-pooling, etc?

Yes No If answer is "yes," type of consolidation unitization

If answer is "no," list the owners and tract descriptions which have actually been consolidated. (Use reverse side of this form if necessary.) _____

No allowable will be assigned to the well until all interests have been consolidated (by communitization, unitization, forced-pooling, or otherwise) or until a non-standard unit, eliminating such interests, has been approved by the Commission.



CERTIFICATION

I hereby certify that the information contained herein is true and complete to the best of my knowledge and belief.

Signature: Charles M. Leary
 Position: Admin. Analyst (SG)
 Company: Amoco Production Company
 Date: 10-14-85

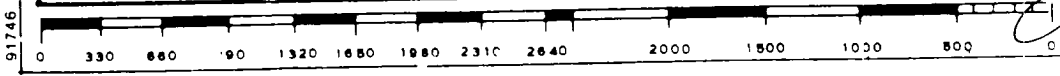
I hereby certify that the well location shown on this plat was plotted from field notes of actual surveys made by me or under my supervision, and that the same is true and correct to the best of my knowledge and belief.

Date Surveyed
AUGUST 16, 1985

Registered Professional Engineer
and/or Land Surveyor

Signature: John W. West

Certificate No. JOHN W. WEST, 676
RONALD J. EIDSON, 3239

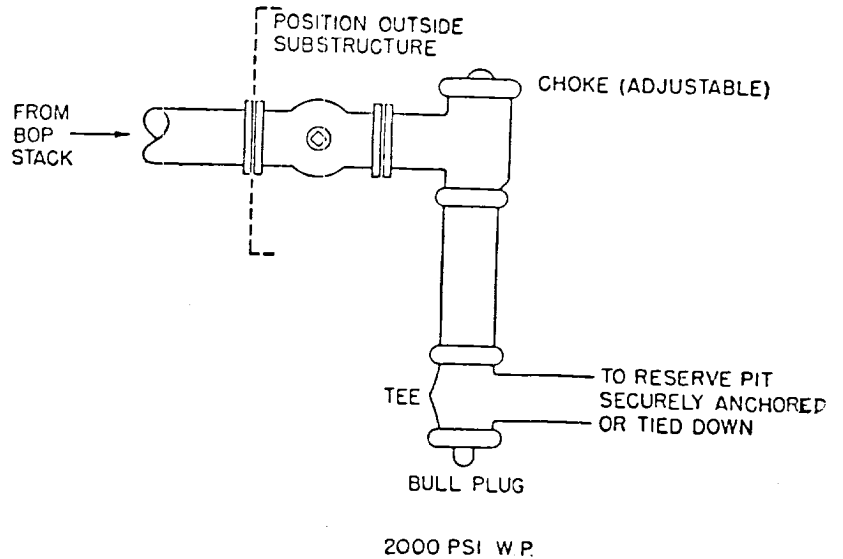
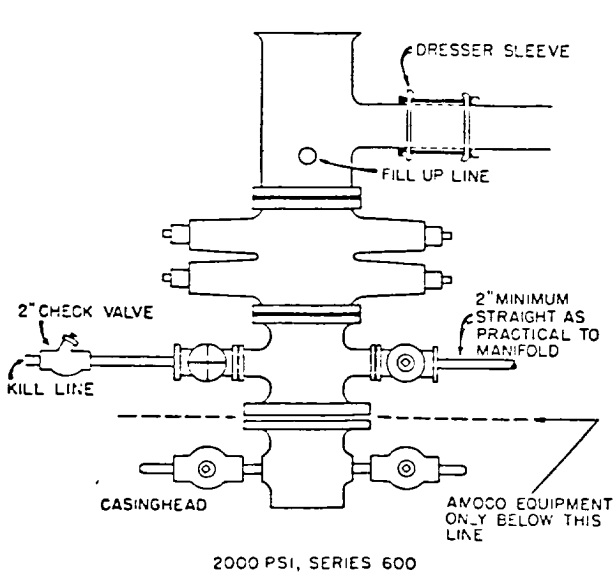


91746

STANDARD 2000 PSI W.P. BOP STACK

1. Blow-out preventers may be manually operated.
2. All equipment must be in good condition, 2,000 psi W.P. (4,000 psi test) minimum.
3. Bell nipple above blow-out preventer shall be same size as casing being drilled through.
4. Kelly cock to be installed on kelly.
5. Full opening safety valve 2,000 psi w.p. (4,000 psi test) minimum must be available on rig floor at all times with proper connection or subs to fit any tool joint in string.
6. Spool or cross may be eliminated if connections are available in the lower part of the blow-out preventer body.
7. Double or space saver type preventers may be used in lieu of two single preventers.
8. BOP rams to be installed as follows:
 - Top preventer - Drill pipe or casing rams
 - Bottom preventer - Blind rams

*Amoco District Superintendent may reverse location of rams.
9. Extensions and hand wheels to be installed and braced at all times.
10. Manifold valves may be gate or plug metal to metal seal 2" minimum.



RECEIVED
173

OCT 15 1985

RECEIVED