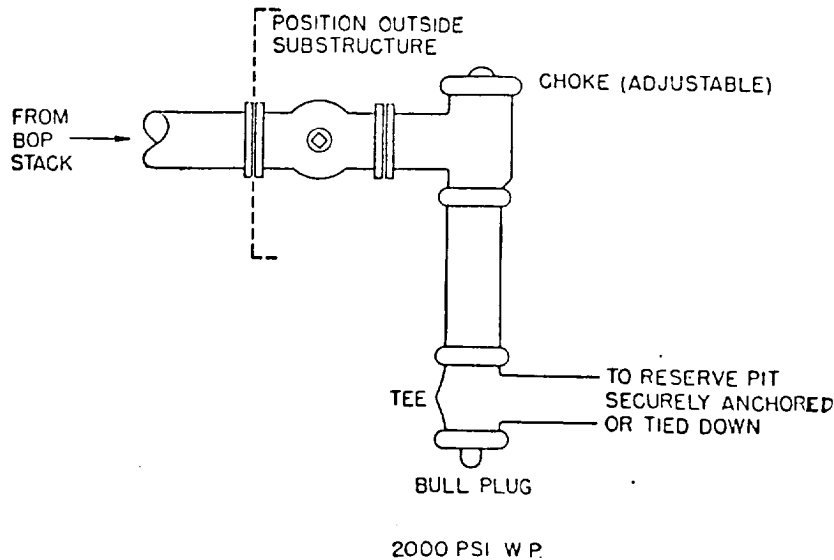
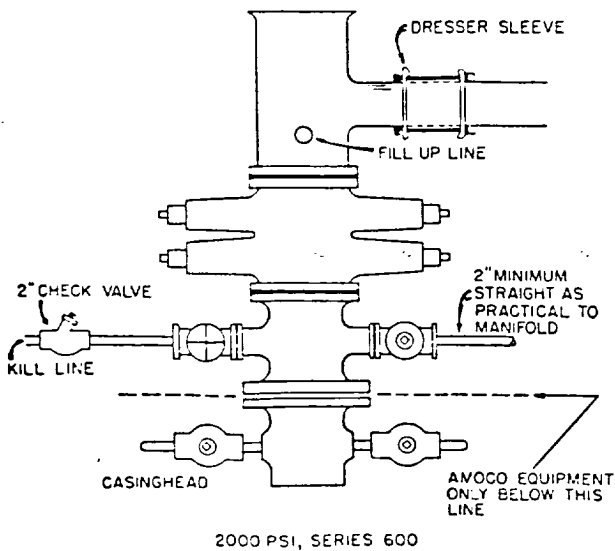


STANDARD 2000 PSI W.P. BOP STACK

1. Blow-out preventers may be manually operated.
2. All equipment must be in good condition, 2,000 psi W.P. (4,000 psi test) minimum.
3. Bell nipple above blow-out preventer shall be same size as casing being drilled through.
4. Kelly cock to be installed on kelly.
5. Full opening safety valve 2,000 psi w.p. (4,000 psi test) minimum must be available on rig floor at all times with proper connection or subs to fit any tool joint in string.
6. Spool or cross may be eliminated if connections are available in the lower part of the blow-out preventer body.
7. Double or space saver type preventers may be used in lieu of two single preventers.
8. BOP rams to be installed as follows:\*
 

Top preventer	-	Drill pipe or casing rams
Bottom preventer	-	Blind rams

\*Amoco District Superintendent may reverse location of rams.
9. Extensions and hand wheels to be installed and braced at all times.
10. Manifold valves may be gate or plug metal to metal seal 2" minimum.



RECEIVED  
NOV 23 1985  
ADDRESS SERVICE

111

General Fund  
11/21/85  
111